

## Commercial Grade BNC Male to SMA Male Adapter



### PE910082

#### Configuration

- BNC Male Connector 1
- SMA Male Connector 2
- 50 Ohms Impedance
- Commercial Grade Design
- Straight Body Geometry

#### Features

- Gold Plated Brass Contact

#### Applications

- Allows Connection Between Series
- General Purpose Test

#### Description

Pasternack's PE910082 BNC male to SMA male adapter is part of our full line of RF components available for same-day shipping. Our BNC to SMA adapter has a male to male gender configuration in a commercial grade design.

RF adapters are often used to enable connections between two connector types that would otherwise not mate. Certain adapter configurations can also be used to protect connectors on expensive equipment where the number of connect/disconnect cycles is high. An RF, microwave or millimeter wave adapter is connected to the equipment, and the commonly changed connection is made with the adapter which can be easily replaced when it wears out after high usage; such adapters are referred to as connector savers. Pasternack also offers bulkhead, panel mount, hermetically sealed, reverse polarity, and isolated ground adapter varieties to serve all of your RF, microwave and millimeter wave needs.

#### Electrical Specifications

Description	Minimum	Typical	Maximum	Units
Impedance		50		Ohms

#### Mechanical Specifications

##### Size

Length	1.21 in [30.73 mm]
Width	0.62 in [15.75 mm]
Height	0.62 in [15.75 mm]
Weight	0.03 lbs [13.61 g]

Description	Connector 1	Connector 2
Polarity	Standard	Standard

#### Material Specifications

Description	Connector 1		Connector 2	
	Material	Plating	Material	Plating
Type	BNC Male		SMA Male	
Contact	Brass	Gold	Brass	Gold
Insulation	POM		POM	

## Commercial Grade BNC Male to SMA Male Adapter

**PE910082**



### Material Specifications

Description	Connector 1		Connector 2	
	Material	Plating	Material	Plating
Outer Conductor	Brass	Nickel	Brass	Nickel
Body	Brass	Nickel	Brass	Nickel

### Compliance Certifications (see [product page](#) for current document)

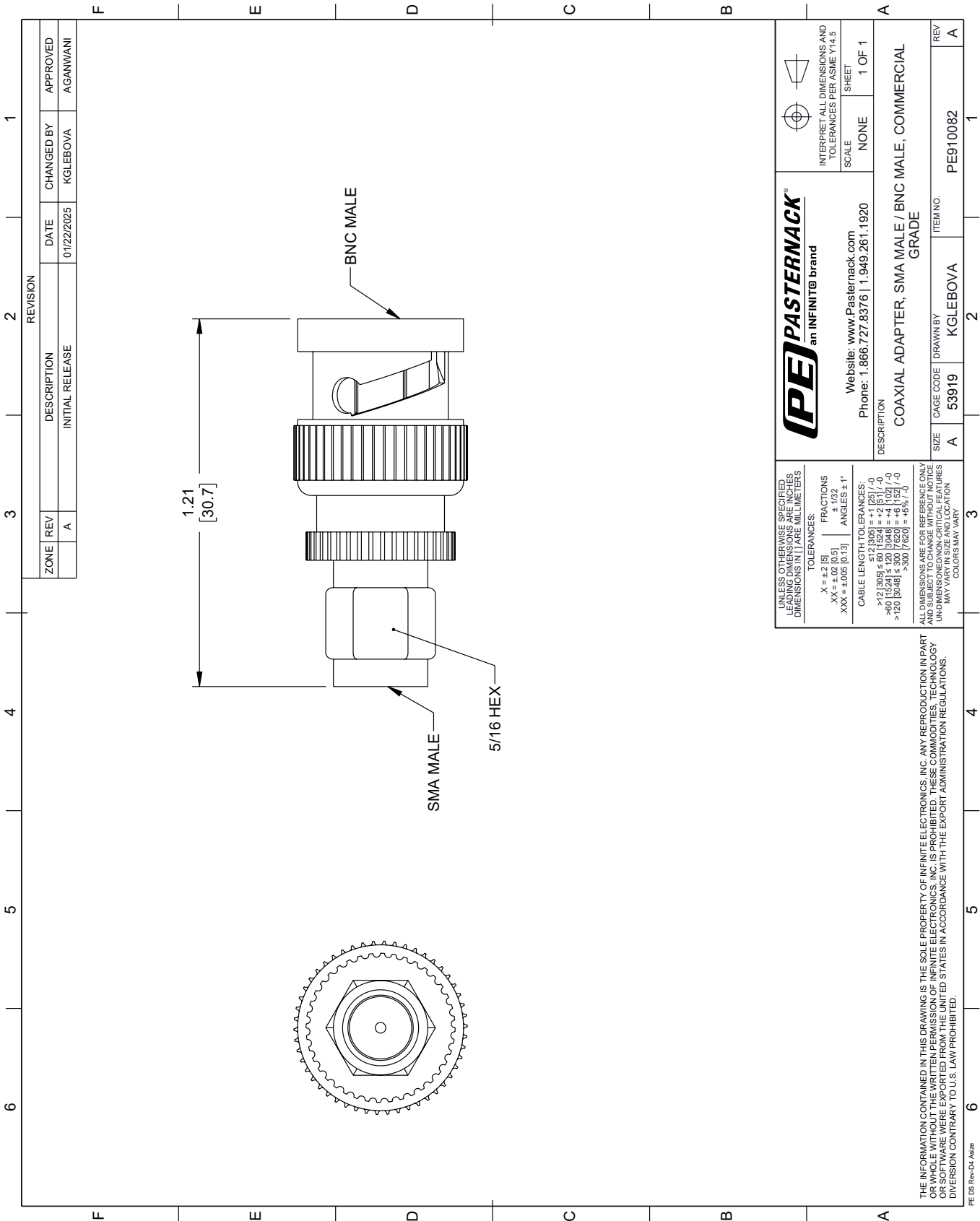
Commercial Grade BNC Male to SMA Male Adapter from Pasternack Enterprises has same day shipment for domestic and International orders. Our RF, microwave and millimeter wave products maintain a 99.4% availability and are part of the broadest selection in the industry.

Click the following link (or enter part number in "SEARCH" on website) to obtain additional part information including price, inventory and certifications: [Commercial Grade BNC Male to SMA Male Adapter PE910082](#)

URL: <https://www.pasternack.com/commercial-grade-bnc-male-to-sma-male-adapter-pe910082.html>

The information contained within this document is accurate to the best of our knowledge and representative of the part described herein. It may be necessary to make modifications to the part and/or the documentation of the part in order to implement improvements. Pasternack Enterprises reserves the right to make such changes as required. Unless otherwise stated, all specifications are nominal. Pasternack Enterprises does not make any representation or warranty regarding the suitability of the part described herein for any particular purpose, and Pasternack Enterprises does not assume liability arising out of the use of any part or document.

PE910082 CAD Drawing
Commercial Grade BNC Male to SMA Male Adapter



UNLESS OTHERWISE SPECIFIED, ALL DIMENSIONS ARE IN INCHES. DIMENSIONS IN [ ] ARE IN MILLIMETERS.		<b>PE PASTERNAK</b> an INFINITE brand		INTERPRET ALL DIMENSIONS AND TOLERANCES PER ASME Y14.5	
TOLERANCES:		Website: <a href="http://www.Pasternack.com">www.Pasternack.com</a>		SCALE: NONE	
X = ±.2 [5]		Phone: 1.866.727.8376   1.949.261.1920		SHEET 1 OF 1	
.XX = ±.02 [0.5]		DESCRIPTION		COAXIAL ADAPTER, SMA MALE / BNC MALE, COMMERCIAL GRADE	
.XXX = ±.005 [0.13]		CABLE LENGTH TOLERANCES:		SIZE A	
ANGLES ± 1°		>12 [305] ≤ 60 [1524] = ±.12 [3] / -0		CAGE CODE 53919	
		>60 [1524] ≤ 120 [3048] = ±.12 [3] / -0		DRAWN BY KGLEBOVA	
		>120 [3048] ≤ 300 [7620] = ±.12 [3] / -0		ITEM NO. PE910082	
		>300 [7620] = ±.12 [3] / -0		REV A	
ALL DIMENSIONS ARE FOR REFERENCE ONLY. UNLESS OTHERWISE SPECIFIED, DIMENSIONS ARE IN INCHES. DIMENSIONS IN [ ] ARE IN MILLIMETERS. UNLESS OTHERWISE SPECIFIED, DIMENSIONS ARE IN INCHES. DIMENSIONS IN [ ] ARE IN MILLIMETERS. MAY VARY IN SIZE AND LOCATION. COLORS MAY VARY.					