



## 2 Hole Flange Reverse Polarity SMA Female to Reverse Polarity SMA Female Adapter

### TECHNICAL DATA SHEET

PE91270

#### Configuration

|                |                             |
|----------------|-----------------------------|
| Connector 1    | SMA Female Reverse Polarity |
| Impedance 1    | 50 Ohms                     |
| Connector 2    | SMA Female Reverse Polarity |
| Impedance 2    | 50 Ohms                     |
| Adapter Design | Standard                    |
| Body Style     | Straight                    |
| Mount Method   | 2 Hole Flange               |

#### Electrical Specifications

|                                       |              |
|---------------------------------------|--------------|
| Frequency Range                       | DC to 18 GHz |
| Maximum VSWR                          | 1.2:1        |
| Maximum Operating Voltage, Vrms       | 335          |
| Dielectric Withstanding Voltage, Vrms | 1,500        |
| Minimum Insulation Resistance, mOhms  | 5,000        |

#### Mechanical Specifications

|                     |               |
|---------------------|---------------|
| <b>Size</b>         |               |
| Length, in [mm]     | 0.875 [22.23] |
| Width/Dia., in [mm] | 0.625 [15.88] |

#### Connector 1

|                                       |                             |
|---------------------------------------|-----------------------------|
| Type                                  | SMA Female Reverse Polarity |
| Inner Conductor Material and Plating  | Brass, Gold                 |
| Inner Conductor Plating Specification | MIL-G-45204                 |
| Body Material and Plating             | Passivated Stainless Steel  |
| Body Plating Specification            | QQ-P-35                     |
| Dielectric Type                       | PTFE                        |

#### Connector 2

|                                       |                             |
|---------------------------------------|-----------------------------|
| Type                                  | SMA Female Reverse Polarity |
| Inner Conductor Material and Plating  | Beryllium Copper, Gold      |
| Inner Conductor Plating Specification | MIL-G-45204                 |
| Body Material and Plating             | Passivated Stainless Steel  |
| Body Plating Specification            | QQ-P-35                     |
| Dielectric Type                       | PTFE                        |

#### Environmental Specifications

|                    |                   |
|--------------------|-------------------|
| <b>Temperature</b> |                   |
| Operating Range    | -65 to +165 deg C |

#### Compliance Certifications (visit [www.Pasternack.com](http://www.Pasternack.com) for current document)

|                 |            |
|-----------------|------------|
| RoHS Compliant  |            |
| REACH Compliant | 06/06/2014 |

Click the following link (or enter part number in "SEARCH" on website) to obtain additional part information including price, inventory and certifications: [2 Hole Flange Reverse Polarity SMA Female to Reverse Polarity SMA Female Adapter PE91270](#)



## 2 Hole Flange Reverse Polarity SMA Female to Reverse Polarity SMA Female Adapter

### TECHNICAL DATA SHEET

PE91270

#### Plotted and Other Data

Notes:

- Values at +25 °C, sea level

2 Hole Flange Reverse Polarity SMA Female to Reverse Polarity SMA Female Adapter from Pasternack Enterprises has same day shipment for domestic and International orders. Our RF, microwave and millimeter wave products maintain a 99% availability and are part of the broadest selection in the industry.

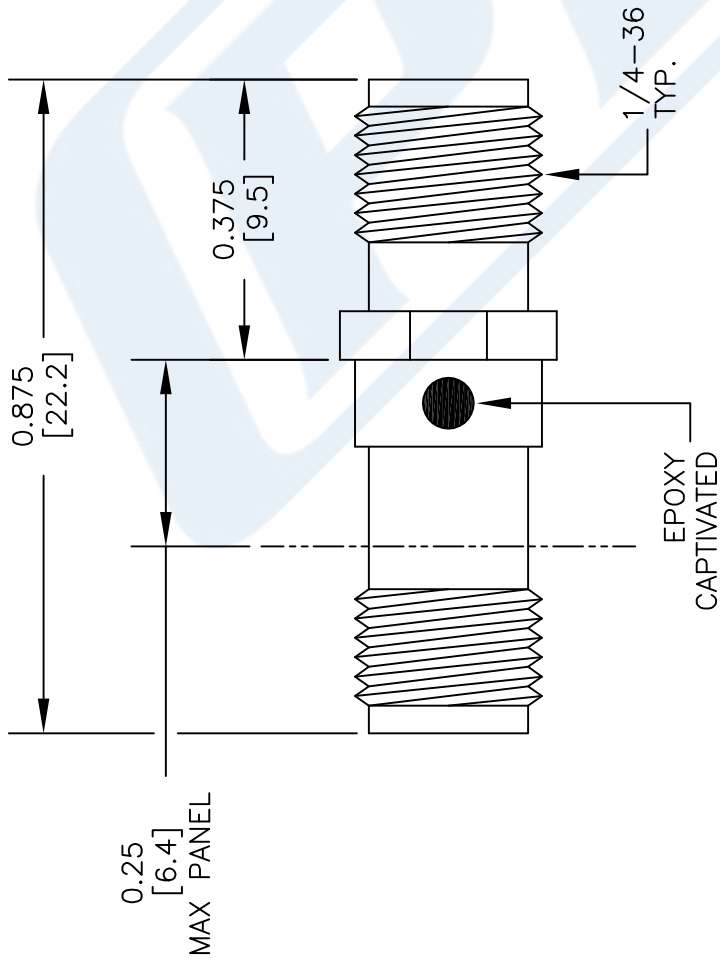
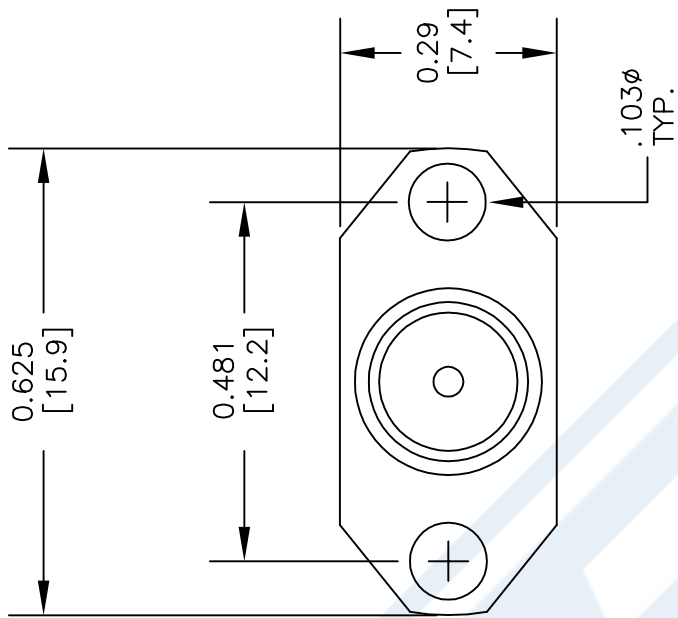
Click the following link (or enter part number in "SEARCH" on website) to obtain additional part information including price, inventory and certifications: [2 Hole Flange Reverse Polarity SMA Female to Reverse Polarity SMA Female Adapter PE91270](http://www.pasternack.com/sma-female-sma-female-straight-adapter-pe91270-p.aspx)

URL: <http://www.pasternack.com/sma-female-sma-female-straight-adapter-pe91270-p.aspx>

The information contained in this document is accurate to the best of our knowledge and representative of the part described herein. It may be necessary to make modifications to the part and/or the documentation of the part, in order to implement improvements. Pasternack reserves the right to make such changes as required. Unless otherwise stated, all specifications are nominal. Pasternack does not make any representation or warranty regarding the suitability of the part described herein for any particular purpose, and Pasternack does not assume any liability arising out of the use of any part or documentation.

# PE91270 CAD Drawing

## 2 Hole Flange Reverse Polarity SMA Female to Reverse Polarity SMA Female Adapter



REVERSE POLARITY  
SMA  
FEMALE

REVERSE POLARITY  
SMA  
FEMALE

DWG TITLE

**PE91270**

- NOTES:
1. UNLESS OTHERWISE SPECIFIED ALL DIMENSIONS ARE NOMINAL.
  2. ALL SPECIFICATIONS ARE SUBJECT TO CHANGE WITHOUT NOTICE AT ANY TIME.
  3. DIMENSIONS ARE IN INCHES [mm].

FSCM NO. 53919

CAD FILE 122914

SCALE N/A

SIZE A

150

**PE PASTERNAK®**  
THE ENGINEER'S RF SOURCE  
Pasternack Enterprises, Inc.  
P.O. Box 16759 | Irvine | CA | 92623

Phone: (949) 261-1920 | Fax: (949) 261-7451

Website: www.pasternack.com | E-Mail: sales@pasternack.com