



698-6000 MHz, 10 to 11 dBi gain, Log Periodic, Type N Female

## Antennas Technical Data Sheet

**PEANLP1015**

### Features

- Frequency coverage for 698 MHz to 6000 MHz
- Very High Gain 11 dBi Directional Antenna
- Each connector covers wide band of frequencies
- Easy Install universal mounting bracket provided
- Weatherproof ABS – UV Resistance PVC radome
- Pigtail - 8 inches
- N-Type Female connector

### Applications

- Point-to-point, LPWAN, LoRA, LTE-M, NB-IoT, IoT, CBRS, M2M applications
- 5G / 4G LTE B1 to B10, B12 to B20, B23, B22, B24, B25, B28 / 3G / GSM / AWS / WLAN/ CBRS operation supported
- 5G Bands supported
- DAS (Distributed Antenna Systems)
- IEEE 802.11a / b / g / n / ac / ad / ah / ax Wi-Fi applications
- Public safety, utilities, CCTV and local radio coverage
- Smart cities expansion for coverage and IOT / IIOT

### Description

Pasternack's PEANLP1015 high gain log periodic antenna is designed to operate from 698 to 6000 MHz. With 11 dBi of gain, PEANLP1015 is ideal for boosting 5G, LTE, CMDA, LoRA, IoT, WIFI. The Pasternack log periodic PEANLP1015 can be used for long distance directional communication over a wide range of frequencies.

Log periodic antennas from Pasternack function as boosters where the existing cellular signal is weak and needs to reach further distances. The PEANLP1015 has Vertical polarization, 65 horizontal beamwidth, and 50 vertical beamwidth for point to point communication. The included mounting brackets allow for either vertical or horizontal mounting configurations. The directional PEANLP1015 antenna has 1 Type N Female connector on a 8 inches long pigtail.

The 11 dBi max gain log periodic PEANLP1015 antenna operates in 5G bands n1, n2, n3, n5, n7, n8, n12, n13, n14, n18, n20, n25, n26, n28, n29, n30, n34, n38, n39, n40, n41, n46, n47, n48, n53, n65, n66, n67, n67, n70, n71, n77, n78, n79, n80, n81, n82, n83, n84, n85, n86, n89, n90, n91, n92, n93, n94, n95, n96, n97, n98. This 698 to 6000 MHz 5G directional log periodic antenna with Type N connector is in stock and ready to ship the same day. Contact Pasternack's knowledgeable and friendly technical support and sales staff for your answers on antennas or other products.

### Configuration

Design	Log Periodic
Band Type	Multi
Radiation Pattern	Directional
Polarization	Vertical
Cable Type	RG58U
Cable Length	7.87 in [199.9 mm]
Connector Type	N Female
Number of Ports	1

### Electrical Specifications

Description	Minimum	Typical	Maximum	Units
Frequency Range	698		6,000	MHz
Input VSWR		1.7:1	2:1	
Impedance		50		Ohms
Gain	10		11	dBi

Click the following link (or enter part number in "SEARCH" on website) to obtain additional part information including price, inventory and certifications: [698-6000 MHz, 10 to 11 dBi gain, Log Periodic, Type N Female PEANLP1015](#)



698-6000 MHz, 10 to 11 dBi gain, Log Periodic, Type N Female

## Antennas Technical Data Sheet

**PEANLP1015**

Horizontal Beam Width	50	65	Degrees
Vertical Beam Width	45	50	Degrees
Input Power		100	Watts

### Specifications by Band

Description	Band 1	Band 2	Band 3	Band 4	Band 5	Units
Range	0.698 to 0.96	1.71 to 2.7	3.3 to 6			GHz
Gain	10	11	11			dBi
Horizontal Beam Width	65	50	50			Degrees
Vertical Beam Width	50	45	45			Degrees
VSWR Max	2:1	1.7:1	2:1			
Maximum Input Power	100	100	100			Watts

### Mechanical Specifications

Radome Material ABS

#### Size

Overall Length 17.5 in [444.5 mm]  
 Width 8.26 in [209.8 mm]  
 Height 2.51 in [63.75 mm]  
 Weight 1.85 lbs [839.15 g]

### Environmental Specifications

#### Temperature

Operating Range -40 to +60 deg C  
 Wind Loading 150 MPH [241.4 KPH]

**Compliance Certifications** (see [product page](#) for current document)

### Plotted and Other Data

Notes:

Click the following link (or enter part number in "SEARCH" on website) to obtain additional part information including price, inventory and certifications: [698-6000 MHz, 10 to 11 dBi gain, Log Periodic, Type N Female PEANLP1015](#)



698-6000 MHz, 10 to 11 dBi gain, Log Periodic, Type N Female

## Antennas Technical Data Sheet

**PEANLP1015**

698-6000 MHz, 10 to 11 dBi gain, Log Periodic, Type N Female from Pasternack Enterprises has same day shipment for domestic and International orders. Our RF, microwave and millimeter wave products maintain a 99.4% availability and are part of the broadest selection in the industry.

Click the following link (or enter part number in "SEARCH" on website) to obtain additional part information including price, inventory and certifications: [698-6000 MHz, 10 to 11 dBi gain, Log Periodic, Type N Female PEANLP1015](https://www.pasternack.com/multi-antenna-698-mhz-6-ghz-0-dbi-gain-n-peanlp1015-p.aspx)

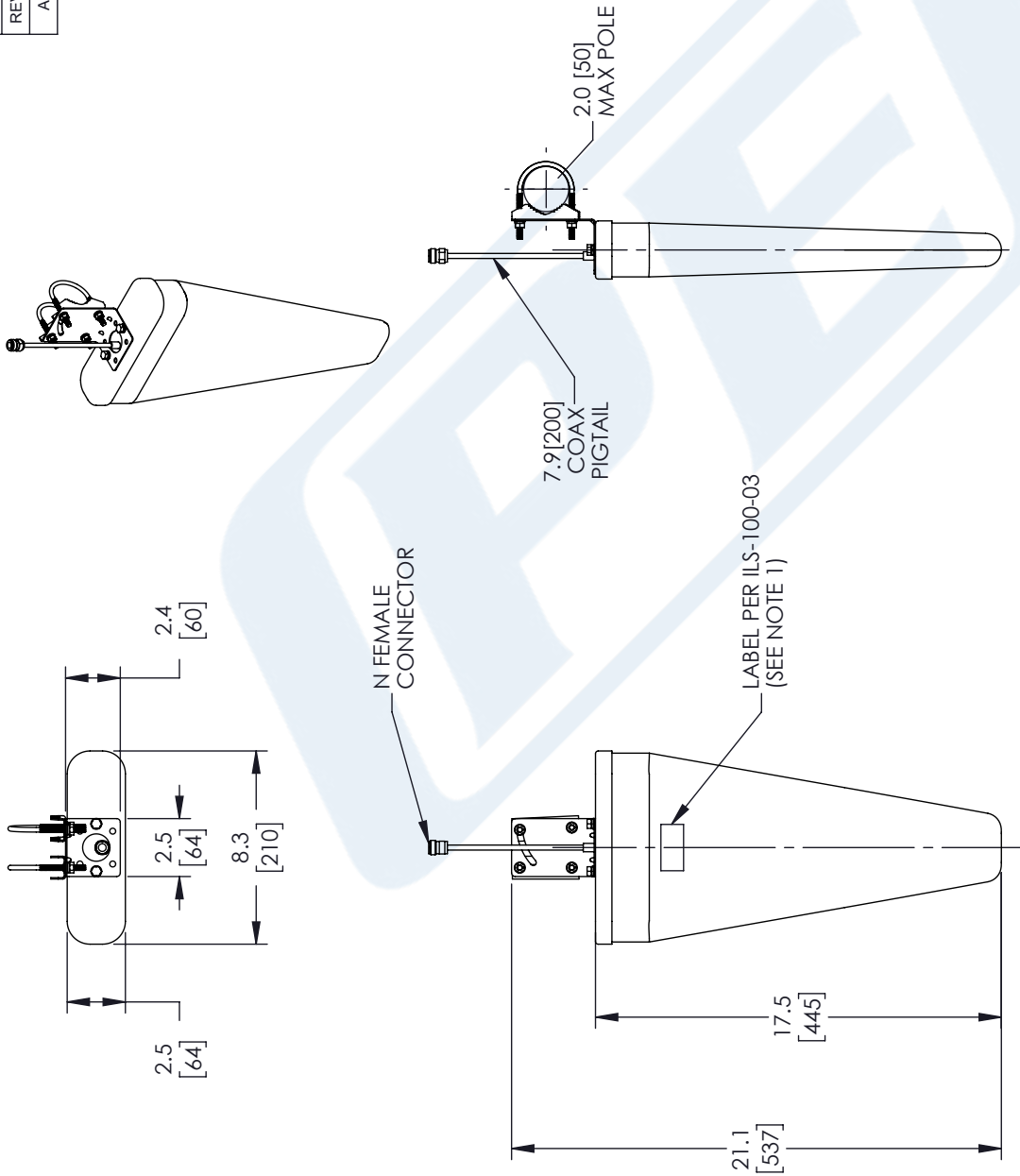
URL: <https://www.pasternack.com/multi-antenna-698-mhz-6-ghz-0-dbi-gain-n-peanlp1015-p.aspx>

The information contained in this document is accurate to the best of our knowledge and representative of the part described herein. It may be necessary to make modifications to the part and/or the documentation of the part, in order to implement improvements. Pasternack reserves the right to make such changes as required. Unless otherwise stated, all specifications are nominal. Pasternack does not make any representation or warranty regarding the suitability of the part described herein for any particular purpose, and Pasternack does not assume any liability arising out of the use of any part or documentation.

# PEANLP1015 CAD Drawing

698-6000 MHz, 10 to 11 dBi gain, Log Periodic, Type N Female

REVISIONS			
REV.	DESCRIPTION	DATE	APPROVED
A	INITIAL RELEASE	03/31/2022	K.HEITPAS



UNLESS OTHERWISE SPECIFIED LEADING DIMENSIONS ARE INCHES DIMENSIONS IN [ ] ARE MILLIMETERS

TOLERANCES:  
 .X = ±.2 [508] FRACTIONS ±.1/32  
 .XX = ±.02 [51] ±.1/32  
 .XXX = ±.005 [13] ANGLES ± 1°

CABLE LENGTH (L), TOLERANCES:  
 L ≤ 12 [305] = +1 [25] / -0  
 12 [305] < L ≤ 60 [1524] = +2 [51] / -0  
 60 [1524] < L ≤ 120 [3048] = +4 [102] / -0  
 120 [3048] < L ≤ 300 [7620] = +6 [152] / -0  
 300 [7620] < L = +5% / -0

ALL DIMENSIONS SHOWN ARE FOR REFERENCE ONLY.

THIRD-ANGLE PROJECTION

THE INFORMATION AND DESIGN IN THIS DOCUMENT IS THE PROPERTY OF PASTERNAK CORPORATION ALL RIGHTS RESERVED.

SHEET 1 OF 1

SCALE N/A

**PE PASTERNAK**  
 an INFINITI brand

Pasternack Enterprises, Inc.  
 P. O. Box 16759, Irvine, CA 92623.  
 Phone: 1.949.261.1920 | 1.866.727.8376  
 Fax: 1.949.261.7451  
 Website: www.pasternack.com  
 E-mail: sales@pasternack.com

ITEM NO. PEANLP1015

SIZE A

CAGE CODE 53919

DRAWN BY K.GLEBOVA

REV A

**NOTES:**  
 1. LABEL PER ILS-100-03 (FOR INTERNAL REFERENCE ONLY)  
 LABEL LOCATION FOR REFERENCE ONLY.

THESE COMMODITIES, TECHNOLOGY OR SOFTWARE WERE EXPORTED FROM THE UNITED STATES IN ACCORDANCE WITH THE EXPORT ADMINISTRATION REGULATIONS. DIVERSION CONTRARY TO U.S. LAW PROHIBITED.