

2 Way WR-90 Waveguide Power Divider UG Square Cover Flange From 9.3 GHz to 9.5 GHz, Aluminum

Waveguide Power Dividers Technical Data Sheet

PEW90DV001

Features

- 2-Way Waveguide Power Divider
- WR-90 Waveguide Interface
- 9.3 to 9.5 GHz Frequency Range
- Max Power 30 Watts (CW)
- Insertion Loss 0.2 dB max
- Isolation 18 dB min

Applications

- Test Benches
- Radar/Satellite
- Microwave Radio
- Attenuation Measurements
- Power Measurements

Description

Pasternack carries a wide selection of waveguide power dividers to fit your needs. These components are essential in many systems, allowing the combination of multiple signals or splitting of a single signal into multiple signals with equal magnitude and phase.

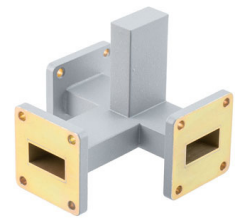
The PEW90DV001 is a 2-way waveguide power divider that operates from 9.3 to 9.5 GHz and can handle up to 30 Watts (CW) with 0.2 dB max insertion loss and 18 dB min isolation. The package uses WR-90 waveguide interface.

Electrical Specifications

Number of Output Ports 2

Description	Minimum	Typical	Maximum	Units
Frequency Range	9.3		9.5	GHz
Input VSWR			1.2:1	
Output VSWR			1.3:1	
Insertion Loss			0.2	dB
Isolation	18			dB
Amplitude Balance			0.15	dB
Phase Balance			3	Degrees
Input Power (CW)			30	Watts
Input Power (Peak)			30	kWatts

Click the following link (or enter part number in "SEARCH" on website) to obtain additional part information including price, inventory and certifications: [2 Way WR-90 Waveguide Power Divider UG Square Cover Flange From 9.3 GHz to 9.5 GHz, Aluminum PEW90DV001](#)



2 Way WR-90 Waveguide Power Divider UG Square
Cover Flange From 9.3 GHz to 9.5 GHz, Aluminum

Waveguide Power Dividers Technical Data Sheet

PEW90DV001

Mechanical Specifications

Size

Length	3.19 in [81.03 mm]
Width	3.15 in [80.01 mm]
Height	2.78 in [70.61 mm]
Weight	1.5 lbs [680.39 g]

Housing Material and Plating Aluminum, Gray

Configuration

Input Waveguide Size	WR-90
Input Flange Designation	FBP100
Input Flange Type	UG Cover
Output Waveguide Size	WR-90
Output Flange Type	UG Cover

Compliance Certifications (see [product page](#) for current document)

Plotted and Other Data

Notes:

2 Way WR-90 Waveguide Power Divider UG Square Cover Flange From 9.3 GHz to 9.5 GHz, Aluminum from Pasternack Enterprises has same day shipment for domestic and International orders. Our RF, microwave and millimeter wave products maintain a 99.4% availability and are part of the broadest selection in the industry.

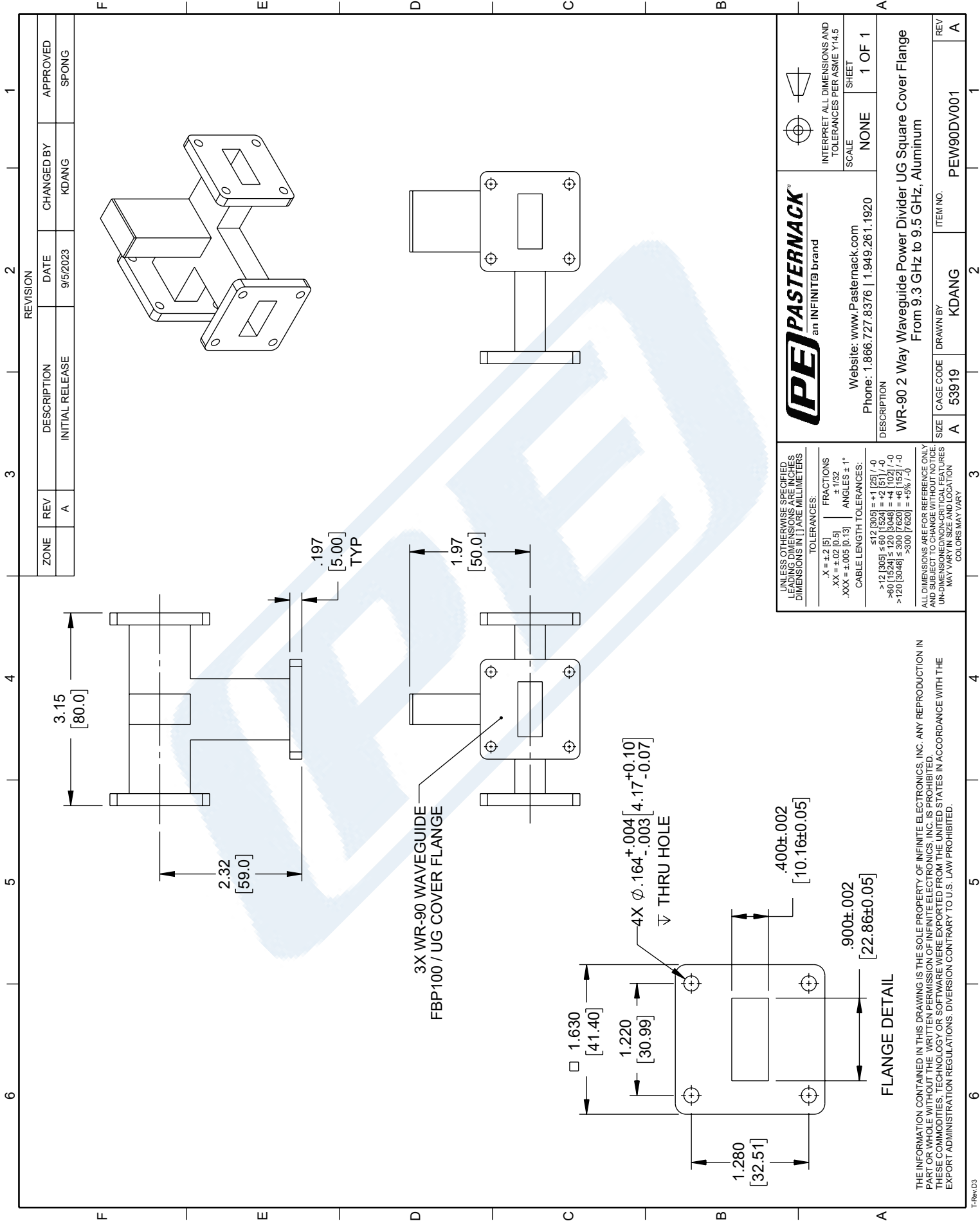
Click the following link (or enter part number in "SEARCH" on website) to obtain additional part information including price, inventory and certifications: [2 Way WR-90 Waveguide Power Divider UG Square Cover Flange From 9.3 GHz to 9.5 GHz, Aluminum PEW90DV001](#)

URL: <https://www.pasternack.com/pew90dv001-p.aspx>

The information contained in this document is accurate to the best of our knowledge and representative of the part described herein. It may be necessary to make modifications to the part and/or the documentation of the part, in order to implement improvements. Pasternack reserves the right to make such changes as required. Unless otherwise stated, all specifications are nominal. Pasternack does not make any representation or warranty regarding the suitability of the part described herein for any particular purpose, and Pasternack does not assume any liability arising out of the use of any part or documentation.

PEW90DV001 CAD Drawing

2 Way WR-90 Waveguide Power Divider UG Square Cover
Flange From 9.3 GHz to 9.5 GHz, Aluminum



ZONE	REV	DESCRIPTION	DATE	CHANGED BY	APPROVED
A	A	INITIAL RELEASE	9/5/2023	KDANG	SPONG

PE PASTERNAK
an INFINITIB brand

Website: www.Pasternack.com
Phone: 1.866.727.8376 | 1.949.261.1920

DESCRIPTION
WR-90 2 Way Waveguide Power Divider UG Square Cover Flange
From 9.3 GHz to 9.5 GHz, Aluminum

UNLESS OTHERWISE SPECIFIED,
DIMENSIONS IN [] ARE MILLIMETERS

TOLERANCES:

.X = ±.2 [5]	FRACTIONS
.XX = ±.02 [0.5]	± 1/32
.XXX = ±.005 [0.13]	ANGLES ± 1°

CABLE LENGTH TOLERANCES:

>12 [305] ≤ 60 [1524] = +1 [25] / -0
>60 [1524] ≤ 120 [3048] = +2 [51] / -0
>120 [3048] ≤ 300 [7620] = +6 [152] / -0
>300 [7620] = +5% / -0

ALL DIMENSIONS ARE FOR REFERENCE ONLY
AND SUBJECT TO CHANGE WITHOUT NOTICE
UN-DIMENSIONED NON-CRITICAL FEATURES
MAY VARY IN SIZE AND LOCATION
COLORS MAY VARY

INTERPRET ALL DIMENSIONS AND
TOLERANCES PER ASME Y14.5

SCALE NONE SHEET 1 OF 1

SIZE A	CAGE CODE 53919	DRAWN BY KDANG	ITEM NO. PEW90DV001
--------	-----------------	----------------	---------------------