

WR-42 UBR220 Flange to SMA Female Waveguide to Coax Adapter Operating from 17.6 GHz to 26.7 GHz in Brass

Waveguide to Coax Adapters Technical Data Sheet

PEWCA1100

Features

- 17.6 to 26.7 GHz Frequency Range
- WR-42 Waveguide Interface
- UBR220 Flange
- SMA Female RF Interface
- Comprehensive waveguide offering also include E-Bends, H-Bends, Sections, Filters, Terminations, Couplers, and more.

Applications

- Test Benches
- Radar
- Satellite
- Microwave Radio Systems
- Military and Space
- Communication Systems

Description

The PEWCA1100 is a right angle waveguide to coaxial adapter operating at a frequency range of 17.6 GHz to 26.7 GHz. This adapter offers a WR-42 waveguide interface size coupled with a precision tolerance UBR220 flange. The PEWCA1100 is constructed of brass and painted gray to ensure durability. The coaxial connector offered by this adapter uses an SMA Female connector.

Configuration

Waveguide Size	WR-42
Flange	UBR220
RF Connector	SMA Female
Body Geometry	Right Angle

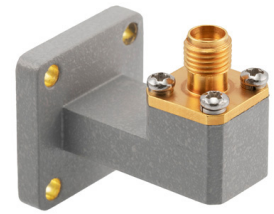
Electrical Specifications

Description	Minimum	Typical	Maximum	Units
Frequency Range	17.6		26.7	GHz
VSWR			1.25:1	
Insertion Loss			0.5	dB
Input Power (CW)			30	Watts

Mechanical Specifications

Size	
Length	1.18 in [29.97 mm]
Width	0.88 in [22.35 mm]
Height	0.88 in [22.35 mm]
Weight	1 lbs [453.59 g]
RF Connector	
Connector Type	SMA Female

Click the following link (or enter part number in "SEARCH" on website) to obtain additional part information including price, inventory and certifications: [WR-42 UBR220 Flange to SMA Female Waveguide to Coax Adapter Operating from 17.6 GHz to 26.7 GHz in Brass PEWCA1100](#)



WR-42 UBR220 Flange to SMA Female Waveguide to Coax Adapter Operating from 17.6 GHz to 26.7 GHz in Brass

Waveguide to Coax Adapters Technical Data Sheet

PEWCA1100

Waveguide Interface

Waveguide Type	WR-42
Flange Type	UBR220
Body Material and Plating	Brass

Compliance Certifications (see [product page](#) for current document)

Plotted and Other Data

Notes:

- Values at +25 °C, sea level unless stated otherwise

WR-42 UBR220 Flange to SMA Female Waveguide to Coax Adapter Operating from 17.6 GHz to 26.7 GHz in Brass from Pasternack Enterprises has same day shipment for domestic and International orders. Our RF, microwave and millimeter wave products maintain a 99.4% availability and are part of the broadest selection in the industry.

Click the following link (or enter part number in "SEARCH" on website) to obtain additional part information including price, inventory and certifications: [WR-42 UBR220 Flange to SMA Female Waveguide to Coax Adapter Operating from 17.6 GHz to 26.7 GHz in Brass PEWCA1100](#)

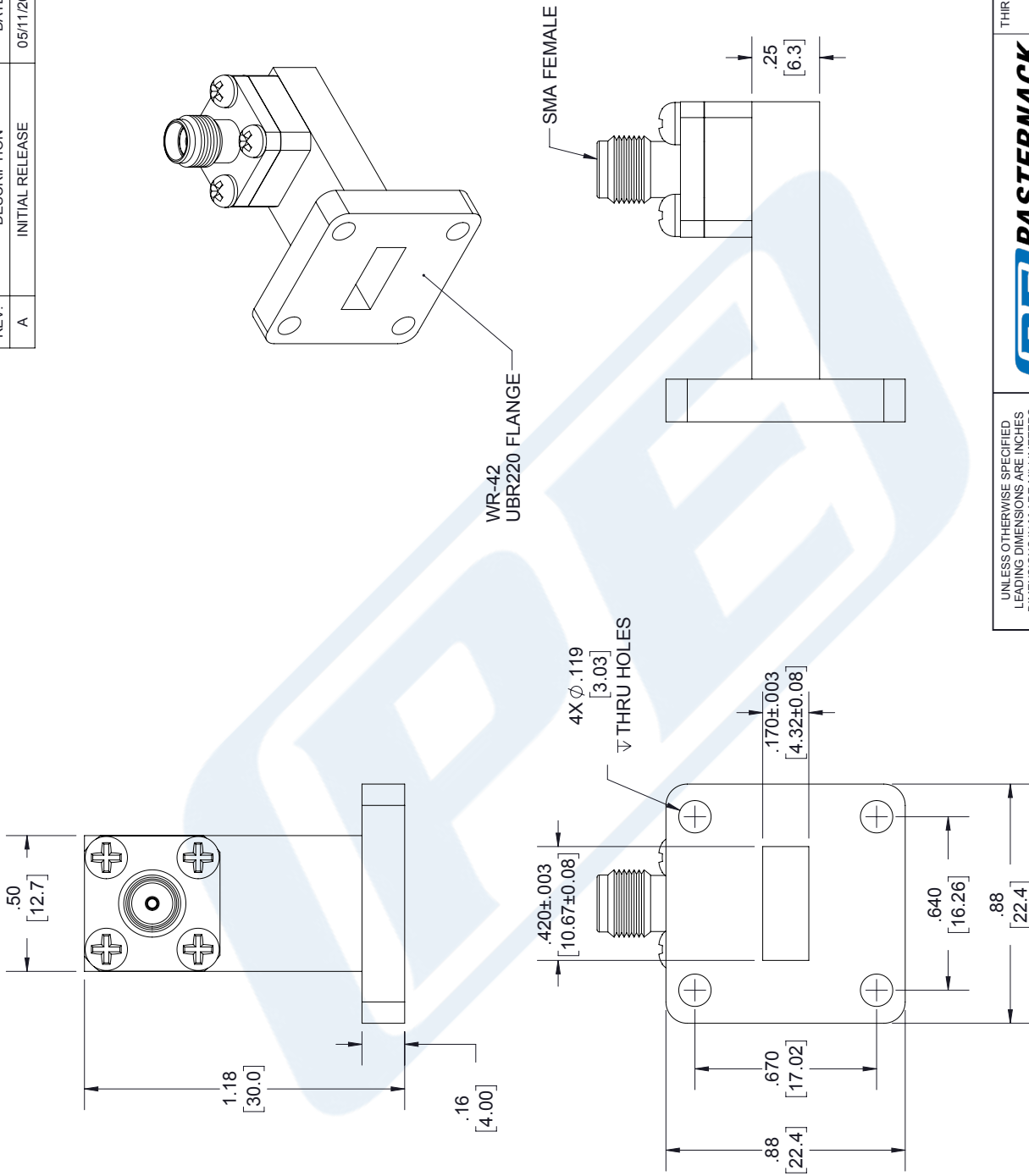
URL: <https://www.pasternack.com/wr42-ubr220-flange-to-sma-female-waveguide-coax-adapter-26.7-ghz-pewca1100-p.aspx>

The information contained in this document is accurate to the best of our knowledge and representative of the part described herein. It may be necessary to make modifications to the part and/or the documentation of the part, in order to implement improvements. Pasternack reserves the right to make such changes as required. Unless otherwise stated, all specifications are nominal. Pasternack does not make any representation or warranty regarding the suitability of the part described herein for any particular purpose, and Pasternack does not assume any liability arising out of the use of any part or documentation.

PEWCA1100 CAD Drawing

WR-42 UBR220 Flange to SMA Female Waveguide to Coax Adapter Operating from 17.6 GHz to 26.7 GHz in Brass

REVISIONS			
REV.	DESCRIPTION	DATE	APPROVED
A	INITIAL RELEASE	05/11/2020	SPONG



LABEL:
 PASTERNAK
 PEWCA1100
 D/C: YYWW

UNLESS OTHERWISE SPECIFIED LEADING DIMENSIONS ARE INCHES DIMENSIONS IN [] ARE MILLIMETERS

TOLERANCES:

.X = ± .2	[5.08]	FRACTIONS
.XX = ± .02	[.51]	± 1/32
.XXX = ± .005	[.13]	ANGLES ± 1°

CABLE LENGTH (L) TOLERANCES:

L ≤ 12	[305]	= +1 [25] / -0
12 [305] < L ≤ 60	[1524]	= +2 [51] / -0
60 [1524] < L ≤ 120	[3048]	= +4 [102] / -0
120 [3048] < L ≤ 300	[7620]	= +6 [152] / -0
> 300	[7620]	< L = +5% / L / -0

ALL DIMENSIONS SHOWN ARE FOR REFERENCE ONLY.

THIRD-ANGLE PROJECTION

THE INFORMATION AND DESIGN IN THIS DOCUMENT IS THE PROPERTY OF PASTERNAK CORPORATION ALL RIGHTS RESERVED.

SHEET 1 OF 1
 SCALE N/A

PEWCA1100
 an INFINIT® brand
 Pasternack Enterprises, Inc.
 P.O. Box 16759, Irvine, CA 92623.
 Phone: 1.949.261.1920 | 1.866.727.8376
 Fax: 1.949.261.7451
 Website: www.pasternack.com
 E-mail: sales@pasternack.com

SIZE	CAGE CODE	DRAWN BY	ITEM NO
A	53919	BPUCHASKI	PEWCA1100

REV A

THESE COMMODITIES, TECHNOLOGY OR SOFTWARE WERE EXPORTED FROM THE UNITED STATES IN ACCORDANCE WITH THE EXPORT ADMINISTRATION REGULATIONS. DIVERSION CONTRARY TO U.S. LAW PROHIBITED.