



6 Watts Low Power Commercial Grade WR-137 Waveguide Load 5.85 GHz to 8.2 GHz, Brass

Waveguide Terminations Technical Data Sheet

PEWTR1011A

Features

- WR-137
- 5.85 GHz to 8.2 GHz
- CPR-137G Flange
- 1.02:1 Typical VSWR
- 6 Watts Average Power Handling

Applications

- Radar Systems
- Military and Space
- Wireless Radio Systems
- Telecom Infrastructure
- Communication Systems
- R&D Labs
- Microwave Radio Systems

Description

The PEWTR1011A is a WR-137 waveguide termination / load that operates in the frequency range of 5.85 GHz to 8.2 GHz. This WR-137 waveguide termination has a typical VSWR of 1.02:1. These waveguide termination designs are made of painted brass copper and incorporate a standard CPR-137G flanges.

Pasternack waveguide terminations / loads are designed so virtually all applied power is absorbed, thus assuring a low VSWR. The power rating on this WR-137 termination is 6 watts, other detailed specifications and a diagram drawing can be found on this datasheet PDF below. Pasternack offers a complete family of waveguide terminations that are in-stock for same day shipment.

Electrical Specifications

Description	Minimum	Typical	Maximum	Units
Frequency Range	5.85		8.2	GHz
VSWR		1.02:1		
Input Power (CW)			6	Watts

Mechanical Specifications

Weight 0.945 lbs [428.64 g]

Description	Flange	Waveguide
Designation	None	WR-137
Type	CPR-137G	
Material	Brass	Brass

Click the following link (or enter part number in "SEARCH" on website) to obtain additional part information including price, inventory and certifications: [6 Watts Low Power Commercial Grade WR-137 Waveguide Load 5.85 GHz to 8.2 GHz, Brass PEWTR1011A](#)



6 Watts Low Power Commercial Grade WR-137 Waveguide
Load 5.85 GHz to 8.2 GHz, Brass

Waveguide Terminations Technical Data Sheet

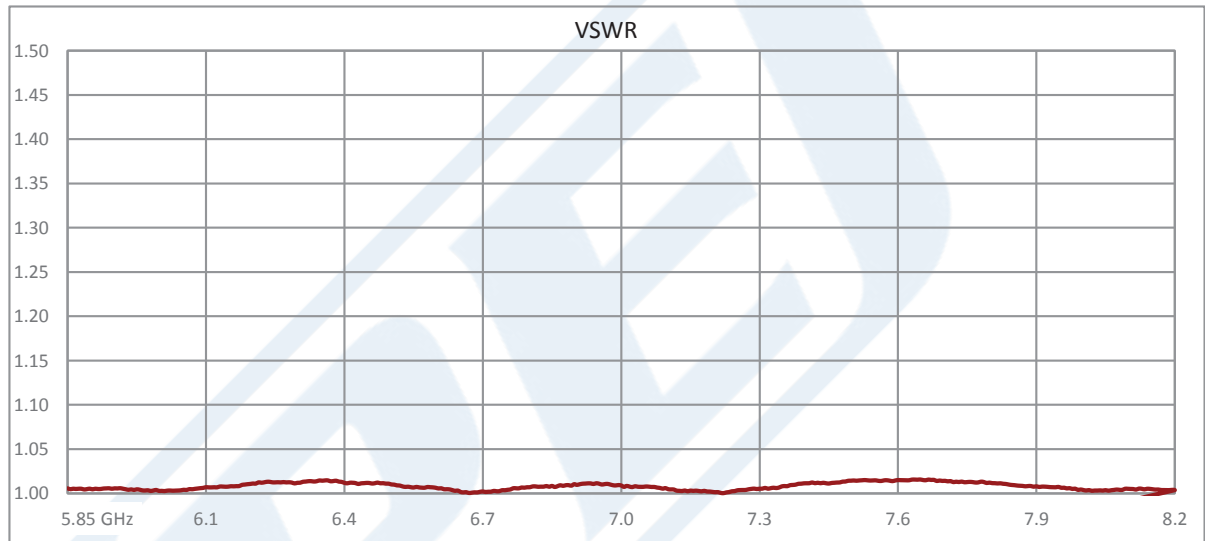
PEWTR1011A

Compliance Certifications (see [product page](#) for current document)

Plotted and Other Data

Notes:

Typical Performance Data



6 Watts Low Power Commercial Grade WR-137 Waveguide Load 5.85 GHz to 8.2 GHz, Brass from Pasternack Enterprises has same day shipment for domestic and International orders. Our RF, microwave and millimeter wave products maintain a 99.4% availability and are part of the broadest selection in the industry.

Click the following link (or enter part number in "SEARCH" on website) to obtain additional part information including price, inventory and certifications: [6 Watts Low Power Commercial Grade WR-137 Waveguide Load 5.85 GHz to 8.2 GHz, Brass PEWTR1011A](#)

URL: <https://www.pasternack.com/6-watts-wr-137-rf-load-5.85-8.2-ghz-commercial-grade-pewtr1011a-p.aspx>

The information contained in this document is accurate to the best of our knowledge and representative of the part described herein. It may be necessary to make modifications to the part and/or the documentation of the part, in order to implement improvements. Pasternack reserves the right to make such changes as required. Unless otherwise stated, all specifications are nominal. Pasternack does not make any representation or warranty regarding the suitability of the part described herein for any particular purpose, and Pasternack does not assume any liability arising out of the use of any part or documentation.

PEWTR1011A CAD Drawing

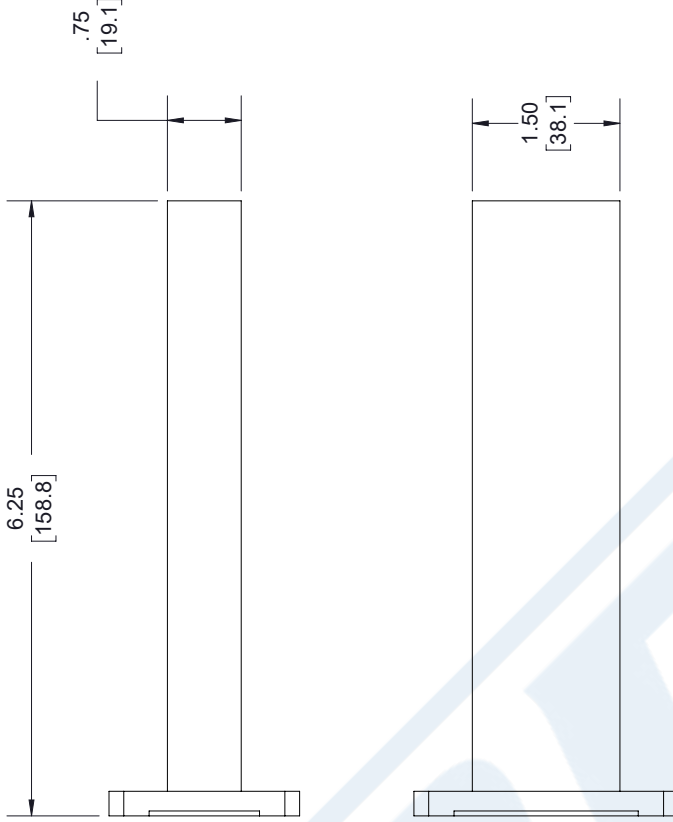
6 Watts Low Power Commercial Grade WR-137 Waveguide

Load 5.85 GHz to 8.2 GHz, Brass

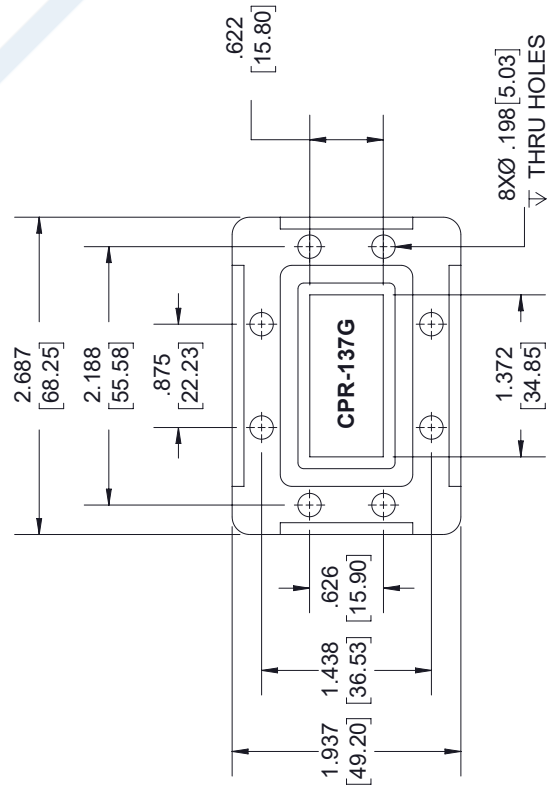
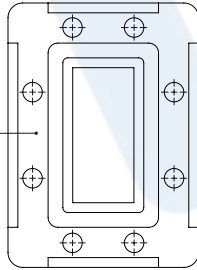
REVISIONS

REV.	DESCRIPTION	DATE	APPROVED
A	INITIAL RELEASE	09/16/19	S.PONG

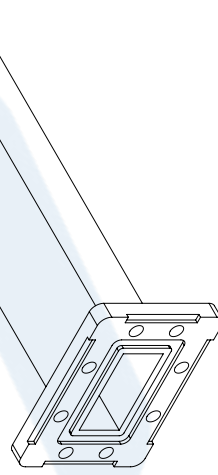
PASTERNAK
PEWTR1011A
D/C: YYWW



WR-137 WAVEGUIDE
CPR-137G FLANGE



FLANGE
DETAIL



UNLESS OTHERWISE SPECIFIED
LEADING DIMENSIONS ARE INCHES
DIMENSIONS IN [] ARE MILLIMETERS

TOLERANCES:
X±.2 [5.08] FRACTIONS
XX±.01 [.25] ±.132
XXX±.005 [.13] ANGLES ± 1°

ALL DIMENSIONS SHOWN
ARE FOR REFERENCE ONLY.

THIRD-ANGLE PROJECTION



Pasternack Enterprises, Inc.
P. O. Box 16759, Irvine, CA 92623.
Phone: 1,949,261,1920 | 1,866,727,8376
Fax: 1,949,261,7451
www.pasternack.com | e-mail: sales@pasternack.com

THE INFORMATION AND
DESIGN IN THIS DOCUMENT
IS THE PROPERTY OF
PASTERNAK CORPORATION.
ALL RIGHTS RESERVED.

SHEET 1 OF 1
SCALE N/A

SIZE	CAGE CODE	DRAWN BY	PART NUMBER	REV
A	53919	K.DANG	PEWTR1011A	A

THESE COMMODITIES, TECHNOLOGY OR SOFTWARE WERE EXPORTED FROM THE UNITED STATES IN ACCORDANCE WITH THE EXPORT ADMINISTRATION REGULATIONS. DIVERSION CONTRARY TO U.S. LAW PROHIBITED.