

SMA Male Right Angle to TNC Female Bulkhead Cable Using RG316 Coax, LF Solder



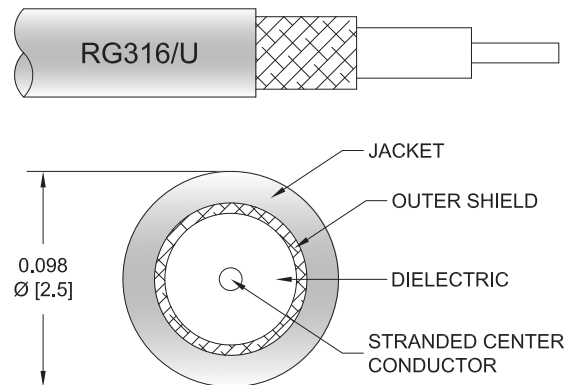
PE33073LF

Configuration

- Connector 1: SMA Male Right Angle
- Connector 2: TNC Female Bulkhead
- Cable Type: RG316
- Coax Flex Type: Flexible

Features

- Max Frequency 1 GHz
- 69% Phase Velocity
- FEP Jacket



Applications

- General Purpose
- Laboratory Use

Description

Pasternack's PE33073LF SMA male right angle to TNC female bulkhead cable using RG316 coax is part of our full line of RF components available for same-day shipping. Pasternack's flexible RF cable assemblies are ideal for applications where tight bends and flexure are required. This Pasternack SMA to TNC cable assembly has a male to female gender configuration with 50 ohm flexible RG316 coax. The PE33073LF SMA male to TNC female cable assembly operates to 1 GHz. The right angle SMA interface on the RG316 cable allows for easier connections in tight spaces. Our RF cable assembly with TNC bulkhead interface allows designers to create external connections on their product enclosures, and can be used in a variety of other rack mount and panel mount applications.

Custom versions of most RF cable assemblies can be built and shipped same day. Custom cable assembly lengths can be obtained by specifying the desired length on the web site at time of order or by contacting a sales representative. Other available RF cable assembly value added services include connector orientation or clocking, heat shrink booting and custom labeling. RF testing can also be performed to document the electrical performance of your cable assembly.

Electrical Specifications

Description	Minimum	Typical	Maximum	Units
Frequency Range	DC		1,000	MHz
VSWR		1.4:1		
Velocity of Propagation		69		%
Operating Voltage (AC)			335	Vrms
Jacket Spark			2,000	Vrms

Specifications by Frequency

SMA Male Right Angle to TNC Female Bulkhead
Cable Using RG316 Coax, LF Solder



PE33073LF

Part Number	Length	Description	F1	F2	F3	F4	F5	Units	Weight (lbs)
			Frequency	50	100	250	500	1000	
PE33073LF	Custom Lengths Available	Insertion Loss (Typ.)	0.08	0.11	0.16	0.238	0.38	dB/ft	
			0.25	0.37	0.53	0.79	1.25	dB/m	
PE33073LF-12	12 inch	Insertion Loss (Typ.)	0.38	0.41	0.46	0.54	0.68	dB	0.071
PE33073LF-24	24 inch	Insertion Loss (Typ.)	0.45	0.52	0.62	0.78	1.06	dB	0.082
PE33073LF-36	36 inch	Insertion Loss (Typ.)	0.53	0.63	0.78	1.02	1.44	dB	0.092
PE33073LF-48	48 inch	Insertion Loss (Typ.)	0.6	0.74	0.94	1.26	1.82	dB	0.102
PE33073LF-72	72 inch	Insertion Loss (Typ.)	0.75	0.96	1.26	1.73	2.58	dB	0.122

The insertion loss data for the base model does not include loss due to the connectors. Each length includes insertion loss due to the connectors.

Loss due to Connector 1: 0.2 dB
 Loss due to Connector 2: 0.1 dB
 Base Weight: 0.071 pounds
 Additional Weight per Inch: 0.00084 pounds

Mechanical Specifications

Cable Assembly

Weight 0.071 lbs [32.21 g]

Cable

Cable Type RG316
 Impedance 50 Ohms
 Inner Conductor Type Stranded
 Inner Conductor Material and Plating Copper Clad Steel, Silver
 Dielectric Type PTFE
 Number of Shields 1
 Shield Layer 1 Silver Plated Copper Braid
 Jacket Material FEP, Tan
 Jacket Diameter 0.102 in [2.59 mm]

SMA Male Right Angle to TNC Female Bulkhead
Cable Using RG316 Coax, LF Solder



PE33073LF

Connectors

Description	Connector 1	Connector 2
Type	SMA Male Right Angle	TNC Female Bulkhead
Specification	MIL-STD-348A	MIL-STD-348A
Impedance	50 Ohms	50 Ohms
Configuration	Right Angle	Straight
Contact Material and Plating	Brass, Gold	Brass, Gold
Contact Plating Specification	50 µin minimum	30 µin minimum
Dielectric Type	PTFE	PTFE
Body Material and Plating	Brass, Nickel	Brass, Nickel
Body Plating Specification	100 µin minimum	100 µin minimum
Coupling Nut Material and Plating	Brass, Nickel	
Coupling Nut Plating Specification	100 µin minimum	
Hex Size	5/16 inch	
Torque	5 in-lbs 0.57 Nm	

Environmental Specifications

Operating Range Temperature -55 to +165 deg C

Compliance Certifications (see [product page](#) for current document)

Plotted and Other Data

Notes:

SMA Male Right Angle to TNC Female Bulkhead Cable Using RG316 Coax, LF Solder



PE33073LF

Typical Performance Data

How to Order

Part Number Configuration:

PE33073LF - **xx** **uu**

Unit of Measure:
cm = Centimeters
<blank> = Inches

Length

Base Number

Example: PE33073LF-12 = 12 inches long cable
PE33073LF-100cm = 100 cm long cable

SMA Male Right Angle to TNC Female Bulkhead Cable Using RG316 Coax, LF Solder from Pasternack Enterprises has same day shipment for domestic and International orders. Our RF, microwave and millimeter wave products maintain a 99.4% availability and are part of the broadest selection in the industry.

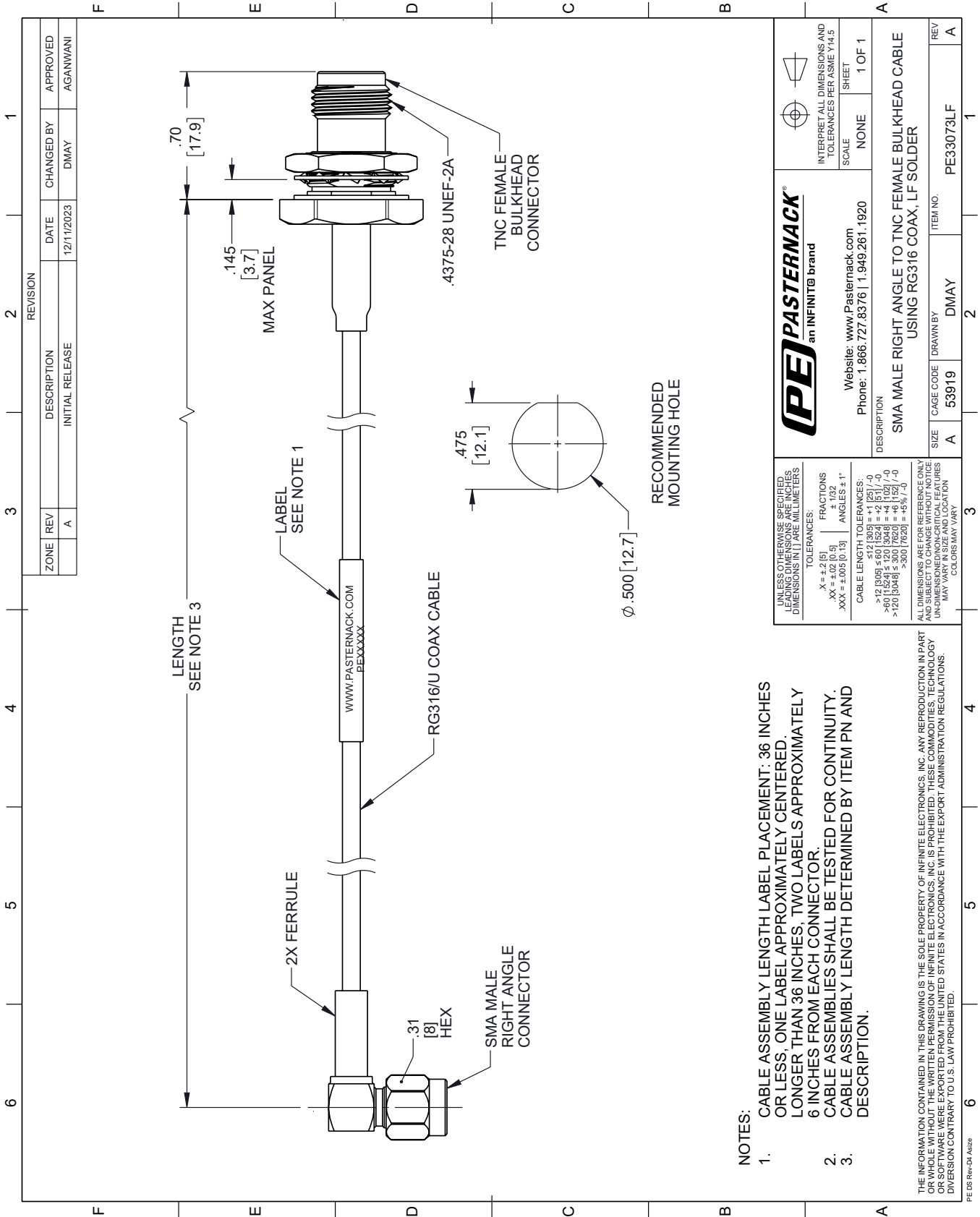
Click the following link (or enter part number in "SEARCH" on website) to obtain additional part information including price, inventory and certifications: [SMA Male Right Angle to TNC Female Bulkhead Cable Using RG316 Coax, LF Solder PE33073LF](#)

URL: <https://www.pasternack.com/sma-male-right-angle-to-tnc-female-bulkhead-cable-using-rg316-lf-solder-pe33073lf-p.aspx>

The information contained within this document is accurate to the best of our knowledge and representative of the part described herein. It may be necessary to make modifications to the part and/or the documentation of the part in order to implement improvements. Pasternack Enterprises reserves the right to make such changes as required. Unless otherwise stated, all specifications are nominal. Pasternack Enterprises does not make any representation or warranty regarding the suitability of the part described herein for any particular purpose, and Pasternack Enterprises does not assume liability arising out of the use of any part or document.

PE33073LF CAD Drawing

SMA Male Right Angle to TNC Female Bulkhead Cable Using RG316 Coax, LF Solder



- NOTES:**
1. CABLE ASSEMBLY LENGTH LABEL PLACEMENT: .36 INCHES OR LESS, ONE LABEL APPROXIMATELY CENTERED. LONGER THAN 36 INCHES, TWO LABELS APPROXIMATELY 6 INCHES FROM EACH CONNECTOR.
 2. CABLE ASSEMBLIES SHALL BE TESTED FOR CONTINUITY.
 3. CABLE ASSEMBLY LENGTH DETERMINED BY ITEM PN AND DESCRIPTION.

THE INFORMATION CONTAINED IN THIS DRAWING IS THE SOLE PROPERTY OF INFINITE ELECTRONICS, INC. ANY REPRODUCTION IN PART OR AS A WHOLE WITHOUT THE WRITTEN PERMISSION OF INFINITE ELECTRONICS, INC. IS PROHIBITED. THESE COMMODITIES, TECHNOLOGY OR SOFTWARE ARE EXPORT RESTRICTED. EXPORT OF THESE ITEMS FROM THE UNITED STATES IN ACCORDANCE WITH THE EXPORT ADMINISTRATION REGULATIONS. DIVERSION CONTRARY TO U.S. LAW PROHIBITED.

<p>PE PASTERNAK an INFINIT@ brand</p>		<p>INTERPRET ALL DIMENSIONS AND TOLERANCES PER ASME Y14.5</p>
<p>Website: www.Pasternack.com</p> <p>Phone: 1.866.727.8376 1.949.261.1920</p>		<p>SCALE: NONE</p> <p>SHEET: 1 OF 1</p>
<p>DESCRIPTION: SMA MALE RIGHT ANGLE TO TNC FEMALE BULKHEAD CABLE USING RG316 COAX, LF SOLDER</p>		
<p>SIZE: A</p>	<p>CAGE CODE: 53919</p>	<p>ITEM NO.: PE33073LF</p>

UNLESS OTHERWISE SPECIFIED, LEADING DIMENSIONS ARE IN INCHES. DIMENSIONS IN [] ARE MILLIMETERS.

TOLERANCES:

X = ±.2 (5)
 .XX = ±.02 (0.5) ± 1/32
 .XXX = ±.005 (0.13)

ANGLES: ±1°

CABLE LENGTH TOLERANCES:

≤ 12 (305) ±.60 (15.24) = ±.2 (5) / -0
 > 12 (305) ≤ 60 (1524) = ±.4 (10.2) / -0
 > 60 (1524) ≤ 120 (3048) = ±.4 (10.2) / -0
 > 120 (3048) ≤ 300 (7620) = ±.45% / -0
 > 300 (7620) = ±.45% / -0

ALL DIMENSIONS, SEE PART REFERENCES ONLY. DIMENSIONS CHANGING WITHOUT NOTICE AND SUBSTITUTIONS WITHOUT NOTICE. UNDIMENSIONED NON-CRITICAL FEATURES MAY VARY IN SIZE AND LOCATION. COLORS MAY VARY.

REVISION		DATE	CHANGED BY	APPROVED
ZONE	REV	DESCRIPTION	INITIAL RELEASE	
A			DMAY	AGANWANI