

75 Ohm BNC Male to 75 Ohm BNC Female Bulkhead Cable 24 Inch Length Using 75 Ohm RG179 Coax



PE33421-24

Configuration

- Connector 1: BNC Male
- Connector 2: BNC Female Bulkhead
- Cable Type: RG179
- Coax Flex Type: Flexible

Features

- Max Frequency 1 GHz
- FEP Jacket

Applications

- General Purpose
- Laboratory Use

Description

Pasternack's PE33421-24 75 ohm BNC male to 75 ohm BNC female bulkhead 24 inch cable using 75 ohm RG179 coax is part of our full line of RF components available for same-day shipping. Pasternack's flexible RF cable assemblies are ideal for applications where tight bends and flexure are required. This Pasternack BNC to BNC cable assembly has a male to female gender configuration with 75 ohm flexible RG179 coax. The PE33421-24 BNC male to BNC female cable assembly operates to 1 GHz. Our RF cable assembly with BNC bulkhead interface allows designers to create external connections on their product enclosures, and can be used in a variety of other rack mount and panel mount applications.

Custom versions of most RF cable assemblies can be built and shipped same day. Custom cable assembly lengths can be obtained by specifying the desired length on the web site at time of order or by contacting a sales representative. Other available RF cable assembly value added services include connector orientation or clocking, heat shrink booting and custom labeling. RF testing can also be performed to document the electrical performance of your cable assembly.

Electrical Specifications

Description	Minimum	Typical	Maximum	Units
Frequency Range	DC		1,000	MHz
Capacitance		23 [75.46]		pF/ft [pF/m]
Operating Voltage (AC)			500	Vrms

Specifications by Frequency

Description	F1	F2	F3	F4	F5	Units
Frequency	50	100	250	500	1,000	MHz
Insertion Loss (Max.)	0.38	0.48	0.57	0.61	0.8	dB

Electrical Specification Notes:

Insertion Loss does not include the loss of the connectors. Insertion Loss is estimated as 0.1 per connector.

75 Ohm BNC Male to 75 Ohm BNC Female Bulkhead
Cable 24 Inch Length Using 75 Ohm RG179 Coax



PE33421-24

Mechanical Specifications

Cable Assembly

Width/Diameter	0.689 in [17.5 mm]
Weight	0.097 lbs [44 g]

Cable

Cable Type	RG179
Impedance	75 Ohms
Inner Conductor Type	Stranded
Inner Conductor Material and Plating	Copper Clad Steel, Silver
Dielectric Type	PTFE
Number of Shields	1
Shield Layer 1	Silver Plated Copper Braid
Jacket Material	FEP, Tan
Jacket Diameter	0.1 in [2.54 mm]

Connectors

Description	Connector 1	Connector 2
Type	BNC Male	BNC Female Bulkhead
Impedance	75 Ohms	75 Ohms
Configuration	Straight	Straight
Contact Material and Plating	Brass, Gold	Brass, Gold
Contact Plating Specification	30μ in. minimum	30μ in. minimum
Dielectric Type	Teflon	Teflon
Body Material and Plating	Brass, Nickel	Brass, Nickel
Body Plating Specification	100μ in. minimum	100μ in. minimum

Environmental Specifications

Compliance Certifications (see [product page](#) for current document)

Plotted and Other Data

Notes:
Values at 25°C, sea level.

75 Ohm BNC Male to 75 Ohm BNC Female Bulkhead Cable 24 Inch Length Using 75 Ohm RG179 Coax

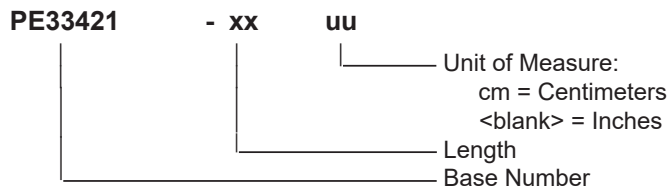


PE33421-24

Typical Performance Data

How to Order

Part Number Configuration:



Example: PE33421-12 = 12 inches long cable
PE33421-100cm = 100 cm long cable

75 Ohm BNC Male to 75 Ohm BNC Female Bulkhead Cable 24 Inch Length Using 75 Ohm RG179 Coax from Pasternack Enterprises has same day shipment for domestic and International orders. Our RF, microwave and millimeter wave products maintain a 99.4% availability and are part of the broadest selection in the industry.

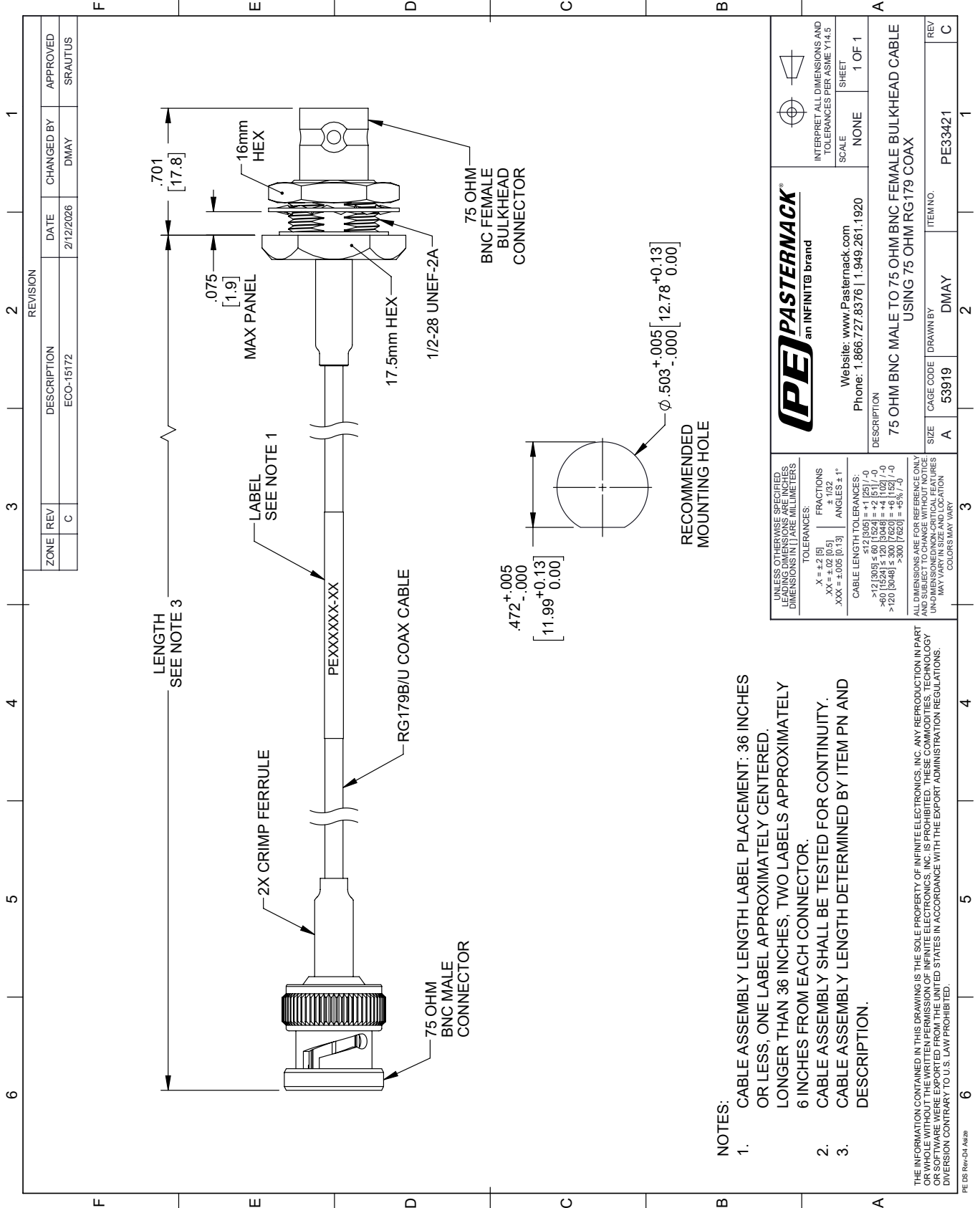
Click the following link (or enter part number in "SEARCH" on website) to obtain additional part information including price, inventory and certifications: [75 Ohm BNC Male to 75 Ohm BNC Female Bulkhead Cable 24 Inch Length Using 75 Ohm RG179 Coax PE33421-24](https://www.pasternack.com/75-ohm-bnc-male-to-75-ohm-bnc-female-bulkhead-cable-24-inch-length-using-rg179-pe33421-24-p.aspx)

URL: <https://www.pasternack.com/75-ohm-bnc-male-to-75-ohm-bnc-female-bulkhead-cable-24-inch-length-using-rg179-pe33421-24-p.aspx>

The information contained within this document is accurate to the best of our knowledge and representative of the part described herein. It may be necessary to make modifications to the part and/or the documentation of the part in order to implement improvements. Pasternack Enterprises reserves the right to make such changes as required. Unless otherwise stated, all specifications are nominal. Pasternack Enterprises does not make any representation or warranty regarding the suitability of the part described herein for any particular purpose, and Pasternack Enterprises does not assume liability arising out of the use of any part or document.

PE33421-24 CAD Drawing

75 Ohm BNC Male to 75 Ohm BNC Female Bulkhead Cable 24 Inch Length Using 75 Ohm RG179 Coax



REVISION		DATE	CHANGED BY	APPROVED
ZONE	REV	DESCRIPTION		
	C	ECO-15172	DMAY	SRAUTUS

PE PASTERNAK
an INFINITE brand

Website: www.Pasternack.com
Phone: 1.866.727.8376 | 1.949.261.1920

INTERPRET ALL DIMENSIONS AND TOLERANCES PER ASME Y14.5

SCALE: NONE SHEET: 1 OF 1

DESCRIPTION: 75 OHM BNC MALE TO 75 OHM BNC FEMALE BULKHEAD CABLE USING 75 OHM RG179 COAX

SIZE	A	CAGE CODE	DMAY	ITEM NO.	PE33421
REV	C	DRAWN BY	DMAY		

UNLESS OTHERWISE SPECIFIED, DIMENSIONS ARE IN INCHES. DIMENSIONS IN [] ARE MILLIMETERS.

TOLERANCES:

X = ±.2 [5] FRACTIONS ±.132

.XX = ±.02 [0.5] ANGLES ± 1°

.XXX = ±.005 [0.13]

CABLE LENGTH TOLERANCES:

<12 [305] ≤ 60 [1524] = ±.125 [1.27] / -0

>60 [1524] ≤ 120 [3048] = ±.125 [1.27] / -0

>120 [3048] ≤ 300 [7620] = ±.125 [1.27] / -0

>300 [7620] = ±.125 [1.27] / -0

ALL DIMENSIONS ARE FOR REFERENCE ONLY. UNDIMENSIONED NON-CRITICAL FEATURES MAY VARY IN SIZE AND LOCATION. COLORS MAY VARY.

THE INFORMATION CONTAINED IN THIS DRAWING IS THE SOLE PROPERTY OF INFINITE ELECTRONICS, INC. ANY REPRODUCTION IN PART OR WHOLE WITHOUT THE WRITTEN PERMISSION OF INFINITE ELECTRONICS, INC. IS PROHIBITED. THESE COMMODITIES, TECHNOLOGY OR SOFTWARE WERE EXPORTED FROM THE UNITED STATES IN ACCORDANCE WITH THE EXPORT ADMINISTRATION REGULATIONS. DIVERSION CONTRARY TO U.S. LAW PROHIBITED.

PE DS Rev-04 Add2

- NOTES:**
- CABLE ASSEMBLY LENGTH LABEL PLACEMENT: 36 INCHES OR LESS, ONE LABEL APPROXIMATELY CENTERED. LONGER THAN 36 INCHES, TWO LABELS APPROXIMATELY 6 INCHES FROM EACH CONNECTOR.
 - CABLE ASSEMBLY SHALL BE TESTED FOR CONTINUITY.
 - CABLE ASSEMBLY LENGTH DETERMINED BY ITEM PN AND DESCRIPTION.