

SMA Male to SMB Plug Cable 48 Inch Length Using PE-B100 Coax



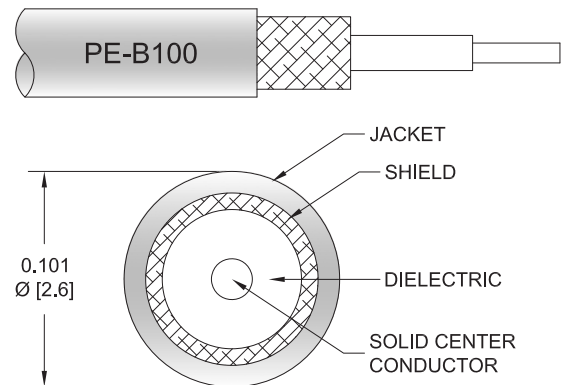
PE34455-48

Configuration

- Connector 1: SMA Male
- Connector 2: SMB Plug
- Cable Type: PE-B100
- Coax Flex Type: Flexible

Features

- Max Frequency 4 GHz
- 62% Phase Velocity
- Double Shielded
- PVC Jacket



Applications

- General Purpose
- Laboratory Use

Description

Pasternack's PE34455-48 SMA male to SMB plug 48 inch cable using PE-B100 coax is part of our full line of RF components available for same-day shipping. Pasternack's flexible RF cable assemblies are ideal for applications where tight bends and flexure are required. This Pasternack SMA to SMB cable assembly has a male to plug gender configuration with 50 ohm flexible PE-B100 coax. The PE34455-48 SMA male to SMB plug cable assembly operates to 4 GHz. The double shielding of this Pasternack cable assembly provides excellent shielding effectiveness.

Custom versions of most RF cable assemblies can be built and shipped same day. Custom cable assembly lengths can be obtained by specifying the desired length on the web site at time of order or by contacting a sales representative. Other available RF cable assembly value added services include connector orientation or clocking, heat shrink booting and custom labeling. RF testing can also be performed to document the electrical performance of your cable assembly.

Electrical Specifications

| Description | Minimum | Typical | Maximum | Units |
|-------------------------|---------|-------------|---------|--------------|
| Frequency Range | DC | | 4 | GHz |
| VSWR | | | 1.4:1 | |
| Velocity of Propagation | | 62 | | % |
| Capacitance | | 38 [124.67] | | pF/ft [pF/m] |
| Operating Voltage (AC) | | | 335 | Vrms |

Mechanical Specifications

Cable Assembly

| | |
|----------------|--------------------|
| Width/Diameter | 0.312 in [7.92 mm] |
| Weight | 0.013 lbs [5.9 g] |

SMA Male to SMB Plug Cable 48 Inch Length Using PE-B100 Coax



PE34455-48

Cable

| | |
|--------------------------------------|---------------------|
| Cable Type | PE-B100 |
| Impedance | 50 Ohms |
| Inner Conductor Type | Stranded |
| Inner Conductor Material and Plating | Copper Clad Steel |
| Dielectric Type | PE |
| Number of Shields | 2 |
| Shield Layer 1 | PVC |
| Shield Layer 2 | Tinned Copper Braid |
| Jacket Material | PVC, Black |
| Jacket Diameter | 0.101 in [2.57 mm] |

Connectors

| Description | Connector 1 | Connector 2 |
|------------------------------------|------------------|------------------------|
| Type | SMA Male | SMB Plug |
| Specification | MIL-STD-348A | MIL-STD-348A |
| Impedance | 50 Ohms | 50 Ohms |
| Configuration | Straight | Straight |
| Contact Material and Plating | Brass, Gold | Beryllium Copper, Gold |
| Contact Plating Specification | 30μ in. Minimum | 30μ in. minimum |
| Dielectric Type | PTFE | Teflon |
| Body Material and Plating | Brass, Nickel | Brass, Nickel |
| Body Plating Specification | 100μ in. Minimum | 100μ in. minimum |
| Coupling Nut Material and Plating | Brass, Nickel | |
| Coupling Nut Plating Specification | 100μ in. Minimum | |
| Hex Size | 5/16 in | |
| Torque | 5 in-lbs 0.57 Nm | |

Environmental Specifications

Compliance Certifications (see [product page](#) for current document)

Plotted and Other Data

Notes:

Values at 25°C, sea level.

SMA Male to SMB Plug Cable 48 Inch Length Using PE-B100 Coax

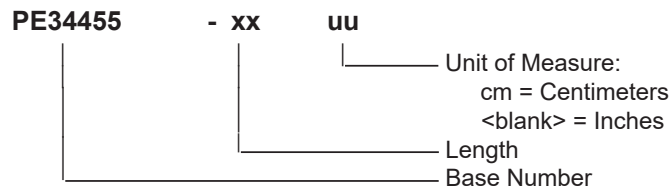


PE34455-48

Typical Performance Data

How to Order

Part Number Configuration:



Example: PE34455-12 = 12 inches long cable
PE34455-100cm = 100 cm long cable

SMA Male to SMB Plug Cable 48 Inch Length Using PE-B100 Coax from Pasternack Enterprises has same day shipment for domestic and International orders. Our RF, microwave and millimeter wave products maintain a 99.4% availability and are part of the broadest selection in the industry.

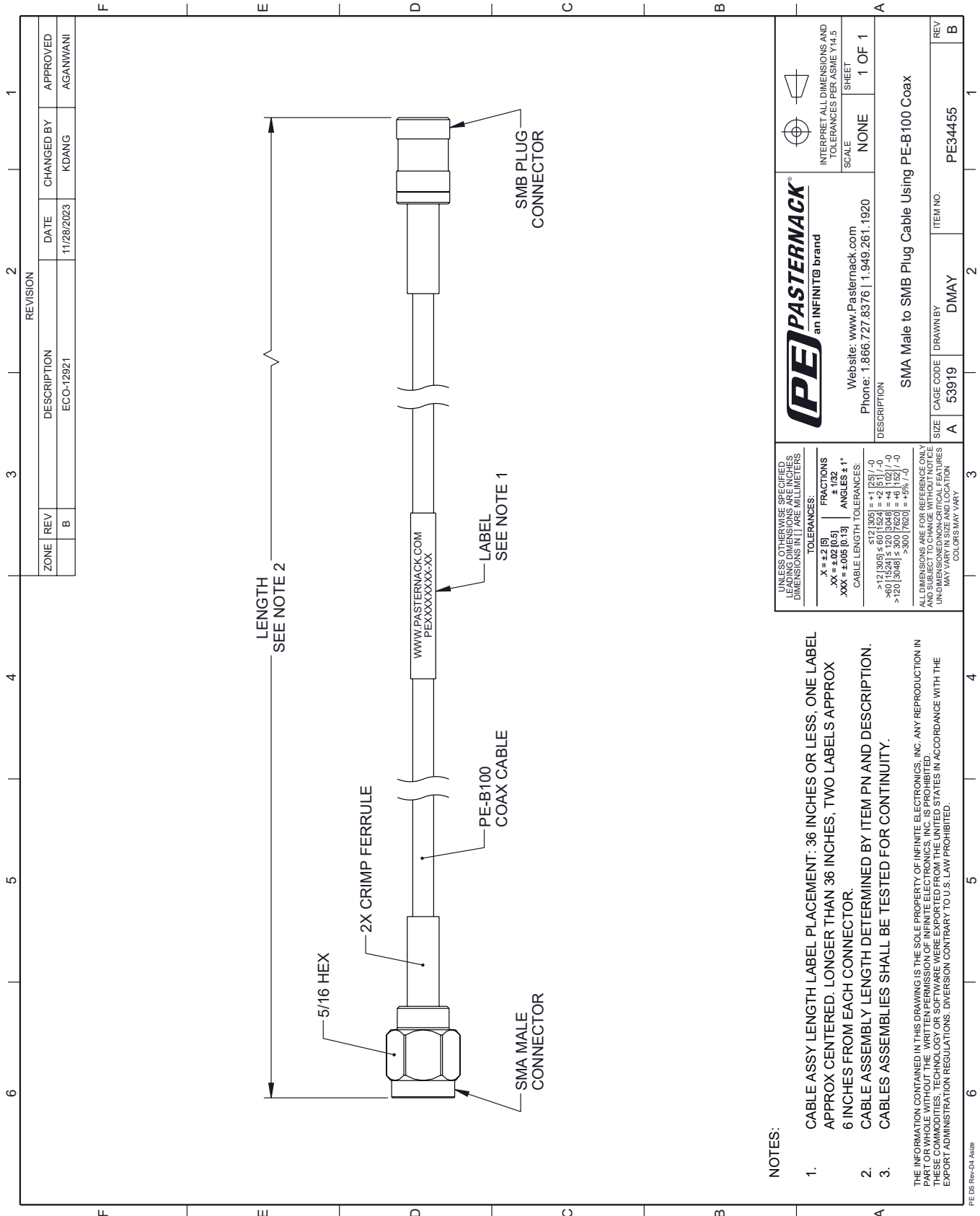
Click the following link (or enter part number in "SEARCH" on website) to obtain additional part information including price, inventory and certifications: [SMA Male to SMB Plug Cable 48 Inch Length Using PE-B100 Coax PE34455-48](https://www.pasternack.com/sma-male-smb-plug-pe-b100-cable-assembly-pe34455-48-p.aspx)

URL: <https://www.pasternack.com/sma-male-smb-plug-pe-b100-cable-assembly-pe34455-48-p.aspx>

The information contained within this document is accurate to the best of our knowledge and representative of the part described herein. It may be necessary to make modifications to the part and/or the documentation of the part in order to implement improvements. Pasternack Enterprises reserves the right to make such changes as required. Unless otherwise stated, all specifications are nominal. Pasternack Enterprises does not make any representation or warranty regarding the suitability of the part described herein for any particular purpose, and Pasternack Enterprises does not assume liability arising out of the use of any part or document.

PE34455-48 CAD Drawing

SMA Male to SMB Plug Cable 48 Inch Length Using PE-B100 Coax



| | | |
|---|------------------|---|
| <p>PASTERNAK an INFINITB brand</p> | | <p>INTERPRET ALL DIMENSIONS AND TOLERANCES PER ASME Y14.5</p> |
| Website: www.Pasternack.com Phone: 1.866.727.8376 1.949.261.1920 | | SCALE: NONE SHEET: 1 OF 1 |
| DESCRIPTION: SMA Male to SMB Plug Cable Using PE-B100 Coax | | |
| SIZE: A | CAGE CODE: 53919 | DRAWN BY: DMAY |
| ITEM NO.: PE34455 | | REV: B |

UNLESS OTHERWISE SPECIFIED, LEADING DIMENSIONS ARE IN INCHES, DIMENSIONS IN [] ARE MILLIMETERS.

TOLERANCES:

| | |
|---------------------|------------------|
| .X = ±.2 [5] | FRACTIONS ± 1/32 |
| .XX = ±.02 [0.5] | ANGLES ± 1° |
| .XXX = ±.005 [0.13] | |

CABLE LENGTH TOLERANCES:

| | |
|-------------------------|------------|
| <12 [305] | ±.1 [2.5] |
| >12 [305] ≤ 60 [1524] | ±.2 [5.1] |
| >60 [1524] ≤ 120 [3048] | ±.4 [10.2] |
| >120 [3048] | ±.8 [20.3] |

ALL DIMENSIONS ARE FOR REFERENCE ONLY. UNDIMENSIONED NON-CRITICAL FEATURES MAY VARY IN SIZE AND LOCATION. COLORS MAY VARY.