

SMC Plug to SMC Plug Cable 12 Inch Length Using PE-B100 Coax



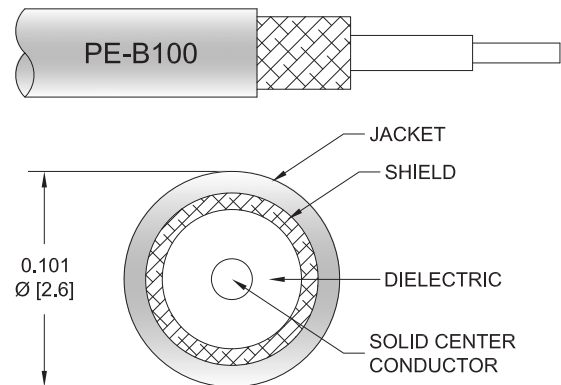
PE34501LF-12

Configuration

- Connector 1: SMC Plug
- Connector 2: SMC Plug
- Cable Type: PE-B100
- Coax Flex Type: Flexible

Features

- Max Frequency 6 GHz
- 62% Phase Velocity
- Double Shielded
- PVC Jacket



Applications

- General Purpose
- Laboratory Use

Description

Pasternack's PE34501LF-12 SMC plug to SMC plug 12 inch cable using PE-B100 coax is part of our full line of RF components available for same-day shipping. Pasternack's flexible RF cable assemblies are ideal for applications where tight bends and flexure are required. This Pasternack SMC to SMC cable assembly has a plug to plug gender configuration with 50 ohm flexible PE-B100 coax. The PE34501LF-12 SMC plug to SMC plug cable assembly operates to 6 GHz. The double shielding of this Pasternack cable assembly provides excellent shielding effectiveness.

Custom versions of most RF cable assemblies can be built and shipped same day. Custom cable assembly lengths can be obtained by specifying the desired length on the web site at time of order or by contacting a sales representative. Other available RF cable assembly value added services include connector orientation or clocking, heat shrink booting and custom labeling. RF testing can also be performed to document the electrical performance of your cable assembly.

Electrical Specifications

| Description | Minimum | Typical | Maximum | Units |
|-------------------------|---------|-------------|---------|--------------|
| Frequency Range | DC | | 6 | GHz |
| VSWR | | | 1.4:1 | |
| Velocity of Propagation | | 62 | | % |
| Capacitance | | 38 [124.67] | | pF/ft [pF/m] |
| Operating Voltage (AC) | | | 335 | Vrms |

Mechanical Specifications

Cable Assembly

| | |
|----------------|--------------------|
| Width/Diameter | 0.25 in [6.35 mm] |
| Weight | 0.011 lbs [4.99 g] |

SMC Plug to SMC Plug Cable 12 Inch Length Using PE-B100 Coax



PE34501LF-12

Cable

| | |
|--------------------------------------|---------------------|
| Cable Type | PE-B100 |
| Impedance | 50 Ohms |
| Inner Conductor Type | Stranded |
| Inner Conductor Material and Plating | Copper Clad Steel |
| Dielectric Type | PE |
| Number of Shields | 2 |
| Shield Layer 1 | PVC |
| Shield Layer 2 | Tinned Copper Braid |
| Jacket Material | PVC, Black |
| Jacket Diameter | 0.101 in [2.57 mm] |

Connectors

| Description | Connector 1 | Connector 2 |
|-------------------------------|------------------------|------------------------|
| Type | SMC Plug | SMC Plug |
| Specification | MIL-STD-348A | MIL-STD-348A |
| Impedance | 50 Ohms | 50 Ohms |
| Configuration | Straight | Straight |
| Contact Material and Plating | Beryllium Copper, Gold | Beryllium Copper, Gold |
| Contact Plating Specification | 30μ in. minimum | 30μ in. minimum |
| Dielectric Type | Teflon | Teflon |
| Body Material and Plating | Brass, Nickel | Brass, Nickel |
| Body Plating Specification | 100μ in. minimum | 100μ in. minimum |
| Hex Size | 1/4 in | 1/4 in |

Environmental Specifications

Compliance Certifications (see [product page](#) for current document)

Plotted and Other Data

Notes:

Values at 25°C, sea level.

SMC Plug to SMC Plug Cable 12 Inch Length Using PE-B100 Coax

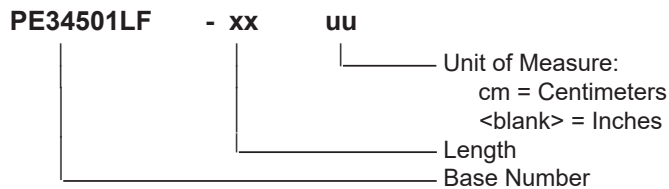


PE34501LF-12

Typical Performance Data

How to Order

Part Number Configuration:



Example: PE34501LF-12 = 12 inches long cable
PE34501LF-100cm = 100 cm long cable

SMC Plug to SMC Plug Cable 12 Inch Length Using PE-B100 Coax from Pasternack Enterprises has same day shipment for domestic and International orders. Our RF, microwave and millimeter wave products maintain a 99.4% availability and are part of the broadest selection in the industry.

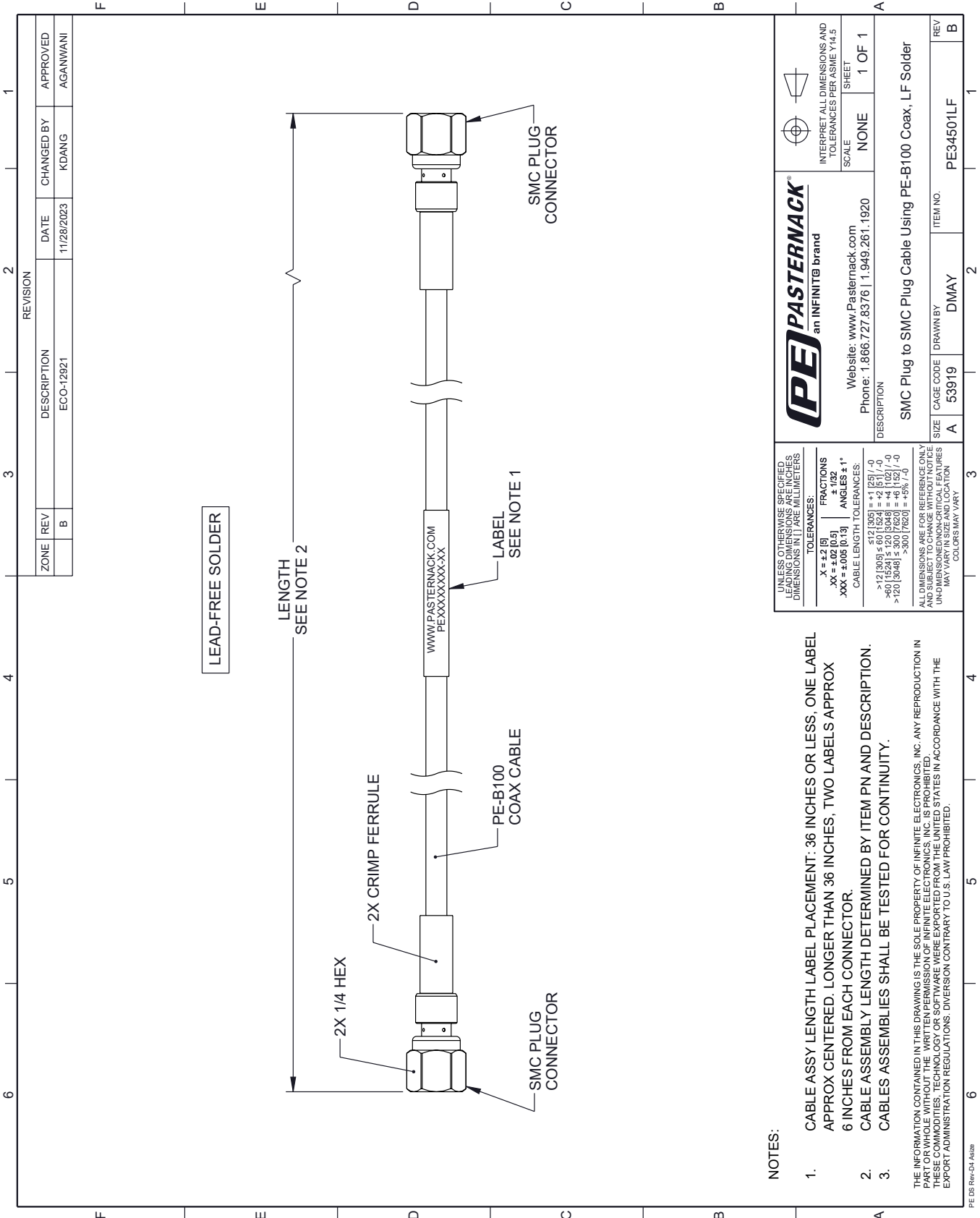
Click the following link (or enter part number in "SEARCH" on website) to obtain additional part information including price, inventory and certifications: [SMC Plug to SMC Plug Cable 12 Inch Length Using PE-B100 Coax PE34501LF-12](https://www.pasternack.com/smc-plug-smc-plug-pe-b100-cable-assembly-pe34501lf-12-p.aspx)

URL: <https://www.pasternack.com/smc-plug-smc-plug-pe-b100-cable-assembly-pe34501lf-12-p.aspx>

The information contained within this document is accurate to the best of our knowledge and representative of the part described herein. It may be necessary to make modifications to the part and/or the documentation of the part in order to implement improvements. Pasternack Enterprises reserves the right to make such changes as required. Unless otherwise stated, all specifications are nominal. Pasternack Enterprises does not make any representation or warranty regarding the suitability of the part described herein for any particular purpose, and Pasternack Enterprises does not assume liability arising out of the use of any part or document.

PE34501LF-12 CAD Drawing

SMC Plug to SMC Plug Cable 12 Inch Length Using PE-B100 Coax



| REVISION | | DATE | CHANGED BY | APPROVED |
|-------------|-----|------------|------------|----------|
| ZONE | REV | | | |
| | B | 11/28/2023 | KDANG | AGANWANI |
| DESCRIPTION | | | | |
| ECO-12921 | | | | |

LEAD-FREE SOLDER

LENGTH
SEE NOTE 2

WWW.PASTERNAK.COM
PEXXXXXXX-XX

LABEL
SEE NOTE 1

2X 1/4 HEX

2X CRIMP FERRULE

PE-B100
COAX CABLE

SMC PLUG
CONNECTOR

SMC PLUG
CONNECTOR

NOTES:

- CABLE ASSY LENGTH LABEL PLACEMENT: .36 INCHES OR LESS, ONE LABEL APPROX CENTERED. LONGER THAN .36 INCHES, TWO LABELS APPROX .6 INCHES FROM EACH CONNECTOR.
- CABLE ASSEMBLY LENGTH DETERMINED BY ITEM PN AND DESCRIPTION.
- CABLE ASSEMBLIES SHALL BE TESTED FOR CONTINUITY.

THE INFORMATION CONTAINED IN THIS DRAWING IS THE SOLE PROPERTY OF INFINITE ELECTRONICS, INC. ANY REPRODUCTION IN PART OR WHOLE WITHOUT THE WRITTEN PERMISSION OF INFINITE ELECTRONICS, INC. IS PROHIBITED. THESE COMMODITIES, TECHNOLOGY OR SOFTWARE WERE EXPORTED FROM THE UNITED STATES IN ACCORDANCE WITH THE EXPORT ADMINISTRATION REGULATIONS. DIVERSION CONTRARY TO U.S. LAW PROHIBITED.

UNLESS OTHERWISE SPECIFIED, LEADING DIMENSIONS ARE IN INCHES. DIMENSIONS IN [] ARE MILLIMETERS.

TOLERANCES:
 .X = ±.2 [5]
 .XX = ±.02 [0.5]
 .XXX = ±.005 [0.13]

FRACTIONS
 ± 1/32

ANGLES ± 1°

CABLE LENGTH TOLERANCES:
 <12 [305] ±.60 [15.24] = ±.2 [5.1] / -0
 >12 [305] ±.60 [15.24] = ±.2 [5.1] / -0
 >40 [1024] ±.12 [3.048] = ±.4 [10.27] / -0
 >120 [3048] ±.30 [7.62] = ±.9 [22.86] / -0

ALL DIMENSIONS ARE FOR REFERENCE ONLY. UNLESS OTHERWISE SPECIFIED, DIMENSIONS MAY VARY IN SIZE AND LOCATION. COLORS MAY VARY.

PE PASTERNAK
an INFINITE brand

Website: www.Pasternack.com
 Phone: 1.866.727.8376 | 1.949.261.1920

INTERPRET ALL DIMENSIONS AND TOLERANCES PER ASME Y14.5

SCALE NONE

SHEET 1 OF 1

DESCRIPTION
SMC Plug to SMC Plug Cable Using PE-B100 Coax, LF Solder

| | | | |
|------|-----------|----------|-----------|
| SIZE | CAGE CODE | DRAWN BY | ITEM NO. |
| A | 53919 | DMAY | PE34501LF |

PE DS Rev-D4-A326