

SMA Male to N Male Cable Using RG142 Coax with HeatShrink, LF Solder



PE3568LF/HS

Configuration

- Connector 1: SMA Male
- Connector 2: N Male
- Cable Type: RG142
- Coax Flex Type: Flexible

Features

- Max Frequency 8 GHz
- Shielding Effectivity > 90 dB
- 69.2% Phase Velocity
- Double Shielded
- FEP Jacket



Applications

- General Purpose
- Laboratory Use

Description

Pasternack's PE3568LF/HS SMA male to type N male cable using RG142 coax is part of our full line of RF components available for same-day shipping. Pasternack's flexible RF cable assemblies are ideal for applications where tight bends and flexure are required. This Pasternack SMA to type N cable assembly has a male to male gender configuration with 50 ohm flexible RG142 coax. The PE3568LF/HS SMA male to type N male cable assembly operates to 8 GHz. The double shielding of this Pasternack cable assembly provides excellent shielding effectiveness of better than 90 dB.

Custom versions of most RF cable assemblies can be built and shipped same day. Custom cable assembly lengths can be obtained by specifying the desired length on the web site at time of order or by contacting a sales representative. Other available RF cable assembly value added services include connector orientation or clocking, heat shrink booting and custom labeling. RF testing can also be performed to document the electrical performance of your cable assembly.

Electrical Specifications

Description	Minimum	Typical	Maximum	Units
Frequency Range	DC		8	GHz
VSWR			1.4:1	
Velocity of Propagation		69.2		%
RF Shielding	90			dB
Capacitance		29.4 [96.46]		pF/ft [pF/m]

Specifications by Frequency

SMA Male to N Male Cable Using RG142 Coax with HeatShrink, LF Solder



PE3568LF/HS

Part Number	Length	Description	F1	F2	F3	F4	F5	Units	Weight (lbs)			
			Frequency		500		1000			2000		4000
PE3568LF/HS	Custom Lengths Available	Insertion Loss (Typ.)	0.087	0.129	0.184	0.28	0.512	dB/ft				
			0.29	0.43	0.61	0.92	1.68	dB/m				
PE3568LF/HS-12	12 inch	Insertion Loss (Typ.)	0.29	0.33	0.39	0.48	0.72	dB	0.13			
PE3568LF/HS-24	24 inch	Insertion Loss (Typ.)	0.38	0.46	0.57	0.76	1.23	dB	0.172			
PE3568LF/HS-36	36 inch	Insertion Loss (Typ.)	0.47	0.59	0.76	1.04	1.74	dB	0.214			
PE3568LF/HS-48	48 inch	Insertion Loss (Typ.)	0.55	0.72	0.94	1.32	2.25	dB	0.256			
PE3568LF/HS-60	60 inch	Insertion Loss (Typ.)	0.64	0.85	1.12	1.6	2.76	dB	0.298			

The insertion loss data for the base model does not include loss due to the connectors. Each length includes insertion loss due to the connectors.

Loss due to Connector 1: 0.1 dB
 Loss due to Connector 2: 0.1 dB
 Base Weight: 0.13 pounds
 Additional Weight per Inch: 0.0035 pounds

Mechanical Specifications

Cable Assembly

Weight 0.13 lbs [58.97 g]

Cable

Cable Type RG142
 Impedance 50 Ohms
 Inner Conductor Type Solid
 Inner Conductor Material and Plating Copper Clad Steel, Silver
 Dielectric Type PTFE
 Number of Shields 2
 Shield Layer 1 Silver Plated Copper Braid
 Shield Layer 2 Silver Plated Copper Braid
 Jacket Material FEP, Tan
 Jacket Diameter 0.195 in [4.95 mm]
 One Time Minimum Bend Radius 0.984 in [24.99 mm]
 Repeated Minimum Bend Radius 2 in [50.8 mm]

SMA Male to N Male Cable Using RG142 Coax with HeatShrink, LF Solder



PE3568LF/HS

Connectors

Description	Connector 1	Connector 2
Type	SMA Male	N Male
Specification	MIL-STD-348A	MIL-STD-348
Impedance	50 Ohms	50 Ohms
Configuration	Straight	Straight
Contact Material and Plating	Brass, Gold	Brass, Silver
Contact Plating Specification	50 µin minimum	ASTM-B700
Dielectric Type	PTFE	PTFE
Body Material and Plating	Brass, Nickel	Brass, Nickel
Body Plating Specification	100 µin minimum	ASTM-B689
Coupling Nut Material and Plating	Brass, Nickel	Brass, Nickel
Coupling Nut Plating Specification	100 µin minimum	ASTM-B689
Hex Size	5/16 in	
Torque	5 in-lbs 0.57 Nm	

Environmental Specifications

Operating Range Temperature -55 to +165 deg C

Compliance Certifications (see [product page](#) for current document)

Plotted and Other Data

Notes:

SMA Male to N Male Cable Using RG142 Coax with HeatShrink, LF Solder

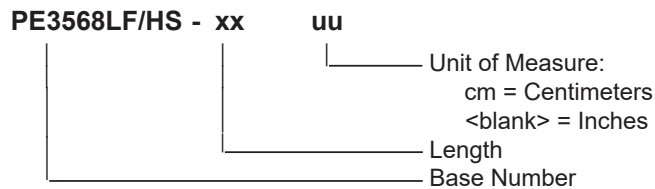


PE3568LF/HS

Typical Performance Data

How to Order

Part Number Configuration:



Example: PE3568LF/HS-12 = 12 inches long cable
PE3568LF/HS-100cm = 100 cm long cable

SMA Male to N Male Cable Using RG142 Coax with HeatShrink, LF Solder from Pasternack Enterprises has same day shipment for domestic and International orders. Our RF, microwave and millimeter wave products maintain a 99.4% availability and are part of the broadest selection in the industry.

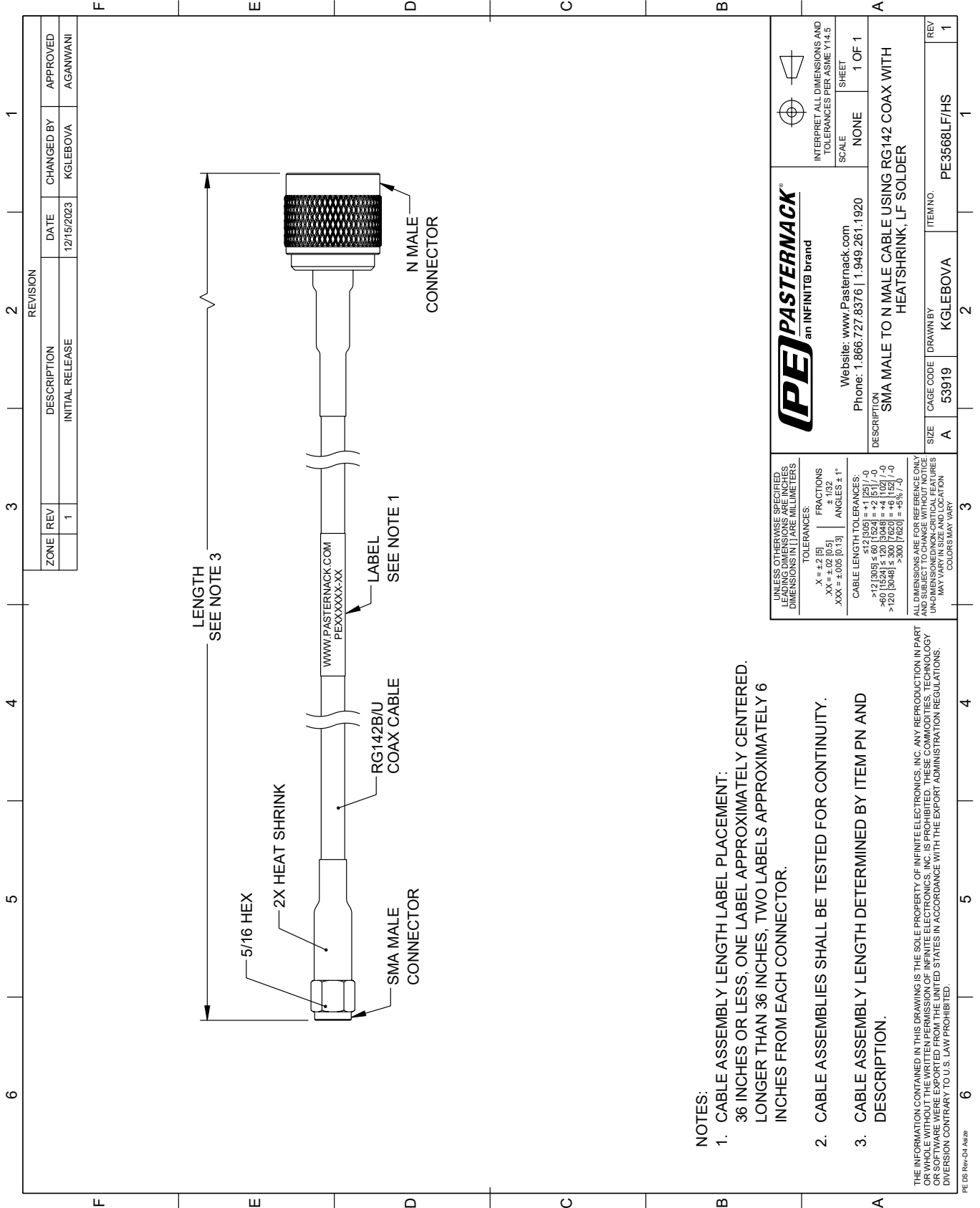
Click the following link (or enter part number in "SEARCH" on website) to obtain additional part information including price, inventory and certifications: [SMA Male to N Male Cable Using RG142 Coax with HeatShrink, LF Solder PE3568LF/HS](#)

URL: <https://www.pasternack.com/sma-male-to-n-male-cable-using-rg142-with-heatshrink-lf-solder-pe3568lf-hs-p.aspx>

The information contained within this document is accurate to the best of our knowledge and representative of the part described herein. It may be necessary to make modifications to the part and/or the documentation of the part in order to impliment improvements. Pasternack Enterprises reserves the right to make such changes as required. Unless otherwise stated, all specifications are nominal. Pasternack Enterprises does not make any representation or warranty regarding the suitability of the part described herein for any particular purpose, and Pasternack Enterprises does not assume liability arising out of the use of any part or document.

PE3568LF/HS CAD Drawing

SMA Male to N Male Cable Using RG142 Coax with HeatShrink, LF Solder



NOTES:

1. CABLE ASSEMBLY LENGTH LABEL PLACEMENT: 36 INCHES OR LESS, ONE LABEL APPROXIMATELY CENTERED. LONGER THAN 36 INCHES, TWO LABELS APPROXIMATELY 6 INCHES FROM EACH CONNECTOR.
2. CABLE ASSEMBLIES SHALL BE TESTED FOR CONTINUITY.
3. CABLE ASSEMBLY LENGTH DETERMINED BY ITEM PN AND DESCRIPTION.

THE INFORMATION CONTAINED IN THIS DRAWING IS THE SOLE PROPERTY OF INFINITE ELECTRONICS, INC. ANY REPRODUCTION IN PART OR WHOLE WITHOUT THE WRITTEN PERMISSION OF INFINITE ELECTRONICS, INC. IS PROHIBITED. THESE COMMODITIES, TECHNOLOGY OR SOFTWARE WERE EXPORTED FROM THE UNITED STATES IN ACCORDANCE WITH THE EXPORT ADMINISTRATION REGULATIONS. DIVERSION CONTRARY TO U.S. LAW PROHIBITED.

UNLESS OTHERWISE SPECIFIED, LEADING DIMENSIONS ARE IN INCHES. DIMENSIONS IN [] ARE MILLIMETERS

TOLERANCES:
 .X = +.2 [5] FRACTIONS ± 1/32
 .XX = ±.02 [0.5] ANGLES ± 1°
 .XXX = ±.005 [0.13]

CABLE LENGTH TOLERANCES:
 >12 [305] ≤ 60 [1524] = +2 [51] / -0
 >60 [1524] ≤ 120 [3048] = +4 [102] / -0
 >120 [3048] ≤ 300 [7620] = +5% / -0

ALL DIMENSIONS ARE FOR REFERENCE ONLY. UNLESS OTHERWISE SPECIFIED, DIMENSIONS MAY VARY IN SIZE AND LOCATION. COLORS MAY VARY.

PE PASTERNAK®
 an INFINITE brand

Website: www.Pasternack.com
 Phone: 1.866.727.8376 | 1.949.261.1920

INTERPRET ALL DIMENSIONS AND TOLERANCES PER ASME Y14.5

SCALE: NONE SHEET: 1 OF 1

DESCRIPTION: SMA MALE TO N MALE CABLE USING RG142 COAX WITH HEATSHRINK, LF SOLDER

SIZE	A	CAGE CODE	53919	DRAWN BY	KGLEBOVA	ITEM NO.	PE3568LF/HS
REV	1						