

75 Ohm SMB Plug Right Angle to 75 Ohm BNC Male Right Angle Cable Using 75 Ohm RG179 Coax



PE37141

Configuration

- Connector 1: SMB Plug Right Angle
- Connector 2: BNC Male Right Angle
- Cable Type: RG179
- Coax Flex Type: Flexible

Features

- Max Frequency 500 MHz
- 70% Phase Velocity
- FEP Jacket

Applications

- General Purpose
- Laboratory Use

Description

Pasternack's PE37141 75 ohm SMB plug right angle to 75 ohm BNC male right angle cable using 75 ohm RG179 coax is part of our full line of RF components available for same-day shipping. Pasternack's flexible RF cable assemblies are ideal for applications where tight bends and flexure are required. This Pasternack SMB to BNC cable assembly has a plug to male gender configuration with 75 ohm flexible RG179 coax. The PE37141 SMB plug to BNC male cable assembly operates to 500 MHz. The right angle SMB and right angle BNC interfaces on the RG179 cable allow for easier connections in tight spaces.

Custom versions of most RF cable assemblies can be built and shipped same day. Custom cable assembly lengths can be obtained by specifying the desired length on the web site at time of order or by contacting a sales representative. Other available RF cable assembly value added services include connector orientation or clocking, heat shrink booting and custom labeling. RF testing can also be performed to document the electrical performance of your cable assembly.

Electrical Specifications

Description	Minimum	Typical	Maximum	Units
Frequency Range	DC		500	MHz
VSWR			1.4:1	
Velocity of Propagation		70		%
Capacitance		19.4 [63.65]		pF/ft [pF/m]
Operating Voltage (AC)			335	Vrms

Specifications by Frequency

75 Ohm SMB Plug Right Angle to 75 Ohm BNC Male
Right Angle Cable Using 75 Ohm RG179 Coax



PE37141

Part Number	Length	Description	F1	F2	F3	F4	Units	Weight (lbs)
			Frequency	50	100	250	500	
PE37141	Custom Lengths Available	Insertion Loss (Typ.)	0.05	0.09	0.14	0.2	dB/ft	
			0.15	0.3	0.45	0.67	dB/m	
PE37141-12	12 inch	Insertion Loss (Typ.)	0.35	0.4	0.44	0.51	dB	0.092
PE37141-24	24 inch	Insertion Loss (Typ.)	0.4	0.49	0.58	0.71	dB	0.101
PE37141-36	36 inch	Insertion Loss (Typ.)	0.44	0.58	0.72	0.91	dB	0.11
PE37141-48	48 inch	Insertion Loss (Typ.)	0.49	0.67	0.85	1.12	dB	0.119
PE37141-72	72 inch	Insertion Loss (Typ.)	0.58	0.85	1.13	1.52	dB	0.137

The insertion loss data for the base model does not include loss due to the connectors. Each length includes insertion loss due to the connectors.

Loss due to Connector 1: 0.2 dB
 Loss due to Connector 2: 0.2 dB
 Base Weight: 0.092 pounds
 Additional Weight per Inch: 0.00075 pounds

Mechanical Specifications

Cable Assembly

Width/Diameter 0.5 in [12.7 mm]
 Weight 0.092 lbs [41.73 g]

Cable

Cable Type RG179
 Impedance 75 Ohms
 Inner Conductor Type Stranded
 Inner Conductor Material and Plating Copper Clad Steel, Silver
 Dielectric Type PTFE
 Number of Shields 1
 Shield Layer 1 Silver Plated Copper Braid
 Jacket Material FEP, Tan
 Jacket Diameter 0.1 in [2.54 mm]
 Repeated Minimum Bend Radius 0.4 in [10.16 mm]

75 Ohm SMB Plug Right Angle to 75 Ohm BNC Male Right Angle Cable Using 75 Ohm RG179 Coax



PE37141

Connectors

Description	Connector 1	Connector 2
Type	SMB Plug Right Angle	BNC Male Right Angle
Impedance	75 Ohms	75 Ohms
Configuration	Right Angle	Right Angle
Contact Material and Plating	Beryllium Copper, Gold	Brass, Gold
Contact Plating Specification	30 µin minimum	30 µin minimum
Dielectric Type	PTFE	PTFE
Body Material and Plating	Brass, Nickel	Brass, Nickel
Body Plating Specification	100 µin minimum	100 µin minimum
Coupling Nut Material and Plating		Brass, Nickel
Coupling Nut Plating Specification		100 µin minimum

Environmental Specifications

Operating Range Temperature -55 to +165 deg C

Compliance Certifications (see [product page](#) for current document)

Plotted and Other Data

Notes:

75 Ohm SMB Plug Right Angle to 75 Ohm BNC Male Right Angle Cable Using 75 Ohm RG179 Coax

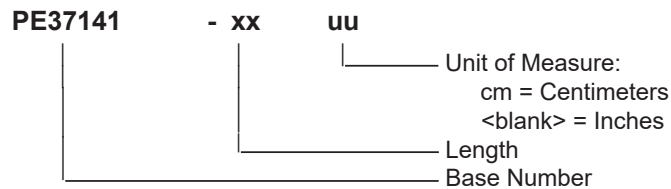


PE37141

Typical Performance Data

How to Order

Part Number Configuration:



Example: PE37141-12 = 12 inches long cable
PE37141-100cm = 100 cm long cable

75 Ohm SMB Plug Right Angle to 75 Ohm BNC Male Right Angle Cable Using 75 Ohm RG179 Coax from Pasternack Enterprises has same day shipment for domestic and International orders. Our RF, microwave and millimeter wave products maintain a 99.4% availability and are part of the broadest selection in the industry.

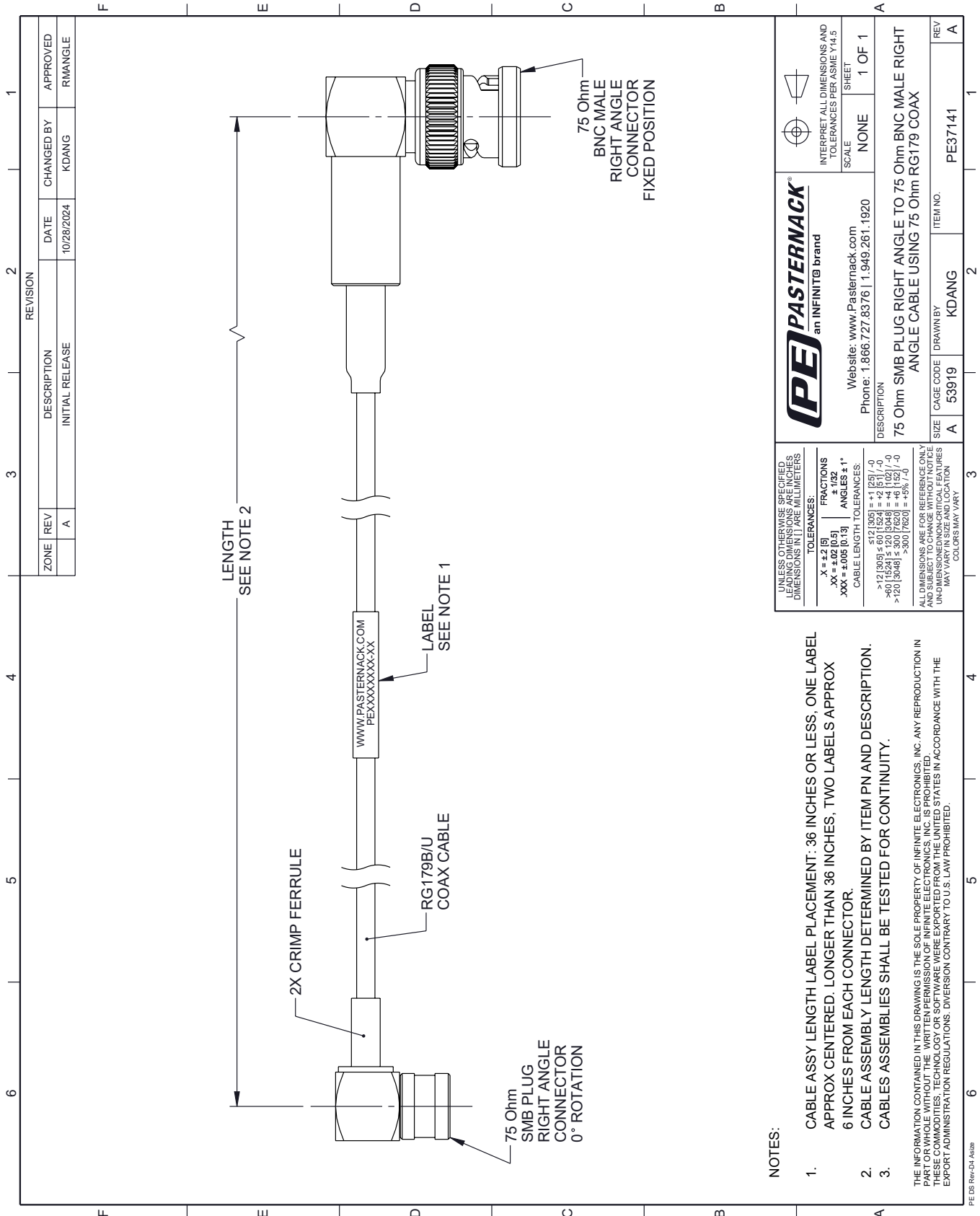
Click the following link (or enter part number in "SEARCH" on website) to obtain additional part information including price, inventory and certifications: [75 Ohm SMB Plug Right Angle to 75 Ohm BNC Male Right Angle Cable Using 75 Ohm RG179 Coax PE37141](#)

URL: <https://www.pasternack.com/75-ohm-smb-plug-right-angle-to-75-ohm-bnc-male-cable-using-rg179-pe37141-p.aspx>

The information contained within this document is accurate to the best of our knowledge and representative of the part described herein. It may be necessary to make modifications to the part and/or the documentation of the part in order to impliment improvements. Pasternack Enterprises reserves the right to make such changes as required. Unless otherwise stated, all specifications are nominal. Pasternack Enterprises does not make any representation or warranty regarding the suitability of the part described herein for any particular purpose, and Pasternack Enterprises does not assume liability arising out of the use of any part or document.

PE37141 CAD Drawing

75 Ohm SMB Plug Right Angle to 75 Ohm BNC Male Right Angle Cable Using 75 Ohm RG179 Coax



REVISION		DATE	CHANGED BY	APPROVED
ZONE	REV			
	A	10/28/2024	KDANG	RMANGLE
DESCRIPTION				
INITIAL RELEASE				

PE PASTERNAK
an INFINITB brand

Website: www.Pasternack.com
Phone: 1.866.727.8376 | 1.949.261.1920

DESCRIPTION: 75 Ohm SMB PLUG RIGHT ANGLE TO 75 Ohm BNC MALE RIGHT ANGLE CABLE USING 75 Ohm RG179 COAX

SCALE: NONE
SHEET: 1 OF 1

INTERPRET ALL DIMENSIONS AND TOLERANCES PER ASME Y14.5

SIZE	CAGE CODE	DRAWN BY	ITEM NO.	REV
A	53919	KDANG	PE37141	A

UNLESS OTHERWISE SPECIFIED, LEADING DIMENSIONS ARE IN INCHES. DIMENSIONS IN [] ARE MILLIMETERS.

TOLERANCES:
 .X = ±.2 [5]
 .XX = ±.02 [0.5]
 .XXX = ±.005 [0.13]

FRACTIONS ± 1/32
 ANGLES ± 1°

CABLE LENGTH TOLERANCES:
 <12 [305] ±.60 [1524] = +.2 [5] / -0
 >12 [305] ±.60 [1524] = +.2 [5] / -0
 >40 [1024] ±.120 [3048] = +.4 [1027] / -0
 >120 [3048] ±.300 [7620] = +.9 [229] / -0

ALL DIMENSIONS ARE FOR REFERENCE ONLY. UNLESS OTHERWISE SPECIFIED, ALL DIMENSIONS ARE NON-CRITICAL FEATURES. MAY VARY IN SIZE AND LOCATION. COLORS MAY VARY.

- NOTES:**
- CABLE ASSY LENGTH LABEL PLACEMENT: .36 INCHES OR LESS, ONE LABEL APPROX CENTERED. LONGER THAN .36 INCHES, TWO LABELS APPROX 6 INCHES FROM EACH CONNECTOR.
 - CABLE ASSEMBLY LENGTH DETERMINED BY ITEM PN AND DESCRIPTION. CABLE ASSEMBLIES SHALL BE TESTED FOR CONTINUITY.
 - THE INFORMATION CONTAINED IN THIS DRAWING IS THE SOLE PROPERTY OF INFINITE ELECTRONICS, INC. ANY REPRODUCTION IN PART OR WHOLE WITHOUT THE WRITTEN PERMISSION OF INFINITE ELECTRONICS, INC. IS PROHIBITED. THESE COMMODITIES, TECHNOLOGY OR SOFTWARE WERE EXPORTED FROM THE UNITED STATES IN ACCORDANCE WITH THE EXPORT ADMINISTRATION REGULATIONS. DIVERSION CONTRARY TO U.S. LAW PROHIBITED.