

## MHV Male Right Angle to MHV Male Right Angle Cable Using RG214 Coax



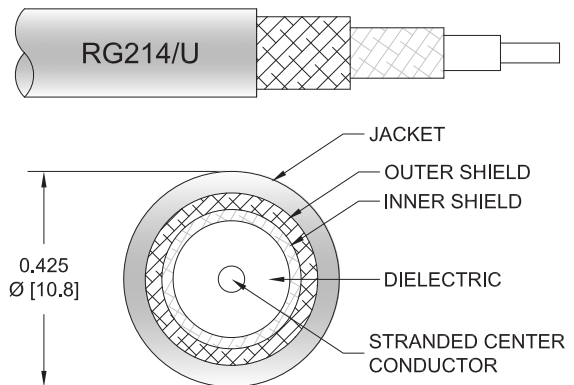
### PE37554

#### Configuration

- Connector 1: MHV Male Right Angle
- Connector 2: MHV Male Right Angle
- Cable Type: RG214
- Coax Flex Type: Flexible

#### Features

- 65.9% Phase Velocity
- Double Shielded
- PVC Jacket



#### Applications

- General Purpose
- Laboratory Use

#### Description

Pasternack's PE37554 MHV male right angle to MHV male right angle cable using RG214 coax is part of our full line of RF components available for same-day shipping. Pasternack's flexible RF cable assemblies are ideal for applications where tight bends and flexure are required. This Pasternack MHV to MHV cable assembly has a male to male gender configuration with 50 ohm flexible RG214 coax. The right angle MHV interfaces on the RG214 cable allow for easier connections in tight spaces. The double shielding of this Pasternack cable assembly provides excellent shielding effectiveness.

Custom versions of most RF cable assemblies can be built and shipped same day. Custom cable assembly lengths can be obtained by specifying the desired length on the web site at time of order or by contacting a sales representative. Other available RF cable assembly value added services include connector orientation or clocking, heat shrink booting and custom labeling. RF testing can also be performed to document the electrical performance of your cable assembly.

#### Electrical Specifications

Description	Minimum	Typical	Maximum	Units
Velocity of Propagation		65.9		%
Capacitance		30.8 [101.05]		pF/ft [pF/m]

#### Specifications by Frequency

## MHV Male Right Angle to MHV Male Right Angle Cable Using RG214 Coax



### PE37554

Part Number	Length	Description	F1	F2	F3	F4	Units	Weight (lbs)
		Frequency	50	100	250	300	MHz	
PE37554	Custom Lengths Available	Insertion Loss (Typ.)	0.013	0.021	0.03	0.033	dB/ft	
			0.05	0.07	0.1	0.11	dB/m	
PE37554-12	12 inch	Insertion Loss (Typ.)	0.22	0.23	0.23	0.24	dB	0.289
PE37554-36	36 inch	Insertion Loss (Typ.)	0.24	0.27	0.29	0.3	dB	0.546
PE37554-48	48 inch	Insertion Loss (Typ.)	0.26	0.29	0.32	0.34	dB	0.674
PE37554-72	72 inch	Insertion Loss (Typ.)	0.28	0.33	0.38	0.4	dB	0.93
PE37554-108	108 inch	Insertion Loss (Typ.)	0.32	0.39	0.47	0.5	dB	1.314

The insertion loss data for the base model does not include loss due to the connectors. Each length includes insertion loss due to the connectors.

Loss due to Connector 1:	0.1 dB
Loss due to Connector 2:	0.1 dB
Base Weight:	0.289 pounds
Additional Weight per Inch:	0.01067 pounds

## Mechanical Specifications

### Cable Assembly

Weight	0.412 lbs [186.88 g]
--------	----------------------

### Cable

Cable Type	RG214
Impedance	50 Ohms
Inner Conductor Type	Stranded
Inner Conductor Material and Plating	Copper, Silver
Dielectric Type	PE (LD)
Number of Shields	2
Shield Layer 1	Silver Plated Copper Braid
Shield Layer 2	Silver Plated Copper Braid
Jacket Material	PVC, Black
Jacket Diameter	0.425 in [10.8 mm]
One Time Minimum Bend Radius	1.57 in [39.88 mm]

## Connectors

Description	Connector 1	Connector 2
Type	MHV Male Right Angle	MHV Male Right Angle
Impedance	50 Ohms	50 Ohms
Configuration	Right Angle	Right Angle
Contact Material and Plating	Silver	Silver
Dielectric Type	PTFE	PTFE
Body Material and Plating	Brass, Nickel	Brass, Nickel
Coupling Nut Material and Plating	Brass, Nickel	Brass, Nickel

## MHV Male Right Angle to MHV Male Right Angle Cable Using RG214 Coax



**PE37554**

## Environmental Specifications

**Compliance Certifications** (see [product page](#) for current document)

## Plotted and Other Data

Notes:

Values at 25°C, sea level.

## Typical Performance Data

## How to Order

### Part Number Configuration:

**PE37554**

- XX

uu

- Unit of Measure:
  - cm = Centimeters
  - <blank> = Inches
- Length
- Base Number

Example: PE37554-12 = 12 inches long cable  
PE37554-100cm = 100 cm long cable

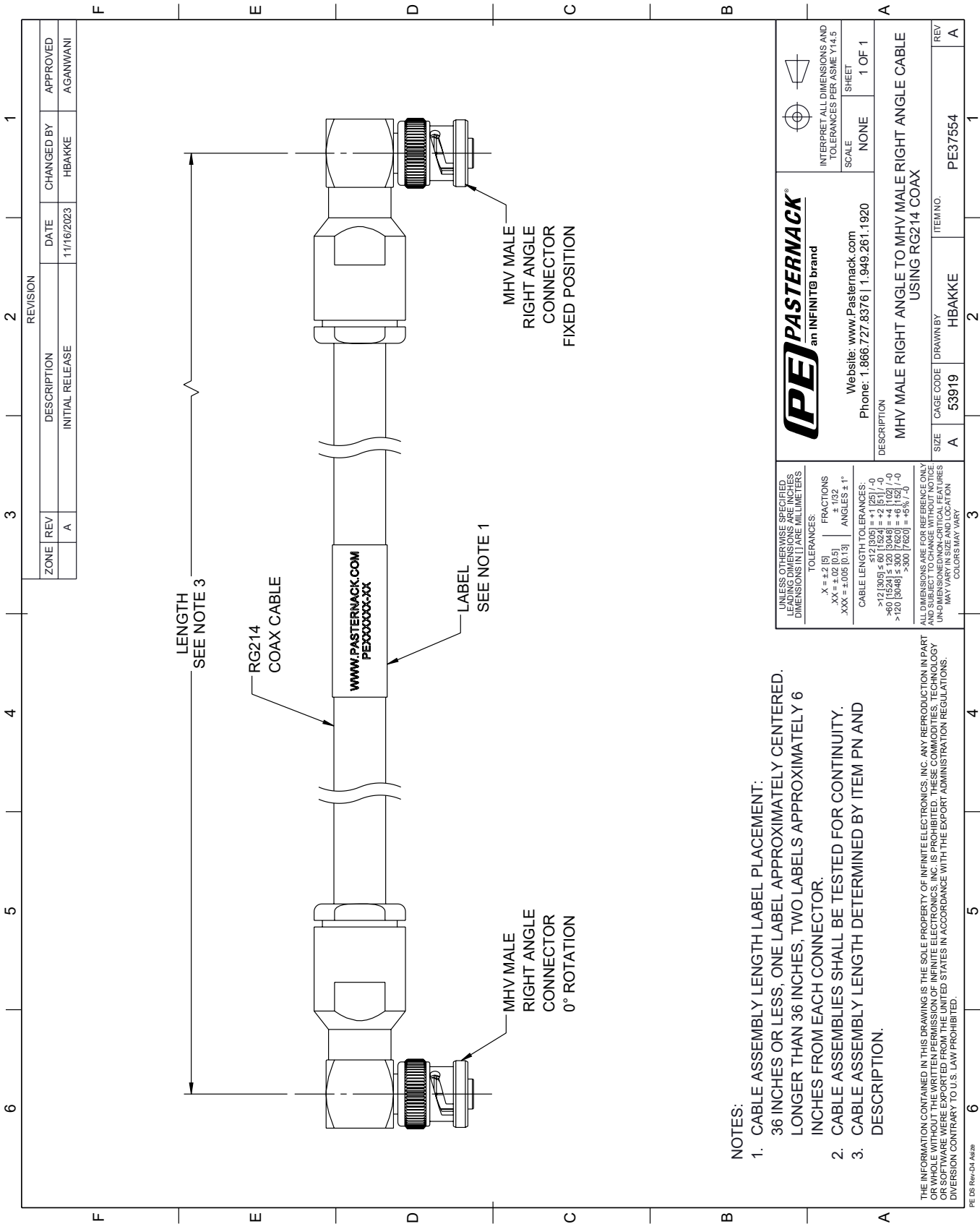
MHV Male Right Angle to MHV Male Right Angle Cable Using RG214 Coax from Pasternack Enterprises has same day shipment for domestic and International orders. Our RF, microwave and millimeter wave products maintain a 99.4% availability and are part of the broadest selection in the industry.

Click the following link (or enter part number in "SEARCH" on website) to obtain additional part information including price, inventory and certifications: [MHV Male Right Angle to MHV Male Right Angle Cable Using RG214 Coax PE37554](#)



URL: <https://www.pasternack.com/mhv-male-right-angle-to-mhv-male-cable-using-rg214-pe37554-p.aspx>

The information contained within this document is accurate to the best of our knowledge and representative of the part described herein. It may be necessary to make modifications to the part and/or the documentation of the part in order to implement improvements. Pasternack Enterprises reserves the right to make such changes as required. Unless otherwise stated, all specifications are nominal. Pasternack Enterprises does not make any representation or warranty regarding the suitability of the part described herein for any particular purpose, and Pasternack Enterprises does not assume liability arising out of the use of any part or document.

PE37554 CAD Drawing
MHV Male Right Angle to MHV Male Right Angle Cable Using RG214 Coax



- NOTES:
- 1. CABLE ASSEMBLY LENGTH LABEL PLACEMENT: 36 INCHES OR LESS, ONE LABEL APPROXIMATELY CENTERED. LONGER THAN 36 INCHES, TWO LABELS APPROXIMATELY 6 INCHES FROM EACH CONNECTOR.
  - 2. CABLE ASSEMBLIES SHALL BE TESTED FOR CONTINUITY.
  - 3. CABLE ASSEMBLY LENGTH DETERMINED BY ITEM PN AND DESCRIPTION.

UNLESS OTHERWISE SPECIFIED LEADING DIMENSIONS ARE IN INCHES TRAILING DIMENSIONS ARE IN MILLIMETERS		TOLERANCES:		FRACTIONS		ANGLES		PE PASTERNAK <sup>®</sup> an INFINITI <sup>®</sup> brand		INTERPRET ALL DIMENSIONS AND TOLERANCES PER ASME Y14.5		 	
.X = ±.2 [5]		.XX = ±.02 [0.5]		.XXX = ±.005 [0.13]		± 1/32		Website: <a href="http://www.Pasternack.com">www.Pasternack.com</a> Phone: 1.866.727.8376   1.949.281.1920		SCALE		SHEET	
CABLE LENGTH TOLERANCES:		CABLE LENGTH TOLERANCES:		CABLE LENGTH TOLERANCES:		CABLE LENGTH TOLERANCES:		DESCRIPTION		MHV MALE RIGHT ANGLE TO MHV MALE RIGHT ANGLE CABLE USING RG214 COAX		1 OF 1	
>12 [305] ≤ 60 [1524] = ±.12 [3.05]		>60 [1524] ≤ 120 [3048] = ±.12 [3.05]		>120 [3048] ≤ 300 [7620] = ±.12 [3.05]		>300 [7620] = ±.16 [4.06]		ALL DIMENSIONS ARE FOR REFERENCE ONLY AND SUBJECT TO CHANGE WITHOUT NOTICE UNLESS OTHERWISE SPECIFIED, DIMENSIONS MAY VARY IN SIZE AND LOCATION COLORS MAY VARY		REV		A	
SIZE		CAGE CODE		DRAWN BY		ITEM NO.		PE37554		REV		A	
A		53919		HBAKKE		PE37554		REV		A		A	