

N Male to N Male Low Loss Cable 36 Inch Length Using PE-C240 Coax



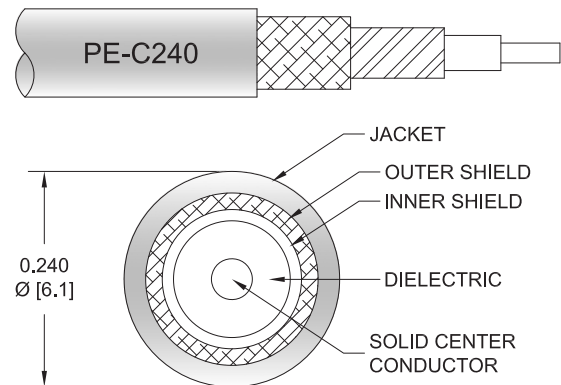
PE37941-36

Configuration

- Connector 1: N Male
- Connector 2: N Male
- Cable Type: PE-C240
- Coax Flex Type: Flexible

Features

- Max Frequency 5.8 GHz
- Shielding Effectivity > 90 dB
- 84% Phase Velocity
- Double Shielded
- PE Jacket



Applications

- General Purpose
- Laboratory Use

Description

Pasternack's PE37941-36 type N male to type N male 36 inch cable using PE-C240 coax is part of our full line of RF components available for same-day shipping. Pasternack's flexible RF cable assemblies are ideal for applications where tight bends and flexure are required. This Pasternack type N to type N cable assembly has a male to male gender configuration with 50 ohm flexible PE-C240 coax. The PE37941-36 type N male to type N male cable assembly operates to 5.8 GHz. The double shielding of this Pasternack cable assembly provides excellent shielding effectiveness of better than 90 dB.

Custom versions of most RF cable assemblies can be built and shipped same day. Custom cable assembly lengths can be obtained by specifying the desired length on the web site at time of order or by contacting a sales representative. Other available RF cable assembly value added services include connector orientation or clocking, heat shrink booting and custom labeling. RF testing can also be performed to document the electrical performance of your cable assembly.

Electrical Specifications

Description	Minimum	Typical	Maximum	Units
Frequency Range	DC		5.8	GHz
VSWR			1.4:1	
Velocity of Propagation		84		%
RF Shielding	90			dB
Capacitance		24.2 [79.4]		pF/ft [pF/m]

Specifications by Frequency

N Male to N Male Low Loss Cable 36 Inch Length Using PE-C240 Coax



PE37941-36

Part Number	Length	Description	F1	F2	F3	F4	F5	Units	Weight (lbs)
			Frequency		250	500	1000	2500	
PE37941	Custom Lengths Available	Insertion Loss (Typ.)	0.042	0.062	0.089	0.145	0.23	dB/ft	
			0.14	0.21	0.3	0.48	0.76	dB/m	
PE37941-36	36 inch	Insertion Loss (Typ.)	0.33	0.39	0.47	0.64	0.89	dB	0.33
PE37941-48	48 inch	Insertion Loss (Typ.)	0.37	0.45	0.56	0.78	1.12	dB	0.36
PE37941-60	60 inch	Insertion Loss (Typ.)	0.41	0.51	0.65	0.93	1.35	dB	0.4
PE37941-72	72 inch	Insertion Loss (Typ.)	0.46	0.58	0.74	1.07	1.58	dB	0.44
PE37941-120	120 inch	Insertion Loss (Typ.)	0.62	0.82	1.09	1.65	2.5	dB	0.57

The insertion loss data for the base model does not include loss due to the connectors. Each length includes insertion loss due to the connectors.

Loss due to Connector 1: 0.1 dB
 Loss due to Connector 2: 0.1 dB
 Base Weight: 0.0152 pounds
 Additional Weight per Inch: 0.00259 pounds

Mechanical Specifications

Cable Assembly

Width/Diameter 0.83 in [21.08 mm]
 Weight 0.33 lbs [149.69 g]

Cable

Cable Type PE-C240
 Impedance 50 Ohms
 Inner Conductor Type Solid
 Inner Conductor Material and Plating Copper
 Dielectric Type PE (F)
 Number of Shields 2
 Shield Layer 1 Aluminum Tape
 Shield Layer 2 Tinned Copper Braid
 Jacket Material PE, Black
 Jacket Diameter 0.24 in [6.1 mm]
 One Time Minimum Bend Radius 0.752 in [19.1 mm]
 Repeated Minimum Bend Radius 2.5 in [63.5 mm]

N Male to N Male Low Loss Cable 36 Inch Length Using PE-C240 Coax



PE37941-36

Connectors

Description	Connector 1	Connector 2
Type	N Male	N Male
Specification	MIL-STD-348A	MIL-STD-348A
Impedance	50 Ohms	50 Ohms
Configuration	Straight	Straight
Contact Material and Plating	Brass, Gold	Brass, Gold
Dielectric Type	Teflon	Teflon
Body Material and Plating	Brass, Tri-Metal	Brass, Tri-Metal
Coupling Nut Material and Plating	Brass, Tri-Metal	Brass, Tri-Metal
Hex Size	18 mm	18 mm
Torque	9 in-lbs 1.02 Nm	9 in-lbs 1.02 Nm

Environmental Specifications

Compliance Certifications (see [product page](#) for current document)

Plotted and Other Data

Notes:
Values at 25°C, sea level.

N Male to N Male Low Loss Cable 36 Inch Length Using PE-C240 Coax

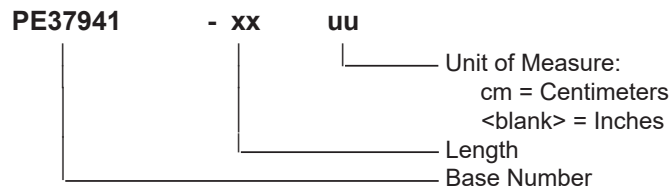


PE37941-36

Typical Performance Data

How to Order

Part Number Configuration:



Example: PE37941-12 = 12 inches long cable
PE37941-100cm = 100 cm long cable

N Male to N Male Low Loss Cable 36 Inch Length Using PE-C240 Coax from Pasternack Enterprises has same day shipment for domestic and International orders. Our RF, microwave and millimeter wave products maintain a 99.4% availability and are part of the broadest selection in the industry.

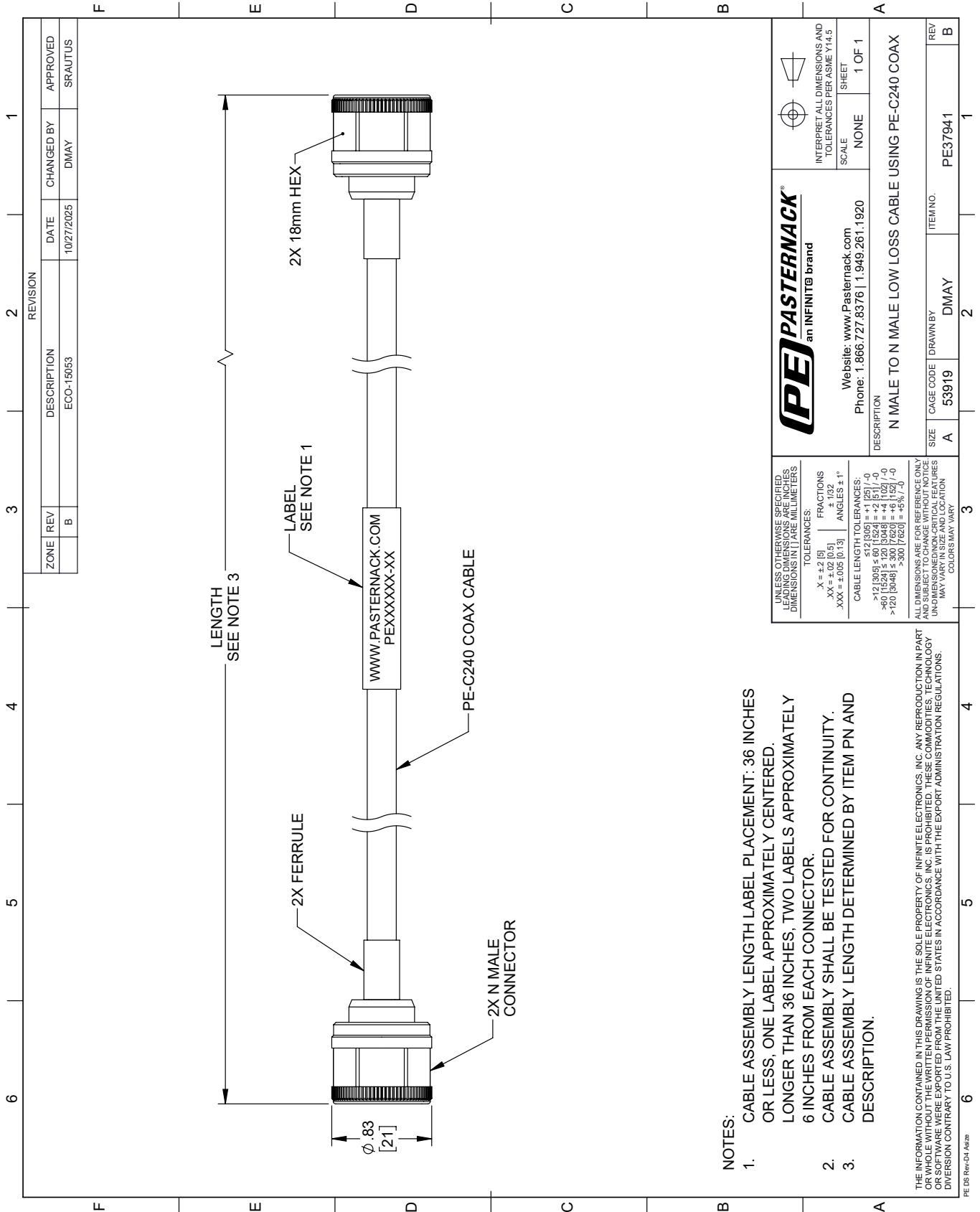
Click the following link (or enter part number in "SEARCH" on website) to obtain additional part information including price, inventory and certifications: [N Male to N Male Low Loss Cable 36 Inch Length Using PE-C240 Coax PE37941-36](#)

URL: <https://www.pasternack.com/n-male-to-n-male-low-loss-cable-36-inch-length-using-pe-c240-pe37941-36-p.aspx>

The information contained within this document is accurate to the best of our knowledge and representative of the part described herein. It may be necessary to make modifications to the part and/or the documentation of the part in order to implement improvements. Pasternack Enterprises reserves the right to make such changes as required. Unless otherwise stated, all specifications are nominal. Pasternack Enterprises does not make any representation or warranty regarding the suitability of the part described herein for any particular purpose, and Pasternack Enterprises does not assume liability arising out of the use of any part or document.

PE37941-36 CAD Drawing

N Male to N Male Low Loss Cable 36 Inch Length Using PE-C240 Coax



REVISION		DATE	CHANGED BY	APPROVED	
ZONE	REV	DESCRIPTION	ECO-15053	DMAY	SRAUTUS
	B				

(PE) PASTERNAK®
an INFINITE® brand

Website: www.Pasternack.com
Phone: 1.866.727.8376 | 1.949.261.1920

INTERPRET ALL DIMENSIONS AND TOLERANCES PER ASME Y14.5

SCALE: NONE
SHEET: 1 OF 1

DESCRIPTION: N MALE TO N MALE LOW LOSS CABLE USING PE-C240 COAX

SIZE	A	CAGE CODE	DMAY	ITEM NO.	PE37941
REV	B				

UNLESS OTHERWISE SPECIFIED, DIMENSIONS ARE IN INCHES. DIMENSIONS IN PARENTHESES ARE IN MILLIMETERS.

TOLERANCES:
 .X = ±.2 [5]
 .XX = ±.02 [0.5]
 .XXX = ±.005 [0.13]

FRACTIONS: ± 1/32
 ANGLES: ± 1°

CABLE LENGTH TOLERANCES:
 <12 [305] ≤ 60 [1524] = ±.1 [25] / -0
 >60 [1524] ≤ 120 [3048] = ±.4 [102] / -0
 >120 [3048] ≤ 300 [7620] = ±.1 [25] / -0
 >300 [7620] = ±.5 [12.7]

ALL DIMENSIONS ARE FOR REFERENCE ONLY. DIMENSIONS OF INDIVIDUAL COMPONENTS MAY VARY IN SIZE AND LOCATION. COLORS MAY VARY.

- NOTES:
- CABLE ASSEMBLY LENGTH LABEL PLACEMENT: 36 INCHES OR LESS, ONE LABEL APPROXIMATELY CENTERED, LONGER THAN 36 INCHES, TWO LABELS APPROXIMATELY 6 INCHES FROM EACH CONNECTOR.
 - CABLE ASSEMBLY SHALL BE TESTED FOR CONTINUITY.
 - CABLE ASSEMBLY LENGTH DETERMINED BY ITEM PN AND DESCRIPTION.

THE INFORMATION CONTAINED IN THIS DRAWING IS THE SOLE PROPERTY OF INFINITE ELECTRONICS, INC. ANY REPRODUCTION IN PART OR WHOLE WITHOUT THE WRITTEN PERMISSION OF INFINITE ELECTRONICS, INC. IS PROHIBITED. THESE COMMODITIES, TECHNOLOGY OR SOFTWARE WERE EXPORTED FROM THE UNITED STATES IN ACCORDANCE WITH THE EXPORT ADMINISTRATION REGULATIONS. DIVISION CONTRARY TO U.S. LAW PROHIBITED.

PE DS Rev-04 Add2