

N Male Right Angle to N Male Right Angle Cable Using RG223 Coax with HeatShrink, LF Solder



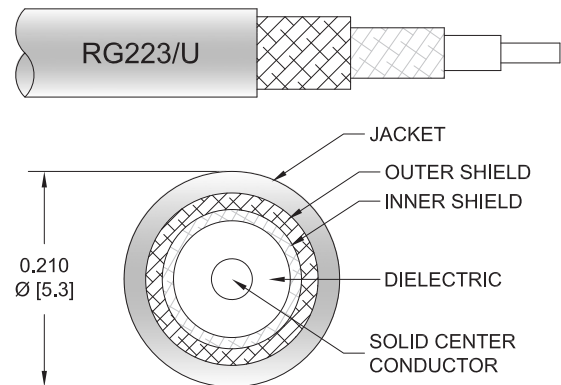
PE3882LF/HS

Configuration

- Connector 1: N Male Right Angle
- Connector 2: N Male Right Angle
- Cable Type: RG223
- Coax Flex Type: Flexible

Features

- Max Frequency 1 GHz
- 66% Phase Velocity
- Double Shielded
- PVC Jacket
- 500 Mating Cycles



Applications

- General Purpose
- Laboratory Use

Description

Pasternack's PE3882LF/HS type N male right angle to type N male right angle cable using RG223 coax is part of our full line of RF components available for same-day shipping. Pasternack's flexible RF cable assemblies are ideal for applications where tight bends and flexure are required. This Pasternack type N to type N cable assembly has a male to male gender configuration with 50 ohm flexible RG223 coax. The PE3882LF/HS type N male to type N male cable assembly operates to 1 GHz. The right angle type N interfaces on the RG223 cable allow for easier connections in tight spaces. The double shielding of this Pasternack cable assembly provides excellent shielding effectiveness.

Custom versions of most RF cable assemblies can be built and shipped same day. Custom cable assembly lengths can be obtained by specifying the desired length on the web site at time of order or by contacting a sales representative. Other available RF cable assembly value added services include connector orientation or clocking, heat shrink booting and custom labeling. RF testing can also be performed to document the electrical performance of your cable assembly.

Electrical Specifications

Description	Minimum	Typical	Maximum	Units
Frequency Range	DC		1,000	MHz
VSWR			1.4:1	
Velocity of Propagation		66		%
Capacitance		30.8 [101.05]		pF/ft [pF/m]
Operating Voltage (AC)			1,500	Vrms

Specifications by Frequency

N Male Right Angle to N Male Right Angle Cable
Using RG223 Coax with HeatShrink, LF Solder



PE3882LF/HS

Part Number	Length	Description	F1	F2	Units	Weight (lbs)
			500	1000	MHz	
PE3882LF/HS	Custom Lengths Available	Insertion Loss (Typ.)	0.09	0.13	dB/ft	
			0.3	0.43	dB/m	
PE3882LF/HS-12	12 inch	Insertion Loss (Typ.)	0.49	0.53	dB	0.285
PE3882LF/HS-24	24 inch	Insertion Loss (Typ.)	0.58	0.66	dB	0.317
PE3882LF/HS-36	36 inch	Insertion Loss (Typ.)	0.67	0.79	dB	0.348
PE3882LF/HS-60	60 inch	Insertion Loss (Typ.)	0.85	1.05	dB	0.41
PE3882LF/HS-72	72 inch	Insertion Loss (Typ.)	0.94	1.18	dB	0.441

The insertion loss data for the base model does not include loss due to the connectors. Each length includes insertion loss due to the connectors.

Loss due to Connector 1: 0.2 dB
 Loss due to Connector 2: 0.2 dB
 Base Weight: 0.285 pounds
 Additional Weight per Inch: 0.00259 pounds

Mechanical Specifications

Cable Assembly

Weight 0.285 lbs [129.27 g]

Cable

Cable Type RG223
 Impedance 50 Ohms
 Inner Conductor Type Solid
 Inner Conductor Material and Plating Copper, Silver
 Dielectric Type PE
 Number of Shields 2
 Shield Layer 1 Silver Plated Copper Braid
 Shield Layer 2 Silver Plated Copper Braid
 Jacket Material PVC, Black
 Jacket Diameter 0.209 in [5.31 mm]
 Repeated Minimum Bend Radius 1 in [25.4 mm]

N Male Right Angle to N Male Right Angle Cable
Using RG223 Coax with HeatShrink, LF Solder



PE3882LF/HS

Connectors

Description	Connector 1	Connector 2
Type	N Male Right Angle	N Male Right Angle
Specification	MIL-STD-348A	MIL-STD-348A
Impedance	50 Ohms	50 Ohms
Configuration	Right Angle	Right Angle
Mating Cycles	500	500
Contact Material and Plating	Brass, Gold	Brass, Gold
Contact Plating Specification	30 µin minimum	30 µin minimum
Dielectric Type	PTFE	PTFE
Body Material and Plating	Brass, Nickel	Brass, Nickel
Body Plating Specification	100 µin minimum	100 µin minimum
Coupling Nut Material and Plating	Brass, Nickel	Brass, Nickel

Environmental Specifications

Operating Range Temperature -40 to +80 deg C

Compliance Certifications (see [product page](#) for current document)

Plotted and Other Data

Notes:

N Male Right Angle to N Male Right Angle Cable Using RG223 Coax with HeatShrink, LF Solder

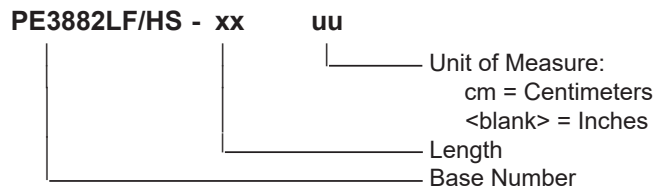


PE3882LF/HS

Typical Performance Data

How to Order

Part Number Configuration:



Example: PE3882LF/HS-12 = 12 inches long cable
PE3882LF/HS-100cm = 100 cm long cable

N Male Right Angle to N Male Right Angle Cable Using RG223 Coax with HeatShrink, LF Solder from Pasternack Enterprises has same day shipment for domestic and International orders. Our RF, microwave and millimeter wave products maintain a 99.4% availability and are part of the broadest selection in the industry.

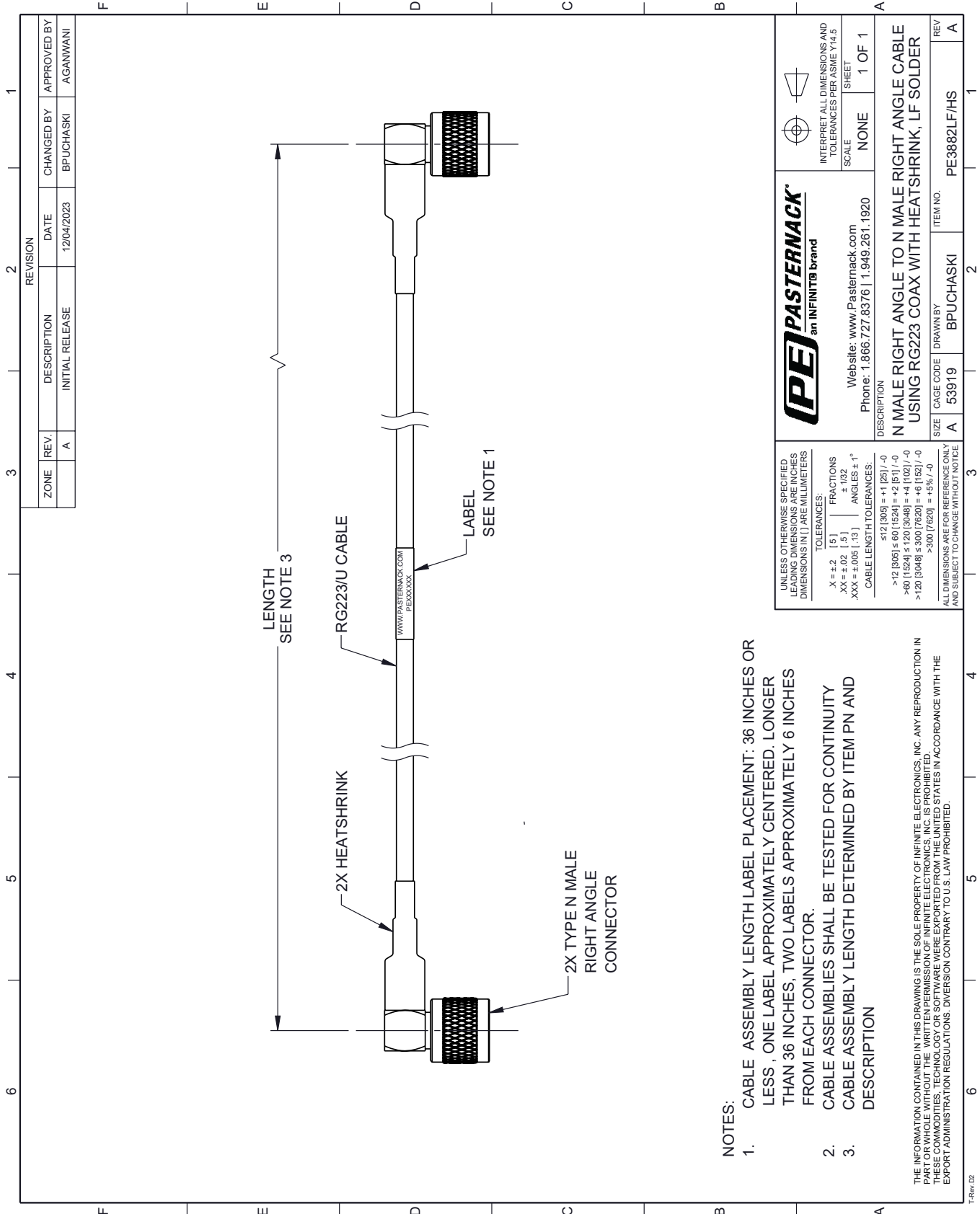
Click the following link (or enter part number in "SEARCH" on website) to obtain additional part information including price, inventory and certifications: [N Male Right Angle to N Male Right Angle Cable Using RG223 Coax with HeatShrink, LF Solder PE3882LF/HS](#)

URL: <https://www.pasternack.com/n-male-right-angle-to-n-male-cable-using-rg223-with-heatshrink-lf-solder-pe3882lf-hs-p.aspx>

The information contained within this document is accurate to the best of our knowledge and representative of the part described herein. It may be necessary to make modifications to the part and/or the documentation of the part in order to implement improvements. Pasternack Enterprises reserves the right to make such changes as required. Unless otherwise stated, all specifications are nominal. Pasternack Enterprises does not make any representation or warranty regarding the suitability of the part described herein for any particular purpose, and Pasternack Enterprises does not assume liability arising out of the use of any part or document.

PE3882LF/HS CAD Drawing

N Male Right Angle to N Male Right Angle Cable Using RG223 Coax with HeatShrink, LF Solder



NOTES:

1. CABLE ASSEMBLY LENGTH LABEL PLACEMENT: 36 INCHES OR LESS , ONE LABEL APPROXIMATELY CENTERED. LONGER THAN 36 INCHES, TWO LABELS APPROXIMATELY 6 INCHES FROM EACH CONNECTOR.
2. CABLE ASSEMBLIES SHALL BE TESTED FOR CONTINUITY
3. CABLE ASSEMBLY LENGTH DETERMINED BY ITEM PN AND DESCRIPTION

THE INFORMATION CONTAINED IN THIS DRAWING IS THE SOLE PROPERTY OF INFINITE ELECTRONICS, INC. ANY REPRODUCTION IN PART OR WHOLE WITHOUT THE WRITTEN PERMISSION OF INFINITE ELECTRONICS, INC. IS PROHIBITED. THESE COMMODITIES, TECHNOLOGY OR SOFTWARE WERE EXPORTED FROM THE UNITED STATES IN ACCORDANCE WITH THE EXPORT ADMINISTRATION REGULATIONS. DIVERSION CONTRARY TO U.S. LAW PROHIBITED.

UNLESS OTHERWISE SPECIFIED LEADING DIMENSIONS ARE INCHES DIMENSIONS IN [] ARE MILLIMETERS	
X = ±.2 [.5]	FRACTIONS ± 1/32
XX = ±.02 [.5]	ANGLES ± 1°
XXX = ±.005 [.13]	
CABLE LENGTH TOLERANCES:	
<12 [305]	±.1 [25]
>12 [305] <60 [1524]	±.2 [51]
>60 [1524] <120 [3048]	±.4 [103]
>120 [3048] <300 [7620]	±.6 [153]
>300 [7620]	±.9 [23]
ALL DIMENSIONS ARE FOR REFERENCE ONLY AND SUBJECT TO CHANGE WITHOUT NOTICE	

PE PASTERNAK
an INFINITE brand

Website: www.Pasternack.com
Phone: 1.866.727.8376 | 1.949.261.1920

INTERPRET ALL DIMENSIONS AND TOLERANCES PER ASME Y14.5

SCALE NONE

SHEET 1 OF 1

DESCRIPTION		ITEM NO.	
N MALE RIGHT ANGLE TO N MALE RIGHT ANGLE CABLE USING RG223 COAX WITH HEATSHRINK, LF SOLDER		PE3882LF/HS	
SIZE	CAGE CODE	DRAWN BY	REV
A	53919	BPUCHASKI	A