

## SMA Male to Mini SMP Female Cable Using PE-SR405FLJ Coax



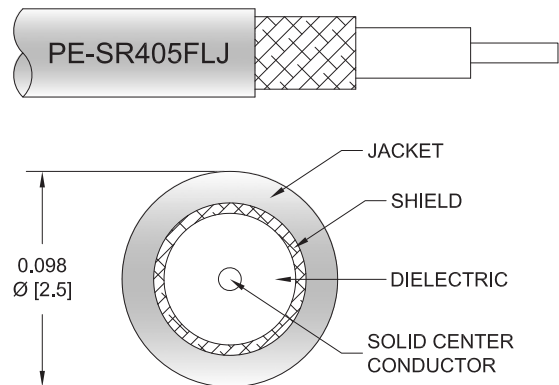
### PE3C0410

#### Configuration

- Connector 1: SMA Male
- Connector 2: Mini SMP Female
- Cable Type: PE-SR405FLJ
- Coax Flex Type: Formable

#### Features

- Max Frequency 18 GHz
- Shielding Effectivity > 100 dB
- 69.5% Phase Velocity
- FEP Jacket



#### Applications

- General Purpose
- Laboratory Use

#### Description

Pasternack's PE3C0410 SMA male to Mini SMP female cable using PE-SR405FLJ coax is part of our full line of RF components available for same-day shipping. Pasternack's formable RF cable assemblies provide an alternative to costly pre-formed semi-rigid assemblies since they are hand formable. This Pasternack SMA to Mini SMP cable assembly has a male to female gender configuration with 50 ohm formable PE-SR405FLJ coax. The PE3C0410 SMA male to Mini SMP female cable assembly operates to 18 GHz.

Custom versions of most RF cable assemblies can be built and shipped same day. Custom cable assembly lengths can be obtained by specifying the desired length on the web site at time of order or by contacting a sales representative. Other available RF cable assembly value added services include connector orientation or clocking, heat shrink booting and custom labeling. RF testing can also be performed to document the electrical performance of your cable assembly.

#### Electrical Specifications

Description	Minimum	Typical	Maximum	Units
Frequency Range	DC		18	GHz
VSWR			1.4:1	
Velocity of Propagation		69.5		%
RF Shielding	100			dB
Group Delay		1.43 [4.69]		ns/ft [ns/m]
Capacitance		29 [95.14]		pF/ft [pF/m]
DC Resistance Inner Conductor		65.7 [215.55]		Ohms/1000ft [Ohms/Km]
DC Resistance Outer Conductor		10.2 [33.46]		Ohms/1000ft [Ohms/Km]
Operating Voltage (AC)			325	Vrms

#### Specifications by Frequency

SMA Male to Mini SMP Female Cable  
Using PE-SR405FLJ Coax



**PE3C0410**

Part Number	Length	Description	F1	F2	F3	F4	F5	Units	Weight (lbs)
			Frequency		1000	2000	4500	9000	
PE3C0410	Custom Lengths Available	Insertion Loss (Typ.)	0.23	0.31	0.508	0.759	1.12	dB/ft	
			0.74	1.01	1.67	2.5	3.68	dB/m	
PE3C0410-6	6 inch	Insertion Loss (Typ.)	0.32	0.36	0.46	0.58	0.76	dB	0.022
PE3C0410-9	9 inch	Insertion Loss (Typ.)	0.37	0.43	0.59	0.77	1.04	dB	0.026
PE3C0410-12	12 inch	Insertion Loss (Typ.)	0.43	0.51	0.71	0.96	1.32	dB	0.029
PE3C0410-18	18 inch	Insertion Loss (Typ.)	0.54	0.66	0.97	1.34	1.88	dB	0.037
PE3C0410-24	24 inch	Insertion Loss (Typ.)	0.65	0.82	1.22	1.72	2.44	dB	0.044

The insertion loss data for the base model does not include loss due to the connectors. Each length includes insertion loss due to the connectors.

Loss due to Connector 1: 0.1 dB  
 Loss due to Connector 2: 0.1 dB  
 Base Weight: 0.029 pounds  
 Additional Weight per Inch: 0.00117 pounds

**Mechanical Specifications**

**Cable Assembly**

Width/Diameter: 0.5 in [12.7 mm]  
 Weight: 0.029 lbs [13.15 g]

**Cable**

Cable Type: PE-SR405FLJ  
 Impedance: 50 Ohms  
 Inner Conductor Type: Solid  
 Inner Conductor Material and Plating: Copper Clad Steel, Silver  
 Dielectric Type: PTFE  
 Number of Shields: 1  
 Outer Conductor 1 Material and Plating: Tinned Copper Composite Braid  
 Jacket Material: FEP, Black  
 Jacket Diameter: 0.105 in [2.67 mm]  
 One Time Minimum Bend Radius: 0.5 in [12.7 mm]  
 Repeated Minimum Bend Radius: 0.787 in [19.99 mm]

SMA Male to Mini SMP Female Cable  
Using PE-SR405FLJ Coax



**PE3C0410**

**Connectors**

Description	Connector 1	Connector 2
Type	SMA Male	Mini SMP Female
Specification	MIL-STD-348A	MIL-STD-348A
Impedance	50 Ohms	50 Ohms
Configuration	Straight	Straight
Mating Cycles	500	
Contact Material and Plating	Brass, Gold	Beryllium Copper, Gold
Contact Plating Specification	50 µin minimum	
Dielectric Type	PTFE	PTFE
Body Material and Plating	Stainless Steel, Gold	Beryllium Copper, Gold
Body Plating Specification	10 µin minimum	
Coupling Nut Material and Plating	Brass, Nickel	
Coupling Nut Plating Specification	100 µin minimum	

**Environmental Specifications**

Operating Range Temperature -55 to +125 deg C

**Compliance Certifications** (see [product page](#) for current document)

**Plotted and Other Data**

Notes:

## SMA Male to Mini SMP Female Cable Using PE-SR405FLJ Coax



### PE3C0410

#### Typical Performance Data

#### How to Order

Part Number Configuration:

**PE3C0410**

**- xx**

**uu**

Unit of Measure:  
cm = Centimeters  
<blank> = Inches

Length

Base Number

Example: PE3C0410-12 = 12 inches long cable  
PE3C0410-100cm = 100 cm long cable

SMA Male to Mini SMP Female Cable Using PE-SR405FLJ Coax from Pasternack Enterprises has same day shipment for domestic and International orders. Our RF, microwave and millimeter wave products maintain a 99.4% availability and are part of the broadest selection in the industry.

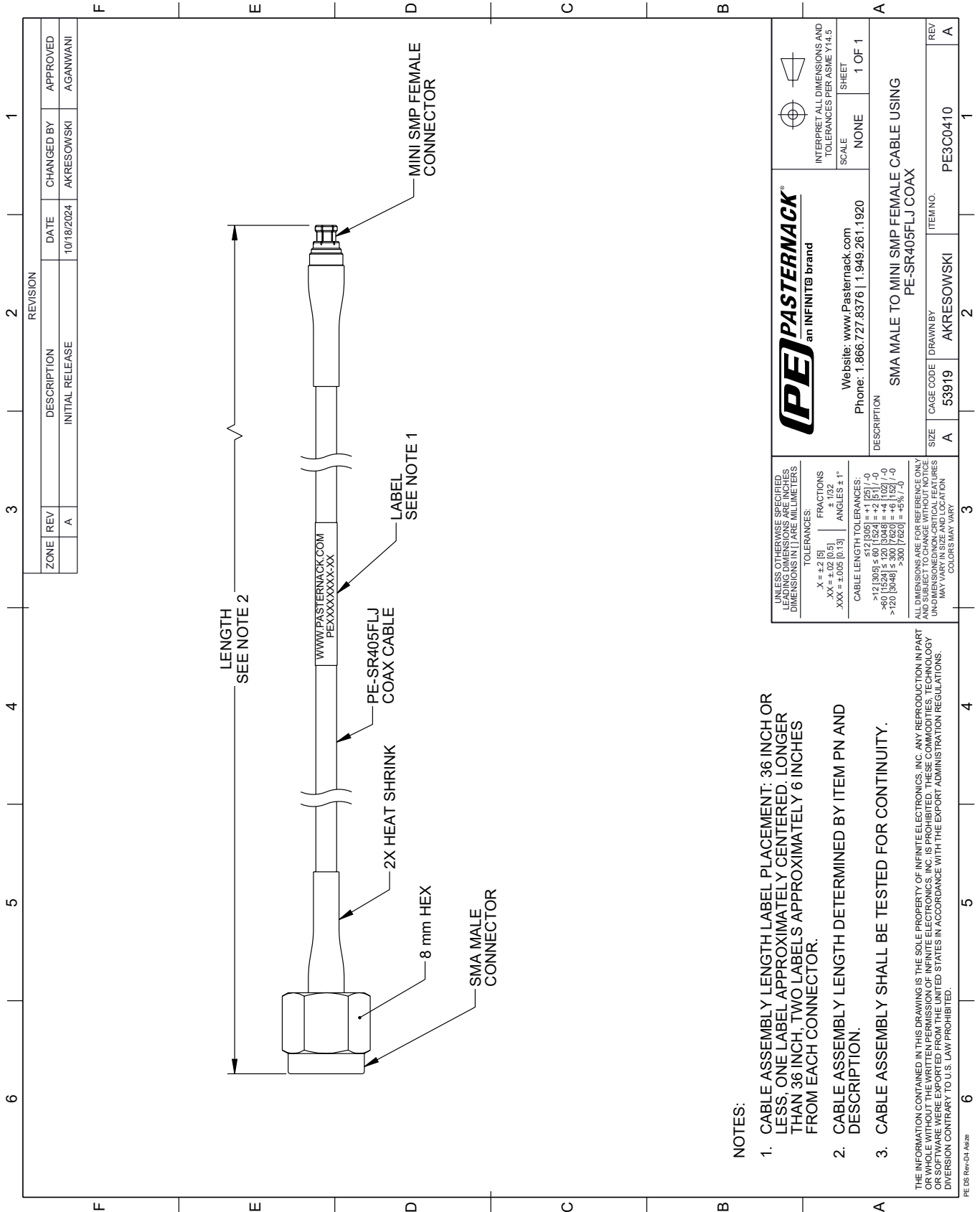
Click the following link (or enter part number in "SEARCH" on website) to obtain additional part information including price, inventory and certifications: [SMA Male to Mini SMP Female Cable Using PE-SR405FLJ Coax PE3C0410](#)

URL: <https://www.pasternack.com/sma-male-to-mini-smp-female-cable-using-pe-sr405flj-pe3c0410-p.aspx>

The information contained within this document is accurate to the best of our knowledge and representative of the part described herein. It may be necessary to make modifications to the part and/or the documentation of the part in order to implement improvements. Pasternack Enterprises reserves the right to make such changes as required. Unless otherwise stated, all specifications are nominal. Pasternack Enterprises does not make any representation or warranty regarding the suitability of the part described herein for any particular purpose, and Pasternack Enterprises does not assume liability arising out of the use of any part or document.

# PE3C0410 CAD Drawing

SMA Male to Mini SMP Female Cable Using PE-SR405FLJ Coax



**NOTES:**

1. CABLE ASSEMBLY LENGTH LABEL PLACEMENT: 36 INCH OR LESS, ONE LABEL APPROXIMATELY CENTERED, LONGER THAN 36 INCH, TWO LABELS APPROXIMATELY 6 INCHES FROM EACH CONNECTOR.
2. CABLE ASSEMBLY LENGTH DETERMINED BY ITEM PN AND DESCRIPTION.
3. CABLE ASSEMBLY SHALL BE TESTED FOR CONTINUITY.

THE INFORMATION CONTAINED IN THIS DRAWING IS THE SOLE PROPERTY OF INFINITE ELECTRONICS, INC. ANY REPRODUCTION IN PART OR WHOLE WITHOUT THE WRITTEN PERMISSION OF INFINITE ELECTRONICS, INC. IS PROHIBITED. THESE COMMODITIES, TECHNOLOGY OR SOFTWARE WERE EXPORTED FROM THE UNITED STATES IN ACCORDANCE WITH THE EXPORT ADMINISTRATION REGULATIONS. DIVERSION CONTRARY TO U.S. LAW PROHIBITED.

PE DS Rev-D4 Add2

REVISION		DATE	CHANGED BY	APPROVED
ZONE	REV	DESCRIPTION	INITIAL RELEASE	AKRESOWSKI
	A			AGANWANI

 an INFINITE brand		Website: <a href="http://www.Pasternack.com">www.Pasternack.com</a> Phone: 1.866.727.8376   1.949.261.1920	INTERPRET ALL DIMENSIONS AND TOLERANCES PER ASME Y14.5 SCALE: NONE SHEET: 1 OF 1
DESCRIPTION: SMA MALE TO MINI SMP FEMALE CABLE USING PE-SR405FLJ COAX			
SIZE: A	CAGE CODE: 53919	DRAWN BY: AKRESOWSKI	ITEM NO.: PE3C0410

UNLESS OTHERWISE SPECIFIED, LEADING DIMENSIONS ARE IN INCHES AND TRAILING DIMENSIONS ARE IN MILLIMETERS.

TOLERANCES:  
 .X = ±.2 (5)      FRACTIONS ± 1/32  
 .XX = ±.02 (0.5)      ANGLES ± 1°  
 .XXX = ±.005 (0.13)

CABLE LENGTH TOLERANCES:  
 >12 (305) ≤ 60 (1524) = ±.1 (25) / -0  
 >60 (1524) ≤ 120 (3048) = ±.4 (102) / -0  
 >120 (3048) ≤ 300 (7620) = ±.6 (15) / -0

ALL DIMENSIONS ARE FOR REFERENCE ONLY. UNDIMENSIONED/UNCLEAR FEATURES MAY VARY IN SIZE AND LOCATION. COLORS MAY VARY.