

75 Ohm BNC Male to 75 Ohm F Male Low Loss Cable Using 75 Ohm LMR-240-75-DB Coax with Times Microwave Components



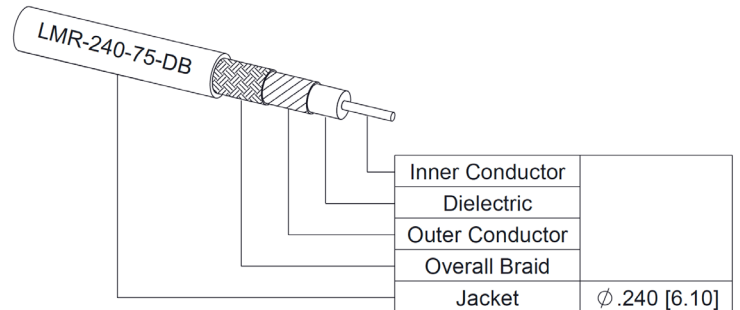
PE3C10258

Configuration

- Connector 1: BNC Male
- Connector 2: F Male
- Cable Type: LMR-240-75-DB
- Coax Cable Group: 94

Features

- Max Frequency 2 GHz
- 84% Phase Velocity
- PE Jacket



Applications

- General Purpose
- Laboratory Use

Description

Pasternack's PE3C10258 75 ohm BNC male to 75 ohm type F male cable using 75 ohm LMR-240-75-DB coax is part of our full line of RF components available for same-day shipping. This Pasternack BNC to type F cable assembly has a male to male gender configuration with 75 ohm LMR-240-75-DB coax. The PE3C10258 BNC male to type F male cable assembly operates to 2 GHz.

Custom versions of most RF cable assemblies can be built and shipped same day. Custom cable assembly lengths can be obtained by specifying the desired length on the web site at time of order or by contacting a sales representative. Other available RF cable assembly value added services include connector orientation or clocking, heat shrink booting and custom labeling. RF testing can also be performed to document the electrical performance of your cable assembly.

Electrical Specifications

Description	Minimum	Typical	Maximum	Units
Frequency Range	DC		2	GHz
VSWR			1.4:1	
Velocity of Propagation		84		%

Specifications by Frequency

75 Ohm BNC Male to 75 Ohm F Male Low Loss Cable Using 75 Ohm LMR-240-75-DB Coax with Times Microwave Components



PE3C10258

Part Number	Length	Description	F1	F2	F3	F4	F5	Units	Weight (lbs)
			Frequency					MHz	
PE3C10258	Custom Lengths Available	Insertion Loss (Typ.)	0.016	0.022	0.036	0.052	0.109	dB/ft	
			0.06	0.08	0.12	0.18	0.36	dB/m	
PE3C10258-12	12 Inch	Insertion Loss (Typ.)	0.14	0.16	0.19	0.23	0.36	dB	0.094
PE3C10258-24	24 Inch	Insertion Loss (Typ.)	0.16	0.18	0.23	0.28	0.46	dB	0.13
PE3C10258-36	36 Inch	Insertion Loss (Typ.)	0.18	0.2	0.26	0.33	0.57	dB	0.165
PE3C10258-48	48 Inch	Insertion Loss (Typ.)	0.19	0.22	0.3	0.38	0.68	dB	0.2
PE3C10258-60	60 Inch	Insertion Loss (Typ.)	0.21	0.25	0.33	0.44	0.79	dB	0.235

The insertion loss data for the base model does not include loss due to the connectors. Each length includes insertion loss due to the connectors.

Loss due to Connector 1: 0.1*SQRT(FGHz) dB
 Loss due to Connector 2: 0.1 dB
 Base Weight: 0.094 pounds
 Additional Weight per Inch: 0.00292 pounds

Mechanical Specifications

Cable Assembly

Width/Diameter 0.5 in [12.7 mm]
 Weight 0.094 lbs [42.64 g]

Cable

Cable Type LMR-240-75-DB
 Impedance 75 Ohms
 Inner Conductor Type Stranded
 Inner Conductor Material and Plating Copper
 Dielectric Type Foam PE
 Outer Conductor 1 Material and Plating Aluminum Tape
 Outer Conductor Diameter 0.155 in [3.94 mm]
 Jacket Material PE
 Jacket Diameter 0.24 in [6.1 mm]

Connectors

Description	Connector 1	Connector 2
Type	BNC Male	F Male
Impedance	75 Ohms	75 Ohms
Configuration	Straight	Straight
Mating Cycles	500	
Contact Material and Plating	Brass, Gold over Nickel over Copper	Beryllium Copper
Contact Plating Specification	50 µin minimum	
Dielectric Type	PTFE	PTFE
Body Material and Plating	Brass, Tri-Metal	Nickel, Gold over Copper
Body Plating Specification	80 µin minimum	50 µin minimum

75 Ohm BNC Male to 75 Ohm F Male Low Loss Cable Using 75 Ohm LMR-240-75-DB Coax with Times Microwave Components



PE3C10258

Environmental Specifications

Operating Range Temperature -40 to +85 deg C

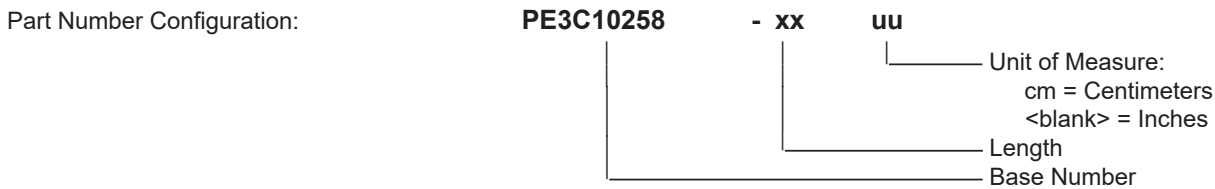
Compliance Certifications (see [product page](#) for current document)

Plotted and Other Data

Notes:

Typical Performance Data

How to Order



Example: PE3C10258-12 = 12 inches long cable
PE3C10258-100cm = 100 cm long cable

75 Ohm BNC Male to 75 Ohm F Male Low Loss Cable Using 75 Ohm LMR-240-75-DB Coax with Times Microwave Components from Pasternack Enterprises has same day shipment for domestic and International orders. Our RF, microwave and millimeter wave products maintain a 99.4% availability and are part of the broadest selection in the industry.

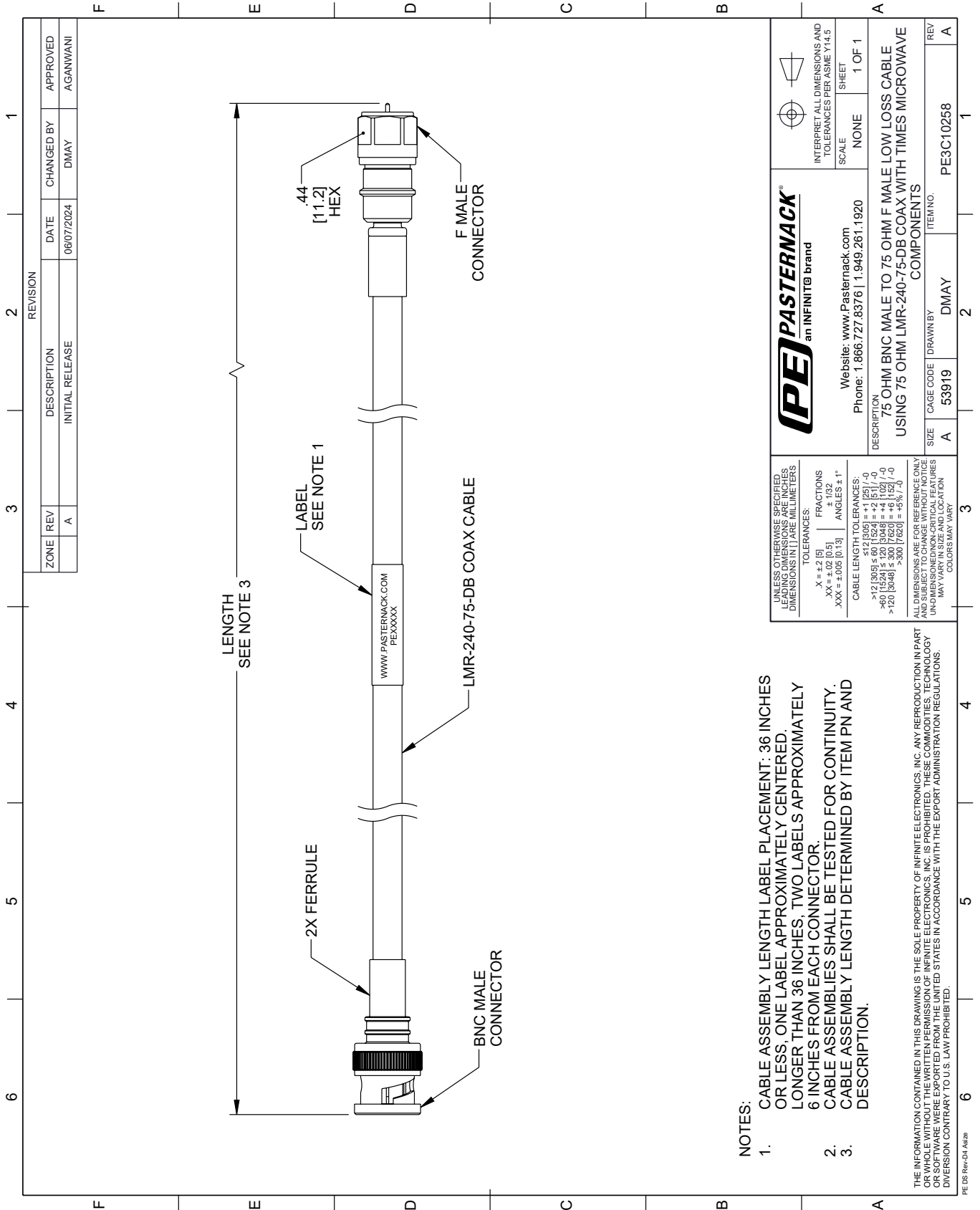
Click the following link (or enter part number in "SEARCH" on website) to obtain additional part information including price, inventory and certifications: [75 Ohm BNC Male to 75 Ohm F Male Low Loss Cable Using 75 Ohm LMR-240-75-DB Coax with Times Microwave Components PE3C10258](#)

URL: <https://www.pasternack.com/75-ohm-bnc-male-to-75-ohm-f-male-low-loss-cable-using-lmr-240-75-db-pe3c10258-p.aspx>

The information contained within this document is accurate to the best of our knowledge and representative of the part described herein. It may be necessary to make modifications to the part and/or the documentation of the part in order to implement improvements. Pasternack Enterprises reserves the right to make such changes as required. Unless otherwise stated, all specifications are nominal. Pasternack Enterprises does not make any representation or warranty regarding the suitability of the part described herein for any particular purpose, and Pasternack Enterprises does not assume liability arising out of the use of any part or document.

PE3C10258 CAD Drawing

75 Ohm BNC Male to 75 Ohm F Male Low Loss Cable Using 75 Ohm LMR-240-75-DB Coax with Times Microwave Components



ZONE	REV	DESCRIPTION	DATE	CHANGED BY	APPROVED
	A	INITIAL RELEASE	06/07/2024	DMAY	AGANWANI

PE PASTERNAK
an INFINITE brand

Website: www.Pasternack.com
Phone: 1.866.727.8376 | 1.949.261.1920

INTERPRET ALL DIMENSIONS AND TOLERANCES PER ASME Y14.5

SCALE: NONE
SHEET: 1 OF 1

DESCRIPTION:
75 OHM BNC MALE TO 75 OHM F MALE LOW LOSS CABLE
USING 75 OHM LMR-240-75-DB COAX WITH TIMES MICROWAVE COMPONENTS

SIZE	A	CAGE CODE	DMAY	ITEM NO.	PE3C10258
REV	A				

UNLESS OTHERWISE SPECIFIED, LEADING DIMENSIONS ARE IN INCHES, DIMENSIONS IN [] ARE MILLIMETERS.

TOLERANCES:
 .X = ±.2 [5]
 .XX = ±.02 [0.5]
 .XXX = ±.005 [0.13]

FRACTIONS
 ± 1/32
 ANGLES ± 1°

CABLE LENGTH TOLERANCES:
 >12 [305] ≤ 60 [1524] = ±.125 [-0
 >60 [1524] ≤ 120 [3048] = ±.102 [-0
 >120 [3048] ≤ 300 [7620] = ±.063 [-0
 >300 [7620] = ±.063 [-0]

ALL DIMENSIONS ARE FOR REFERENCE ONLY. UNDIMENSIONED NON-CRITICAL FEATURES MAY VARY IN SIZE AND LOCATION. COLORS MAY VARY.

THE INFORMATION CONTAINED IN THIS DRAWING IS THE SOLE PROPERTY OF INFINITE ELECTRONICS, INC. ANY REPRODUCTION IN PART OR WHOLE WITHOUT THE WRITTEN PERMISSION OF INFINITE ELECTRONICS, INC. IS PROHIBITED. THESE COMMODITIES, TECHNOLOGY OR SOFTWARE ARE EXPORTED FROM THE UNITED STATES IN ACCORDANCE WITH THE EXPORT ADMINISTRATION REGULATIONS. DIVERSION CONTRARY TO U.S. LAW PROHIBITED.

PE DS Rev-04 Add2

- NOTES:
- CABLE ASSEMBLY LENGTH LABEL PLACEMENT: 36 INCHES OR LESS, ONE LABEL APPROXIMATELY CENTERED, LONGER THAN 36 INCHES, TWO LABELS APPROXIMATELY 6 INCHES FROM EACH CONNECTOR.
 - CABLE ASSEMBLIES SHALL BE TESTED FOR CONTINUITY.
 - CABLE ASSEMBLY LENGTH DETERMINED BY ITEM PN AND DESCRIPTION.