

C Male Right Angle to Straight Cut Lead Cable Using RG393 Coax



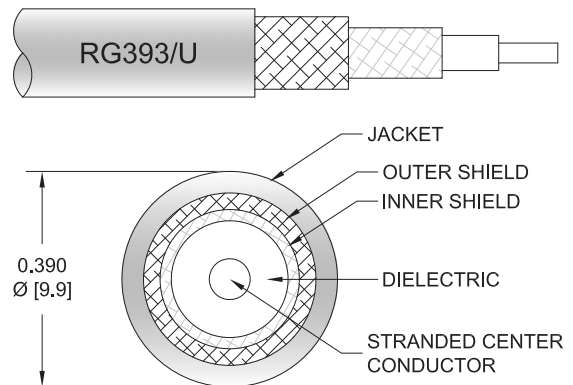
PE3C1634

Configuration

- Connector 1: C Male Right Angle
- Connector 2: Straight Cut Lead
- Cable Type: RG393
- Coax Flex Type: Flexible

Features

- 69.5% Phase Velocity
- Double Shielded
- FEP Jacket



Applications

- General Purpose
- Laboratory Use

Description

Pasternack's PE3C1634 50 ohm type C male right angle to straight cut lead cable using RG393 coax is part of our full line of RF components available for same-day shipping. Pasternack's flexible RF cable assemblies are ideal for applications where tight bends and flexure are required. The right angle type C interface on the RG393 cable allows for easier connections in tight spaces. The double shielding of this Pasternack cable assembly provides excellent shielding effectiveness.

Custom versions of most RF cable assemblies can be built and shipped same day. Custom cable assembly lengths can be obtained by specifying the desired length on the web site at time of order or by contacting a sales representative. Other available RF cable assembly value added services include connector orientation or clocking, heat shrink booting and custom labeling. RF testing can also be performed to document the electrical performance of your cable assembly.

Electrical Specifications

Description	Minimum	Typical	Maximum	Units
Velocity of Propagation		69.5		%
Capacitance		29.4 [96.46]		pF/ft [pF/m]

Mechanical Specifications

Cable Assembly

Width/Diameter	0.5 in [12.7 mm]
Weight	0.337 lbs [152.86 g]

Cable

Cable Type	RG393
Impedance	50 Ohms
Inner Conductor Type	Stranded
Inner Conductor Material and Plating	Copper, Silver
Dielectric Type	PTFE

C Male Right Angle to Straight Cut Lead Cable Using RG393 Coax



PE3C1634

Number of Shields	2
Shield Layer 1	Silver Plated Copper Braid
Shield Layer 2	Silver Plated Copper Braid
Jacket Material	FEP, Tan
Jacket Diameter	0.39 in [9.91 mm]
Repeated Minimum Bend Radius	3.9 in [99.06 mm]

Connectors

Description	Connector 1	Connector 2
Type	C Male Right Angle	Straight Cut Lead
Specification	MIL-STD-348A	
Impedance	50 Ohms	0 Ohms
Configuration	Right Angle	Straight
Contact Material and Plating	Brass, Gold	
Dielectric Type	PTFE	
Body Material and Plating	Brass, Nickel	
Body Plating Specification	100 µin minimum	
Coupling Nut Material and Plating	Brass, Nickel	
Coupling Nut Plating Specification	100 µin minimum	

Environmental Specifications

Compliance Certifications (see [product page](#) for current document)

Plotted and Other Data

Notes:

C Male Right Angle to Straight Cut Lead Cable Using RG393 Coax



PE3C1634

Typical Performance Data

How to Order

Part Number Configuration:

PE3C1634

- xx

uu

Unit of Measure:

cm = Centimeters

<blank> = Inches

Length

Base Number

Example: PE3C1634-12 = 12 inches long cable
PE3C1634-100cm = 100 cm long cable

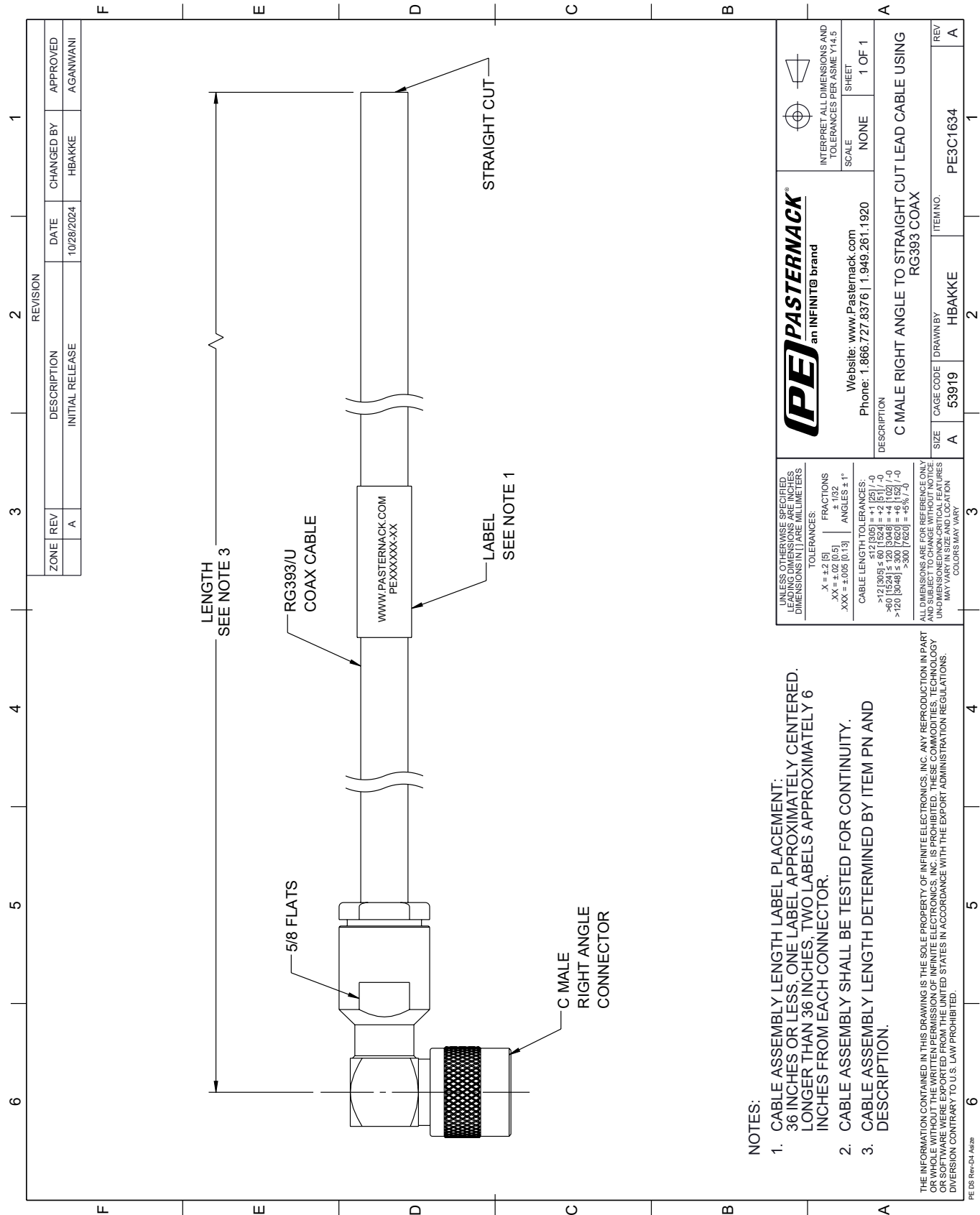
C Male Right Angle to Straight Cut Lead Cable Using RG393 Coax from Pasternack Enterprises has same day shipment for domestic and International orders. Our RF, microwave and millimeter wave products maintain a 99.4% availability and are part of the broadest selection in the industry.

Click the following link (or enter part number in "SEARCH" on website) to obtain additional part information including price, inventory and certifications: [C Male Right Angle to Straight Cut Lead Cable Using RG393 Coax PE3C1634](https://www.pasternack.com/c-male-right-angle-to-straight-cut-lead-cable-using-rg393-pe3c1634-p.aspx)

URL: <https://www.pasternack.com/c-male-right-angle-to-straight-cut-lead-cable-using-rg393-pe3c1634-p.aspx>

The information contained within this document is accurate to the best of our knowledge and representative of the part described herein. It may be necessary to make modifications to the part and/or the documentation of the part in order to implement improvements. Pasternack Enterprises reserves the right to make such changes as required. Unless otherwise stated, all specifications are nominal. Pasternack Enterprises does not make any representation or warranty regarding the suitability of the part described herein for any particular purpose, and Pasternack Enterprises does not assume liability arising out of the use of any part or document.

PE3C1634 CAD Drawing
C Male Right Angle to Straight Cut Lead Cable Using RG393 Coax



- 1. CABLE ASSEMBLY LENGTH LABEL PLACEMENT: 36 INCHES OR LESS, ONE LABEL APPROXIMATELY CENTERED. LONGER THAN 36 INCHES, TWO LABELS APPROXIMATELY 6 INCHES FROM EACH CONNECTOR.
- 2. CABLE ASSEMBLY SHALL BE TESTED FOR CONTINUITY.
- 3. CABLE ASSEMBLY LENGTH DETERMINED BY ITEM PN AND DESCRIPTION.