

SMA Male to TNC Female Bulkhead Cable Using PE-SR405FLJ Coax



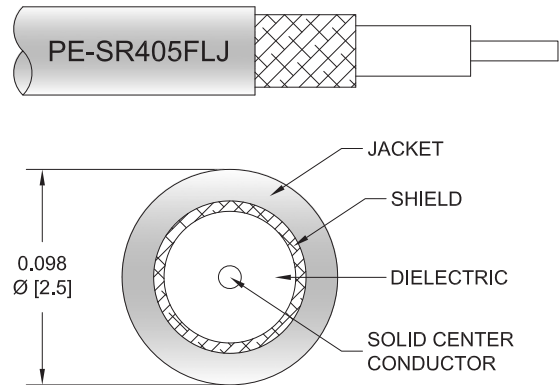
PE3C2941

Configuration

- Connector 1: SMA Male
- Connector 2: TNC Female Bulkhead
- Cable Type: PE-SR405FLJ
- Coax Flex Type: Formable

Features

- Max Frequency 6 GHz
- Shielding Effectivity > 100 dB
- 69.5% Phase Velocity
- FEP Jacket



Applications

- General Purpose
- Laboratory Use

Description

Pasternack's PE3C2941 SMA male to TNC female bulkhead cable using PE-SR405FLJ coax is part of our full line of RF components available for same-day shipping. Pasternack's formable RF cable assemblies provide an alternative to costly pre-formed semi-rigid assemblies since they are hand formable. This Pasternack SMA to TNC cable assembly has a male to female gender configuration with 50 ohm formable PE-SR405FLJ coax. The PE3C2941 SMA male to TNC female cable assembly operates to 6 GHz. Our RF cable assembly with TNC bulkhead interface allows designers to create external connections on their product enclosures, and can be used in a variety of other rack mount and panel mount applications.

Custom versions of most RF cable assemblies can be built and shipped same day. Custom cable assembly lengths can be obtained by specifying the desired length on the web site at time of order or by contacting a sales representative. Other available RF cable assembly value added services include connector orientation or clocking, heat shrink booting and custom labeling. RF testing can also be performed to document the electrical performance of your cable assembly.

Electrical Specifications

Description	Minimum	Typical	Maximum	Units
Frequency Range	DC		6	GHz
VSWR			1.4:1	
Velocity of Propagation		69.5		%
RF Shielding	100			dB
Group Delay		1.43 [4.69]		ns/ft [ns/m]
Capacitance		29 [95.14]		pF/ft [pF/m]

Specifications by Frequency

SMA Male to TNC Female Bulkhead Cable Using PE-SR405FLJ Coax



PE3C2941

Part Number	Length	Description	F1	F2	F3	F4	F5	Units	Weight (lbs)
		Frequency	500	1000	2500	5000	6000	MHz	
PE3C2941	Custom Lengths Available	Insertion Loss (Typ.)	0.15	0.23	0.306	0.549	0.601	dB/ft	
			0.5	0.74	1.01	1.81	1.98	dB/m	
PE3C2941-6	6 inch	Insertion Loss (Typ.)	0.28	0.32	0.36	0.48	0.51	dB	0.053
PE3C2941-9	9 inch	Insertion Loss (Typ.)	0.32	0.37	0.43	0.62	0.66	dB	0.057
PE3C2941-12	12 inch	Insertion Loss (Typ.)	0.35	0.43	0.51	0.75	0.81	dB	0.06
PE3C2941-18	18 inch	Insertion Loss (Typ.)	0.43	0.54	0.66	1.03	1.11	dB	0.068
PE3C2941-24	24 inch	Insertion Loss (Typ.)	0.5	0.65	0.82	1.3	1.41	dB	0.075

The insertion loss data for the base model does not include loss due to the connectors. Each length includes insertion loss due to the connectors.

Loss due to Connector 1:	0.1 dB
Loss due to Connector 2:	0.1 dB
Base Weight:	0.06 pounds
Additional Weight per Inch:	0.00117 pounds

Mechanical Specifications

Cable Assembly

Width/Diameter	0.5 in [12.7 mm]
Weight	0.06 lbs [27.22 g]

Cable

Cable Type	PE-SR405FLJ
Impedance	50 Ohms
Inner Conductor Type	Solid
Inner Conductor Material and Plating	Copper Clad Steel, Silver
Dielectric Type	PTFE
Number of Shields	1
Shield Layer 1	Tinned Copper Braid
Jacket Material	FEP, Black
Jacket Diameter	0.098 in [2.49 mm]
One Time Minimum Bend Radius	0.236 in [5.99 mm]
Repeated Minimum Bend Radius	0.787 in [19.99 mm]

SMA Male to TNC Female Bulkhead Cable Using PE-SR405FLJ Coax



PE3C2941

Connectors

Description	Connector 1	Connector 2
Type	SMA Male	TNC Female Bulkhead
Impedance	50 Ohms	50 Ohms
Configuration	Straight	Straight
Contact Material and Plating	Brass, Gold over Nickel	Beryllium Copper, Gold over Nickel
Dielectric Type	PTFE	PTFE
Body Material and Plating	Brass, Gold over Nickel	Brass, Nickel
Coupling Nut Material and Plating	Passivated Stainless Steel	
Hex Size	5/16 inch	
Torque	8 in-lbs 0.9 Nm	

Environmental Specifications

Compliance Certifications (see [product page](#) for current document)

Plotted and Other Data

Notes:

SMA Male to TNC Female Bulkhead Cable Using PE-SR405FLJ Coax



PE3C2941

Typical Performance Data

How to Order

Part Number Configuration:

PE3C2941

- xx

uu

Unit of Measure:

cm = Centimeters

<blank> = Inches

Length

Base Number

Example: PE3C2941-12 = 12 inches long cable
PE3C2941-100cm = 100 cm long cable

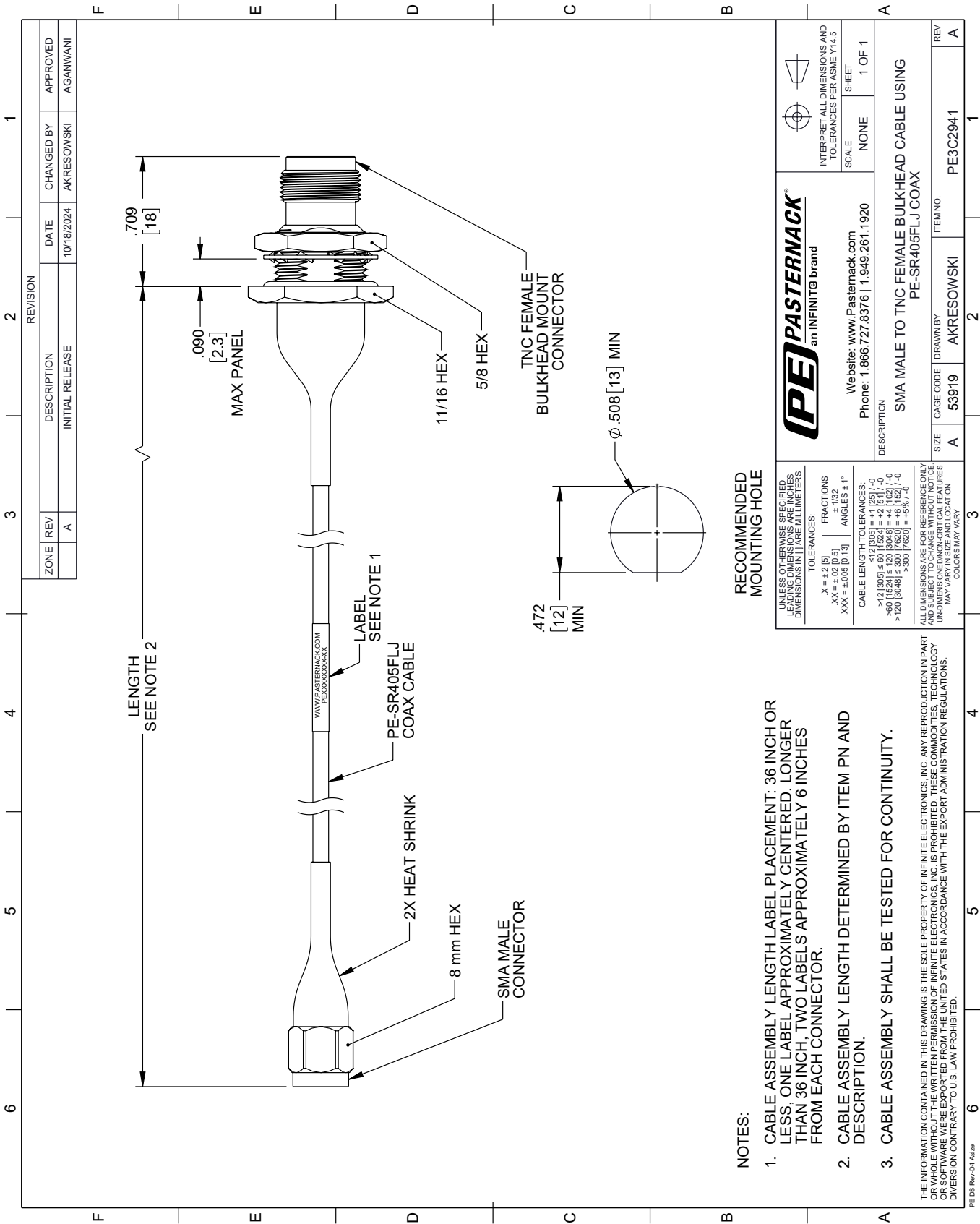
SMA Male to TNC Female Bulkhead Cable Using PE-SR405FLJ Coax from Pasternack Enterprises has same day shipment for domestic and International orders. Our RF, microwave and millimeter wave products maintain a 99.4% availability and are part of the broadest selection in the industry.

Click the following link (or enter part number in "SEARCH" on website) to obtain additional part information including price, inventory and certifications: [SMA Male to TNC Female Bulkhead Cable Using PE-SR405FLJ Coax PE3C2941](https://www.pasternack.com/sma-male-to-tnc-female-bulkhead-cable-using-pe-sr405flj-pe3c2941-p.aspx)

URL: <https://www.pasternack.com/sma-male-to-tnc-female-bulkhead-cable-using-pe-sr405flj-pe3c2941-p.aspx>

The information contained within this document is accurate to the best of our knowledge and representative of the part described herein. It may be necessary to make modifications to the part and/or the documentation of the part in order to implement improvements. Pasternack Enterprises reserves the right to make such changes as required. Unless otherwise stated, all specifications are nominal. Pasternack Enterprises does not make any representation or warranty regarding the suitability of the part described herein for any particular purpose, and Pasternack Enterprises does not assume liability arising out of the use of any part or document.

PE3C2941 CAD Drawing
SMA Male to TNC Female Bulkhead Cable Using PE-SR405FLJ Coax



NOTES:

- 1. CABLE ASSEMBLY LENGTH LABEL PLACEMENT: 36 INCH OR LESS, ONE LABEL APPROXIMATELY CENTERED, LONGER THAN 36 INCH, TWO LABELS APPROXIMATELY 6 INCHES FROM EACH CONNECTOR.
- 2. CABLE ASSEMBLY LENGTH DETERMINED BY ITEM PN AND DESCRIPTION.
- 3. CABLE ASSEMBLY SHALL BE TESTED FOR CONTINUITY.

PE PASTERNAK an INFINITI® brand		Website: www.Pasternack.com Phone: 1.866.727.8376 1.949.261.1920		INTERPRET ALL DIMENSIONS AND TOLERANCES PER ASME Y14.5	
UNLESS OTHERWISE SPECIFIED, ALL DIMENSIONS ARE IN INCHES. DIMENSIONS IN [] ARE MILLIMETERS.		TOLERANCES:		SCALE: NONE	
X = ±.2 [5]		FRACTIONS: ± 1/32		SHEET: 1 OF 1	
.XX = ±.02 [0.5]		ANGLES: ± 1°			
.XXX = ±.005 [0.13]					
CABLE LENGTH TOLERANCES:					
>12 [305] ≤ 60 [1524] = ±.1 [25] / -0					
>60 [1524] ≤ 120 [3048] = ±.1 [25] / -0					
>120 [3048] ≤ 300 [7620] = ±.1 [25] / -0					
ALL DIMENSIONS ARE FOR REFERENCE ONLY. DIMENSIONS MAY VARY IN SIZE AND LOCATION. UNLESS OTHERWISE SPECIFIED, DIMENSIONS ARE IN INCHES. DIMENSIONS IN [] ARE MILLIMETERS. COLORS MAY VARY.					
DESCRIPTION: SMA MALE TO TNC FEMALE BULKHEAD CABLE USING PE-SR405FLJ COAX		ITEM NO: PE3C2941		REV: A	
SIZE: A		CAGE CODE: 53919		DRAWN BY: AKRESOWSKI	