

SMA Female 4 Hole Flange to Straight Cut Lead Cable Using RG402 Coax



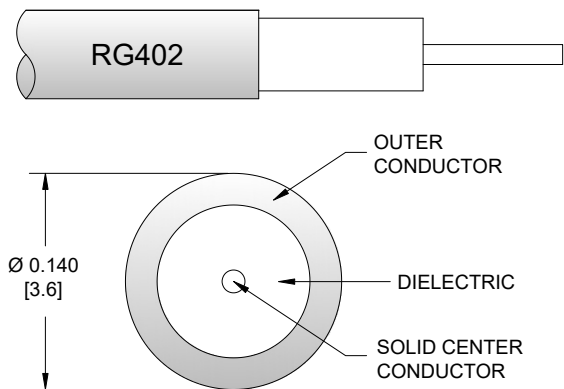
PE3C3022

Configuration

- Connector 1: SMA Female 4 Hole Flange
- Connector 2: Straight Cut Lead
- Cable Type: RG402
- Coax Flex Type: Semi-Rigid

Features

- Max Frequency 18 GHz



Applications

- General Purpose
- Laboratory Use

Description

Pasternack's PE3C3022 50 ohm SMA female 4 hole flange to straight cut lead cable using RG402 coax is part of our full line of RF components available for same-day shipping. Pasternack's semi-rigid RF cable assemblies are ideal for high performance applications and can be formed, using proper tooling, to the routing pattern required. The PE3C3022 SMA female to straight cut lead cable assembly operates to 18 GHz. Our RF cable assembly with SMA 4 hole flange interface allows designers to create external connections on their product enclosures, and can be used in a variety of other rack mount and panel mount applications.

Custom versions of most RF cable assemblies can be built and shipped same day. Custom cable assembly lengths can be obtained by specifying the desired length on the web site at time of order or by contacting a sales representative. Other available RF cable assembly value added services include connector orientation or clocking, heat shrink booting and custom labeling. RF testing can also be performed to document the electrical performance of your cable assembly.

Electrical Specifications

Description	Minimum	Typical	Maximum	Units
Frequency Range	DC		18	GHz
Capacitance		29.9 [98.1]		pF/ft [pF/m]

Specifications by Frequency

SMA Female 4 Hole Flange to Straight Cut Lead Cable Using RG402 Coax



PE3C3022

Part Number	Length	Description	F1	F2	F3	F4	F5	Units	Weight (lbs)
			Frequency					MHz	
PE3C3022	Custom Lengths Available	Insertion Loss (Typ.)	0.11	0.15	0.26	0.4	0.636	dB/ft	
			0.37	0.51	0.86	1.33	2.09	dB/m	
PE3C3022-6	6 inch	Insertion Loss (Typ.)	0.26	0.28	0.33	0.41	0.52	dB	0.022
PE3C3022-12	12 inch	Insertion Loss (Typ.)	0.32	0.36	0.46	0.61	0.84	dB	0.038
PE3C3022-24	24 inch	Insertion Loss (Typ.)	0.43	0.51	0.72	1.01	1.48	dB	0.071
PE3C3022-36	36 inch	Insertion Loss (Typ.)	0.54	0.67	0.98	1.42	2.11	dB	0.103
PE3C3022-60	60 inch	Insertion Loss (Typ.)	0.76	0.97	1.5	2.22	3.38	dB	0.167

The insertion loss data for the base model does not include loss due to the connectors. Each length includes insertion loss due to the connectors.

Loss due to Connector 1:	0.1 dB
Loss due to Connector 2:	0.1 dB
Base Weight:	0.038 pounds
Additional Weight per Inch:	0.00267 pounds

Mechanical Specifications

Cable Assembly

Width/Diameter	0.5 in [12.7 mm]
Weight	0.038 lbs [17.24 g]

Cable

Cable Type	RG402
Impedance	50 Ohms
Inner Conductor Type	Solid
Inner Conductor Material and Plating	Copper Clad Steel, Silver
Dielectric Type	PTFE
Number of Shields	1
Shield Layer 1	Copper
Jacket Material	Tan

Connectors

Description	Connector 1	Connector 2
Type	SMA Female 4 Hole Flange	Straight Cut Lead
Specification	MIL-STD-348, MIL-39012	
Impedance	50 Ohms	0 Ohms
Configuration	Straight	Straight
Contact Material and Plating	Beryllium Copper, Gold	
Contact Plating Specification	MIL-G-45204	
Dielectric Type	Teflon	
Body Material and Plating	Stainless Steel, Gold	
Body Plating Specification	MIL-G-45204	

SMA Female 4 Hole Flange to Straight Cut Lead Cable Using RG402 Coax



PE3C3022

Environmental Specifications

Compliance Certifications (see [product page](#) for current document)

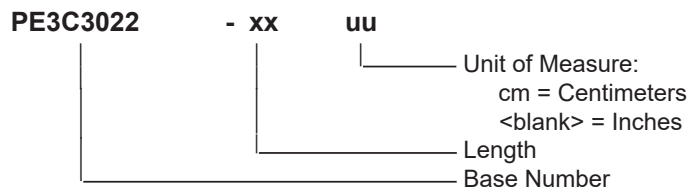
Plotted and Other Data

Notes:

Typical Performance Data

How to Order

Part Number Configuration:



Example: PE3C3022-12 = 12 inches long cable
PE3C3022-100cm = 100 cm long cable

SMA Female 4 Hole Flange to Straight Cut Lead Cable Using RG402 Coax from Pasternack Enterprises has same day shipment for domestic and International orders. Our RF, microwave and millimeter wave products maintain a 99.4% availability and are part of the broadest selection in the industry.

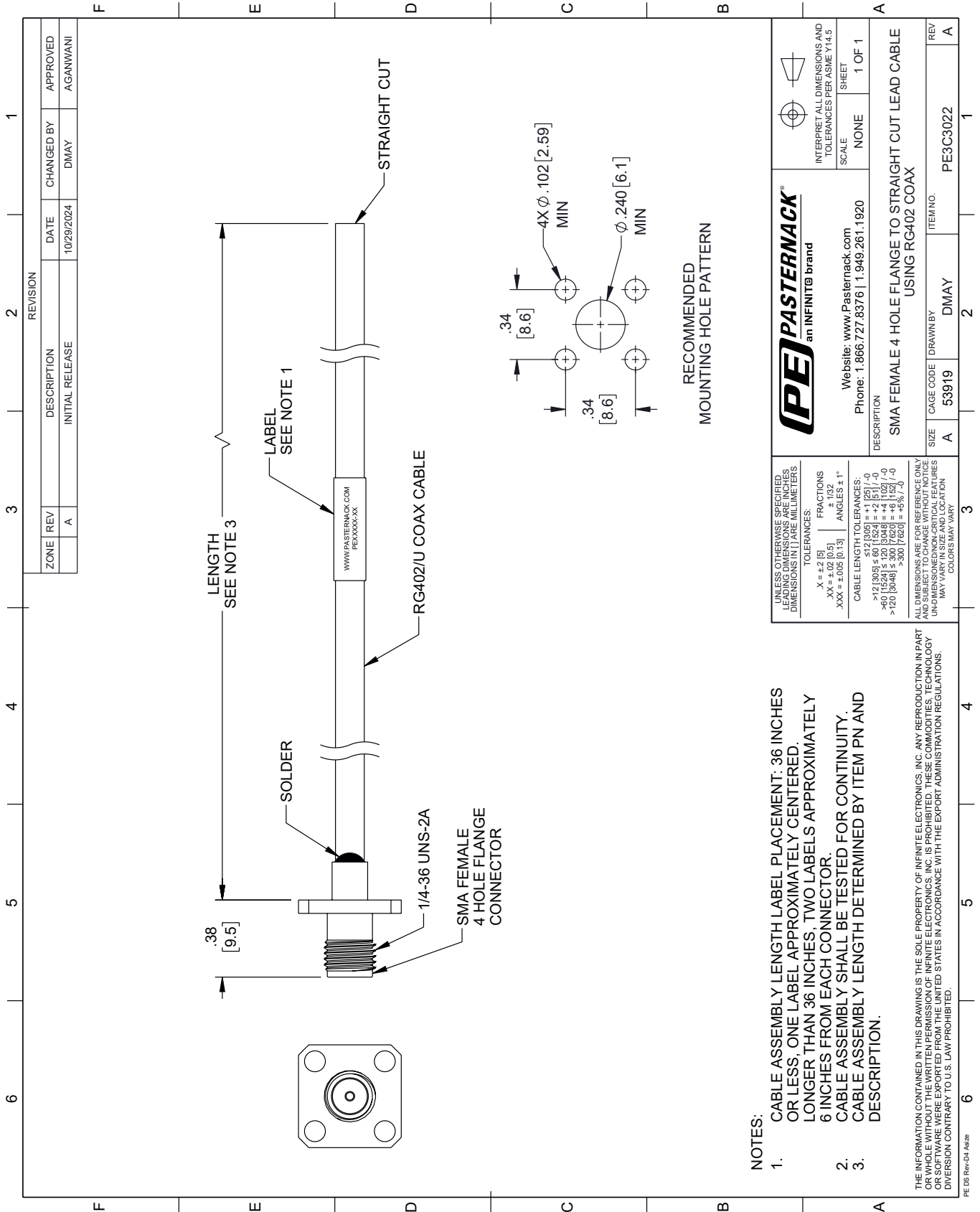
Click the following link (or enter part number in "SEARCH" on website) to obtain additional part information including price, inventory and certifications: [SMA Female 4 Hole Flange to Straight Cut Lead Cable Using RG402 Coax PE3C3022](#)

URL: <https://www.pasternack.com/sma-female-4-hole-flange-to-straight-cut-lead-cable-using-rg402-pe3c3022-p.aspx>

The information contained within this document is accurate to the best of our knowledge and representative of the part described herein. It may be necessary to make modifications to the part and/or the documentation of the part in order to implement improvements. Pasternack Enterprises reserves the right to make such changes as required. Unless otherwise stated, all specifications are nominal. Pasternack Enterprises does not make any representation or warranty regarding the suitability of the part described herein for any particular purpose, and Pasternack Enterprises does not assume liability arising out of the use of any part or document.

PE3C3022 CAD Drawing

SMA Female 4 Hole Flange to Straight Cut Lead Cable Using RG402 Coax



NOTES:

- CABLE ASSEMBLY LENGTH LABEL PLACEMENT: 36 INCHES OR LESS, ONE LABEL APPROXIMATELY CENTERED, LONGER THAN 36 INCHES, TWO LABELS APPROXIMATELY 6 INCHES FROM EACH CONNECTOR.
- CABLE ASSEMBLY SHALL BE TESTED FOR CONTINUITY.
- CABLE ASSEMBLY LENGTH DETERMINED BY ITEM PN AND DESCRIPTION.

THE INFORMATION CONTAINED IN THIS DRAWING IS THE SOLE PROPERTY OF INFINITE ELECTRONICS, INC. ANY REPRODUCTION IN PART OR WHOLE WITHOUT THE WRITTEN PERMISSION OF INFINITE ELECTRONICS, INC. IS PROHIBITED. THESE COMMODITIES, TECHNOLOGY OR SOFTWARE WERE EXPORTED FROM THE UNITED STATES IN ACCORDANCE WITH THE EXPORT ADMINISTRATION REGULATIONS. DIVERSION CONTRARY TO U.S. LAW PROHIBITED.

UNLESS OTHERWISE SPECIFIED, LEADING DIMENSIONS ARE IN INCHES, DIMENSIONS IN [] ARE MILLIMETERS.

TOLERANCES:
 .X = ±.2 [5]
 .XX = ±.02 [0.5]
 .XXX = ±.005 [0.13]

FRACTIONS: ± 1/32
 ANGLES ± 1°

CABLE LENGTH TOLERANCES:
 <12 [305] ≤ 60 [1524] = ±1 [25] / -0
 >60 [1524] ≤ 120 [3048] = ±4 [102] / -0
 >120 [3048] ≤ 300 [7620] = ±5% / -0

ALL DIMENSIONS ARE FOR REFERENCE ONLY. UNDIMENSIONED NON-CRITICAL FEATURES MAY VARY IN SIZE AND LOCATION. COLORS MAY VARY.

PE PASTERNAK
 an INFINITI[®] brand

Website: www.Pasternack.com
 Phone: 1.866.727.8376 | 1.949.261.1920

INTERPRET ALL DIMENSIONS AND TOLERANCES PER ASME Y14.5

SCALE: NONE
 SHEET: 1 OF 1

DESCRIPTION: SMA FEMALE 4 HOLE FLANGE TO STRAIGHT CUT LEAD CABLE USING RG402 COAX

SIZE	A	CAGE CODE	DMAY	ITEM NO.	PE3C3022
REV	A				