

## BNC Male to Straight Cut Lead Cable Using RG316-DS Coax



### PE3C3530

#### Configuration

- Connector 1: BNC Male
- Connector 2: Straight Cut Lead
- Cable Type: RG316-DS
- Coax Flex Type: Flexible

#### Features

- Shielding Effectivity > 85 dB
- 69.5% Phase Velocity
- Double Shielded
- FEP Jacket



#### Applications

- General Purpose
- Laboratory Use

#### Description

Pasternack's PE3C3530 50 ohm BNC male to straight cut lead cable using RG316-DS coax is part of our full line of RF components available for same-day shipping. Pasternack's flexible RF cable assemblies are ideal for applications where tight bends and flexure are required. The double shielding of this Pasternack cable assembly provides excellent shielding effectiveness of better than 85 dB.

Custom versions of most RF cable assemblies can be built and shipped same day. Custom cable assembly lengths can be obtained by specifying the desired length on the web site at time of order or by contacting a sales representative. Other available RF cable assembly value added services include connector orientation or clocking, heat shrink booting and custom labeling. RF testing can also be performed to document the electrical performance of your cable assembly.

#### Electrical Specifications

Description	Minimum	Typical	Maximum	Units
Velocity of Propagation		69.5		%
RF Shielding	85			dB
Capacitance		28.96 [95.01]		pF/ft [pF/m]
DC Resistance Inner Conductor		83.82 [275]		Ohms/1000ft [Ohms/Km]
DC Resistance Outer Conductor		5.33 [17.49]		Ohms/1000ft [Ohms/Km]

#### Mechanical Specifications

##### Cable Assembly

Width/Diameter	0.5 in [12.7 mm]
Weight	0.041 lbs [18.6 g]

##### Cable

Cable Type	RG316-DS
Impedance	50 Ohms

## BNC Male to Straight Cut Lead Cable Using RG316-DS Coax



### PE3C3530

Inner Conductor Type	Stranded
Inner Conductor Material and Plating	Copper Clad Steel, Silver
Dielectric Type	PTFE
Number of Shields	2
Shield Layer 1	Silver Plated Copper Braid
Shield Layer 2	Silver Plated Copper Braid
Jacket Material	FEP, Tan
Jacket Diameter	0.114 in [2.9 mm]
One Time Minimum Bend Radius	0.59 in [14.99 mm]
Repeated Minimum Bend Radius	1.57 in [39.88 mm]

### Connectors

Description	Connector 1	Connector 2
Type	BNC Male	Straight Cut Lead
Specification	MIL-STD-348A	
Impedance	50 Ohms	0 Ohms
Configuration	Straight	Straight
Contact Material and Plating	Brass, Gold	
Contact Plating Specification	50µ in. minimum	
Dielectric Type	Teflon	
Body Material and Plating	Brass, Nickel	
Body Plating Specification	100µ in. minimum	
Coupling Nut Material and Plating	Brass, Nickel	
Coupling Nut Plating Specification	100µ in. minimum	

### Environmental Specifications

**Compliance Certifications** (see [product page](#) for current document)

### Plotted and Other Data

Notes:

## BNC Male to Straight Cut Lead Cable Using RG316-DS Coax



### PE3C3530

#### Typical Performance Data

#### How to Order

Part Number Configuration:

**PE3C3530**

**- xx**

**uu**

Unit of Measure:

cm = Centimeters

<blank> = Inches

Length

Base Number

Example: PE3C3530-12 = 12 inches long cable  
PE3C3530-100cm = 100 cm long cable

BNC Male to Straight Cut Lead Cable Using RG316-DS Coax from Pasternack Enterprises has same day shipment for domestic and International orders. Our RF, microwave and millimeter wave products maintain a 99.4% availability and are part of the broadest selection in the industry.

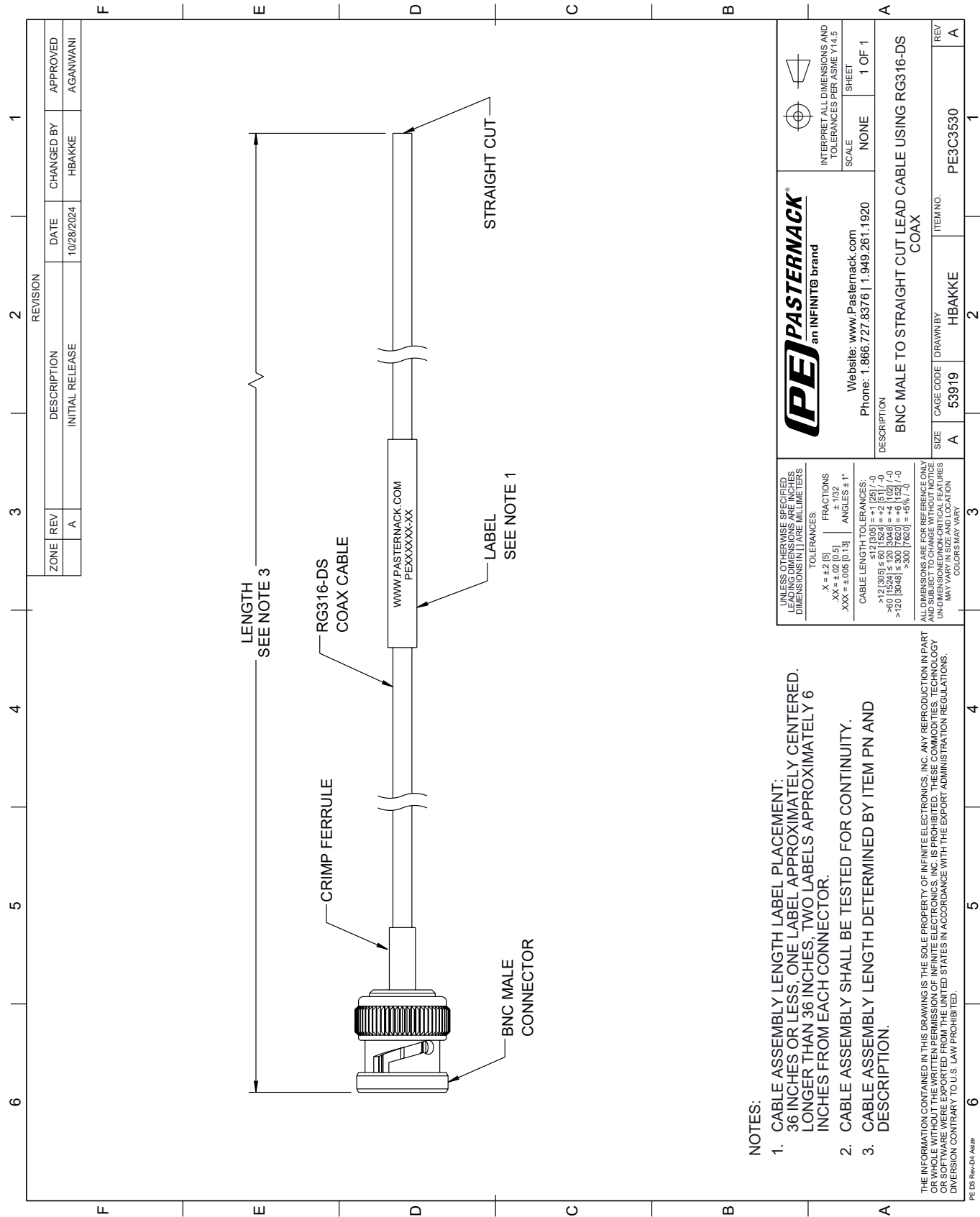
Click the following link (or enter part number in "SEARCH" on website) to obtain additional part information including price, inventory and certifications: [BNC Male to Straight Cut Lead Cable Using RG316-DS Coax PE3C3530](#)

URL: <https://www.pasternack.com/bnc-male-to-straight-cut-lead-cable-using-rg316-ds-pe3c3530-p.aspx>

The information contained within this document is accurate to the best of our knowledge and representative of the part described herein. It may be necessary to make modifications to the part and/or the documentation of the part in order to implement improvements. Pasternack Enterprises reserves the right to make such changes as required. Unless otherwise stated, all specifications are nominal. Pasternack Enterprises does not make any representation or warranty regarding the suitability of the part described herein for any particular purpose, and Pasternack Enterprises does not assume liability arising out of the use of any part or document.

PE3C3530 CAD Drawing

BNC Male to Straight Cut Lead Cable Using RG316-DS Coax



NOTES:

- 1. CABLE ASSEMBLY LENGTH LABEL PLACEMENT:  
36 INCHES OR LESS, ONE LABEL APPROXIMATELY CENTERED.  
LONGER THAN 36 INCHES, TWO LABELS APPROXIMATELY 6  
INCHES FROM EACH CONNECTOR.
- 2. CABLE ASSEMBLY SHALL BE TESTED FOR CONTINUITY.
- 3. CABLE ASSEMBLY LENGTH DETERMINED BY ITEM PN AND  
DESCRIPTION.

THE INFORMATION CONTAINED IN THIS DRAWING IS THE SOLE PROPERTY OF INFINITE ELECTRONICS, INC. ANY REPRODUCTION IN PART  
OR WHOLE WITHOUT THE WRITTEN PERMISSION OF INFINITE ELECTRONICS, INC. IS PROHIBITED. THESE COMMODITIES, TECHNOLOGY  
OR SOFTWARE WERE EXPORTED FROM THE UNITED STATES IN ACCORDANCE WITH THE EXPORT ADMINISTRATION REGULATIONS.  
DIVISION CONTRARY TO U.S. LAW PROHIBITED.

PE DS Rev-D4 Adda

UNLESS OTHERWISE SPECIFIED: ALL DIMENSIONS ARE IN INCHES DIMENSIONS IN [ ] ARE MILLIMETERS		<b>PE PASTERNAK</b> an INFINITE brand		INTERPRET ALL DIMENSIONS AND TOLERANCES PER ASME Y14.5	
TOLERANCES:		Website: <a href="http://www.Pasternack.com">www.Pasternack.com</a>		SCALE	
X = ±.2 [5]		Phone: 1.866.727.8376   1.949.261.1920		NONE	
.XX = ±.02 [0.5]		DESCRIPTION		SHEET	
.XXX = ±.005 [0.13]		BNC MALE TO STRAIGHT CUT LEAD CABLE USING RG316-DS COAX		1 OF 1	
FRACTIONS		SIZE		CAGE CODE	
± 1/32		A		53919	
ANGLES ± 1°		DRAWN BY		ITEM NO.	
CABLE LENGTH TOLERANCES:		HBAKKE		PE3C3530	
±.12 [3.05] = ±.12 [3.05] / -0		REV		A	
>.12 [3.05] ≤ .60 [15.24] = +.12 [3.05] / -0		A		1	
>.60 [15.24] ≤ 120 [3048] = +.12 [3.05] / -0		A		1	
>120 [3048] ≤ 300 [7620] = +.12 [3.05] / -0		A		1	
ALL DIMENSIONS ARE FOR REFERENCE ONLY UNLESS OTHERWISE SPECIFIED UNDIMENSIONED NON-CRITICAL FEATURES MAY VARY IN SIZE AND LOCATION COLORS MAY VARY		A		1	