

BNC Male Right Angle to N Female Bulkhead Cable Using RG316 Coax



PE3C3876

Configuration

- Connector 1: BNC Male Right Angle
- Connector 2: N Female Bulkhead
- Cable Type: RG316
- Coax Flex Type: Flexible

Features

- Max Frequency 2 GHz
- 69% Phase Velocity
- FEP Jacket



Applications

- General Purpose
- Laboratory Use

Description

Pasternack's PE3C3876 BNC male right angle to type N female bulkhead cable using RG316 coax is part of our full line of RF components available for same-day shipping. Pasternack's flexible RF cable assemblies are ideal for applications where tight bends and flexure are required. This Pasternack BNC to type N cable assembly has a male to female gender configuration with 50 ohm flexible RG316 coax. The PE3C3876 BNC male to type N female cable assembly operates to 2 GHz. The right angle BNC interface on the RG316 cable allows for easier connections in tight spaces. Our RF cable assembly with type N bulkhead interface allows designers to create external connections on their product enclosures, and can be used in a variety of other rack mount and panel mount applications.

Custom versions of most RF cable assemblies can be built and shipped same day. Custom cable assembly lengths can be obtained by specifying the desired length on the web site at time of order or by contacting a sales representative. Other available RF cable assembly value added services include connector orientation or clocking, heat shrink booting and custom labeling. RF testing can also be performed to document the electrical performance of your cable assembly.

Electrical Specifications

Description	Minimum	Typical	Maximum	Units
Frequency Range	DC		2	GHz
VSWR			1.5:1	
Velocity of Propagation		69		%
Jacket Spark			2,000	Vrms

Specifications by Frequency

BNC Male Right Angle to N Female
Bulkhead Cable Using RG316 Coax



PE3C3876

Part Number	Length	Description	F1	F2	F3	F4	F5	Units	Weight (lbs)
			Frequency		50	100	250	500	
PE3C3876	Custom Lengths Available	Insertion Loss (Typ.)	0.08	0.11	0.16	0.24	0.48	dB/ft	
			0.25	0.37	0.53	0.79	1.58	dB/m	
PE3C3876-12	12 inch	Insertion Loss (Typ.)	0.38	0.41	0.46	0.54	0.78	dB	0.145
PE3C3876-24	24 inch	Insertion Loss (Typ.)	0.45	0.52	0.62	0.78	1.26	dB	0.156
PE3C3876-36	36 inch	Insertion Loss (Typ.)	0.53	0.63	0.78	1.02	1.74	dB	0.166
PE3C3876-48	48 inch	Insertion Loss (Typ.)	0.6	0.74	0.94	1.26	2.22	dB	0.176
PE3C3876-72	72 inch	Insertion Loss (Typ.)	0.75	0.96	1.26	1.73	3.18	dB	0.196

The insertion loss data for the base model does not include loss due to the connectors. Each length includes insertion loss due to the connectors.

Loss due to Connector 1: 0.1 dB
 Loss due to Connector 2: 0.2 dB
 Base Weight: 0.145 pounds
 Additional Weight per Inch: 0.00084 pounds

Mechanical Specifications

Cable Assembly

Width/Diameter: 0.5 in [12.7 mm]
 Weight: 0.145 lbs [65.77 g]

Cable

Cable Type: RG316
 Impedance: 50 Ohms
 Inner Conductor Type: Stranded
 Inner Conductor Material and Plating: Copper Clad Steel, Silver
 Dielectric Type: PTFE
 Number of Shields: 1
 Shield Layer 1: Silver Plated Copper Braid
 Jacket Material: FEP, Tan
 Jacket Diameter: 0.098 in [2.49 mm]

BNC Male Right Angle to N Female Bulkhead Cable Using RG316 Coax



PE3C3876

Connectors

Description	Connector 1	Connector 2
Type	BNC Male Right Angle	N Female Bulkhead
Specification		MIL-STD-348A
Impedance	50 Ohms	50 Ohms
Configuration	Right Angle	Straight
Mating Cycles		100
Contact Material and Plating	Silver	Brass, Gold
Contact Plating Specification		30 µin minimum
Dielectric Type		PTFE
Body Material and Plating	Brass, Nickel	Brass, Nickel
Body Plating Specification		100 µin minimum

Environmental Specifications

Compliance Certifications (see [product page](#) for current document)

Plotted and Other Data

Notes:

BNC Male Right Angle to N Female Bulkhead Cable Using RG316 Coax

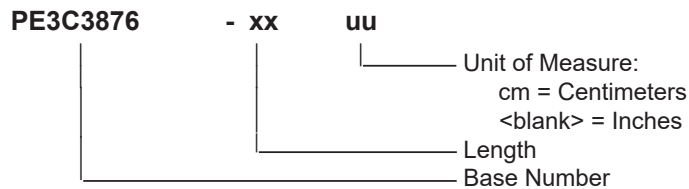


PE3C3876

Typical Performance Data

How to Order

Part Number Configuration:



Example: PE3C3876-12 = 12 inches long cable
PE3C3876-100cm = 100 cm long cable

BNC Male Right Angle to N Female Bulkhead Cable Using RG316 Coax from Pasternack Enterprises has same day shipment for domestic and International orders. Our RF, microwave and millimeter wave products maintain a 99.4% availability and are part of the broadest selection in the industry.

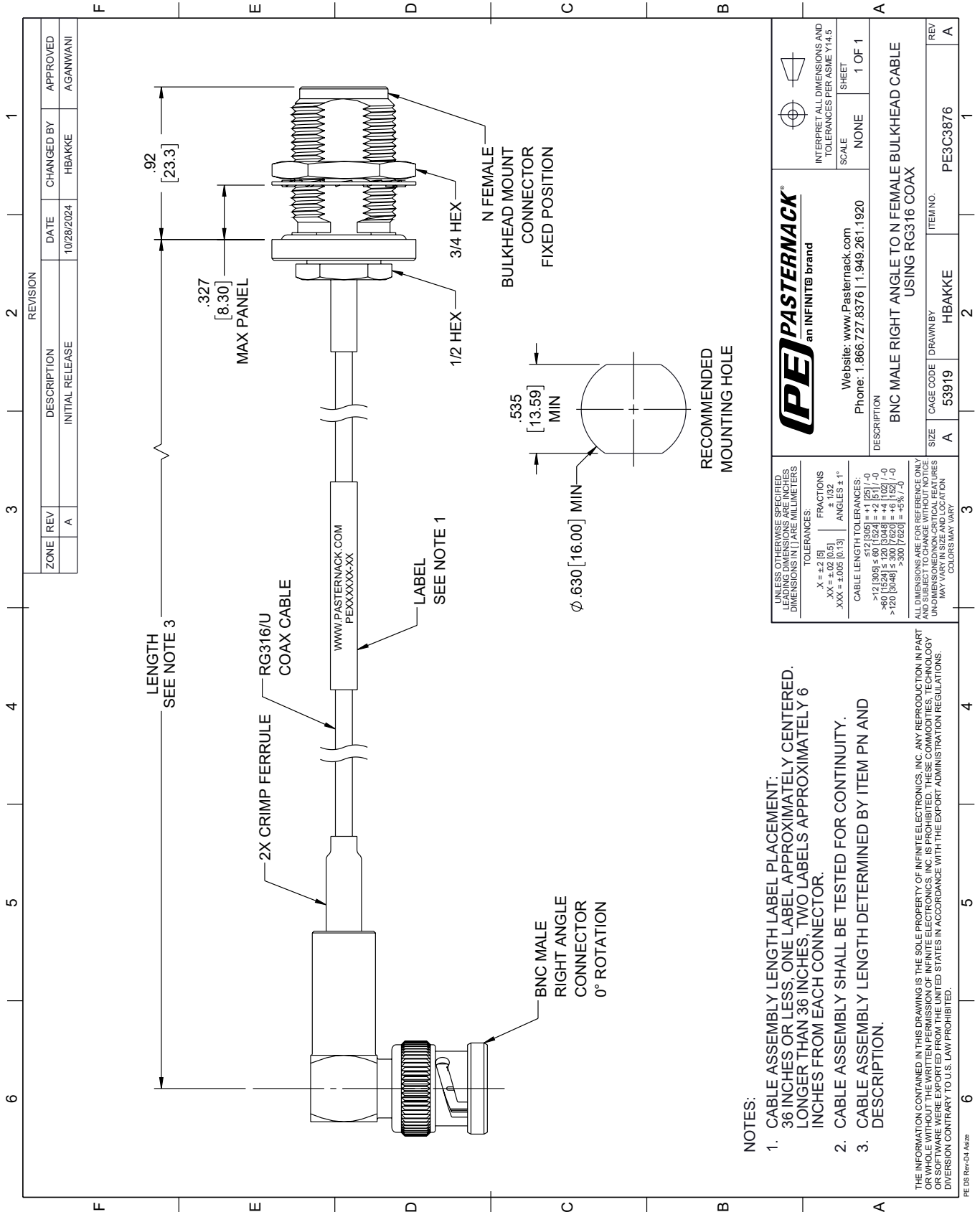
Click the following link (or enter part number in "SEARCH" on website) to obtain additional part information including price, inventory and certifications: [BNC Male Right Angle to N Female Bulkhead Cable Using RG316 Coax PE3C3876](#)

URL: <https://www.pasternack.com/bnc-male-right-angle-to-n-female-bulkhead-cable-using-rg316-pe3c3876-p.aspx>

The information contained within this document is accurate to the best of our knowledge and representative of the part described herein. It may be necessary to make modifications to the part and/or the documentation of the part in order to impliment improvements. Pasternack Enterprises reserves the right to make such changes as required. Unless otherwise stated, all specifications are nominal. Pasternack Enterprises does not make any representation or warranty regarding the suitability of the part described herein for any particular purpose, and Pasternack Enterprises does not assume liability arising out of the use of any part or document.

PE3C3876 CAD Drawing

BNC Male Right Angle to N Female Bulkhead Cable Using RG316 Coax



NOTES:

1. CABLE ASSEMBLY LENGTH LABEL PLACEMENT: 36 INCHES OR LESS, ONE LABEL APPROXIMATELY CENTERED. LONGER THAN 36 INCHES, TWO LABELS APPROXIMATELY 6 INCHES FROM EACH CONNECTOR.
2. CABLE ASSEMBLY SHALL BE TESTED FOR CONTINUITY.
3. CABLE ASSEMBLY LENGTH DETERMINED BY ITEM PN AND DESCRIPTION.

THE INFORMATION CONTAINED IN THIS DRAWING IS THE SOLE PROPERTY OF INFINITE ELECTRONICS, INC. ANY REPRODUCTION IN PART OR WHOLE WITHOUT THE WRITTEN PERMISSION OF INFINITE ELECTRONICS, INC. IS PROHIBITED. THESE COMMODITIES, TECHNOLOGY OR SOFTWARE WERE EXPORTED FROM THE UNITED STATES IN ACCORDANCE WITH THE EXPORT ADMINISTRATION REGULATIONS. DIVERSION CONTRARY TO U.S. LAW PROHIBITED.

UNLESS OTHERWISE SPECIFIED, LEADING DIMENSIONS ARE IN INCHES. DIMENSIONS IN [] ARE MILLIMETERS.

TOLERANCES:

X = ±.2 [5]	FRACTIONS ± 1/32
.XX = ±.02 [0.5]	ANGLES ± 1°
.XXX = ±.005 [0.13]	

CABLE LENGTH TOLERANCES:

>12 [305] ≤ 60 [1524] = ±.1 [2.5] / -0
>60 [1524] ≤ 120 [3048] = ±.4 [102] / -0
>120 [3048] ≤ 300 [7620] = ±.6 [15.2] / -0
>300 [7620] = ±.8 [20.3] / -0

ALL DIMENSIONS ARE FOR REFERENCE ONLY. UNDIMENSIONED/UNCLEAR CRITICAL FEATURES MAY VARY IN SIZE AND LOCATION. COLORS MAY VARY.

		INTERPRET ALL DIMENSIONS AND TOLERANCES PER ASME Y14.5	
		SCALE	NONE
Website: www.Pasternack.com Phone: 1.866.727.8376 1.949.261.1920		SHEET	1 OF 1
DESCRIPTION BNC MALE RIGHT ANGLE TO N FEMALE BULKHEAD CABLE USING RG316 COAX			
SIZE	A	CAGE CODE	53919
DRAWN BY	HBAKKE	ITEM NO.	PE3C3876
REV	A		