

BNC Female Bulkhead to SMA Male Cable Using PE-SR405FL Coax, LF Solder



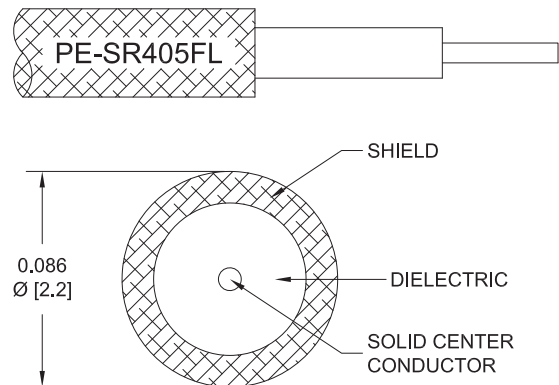
PE3C4277LF

Configuration

- Connector 1: BNC Female Bulkhead
- Connector 2: SMA Male
- Cable Type: PE-SR405FL
- Coax Flex Type: Formable

Features

- 69.5% Phase Velocity



Applications

- General Purpose
- Laboratory Use

Description

Pasternack's PE3C4277LF BNC female bulkhead to SMA male cable using PE-SR405FL coax is part of our full line of RF components available for same-day shipping. Pasternack's formable RF cable assemblies provide an alternative to costly pre-formed semi-rigid assemblies since they are hand formable. This Pasternack BNC to SMA cable assembly has a female to male gender configuration with 50 ohm formable PE-SR405FL coax. Our RF cable assembly with BNC bulkhead interface allows designers to create external connections on their product enclosures, and can be used in a variety of other rack mount and panel mount applications.

Custom versions of most RF cable assemblies can be built and shipped same day. Custom cable assembly lengths can be obtained by specifying the desired length on the web site at time of order or by contacting a sales representative. Other available RF cable assembly value added services include connector orientation or clocking, heat shrink booting and custom labeling. RF testing can also be performed to document the electrical performance of your cable assembly.

Electrical Specifications

Description	Minimum	Typical	Maximum	Units
Velocity of Propagation		69.5		%
Capacitance		29 [95.14]		pF/ft [pF/m]
DC Resistance Inner Conductor		65.7 [215.55]		Ohms/1000ft [Ohms/Km]
DC Resistance Outer Conductor		10.2 [33.46]		Ohms/1000ft [Ohms/Km]

Mechanical Specifications

Cable Assembly

Weight 0.067 lbs [30.39 g]

Cable

Cable Type PE-SR405FL
Impedance 50 Ohms

BNC Female Bulkhead to SMA Male Cable Using PE-SR405FL Coax, LF Solder



PE3C4277LF

Inner Conductor Type	Solid
Inner Conductor Material and Plating	Copper Clad Steel, Silver
Dielectric Type	PTFE
Number of Shields	1
Outer Conductor 1 Material and Plating	Copper, Tin
Repeated Minimum Bend Radius	0.78 in [19.81 mm]

Connectors

Description	Connector 1	Connector 2
Type	BNC Female Bulkhead	SMA Male
Impedance	50 Ohms	50 Ohms
Configuration	Straight	Straight
Contact Material and Plating		Brass, Gold over Nickel
Dielectric Type		PTFE
Body Material and Plating	Brass, Nickel	Brass, Gold over Nickel
Coupling Nut Material and Plating		Passivated Stainless Steel
Hex Size		5/16 inch
Torque		8 in-lbs 0.9 Nm

Environmental Specifications

Compliance Certifications (see [product page](#) for current document)

Plotted and Other Data

Notes:

BNC Female Bulkhead to SMA Male Cable Using PE-SR405FL Coax, LF Solder



PE3C4277LF

Typical Performance Data

How to Order

Part Number Configuration:

PE3C4277LF - xx uu

Unit of Measure:
cm = Centimeters
<blank> = Inches

Length

Base Number

Example: PE3C4277LF-12 = 12 inches long cable
PE3C4277LF-100cm = 100 cm long cable

BNC Female Bulkhead to SMA Male Cable Using PE-SR405FL Coax, LF Solder from Pasternack Enterprises has same day shipment for domestic and International orders. Our RF, microwave and millimeter wave products maintain a 99.4% availability and are part of the broadest selection in the industry.

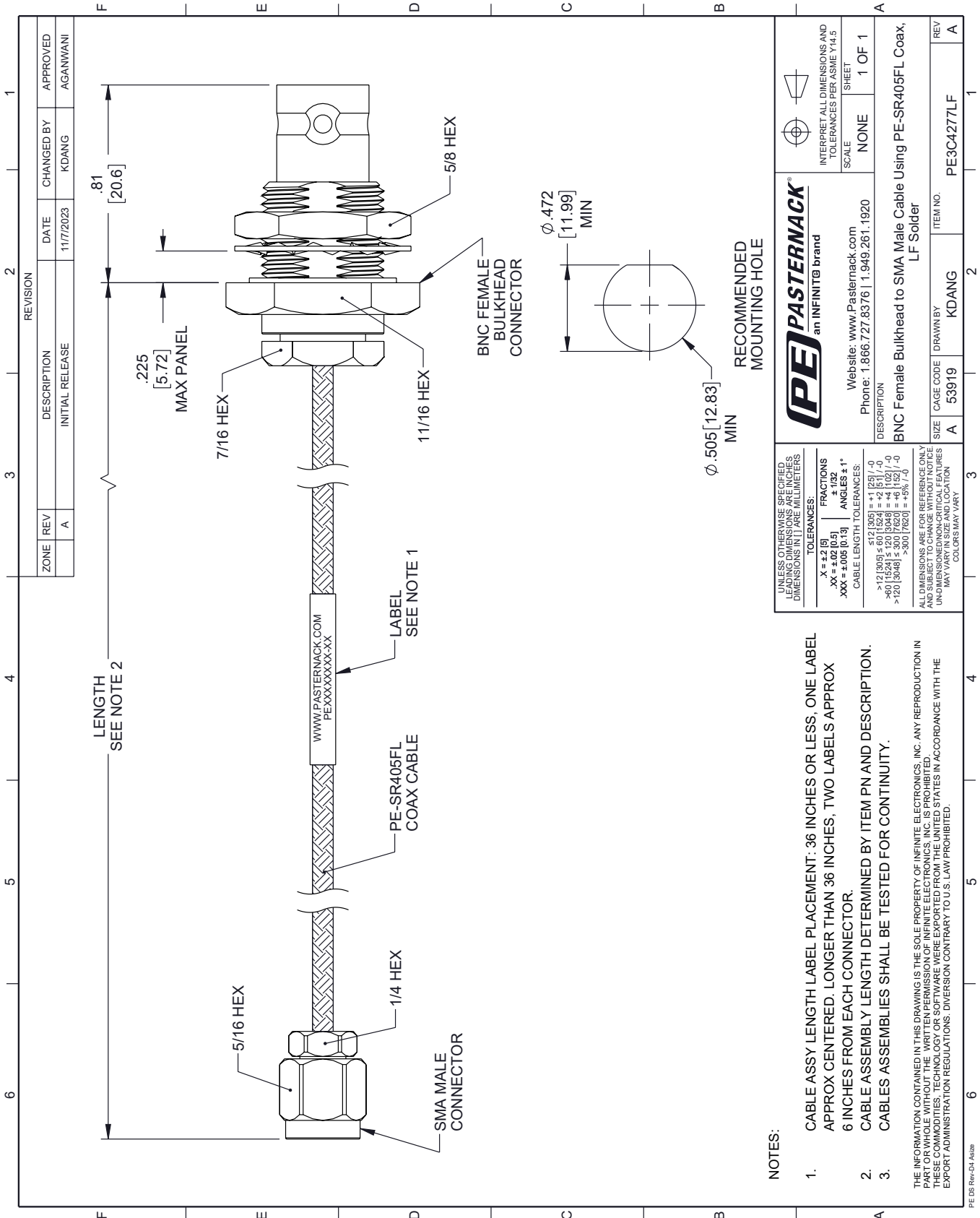
Click the following link (or enter part number in "SEARCH" on website) to obtain additional part information including price, inventory and certifications: [BNC Female Bulkhead to SMA Male Cable Using PE-SR405FL Coax, LF Solder PE3C4277LF](#)

URL: <https://www.pasternack.com/bnc-female-bulkhead-to-sma-male-cable-using-pe-sr405fl-lf-solder-pe3c4277lf-p.aspx>

The information contained within this document is accurate to the best of our knowledge and representative of the part described herein. It may be necessary to make modifications to the part and/or the documentation of the part in order to implement improvements. Pasternack Enterprises reserves the right to make such changes as required. Unless otherwise stated, all specifications are nominal. Pasternack Enterprises does not make any representation or warranty regarding the suitability of the part described herein for any particular purpose, and Pasternack Enterprises does not assume liability arising out of the use of any part or document.

PE3C4277LF CAD Drawing

BNC Female Bulkhead to SMA Male Cable Using PE-SR405FL Coax, LF Solder



REVISION		DATE	CHANGED BY	APPROVED
ZONE	REV			
	A	11/7/2023	KDANG	AGANWANI
DESCRIPTION				
INITIAL RELEASE				

UNLESS OTHERWISE SPECIFIED LEADING DIMENSIONS ARE IN INCHES DIMENSIONS IN [] ARE MILLIMETERS

TOLERANCES:	FRACTIONS	ANGLES
.X = ±.2 [5]	± 1/32	± 1°
.XX = ±.02 [0.5]		
.XXX = ±.005 [0.13]		

CABLE LENGTH TOLERANCES:

<12 [305]	±.1 [2.5]
>12 [305] ≤ 60 [1524]	±.2 [5.1]
>60 [1524] ≤ 120 [3048]	±.4 [10.2]
>120 [3048] ≤ 300 [7620]	±.5 [12.7]
>300 [7620]	±.5% [1.3]

ALL DIMENSIONS ARE FOR REFERENCE ONLY UNLESS OTHERWISE SPECIFIED. DIMENSIONS IN NON-CRITICAL FEATURES MAY VARY IN SIZE AND LOCATION. COLORS MAY VARY.

INTERPRET ALL DIMENSIONS AND TOLERANCES PER ASME Y14.5

SCALE: NONE
SHEET: 1 OF 1

Website: www.Pasternack.com
Phone: 1.866.727.8376 | 1.949.261.1920

DESCRIPTION: BNC Female Bulkhead to SMA Male Cable Using PE-SR405FL Coax, LF Solder

SIZE	CAGE CODE	DRAWN BY	ITEM NO.	REV
A	53919	KDANG	PE3C4277LF	A

- NOTES:**
- CABLE ASSY LENGTH LABEL PLACEMENT: .36 INCHES OR LESS, ONE LABEL APPROX CENTERED. LONGER THAN .36 INCHES, TWO LABELS APPROX .6 INCHES FROM EACH CONNECTOR.
 - CABLE ASSEMBLY LENGTH DETERMINED BY ITEM PN AND DESCRIPTION.
 - CABLE ASSEMBLIES SHALL BE TESTED FOR CONTINUITY.
- THE INFORMATION CONTAINED IN THIS DRAWING IS THE SOLE PROPERTY OF INFINITE ELECTRONICS, INC. ANY REPRODUCTION IN PART OR WHOLE WITHOUT THE WRITTEN PERMISSION OF INFINITE ELECTRONICS, INC. IS PROHIBITED. THESE COMMODITIES, TECHNOLOGY OR SOFTWARE WERE EXPORTED FROM THE UNITED STATES IN ACCORDANCE WITH THE EXPORT ADMINISTRATION REGULATIONS. DIVERSION CONTRARY TO U.S. LAW PROHIBITED.
- PE DS Rev-D4 As20