

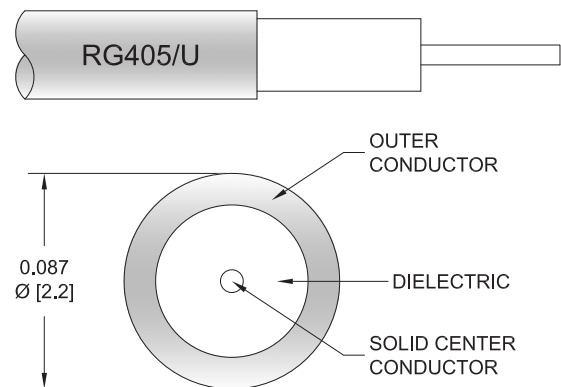
SMA Female to Trimmed Lead Cable Using RG405 Coax



PE3C4579

Configuration

- Connector 1: SMA Female
- Connector 2: Trimmed Lead
- Cable Type: RG405
- Coax Flex Type: Semi-Rigid



Applications

- General Purpose
- Laboratory Use

Description

Pasternack's PE3C4579 50 ohm SMA female to trimmed lead cable using RG405 coax is part of our full line of RF components available for same-day shipping. Pasternack's semi-rigid RF cable assemblies are ideal for high performance applications and can be formed, using proper tooling, to the routing pattern required.

Custom versions of most RF cable assemblies can be built and shipped same day. Custom cable assembly lengths can be obtained by specifying the desired length on the web site at time of order or by contacting a sales representative. Other available RF cable assembly value added services include connector orientation or clocking, heat shrink booting and custom labeling. RF testing can also be performed to document the electrical performance of your cable assembly.

Specifications by Frequency

Part Number	Length	Description	F1	F2	F3	F4	F5	Units	Weight (lbs)
			Frequency						
PE3C4579	Custom Lengths Available	Insertion Loss (Typ.)	0.11	0.22	0.32	0.48	0.896	dB/ft	
			0.37	0.73	1.04	1.57	2.94	dB/m	
PE3C4579-6	6 inch	Insertion Loss (Typ.)	0.36	0.41	0.46	0.54	0.75	dB	0.013
PE3C4579-12	12 inch	Insertion Loss (Typ.)	0.41	0.52	0.62	0.78	1.2	dB	0.019
PE3C4579-18	18 inch	Insertion Loss (Typ.)	0.47	0.63	0.78	1.02	1.65	dB	0.026
PE3C4579-24	24 inch	Insertion Loss (Typ.)	0.52	0.74	0.94	1.26	2.1	dB	0.033
PE3C4579-36	36 inch	Insertion Loss (Typ.)	0.63	0.96	1.25	1.74	2.99	dB	0.046

The insertion loss data for the base model does not include loss due to the connectors. Each length includes insertion loss due to the connectors.

Loss due to Connector 1:	0.2 dB
Loss due to Connector 2:	0.1 dB
Base Weight:	0.019 pounds
Additional Weight per Inch:	0.00109 pounds

SMA Female to Trimmed Lead Cable Using RG405 Coax



PE3C4579

Mechanical Specifications

Cable Assembly

Width/Diameter	0.5 in [12.7 mm]
Weight	0.019 lbs [8.62 g]

Cable

Cable Type	RG405
Impedance	50 Ohms
Inner Conductor Type	Solid
Inner Conductor Material and Plating	Copper Clad Steel, Silver
Dielectric Type	PTFE
Number of Shields	1
Outer Conductor 1 Material and Plating	Copper
Jacket Material	Tan
Repeated Minimum Bend Radius	0.05 in [1.27 mm]

Connectors

Description	Connector 1	Connector 2
Type	SMA Female	Trimmed Lead
Specification	MIL-STD-348	
Impedance	50 Ohms	0 Ohms
Configuration	Straight	Straight
Contact Material and Plating	Gold	
Contact Plating Specification	MIL-G-45204	
Dielectric Type	PTFE	
Body Material and Plating	Stainless Steel, Gold	
Body Plating Specification	MIL-G-45204	

Environmental Specifications

Compliance Certifications (see [product page](#) for current document)

Plotted and Other Data

Notes:

SMA Female to Trimmed Lead Cable Using RG405 Coax



PE3C4579

Typical Performance Data

How to Order

Part Number Configuration:

PE3C4579

- **xx**

uu

Unit of Measure:

cm = Centimeters

<blank> = Inches

Length

Base Number

Example: PE3C4579-12 = 12 inches long cable
PE3C4579-100cm = 100 cm long cable

SMA Female to Trimmed Lead Cable Using RG405 Coax from Pasternack Enterprises has same day shipment for domestic and International orders. Our RF, microwave and millimeter wave products maintain a 99.4% availability and are part of the broadest selection in the industry.

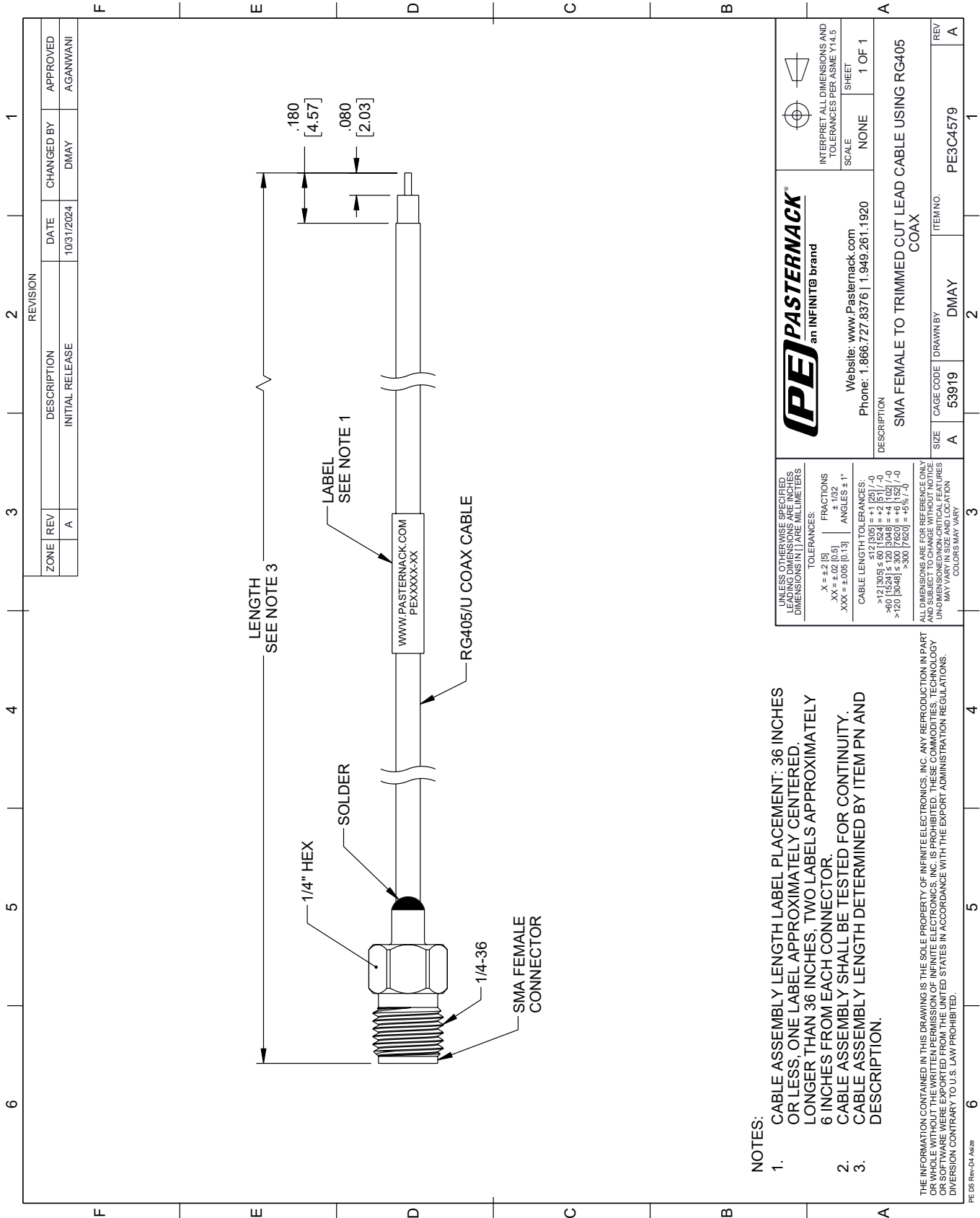
Click the following link (or enter part number in "SEARCH" on website) to obtain additional part information including price, inventory and certifications: [SMA Female to Trimmed Lead Cable Using RG405 Coax PE3C4579](#)

URL: <https://www.pasternack.com/sma-female-to-trimmed-lead-cable-using-rg405-pe3c4579-p.aspx>

The information contained within this document is accurate to the best of our knowledge and representative of the part described herein. It may be necessary to make modifications to the part and/or the documentation of the part in order to implement improvements. Pasternack Enterprises reserves the right to make such changes as required. Unless otherwise stated, all specifications are nominal. Pasternack Enterprises does not make any representation or warranty regarding the suitability of the part described herein for any particular purpose, and Pasternack Enterprises does not assume liability arising out of the use of any part or document.

PE3C4579 CAD Drawing

SMA Female to Trimmed Lead Cable Using RG405 Coax



NOTES:

1. CABLE ASSEMBLY LENGTH LABEL PLACEMENT: 36 INCHES OR LESS, ONE LABEL APPROXIMATELY CENTERED. LONGER THAN 36 INCHES, TWO LABELS APPROXIMATELY 6 INCHES FROM EACH CONNECTOR.
2. CABLE ASSEMBLY SHALL BE TESTED FOR CONTINUITY.
3. CABLE ASSEMBLY LENGTH DETERMINED BY ITEM PN AND DESCRIPTION.

THE INFORMATION CONTAINED IN THIS DRAWING IS THE SOLE PROPERTY OF INFINITE ELECTRONICS, INC. ANY REPRODUCTION IN PART OR WHOLE WITHOUT THE WRITTEN PERMISSION OF INFINITE ELECTRONICS, INC. IS PROHIBITED. THESE COMMODITIES, TECHNOLOGY OR SERVICES WERE EXPORTED FROM THE UNITED STATES IN ACCORDANCE WITH THE EXPORT ADMINISTRATION REGULATIONS. DIVERSION CONTRARY TO U.S. LAW PROHIBITED.

UNLESS OTHERWISE SPECIFIED, LEADING DIMENSIONS ARE IN INCHES. DIMENSIONS IN [] ARE MILLIMETERS.

TOLERANCES:
 .X = ±.2 [5] FRACTIONS ± 1/32
 .XX = ±.02 [0.5] ANGLES ± 1°
 .XXX = ±.005 [0.13]

CABLE LENGTH TOLERANCES:
 <12 [305] ≤ 60 [1524] = ±.1 [2.5] / -0
 >60 [1524] ≤ 120 [3048] = ±.4 [102] / -0
 >120 [3048] ≤ 300 [7620] = ±.6 [15.2] / -0

ALL DIMENSIONS ARE FOR REFERENCE ONLY. UNDIMENSIONED/NON-CRITICAL FEATURES MAY VARY IN SIZE AND LOCATION. COLORS MAY VARY.

		INTERPRET ALL DIMENSIONS AND TOLERANCES PER ASME Y14.5	
Website: www.Pasternack.com Phone: 1.866.727.8376 1.949.261.1920		SCALE: NONE	SHEET: 1 OF 1
SMA FEMALE TO TRIMMED CUT LEAD CABLE USING RG405 COAX			
DESCRIPTION: SMA FEMALE TO TRIMMED CUT LEAD CABLE USING RG405 COAX	SIZE: A	CAGE CODE: 53919	DRAWN BY: DMAY
ITEM NO.: PE3C4579	REV: A		

ZONE	REV	DESCRIPTION	DATE	CHANGED BY	APPROVED
A		INITIAL RELEASE	10/31/2024	DMAY	AGANWANI