

Plenum SMA Male to SMA Male Low Loss  
Cable 36 Inch Length Using LMR<sup>®</sup>-195-LLPX  
Coax with Times Microwave Components



**PE3C5065-36**

**Configuration**

- Connector 1: SMA Male
- Connector 2: SMA Male
- Cable Type: LMR<sup>®</sup>-195-LLPX
- Coax Flex Type: Flexible

**Features**

- Max Frequency 8 GHz
- Shielding Effectivity > 90 dB
- 80% Phase Velocity
- Double Shielded
- PVC (FR) Jacket

**Applications**

- General Purpose
- Laboratory Use

**Description**

Pasternack's PE3C5065-36 SMA male to SMA male 36 inch cable using LMR<sup>®</sup>-195-LLPX coax is part of our full line of RF components available for same-day shipping. Pasternack's flexible RF cable assemblies are ideal for applications where tight bends and flexure are required. This Pasternack SMA to SMA cable assembly has a male to male gender configuration with 50 ohm flexible LMR<sup>®</sup>-195-LLPX coax. The PE3C5065-36 SMA male to SMA male cable assembly operates to 8 GHz. The double shielding of this Pasternack cable assembly provides excellent shielding effectiveness of better than 90 dB.

Custom versions of most RF cable assemblies can be built and shipped same day. Custom cable assembly lengths can be obtained by specifying the desired length on the web site at time of order or by contacting a sales representative. Other available RF cable assembly value added services include connector orientation or clocking, heat shrink booting and custom labeling. RF testing can also be performed to document the electrical performance of your cable assembly.

**Electrical Specifications**

Description	Minimum	Typical	Maximum	Units
Frequency Range	DC		8	GHz
VSWR			1.4:1	
Velocity of Propagation		80		%
RF Shielding	90			dB
Group Delay		1.27 [4.17]		ns/ft [ns/m]
Capacitance		25.4 [83.33]		pF/ft [pF/m]
Inductance		0.064 [0.21]		uH/ft [uH/m]
DC Resistance Inner Conductor		7.6 [24.93]		Ohms/1000ft [Ohms/Km]
DC Resistance Outer Conductor		4.9 [16.08]		Ohms/1000ft [Ohms/Km]
Jacket Spark			3,000	Vrms

**Specifications by Frequency**

Plenum SMA Male to SMA Male Low Loss  
Cable 36 Inch Length Using LMR<sup>®</sup>-195-LLPX  
Coax with Times Microwave Components



**PE3C5065-36**

Part Number	Length	Description	F1	F2	F3	F4	F5	Units	Weight (lbs)
			Frequency		500	1000	2000	4000	
PE3C5065	Custom Lengths Available	Insertion Loss (Typ.)	0.081	0.114	0.162	0.228	0.357	dB/ft	
			0.27	0.38	0.54	0.75	1.18	dB/m	
PE3C5065-12	12 In	Insertion Loss (Typ.)	0.59	0.62	0.67	0.73	0.86	dB	0.065
PE3C5065-24	24 In	Insertion Loss (Typ.)	0.67	0.73	0.83	0.96	1.22	dB	0.092
PE3C5065-36	36 In	Insertion Loss (Typ.)	0.75	0.85	0.99	1.19	1.58	dB	0.119
PE3C5065-48	48 In	Insertion Loss (Typ.)	0.83	0.96	1.15	1.42	1.93	dB	0.146
PE3C5065-60	60 In	Insertion Loss (Typ.)	0.91	1.07	1.31	1.64	2.29	dB	0.173

The insertion loss data for the base model does not include loss due to the connectors. Each length includes insertion loss due to the connectors.

Loss due to Connector 1:	0.25 dB
Loss due to Connector 2:	0.25 dB
Base Weight:	0.065 pounds
Additional Weight per Inch:	0.00225 pounds

**Mechanical Specifications**

**Cable Assembly**

Length	36 in [914.4 mm]
Width/Diameter	.5 in [12.7 mm]
Weight	0.119 lbs [53.98 g]

**Cable**

Cable Type	LMR <sup>®</sup> -195-LLPX
Impedance	50 Ohms
Inner Conductor Type	Solid
Inner Conductor Material and Plating	Copper
Dielectric Type	PTFE (LD)
Number of Shields	2
Shield Layer 1	Aluminum Tape
Shield Layer 2	Tinned Copper Braid
Jacket Material	PVC (FR), Orange
Jacket Diameter	0.195 in [4.95 mm]
One Time Minimum Bend Radius	0.5 in [12.7 mm]
Repeated Minimum Bend Radius	2 in [50.8 mm]
Bending Moment	0.1 lbs-ft [0.14 N-m]
Flat Plate Crush	10 lbs/in [0.18 Kg/mm]
Tensile Strength	40 lbs [18.14 Kg]

Plenum SMA Male to SMA Male Low Loss  
Cable 36 Inch Length Using LMR<sup>®</sup>-195-LLPX  
Coax with Times Microwave Components



## PE3C5065-36

### Connectors

Description	Connector 1	Connector 2
Type	SMA Male	SMA Male
Impedance	50 Ohms	50 Ohms
Configuration	Straight	Straight
Contact Material and Plating	Brass, Gold	Brass, Gold
Contact Plating Specification	ASTM B488	ASTM B488
Dielectric Type	Teflon	Teflon
Body Material and Plating	Passivated Stainless Steel	Passivated Stainless Steel
Coupling Nut Material and Plating	Passivated Stainless Steel	Passivated Stainless Steel
Hex Size	5/16 Inch	5/16 Inch

### Environmental Specifications

**Compliance Certifications** (see [product page](#) for current document)

### Plotted and Other Data

Notes:

Plenum SMA Male to SMA Male Low Loss  
Cable 36 Inch Length Using LMR<sup>®</sup>-195-LLPX  
Coax with Times Microwave Components

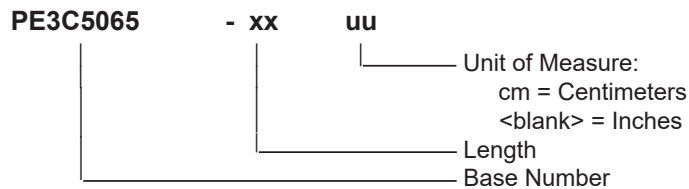


**PE3C5065-36**

**Typical Performance Data**

**How to Order**

Part Number Configuration:



Example: PE3C5065-12 = 12 inches long cable  
PE3C5065-100cm = 100 cm long cable

Plenum SMA Male to SMA Male Low Loss Cable 36 Inch Length Using LMR<sup>®</sup>-195-LLPX Coax with Times Microwave Components from Pasternack Enterprises has same day shipment for domestic and International orders. Our RF, microwave and millimeter wave products maintain a 99.4% availability and are part of the broadest selection in the industry.

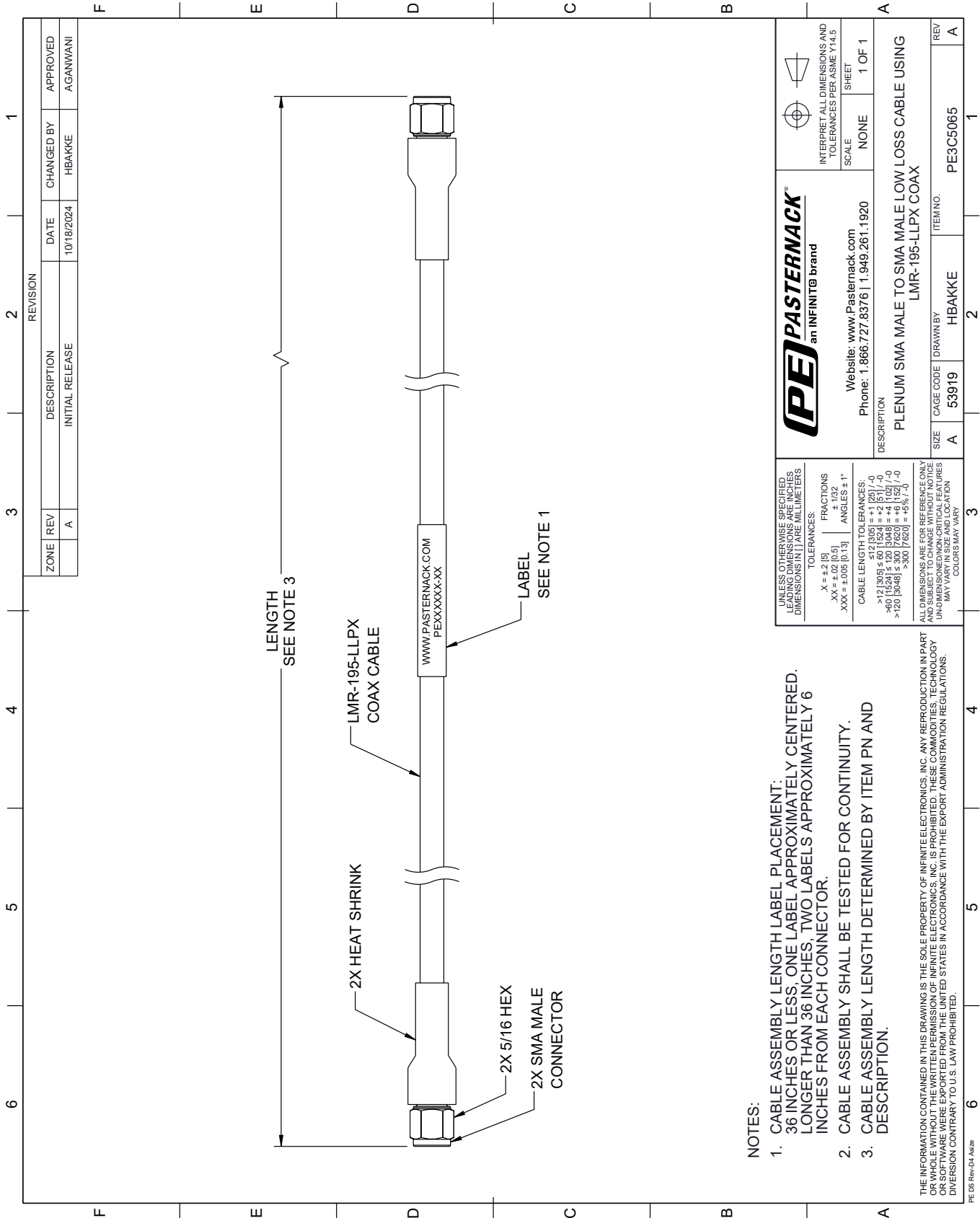
Click the following link (or enter part number in "SEARCH" on website) to obtain additional part information including price, inventory and certifications: [Plenum SMA Male to SMA Male Low Loss Cable 36 Inch Length Using LMR<sup>®</sup>-195-LLPX Coax with Times Microwave Components PE3C5065-36](https://www.pasternack.com/plenum-sma-male-to-sma-male-low-loss-cable-36-inch-length-using-lmr-195-llpx-pe3c5065-36-p.aspx)

URL: <https://www.pasternack.com/plenum-sma-male-to-sma-male-low-loss-cable-36-inch-length-using-lmr-195-llpx-pe3c5065-36-p.aspx>

The information contained within this document is accurate to the best of our knowledge and representative of the part described herein. It may be necessary to make modifications to the part and/or the documentation of the part in order to impliment improvements. Pasternack Enterprises reserves the right to make such changes as required. Unless otherwise stated, all specifications are nominal. Pasternack Enterprises does not make any representation or warranty regarding the suitability of the part described herein for any particular purpose, and Pasternack Enterprises does not assume liability arising out of the use of any part or document.

# PE3C5065-36 CAD Drawing

Plenum SMA Male to SMA Male Low Loss Cable 36 Inch Length Using LMR®-195-LLPX Coax with Times Microwave Components



**NOTES:**

1. CABLE ASSEMBLY LENGTH LABEL PLACEMENT: 36 INCHES OR LESS, ONE LABEL APPROXIMATELY CENTERED. LONGER THAN 36 INCHES, TWO LABELS APPROXIMATELY 6 INCHES FROM EACH CONNECTOR.
2. CABLE ASSEMBLY SHALL BE TESTED FOR CONTINUITY.
3. CABLE ASSEMBLY LENGTH DETERMINED BY ITEM PN AND DESCRIPTION.

THE INFORMATION CONTAINED IN THIS DRAWING IS THE SOLE PROPERTY OF INFINITE ELECTRONICS, INC. ANY REPRODUCTION IN PART OR WHOLE WITHOUT THE WRITTEN PERMISSION OF INFINITE ELECTRONICS, INC. IS PROHIBITED. THESE COMMODITIES, TECHNOLOGY OR SERVICES ARE EXPORTED FROM THE UNITED STATES IN ACCORDANCE WITH THE EXPORT ADMINISTRATION REGULATIONS. DIVERSION CONTRARY TO U.S. LAW PROHIBITED.

UNLESS OTHERWISE SPECIFIED, LEADING DIMENSIONS ARE IN INCHES AND OTHER DIMENSIONS ARE IN MILLIMETERS

TOLERANCES:  
 .X = ±.2 [5]      FRACTIONS ± 1/32  
 .XX = ±.02 [0.5]      ANGLES ± 1°  
 .XXX = ±.005 [0.13]

CABLE LENGTH TOLERANCES:  
 >12 [305] ≤ 60 [1524] = ±.1 [2.5] / -0  
 >60 [1524] ≤ 120 [3048] = ±.4 [102] / -0  
 >120 [3048] ≤ 300 [7620] = ±.6 [15.2] / -0

ALL DIMENSIONS ARE FOR REFERENCE ONLY. UNDIMENSIONED NON-CRITICAL FEATURES MAY VARY IN SIZE AND LOCATION. COLORS MAY VARY.

		INTERPRET ALL DIMENSIONS AND TOLERANCES PER ASME Y14.5 SCALE: NONE SHEET: 1 OF 1	
Website: <a href="http://www.Pasternack.com">www.Pasternack.com</a> Phone: 1.866.727.8376   1.949.261.1920			
DESCRIPTION: PLENUM SMA MALE TO SMA MALE LOW LOSS CABLE USING LMR-195-LLPX COAX			
SIZE: A	CAGE CODE: 53919	DRAWN BY: HBAKKE	ITEM NO.: PE3C5065
REV: A			REV: A