

SMA Male to SMP Female Right Angle Cable Using PE-047SR Coax

TECHNICAL DATA SHEET

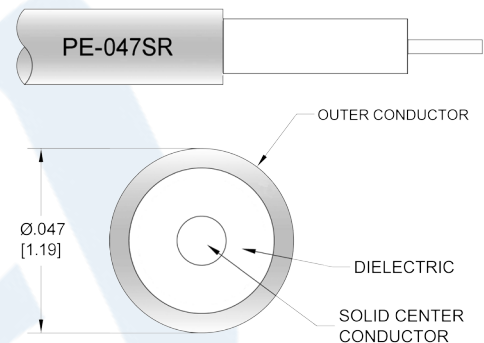
PE3C5105

Configuration

- Connector 1: SMA Male
- Connector 2: SMP Female Right Angle
- Cable Type: PE-047SR
- Coax Flex Type: Semi-Rigid

Features

- Max Frequency 10 GHz



Applications

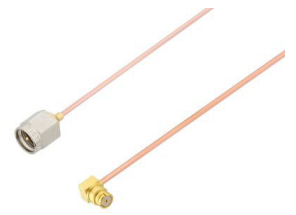
- General Purpose
- Laboratory Use

Description

Pasternack's PE3C5105 SMA male to SMP female right angle cable using PE-047SR coax is part of our full line of RF components available for same-day shipping. Pasternack's semi-rigid RF cable assemblies are ideal for high performance applications and can be formed, using proper tooling, to the routing pattern required. This Pasternack SMA to SMP cable assembly has a male to female gender configuration with 50 ohm semi-rigid PE-047SR coax. The PE3C5105 SMA male to SMP female cable assembly operates to 10 GHz. The right angle SMP interface on the PE-047SR cable allows for easier connections in tight spaces.

Custom versions of most RF cable assemblies can be built and shipped same day. Custom cable assembly lengths can be obtained by specifying the desired length on the web site at time of order or by contacting a sales representative. Other available RF cable assembly value added services include connector orientation or clocking, heat shrink booting and custom labeling. RF testing can also be performed to document the electrical performance of your cable assembly.

Click the following link (or enter part number in "SEARCH" on website) to obtain additional part information including price, inventory and certifications: [SMA Male to SMP Female Right Angle Cable Using PE-047SR Coax PE3C5105](#)



SMA Male to SMP Female Right Angle Cable Using PE-047SR Coax

TECHNICAL DATA SHEET

PE3C5105

Electrical Specifications

Description	Minimum	Typical	Maximum	Units
Frequency Range	DC		10	GHz
VSWR			1.4:1	

Specifications by Frequency

Part Number	Length	Description	F1	F2	F3	F4	Units	Weight (lbs)
			1000	2000	4000	10000	MHz	
PE3C5105	Custom Lengths Available	Insertion Loss (Typ.)	0.4	0.5	0.64	1.3	dB/ft	
			1.32	1.65	2.09	4.27	dB/m	
PE3C5105-3	3 inch	Insertion Loss (Typ.)	0.34	0.37	0.4	0.57	dB	0.01
PE3C5105-6	6 inch	Insertion Loss (Typ.)	0.44	0.49	0.56	0.89	dB	0.011
PE3C5105-12	12 inch	Insertion Loss (Typ.)	0.64	0.74	0.88	1.54	dB	0.013
PE3C5105-18	18 inch	Insertion Loss (Typ.)	0.84	0.99	1.2	2.19	dB	0.016
PE3C5105-60	60 inch	Insertion Loss (Typ.)	2.24	2.74	3.42	6.74	dB	0.03

The insertion loss data for the base model does not include loss due to the connectors. Each length includes insertion loss due to the connectors.

Loss due to Connector 1:	$0.04 \cdot \sqrt{f(\text{GHz})}$ dB
Loss due to Connector 2:	0.2 dB
Base Weight:	0.013 pounds
Additional Weight per Inch:	0.00034 pounds

Mechanical Specifications

Cable Assembly

Weight 0.013 lbs [5.9 g]

Cable

Cable Type	PE-047SR
Impedance	50 Ohms
Inner Conductor Type	Solid
Inner Conductor Material and Plating	Copper Clad Steel, Silver
Dielectric Type	PTFE
Number of Shields	1
Outer Conductor Material and Plating	Copper

Repeated Minimum Bend Radius 0.05 in [1.27 mm]

Click the following link (or enter part number in "SEARCH" on website) to obtain additional part information including price, inventory and certifications: [SMA Male to SMP Female Right Angle Cable Using PE-047SR Coax PE3C5105](#)



SMA Male to SMP Female Right Angle
Cable Using PE-047SR Coax

TECHNICAL DATA SHEET

PE3C5105

Connectors

Description	Connector 1	Connector 2
Type	SMA Male Threaded	SMP Female Right Angle Push-On
Specification	MIL-STD-348	MIL-STD-348
Impedance	50 Ohms	50 Ohms
Mating Cycles	500	
Contact Material and Plating	Beryllium Copper, Gold over Nickel	Beryllium Copper, Gold
Contact Plating Specification	50 µin minimum	MIL-G-45204
Dielectric Type	PTFE	PTFE
Body Material and Plating	Brass, Gold over Nickel	Beryllium Copper, Gold
Body Plating Specification	50 µin minimum	MIL-G-45204
Coupling Nut Material and Plating	Brass, Nickel	
Coupling Nut Plating Specification	50 µin minimum	
Hex Size	5/16 inch	
Torque	7 in-lbs [0.79 Nm]	

Environmental Specifications

Temperature

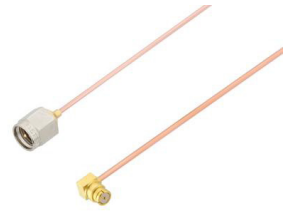
Operating Range -55 to +100 deg C

Compliance Certifications (see [product page](#) for current document)

Plotted and Other Data

Notes:

Click the following link (or enter part number in "SEARCH" on website) to obtain additional part information including price, inventory and certifications: [SMA Male to SMP Female Right Angle Cable Using PE-047SR Coax PE3C5105](#)



SMA Male to SMP Female Right Angle Cable Using PE-047SR Coax

TECHNICAL DATA SHEET

PE3C5105

How to Order

Part Number Configuration:

PE3C5105

- **xx**

uu

Unit of Measure:
cm = Centimeters
<blank> = Inches
Length
Base Number

Example: PE3C5105-12 = 12 inches long cable
PE3C5105-100cm = 100 cm long cable

SMA Male to SMP Female Right Angle Cable Using PE-047SR Coax from Pasternack Enterprises has same day shipment for domestic and International orders. Our RF, microwave and millimeter wave products maintain a 99.4% availability and are part of the broadest selection in the industry.

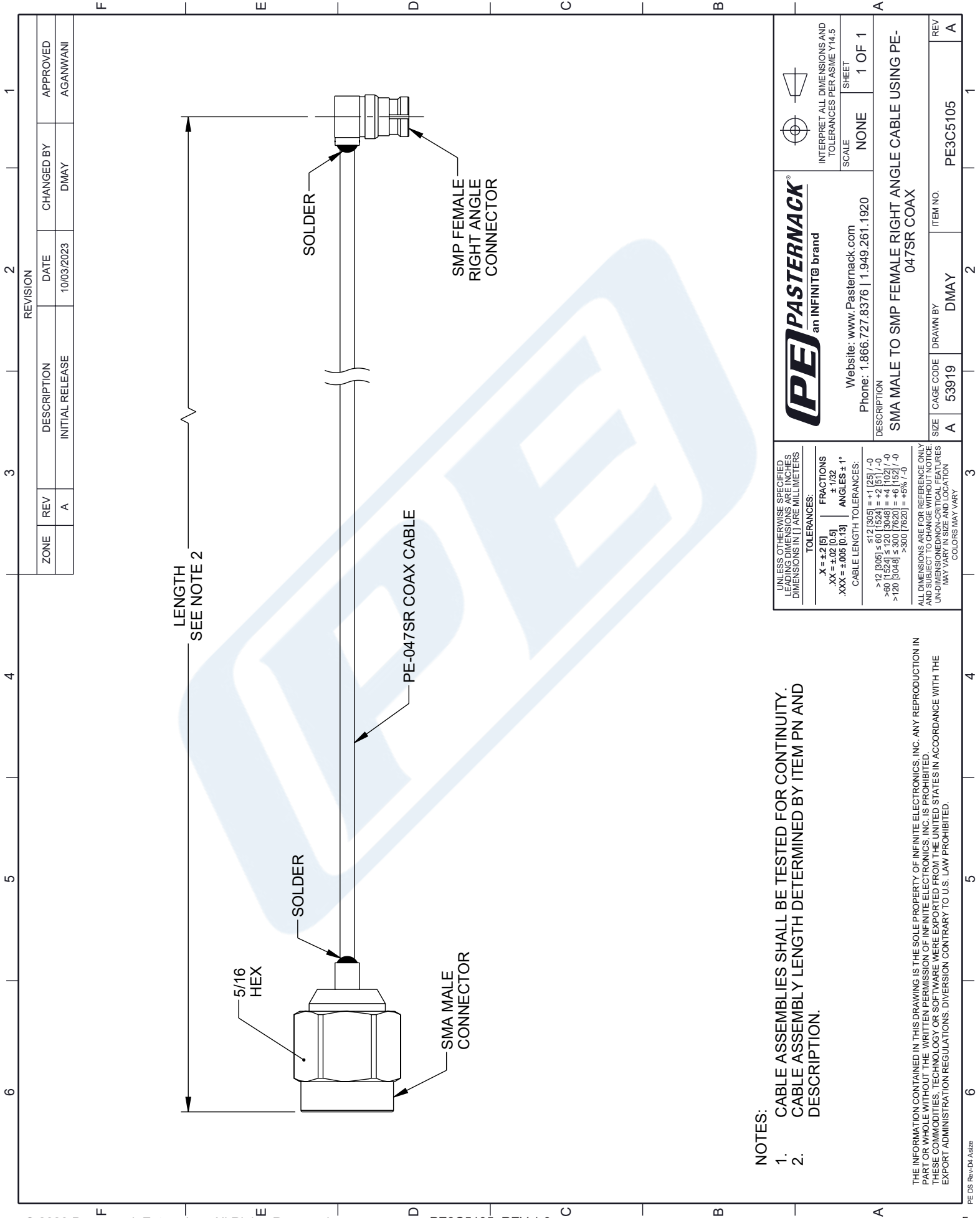
Click the following link (or enter part number in "SEARCH" on website) to obtain additional part information including price, inventory and certifications: [SMA Male to SMP Female Right Angle Cable Using PE-047SR Coax PE3C5105](#)

URL: <https://www.pasternack.com/sma-male-to-smp-female-cable-using-pe-047sr-pe3c5105-p.aspx>

The information contained in this document is accurate to the best of our knowledge and representative of the part described herein. It may be necessary to make modifications to the part and/or the documentation of the part, in order to implement improvements. Pasternack reserves the right to make such changes as required. Unless otherwise stated, all specifications are nominal. Pasternack does not make any representation or warranty regarding the suitability of the part described herein for any particular purpose, and Pasternack does not assume any liability arising out of the use of any part or documentation.

PE3C5105 CAD Drawing

SMA Male to SMP Female Right Angle Cable Using PE-047SR Coax



LENGTH
SEE NOTE 2

SOLDER

SMP FEMALE
RIGHT ANGLE
CONNECTOR

PE-047SR COAX CABLE

SOLDER

5/16
HEX

SMA MALE
CONNECTOR

NOTES:

1. CABLE ASSEMBLIES SHALL BE TESTED FOR CONTINUITY.
2. CABLE ASSEMBLY LENGTH DETERMINED BY ITEM PN AND DESCRIPTION.

THE INFORMATION CONTAINED IN THIS DRAWING IS THE SOLE PROPERTY OF INFINITE ELECTRONICS, INC. ANY REPRODUCTION IN PART OR WHOLE WITHOUT THE WRITTEN PERMISSION OF INFINITE ELECTRONICS, INC. IS PROHIBITED. THESE COMMODITIES, TECHNOLOGY OR SOFTWARE WERE EXPORTED FROM THE UNITED STATES IN ACCORDANCE WITH THE EXPORT ADMINISTRATION REGULATIONS. DIVERSION CONTRARY TO U.S. LAW PROHIBITED.

UNLESS OTHERWISE SPECIFIED, LEADING DIMENSIONS ARE IN INCHES. DIMENSIONS IN [] ARE MILLIMETERS.	
TOLERANCES:	
.X = ±.2 [5]	FRACTIONS ± 1/32
.XX = ±.02 [0.5]	ANGLES ± 1°
.XXX = ±.005 [0.13]	CABLE LENGTH TOLERANCES:
	<12 [305] = ±.1 [25] / -0
	>12 [305] ≤ 60 [1524] = ±.2 [5] / -0
	>60 [1524] ≤ 120 [3048] = ±.4 [10.2] / -0
	>120 [3048] ≤ 300 [7620] = ±.6 [15.2] / -0
	>300 [7620] = ±.5% / -0
ALL DIMENSIONS ARE FOR REFERENCE ONLY. UNDIMENSIONED NON-CRITICAL FEATURES MAY VARY IN SIZE AND LOCATION. COLORS MAY VARY.	



Website: www.Pasternack.com
Phone: 1.866.727.8376 | 1.949.261.1920

INTERPRET ALL DIMENSIONS AND TOLERANCES PER ASME Y14.5
SCALE NONE
SHEET 1 OF 1

DESCRIPTION
SMA MALE TO SMP FEMALE RIGHT ANGLE CABLE USING PE-047SR COAX

SIZE A	CAGE CODE 53919	DRAWN BY DMAY	ITEM NO. PE3C5105	REV A
--------	-----------------	---------------	-------------------	-------