

SMA Female Bulkhead to SMB Plug Cable Using RG316 Coax



PE3C6028

Configuration

- Connector 1: SMA Female Bulkhead
- Connector 2: SMB Plug
- Cable Type: RG316
- Coax Flex Type: Flexible

Features

- Max Frequency 3 GHz
- 69% Phase Velocity
- FEP Jacket



Applications

- General Purpose
- Laboratory Use

Description

Pasternack's PE3C6028 SMA female bulkhead to SMB plug cable using RG316 coax is part of our full line of RF components available for same-day shipping. Pasternack's flexible RF cable assemblies are ideal for applications where tight bends and flexure are required. This Pasternack SMA to SMB cable assembly has a female to plug gender configuration with 50 ohm flexible RG316 coax. The PE3C6028 SMA female to SMB plug cable assembly operates to 3 GHz. Our RF cable assembly with SMA bulkhead interface allows designers to create external connections on their product enclosures, and can be used in a variety of other rack mount and panel mount applications.

Custom versions of most RF cable assemblies can be built and shipped same day. Custom cable assembly lengths can be obtained by specifying the desired length on the web site at time of order or by contacting a sales representative. Other available RF cable assembly value added services include connector orientation or clocking, heat shrink booting and custom labeling. RF testing can also be performed to document the electrical performance of your cable assembly.

Electrical Specifications

Description	Minimum	Typical	Maximum	Units
Frequency Range	DC		3	GHz
VSWR			1.4:1	
Velocity of Propagation		69		%
Capacitance		29.4 [96.46]		pF/ft [pF/m]
Jacket Spark			2,000	Vrms

Specifications by Frequency

SMA Female Bulkhead to SMB Plug
Cable Using RG316 Coax



PE3C6028

Part Number	Length	Description	F1	F2	F3	F4	F5	Units	Weight (lbs)
			Frequency					MHz	
PE3C6028	Custom Lengths Available	Insertion Loss (Typ.)	0.11	0.16	0.24	0.38	0.58	dB/ft	
			0.37	0.53	0.79	1.25	1.91	dB/m	
PE3C6028-12	12 inch	Insertion Loss (Typ.)	0.31	0.36	0.44	0.58	0.78	dB	0.034
PE3C6028-24	24 inch	Insertion Loss (Typ.)	0.42	0.52	0.68	0.96	1.36	dB	0.045
PE3C6028-36	36 inch	Insertion Loss (Typ.)	0.53	0.68	0.92	1.34	1.94	dB	0.055
PE3C6028-48	48 inch	Insertion Loss (Typ.)	0.64	0.84	1.16	1.72	2.52	dB	0.065
PE3C6028-72	72 inch	Insertion Loss (Typ.)	0.86	1.16	1.63	2.48	3.68	dB	0.085

The insertion loss data for the base model does not include loss due to the connectors. Each length includes insertion loss due to the connectors.

Loss due to Connector 1: 0.1 dB
 Loss due to Connector 2: 0.1 dB
 Base Weight: 0.034 pounds
 Additional Weight per Inch: 0.00084 pounds

Mechanical Specifications

Cable Assembly

Width/Diameter: 0.5 in [12.7 mm]
 Weight: 0.034 lbs [15.42 g]

Cable

Cable Type: RG316
 Impedance: 50 Ohms
 Inner Conductor Type: Stranded
 Inner Conductor Material and Plating: Copper Clad Steel, Silver
 Dielectric Type: PTFE
 Number of Shields: 1
 Shield Layer 1: Silver Plated Copper Braid
 Jacket Material: FEP, Tan
 Jacket Diameter: 0.102 in [2.59 mm]

SMA Female Bulkhead to SMB Plug Cable Using RG316 Coax



PE3C6028

Connectors

Description	Connector 1	Connector 2
Type	SMA Female Bulkhead	SMB Plug
Specification		MIL-STD-348A
Impedance	50 Ohms	50 Ohms
Configuration	Straight	Straight
Contact Material and Plating	Beryllium Copper, Gold	Beryllium Copper, Gold
Contact Plating Specification		30 µin minimum
Dielectric Type	PTFE	PTFE
Outer Conductor Material and Plating	Brass, Gold	
Body Material and Plating	Brass, Gold	Brass, Nickel
Body Plating Specification		100 µin minimum
Coupling Nut Material and Plating		Brass, Nickel
Coupling Nut Plating Specification		100 µin minimum

Environmental Specifications

Operating Range Temperature -55 to +165 deg C

Compliance Certifications (see [product page](#) for current document)

Plotted and Other Data

Notes:

SMA Female Bulkhead to SMB Plug Cable Using RG316 Coax



PE3C6028

Typical Performance Data

How to Order

Part Number Configuration:

PE3C6028

- **xx**

uu

Unit of Measure:

cm = Centimeters

<blank> = Inches

Length

Base Number

Example: PE3C6028-12 = 12 inches long cable
PE3C6028-100cm = 100 cm long cable

SMA Female Bulkhead to SMB Plug Cable Using RG316 Coax from Pasternack Enterprises has same day shipment for domestic and International orders. Our RF, microwave and millimeter wave products maintain a 99.4% availability and are part of the broadest selection in the industry.

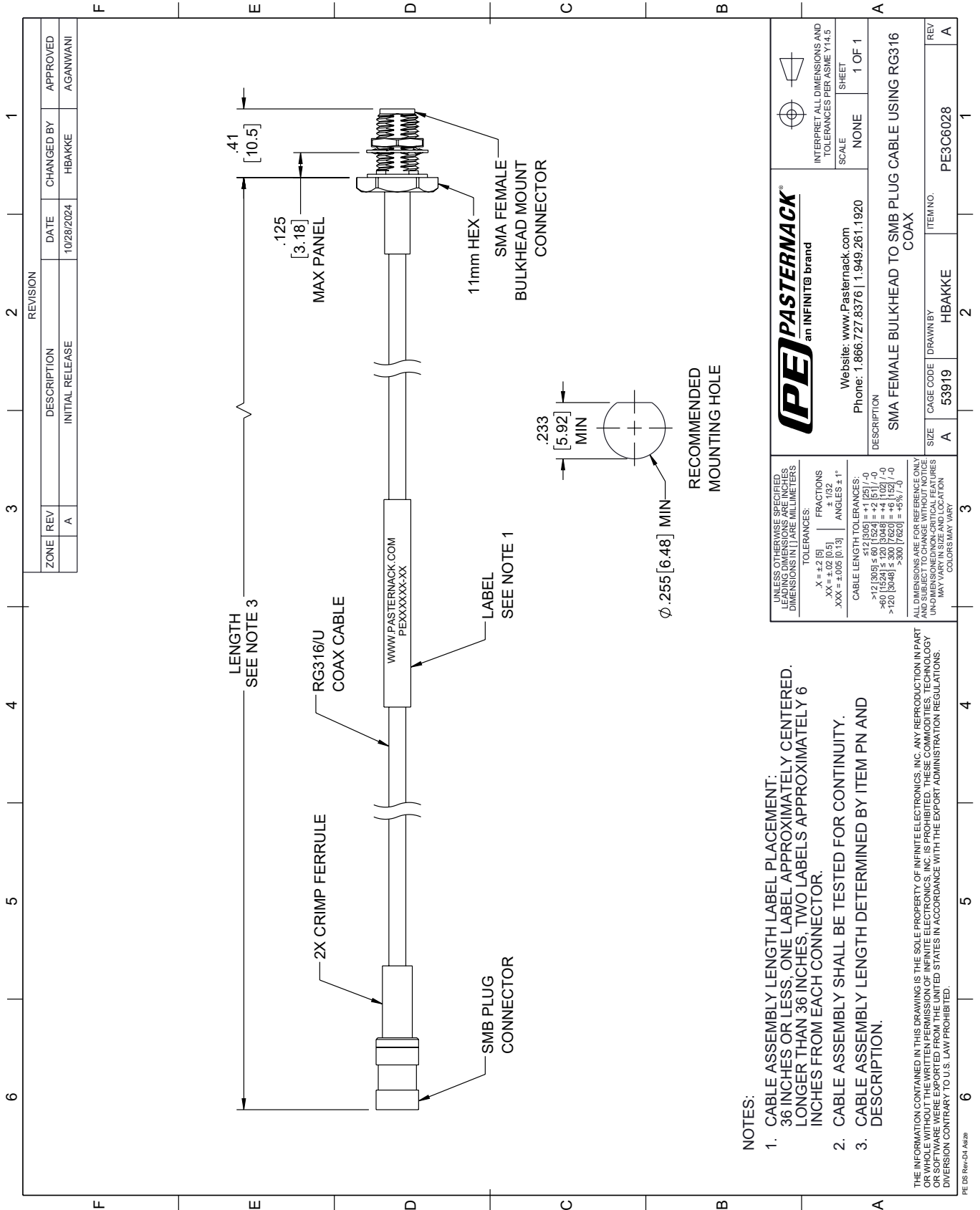
Click the following link (or enter part number in "SEARCH" on website) to obtain additional part information including price, inventory and certifications: [SMA Female Bulkhead to SMB Plug Cable Using RG316 Coax PE3C6028](https://www.pasternack.com/sma-female-bulkhead-to-smb-plug-cable-using-rg316-pe3c6028-p.aspx)

URL: <https://www.pasternack.com/sma-female-bulkhead-to-smb-plug-cable-using-rg316-pe3c6028-p.aspx>

The information contained within this document is accurate to the best of our knowledge and representative of the part described herein. It may be necessary to make modifications to the part and/or the documentation of the part in order to implement improvements. Pasternack Enterprises reserves the right to make such changes as required. Unless otherwise stated, all specifications are nominal. Pasternack Enterprises does not make any representation or warranty regarding the suitability of the part described herein for any particular purpose, and Pasternack Enterprises does not assume liability arising out of the use of any part or document.

PE3C6028 CAD Drawing

SMA Female Bulkhead to SMB Plug Cable Using RG316 Coax



NOTES:

1. CABLE ASSEMBLY LENGTH LABEL PLACEMENT: 36 INCHES OR LESS, ONE LABEL APPROXIMATELY CENTERED. LONGER THAN 36 INCHES, TWO LABELS APPROXIMATELY 6 INCHES FROM EACH CONNECTOR.
2. CABLE ASSEMBLY SHALL BE TESTED FOR CONTINUITY.
3. CABLE ASSEMBLY LENGTH DETERMINED BY ITEM PN AND DESCRIPTION.

THE INFORMATION CONTAINED IN THIS DRAWING IS THE SOLE PROPERTY OF INFINITE ELECTRONICS, INC. ANY REPRODUCTION IN PART OR WHOLE WITHOUT THE WRITTEN PERMISSION OF INFINITE ELECTRONICS, INC. IS PROHIBITED. THESE COMMODITIES, TECHNOLOGY OR SOFTWARE ARE EXPORTED FROM THE UNITED STATES IN ACCORDANCE WITH THE EXPORT ADMINISTRATION REGULATIONS. DIVERSION CONTRARY TO U.S. LAW PROHIBITED.

UNLESS OTHERWISE SPECIFIED, LEADING DIMENSIONS ARE IN INCHES. DIMENSIONS IN [] ARE MILLIMETERS.

TOLERANCES:
 .X = ±.2 [5] FRACTIONS ±.132
 .XX = ±.02 [0.5] ANGLES ± 1°
 .XXX = ±.005 [0.13]

CABLE LENGTH TOLERANCES:
 >12 [305] ≤ 60 [1524] = ±.1 [25] / -0
 >60 [1524] ≤ 120 [3048] = ±.4 [102] / -0
 >120 [3048] ≤ 300 [7620] = ±.6 [15] / -0

ALL DIMENSIONS ARE FOR REFERENCE ONLY. DIMENSIONS OF UNDESIGNATED FEATURES MAY VARY IN SIZE AND LOCATION. COLORS MAY VARY.

		INTERPRET ALL DIMENSIONS AND TOLERANCES PER ASME Y14.5 SCALE: NONE SHEET: 1 OF 1
		Website: www.Pasternack.com Phone: 1.866.727.8376 1.949.261.1920
DESCRIPTION: SMA FEMALE BULKHEAD TO SMB PLUG CABLE USING RG316 COAX		
SIZE: A	CAGE CODE: 53919	DRAWN BY: HBAKKE
ITEM NO.: PE3C6028		REV: A