

Plenum 4.1/9.5 Male Right Angle to N Male
Right Angle Low PIM Cable 100 cm Length Using SPP-
250-LLPL Coax Using Times Microwave Parts



PE3C6234-100CM

Configuration

- Connector 1: 4.1/9.5 Mini DIN Male Right Angle TC-SPP250-4195M-RALP
- Connector 2: N Male Right Angle TC-SPP250-NM-RA-LP
- Cable Type: SPP-250-LLPL
- Coax Flex Type: Corrugated

Features

- Max Frequency 3 GHz
- Low PIM: -160 dBc Max
- Shielding Effectivity > 100 dB
- 76% Phase Velocity
- FEP Jacket
- 100% Tested with PIM Test Results Marked on Cable
- UL910 Plenum Rated Cable
- Lightweight and Extremely Flexible
- Low Loss with Excellent VSWR
- IP67 (when mated)
- Using Times Microwave Components



Applications

- General Purpose
- Laboratory Use
- Low PIM Applications
- Distributed Antenna Systems (DAS)
- Plenum Installations
- Multi-Carrier Communication Systems
- PIM Testing

Description

Pasternack's PE3C6234-100CM 4.1/9.5 Mini DIN male right angle to type N male right angle 100 cm cable using SPP-250-LLPL coax is part of our full line of RF components available for same-day shipping. Pasternack's corrugated RF cable assemblies are ideal for applications where durability and high power are needed. This Pasternack 4.1/9.5 Mini DIN to type N cable assembly has a male to male gender configuration with 50 ohm corrugated SPP-250-LLPL coax. The PE3C6234-100CM 4.1/9.5 Mini DIN male to type N male cable assembly operates to 3 GHz. Our low PIM design also offers excellent passive intermodulation performance with PIM levels better than -160 dBc. The right angle 4.1/9.5 Mini DIN and right angle type N interfaces on the SPP-250-LLPL cable allow for easier connections in tight spaces. Times Microwave cable is used in each assembly and TMS components are used to form connections with the super flexible low PIM cable. These cable assemblies are expertly built to satisfy your specific need with high quality Times Microwave Systems manufactured parts.

Custom versions of most RF cable assemblies can be built and shipped same day. Custom cable assembly lengths can be obtained by specifying the desired length on the web site at time of order or by contacting a sales representative. Other available RF cable assembly value added services include connector orientation or clocking, heat shrink booting and custom labeling. RF testing can also be performed to document the electrical performance of your cable assembly.

Electrical Specifications

| Description | Minimum | Typical | Maximum | Units |
|-----------------|---------|---------|---------|-------|
| Frequency Range | DC | | 3 | GHz |

Plenum 4.1/9.5 Male Right Angle to N Male
Right Angle Low PIM Cable 100 cm Length Using SPP-
250-LLPL Coax Using Times Microwave Parts



PE3C6234-100CM

Electrical Specifications

| Description | Minimum | Typical | Maximum | Units |
|---|---------|--------------|---------|-----------------------|
| VSWR | | | 1.4:1 | |
| Velocity of Propagation | | 76 | | % |
| RF Shielding | 100 | | | dB |
| Passive Intermodulation IM3 (2x43dBm Tones) at 850 MHz or 1900 MHz | | -165 | -160 | dBc |
| Capacitance | | 27 [88.58] | | pF/ft [pF/m] |
| Inductance | | 0.067 [0.22] | | uH/ft [uH/m] |
| DC Resistance Inner Conductor | | 3 [9.84] | | Ohms/1000ft [Ohms/Km] |

Specifications by Frequency

| Description | F1 | F2 | F3 | F4 | F5 | Units |
|-----------------------|------|------|------|------|------|-------|
| Frequency | 0.45 | 0.7 | 1 | 2 | 3 | GHz |
| Insertion Loss (Max.) | 0.3 | 0.33 | 0.36 | 0.45 | 0.51 | dB |

Electrical Specification Notes:

PIM test results vary between cables

The Insertion Loss data above is based on the performance specifications of the coax used in this assembly. The Insertion Loss includes an estimated insertion loss of 0.05 dB for the 4.3-10 male connector and 0.12 dB for the N male connector.

Mechanical Specifications

Cable Assembly

Width/Diameter 1 in [25.4 mm]
Weight 0.52 lbs [235.87 g]

Cable

Cable Type SPP-250-LLPL
Impedance 50 Ohms
Inner Conductor Type Solid
Inner Conductor Material and Plating Copper
Dielectric Type PTFE
Number of Shields 1
Shield Layer 1 Helically Corrugated Copper Tube
Outer Conductor 1 Material and Plating Copper
Outer Conductor Diameter 0.25 in [6.35 mm]
Jacket Material FEP, Blue
Jacket Diameter 0.28 in [7.11 mm]
One Time Minimum Bend Radius 1.25 in [31.75 mm]
Bending Moment 0.8 lbs-ft [1.08 N-m]

Plenum 4.1/9.5 Male Right Angle to N Male
Right Angle Low PIM Cable 100 cm Length Using SPP-
250-LLPL Coax Using Times Microwave Parts



PE3C6234-100CM

Connectors

| Description | Connector 1 | Connector 2 |
|------------------------------------|-----------------------------------|-------------------------|
| Type | 4.1/9.5 Mini DIN Male Right Angle | N Male Right Angle |
| Impedance | 50 Ohms | 50 Ohms |
| Configuration | Right Angle | Right Angle |
| Contact Material and Plating | Brass, Silver | Phosphor Bronze, Silver |
| Contact Plating Specification | 200 μ in | 196 μ in |
| Dielectric Type | PTFE | PTFE |
| Body Material and Plating | Brass, Nickel | Brass, Tri-Metal |
| Body Plating Specification | 200 μ in | 118 μ in |
| Coupling Nut Material and Plating | Brass, Nickel | Brass, Tri-Metal |
| Coupling Nut Plating Specification | 200 μ in | 118 μ in |
| Torque | 106.21 in-lbs 12 Nm | 10 in-lbs 1.13 Nm |

Environmental Specifications

| | |
|-----------------------------|-------------------|
| Operating Range Temperature | -55 to +200 deg C |
| Storage Range Temperature | -55 to +200 deg C |
| Plenum Rating | UL910 |

Compliance Certifications (see [product page](#) for current document)

Plotted and Other Data

Notes:
Values at 25°C, sea level.

Plenum 4.1/9.5 Male Right Angle to N Male
Right Angle Low PIM Cable 100 cm Length Using SPP-
250-LLPL Coax Using Times Microwave Parts



PE3C6234-100CM

Typical Performance Data



Plenum 4.1/9.5 Male Right Angle to N Male
Right Angle Low PIM Cable 100 cm Length Using SPP-
250-LLPL Coax Using Times Microwave Parts



PE3C6234-100CM

How to Order

Part Number Configuration:

PE3C6234

- **xx**

uu

Unit of Measure:
cm = Centimeters
<blank> = Inches
Length
Base Number

Example: PE3C6234-12 = 12 inches long cable
PE3C6234-100cm = 100 cm long cable

Plenum 4.1/9.5 Male Right Angle to N Male Right Angle Low PIM Cable 100 cm Length Using SPP-250-LLPL Coax Using Times Microwave Parts from Pasternack Enterprises has same day shipment for domestic and International orders. Our RF, microwave and millimeter wave products maintain a 99.4% availability and are part of the broadest selection in the industry.

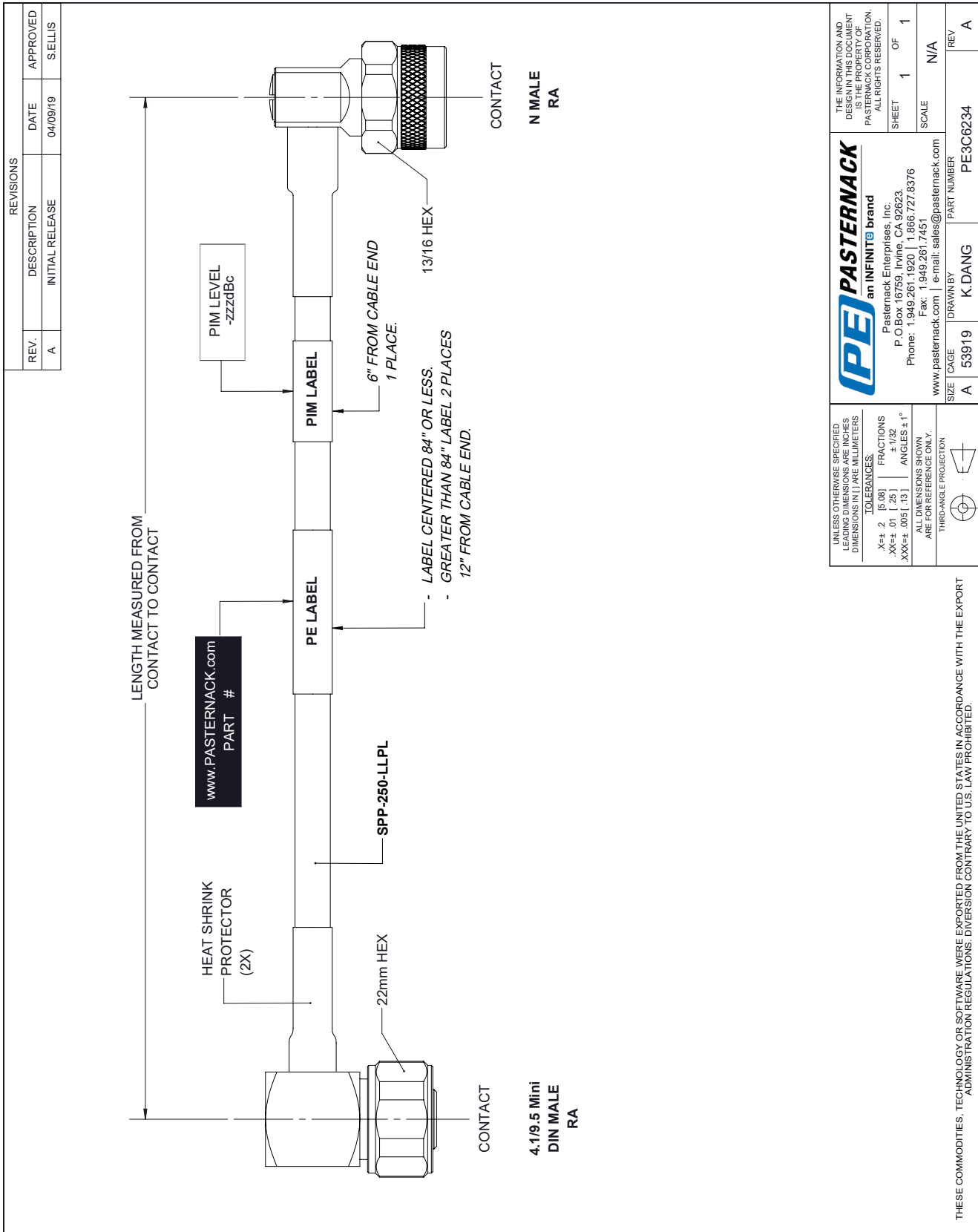
Click the following link (or enter part number in "SEARCH" on website) to obtain additional part information including price, inventory and certifications: [Plenum 4.1/9.5 Male Right Angle to N Male Right Angle Low PIM Cable 100 cm Length Using SPP-250-LLPL Coax Using Times Microwave Parts PE3C6234-100CM](#)

URL: <https://www.pasternack.com/4.1-9.5-mini-din-male-n-male-spp250llpl-cable-assembly-pe3c6234-100cm-p.aspx>

The information contained within this document is accurate to the best of our knowledge and representative of the part described herein. It may be necessary to make modifications to the part and/or the documentation of the part in order to implement improvements. Pasternack Enterprises reserves the right to make such changes as required. Unless otherwise stated, all specifications are nominal. Pasternack Enterprises does not make any representation or warranty regarding the suitability of the part described herein for any particular purpose, and Pasternack Enterprises does not assume liability arising out of the use of any part or document.

PE3C6234-100CM CAD Drawing

Plenum 4.1/9.5 Male Right Angle to N Male Right Angle Low PIM Cable 100 cm Length Using SPP-250-LLPL Coax Using Times Microwave Parts



| REVISIONS | | | |
|-----------|-----------------|----------|----------|
| REV. | DESCRIPTION | DATE | APPROVED |
| A | INITIAL RELEASE | 04/09/19 | SELLIS |

UNLESS OTHERWISE SPECIFIED LEADING DIMENSIONS ARE INCHES DIMENSIONS IN [] ARE MILLIMETERS

TOLERANCES:

| | | |
|-----------|--------|-------------|
| .X±.2 | [5.08] | FRACTIONS |
| .XX±.01 | [.25] | ± 1/32 |
| .XXX±.005 | [.13] | ANGLES ± 1° |

ALL DIMENSIONS SHOWN ARE FOR REFERENCE ONLY.

THIRD-ANGLE PROJECTION

THE INFORMATION AND DESIGN IN THIS DOCUMENT IS THE PROPERTY OF PASTERNAK CORPORATION. ALL RIGHTS RESERVED.

SHEET 1 OF 1

SCALE N/A

www.pasternack.com | e-mail: sales@pasternack.com

| | | | | |
|------|-------|----------|-------------|-----|
| SIZE | CAGE | DRAWN BY | PART NUMBER | REV |
| A | 53919 | K.DANG | PE3C6234 | A |

THESE COMMODITIES, TECHNOLOGY OR SOFTWARE WERE EXPORTED FROM THE UNITED STATES IN ACCORDANCE WITH THE EXPORT ADMINISTRATION REGULATIONS. DIVERSION CONTRARY TO U.S. LAW PROHIBITED.

T-Rev.B