

Plenum 4.1/9.5 Male Right Angle to N Male  
Right Angle Low PIM Cable 36 Inch Length Using SPP-  
250-LLPL Coax Using Times Microwave Parts



**PE3C6234-36**

**Configuration**

- Connector 1: 4.1/9.5 Mini DIN Male Right Angle TC-SPP250-4195M-RALP
- Connector 2: N Male Right Angle TC-SPP250-NM-RA-LP
- Cable Type: SPP-250-LLPL
- Coax Flex Type: Corrugated

**Features**

- Max Frequency 3 GHz
- Low PIM: -160 dBc Max
- Shielding Effectivity > 100 dB
- 76% Phase Velocity
- FEP Jacket
- 100% Tested with PIM Test Results Marked on Cable
- UL910 Plenum Rated Cable
- Lightweight and Extremely Flexible
- Low Loss with Excellent VSWR
- IP67 (when mated)
- Using Times Microwave Components



**Applications**

- General Purpose
- Laboratory Use
- Low PIM Applications
- Distributed Antenna Systems (DAS)
- Plenum Installations
- Multi-Carrier Communication Systems
- PIM Testing

**Description**

Pasternack's PE3C6234-36 4.1/9.5 Mini DIN male right angle to type N male right angle 36 inch cable using SPP-250-LLPL coax is part of our full line of RF components available for same-day shipping. Pasternack's corrugated RF cable assemblies are ideal for applications where durability and high power are needed. This Pasternack 4.1/9.5 Mini DIN to type N cable assembly has a male to male gender configuration with 50 ohm corrugated SPP-250-LLPL coax. The PE3C6234-36 4.1/9.5 Mini DIN male to type N male cable assembly operates to 3 GHz. Our low PIM design also offers excellent passive intermodulation performance with PIM levels better than -160 dBc. The right angle 4.1/9.5 Mini DIN and right angle type N interfaces on the SPP-250-LLPL cable allow for easier connections in tight spaces. Times Microwave cable is used in each assembly and TMS components are used to form connections with the super flexible low PIM cable. These cable assemblies are expertly built to satisfy your specific need with high quality Times Microwave Systems manufactured parts.

Custom versions of most RF cable assemblies can be built and shipped same day. Custom cable assembly lengths can be obtained by specifying the desired length on the web site at time of order or by contacting a sales representative. Other available RF cable assembly value added services include connector orientation or clocking, heat shrink booting and custom labeling. RF testing can also be performed to document the electrical performance of your cable assembly.

**Electrical Specifications**

Description	Minimum	Typical	Maximum	Units
Frequency Range	DC		3	GHz

Plenum 4.1/9.5 Male Right Angle to N Male  
Right Angle Low PIM Cable 36 Inch Length Using SPP-  
250-LLPL Coax Using Times Microwave Parts



## PE3C6234-36

### Electrical Specifications

Description	Minimum	Typical	Maximum	Units
VSWR			1.4:1	
Velocity of Propagation		76		%
RF Shielding	100			dB
Passive Intermodulation IM3 (2x43dBm Tones) at 850 MHz or 1900 MHz		-165	-160	dBc
Capacitance		27 [88.58]		pF/ft [pF/m]
Inductance		0.067 [0.22]		uH/ft [uH/m]
DC Resistance Inner Conductor		3 [9.84]		Ohms/1000ft [Ohms/Km]

### Specifications by Frequency

Description	F1	F2	F3	F4	F5	Units
Frequency	0.45	0.7	1	2	3	GHz
Insertion Loss (Max.)	0.29	0.32	0.35	0.43	0.48	dB

#### Electrical Specification Notes:

PIM test results vary between cables

The Insertion Loss data above is based on the performance specifications of the coax used in this assembly. The Insertion Loss includes an estimated insertion loss of 0.05 dB for the 4.3-10 male connector and 0.12 dB for the N male connector.

### Mechanical Specifications

#### Cable Assembly

Width/Diameter	1 in [25.4 mm]
Weight	0.5 lbs [226.8 g]

#### Cable

Cable Type	SPP-250-LLPL
Impedance	50 Ohms
Inner Conductor Type	Solid
Inner Conductor Material and Plating	Copper
Dielectric Type	PTFE
Number of Shields	1
Shield Layer 1	Helically Corrugated Copper Tube
Outer Conductor 1 Material and Plating	Copper
Outer Conductor Diameter	0.25 in [6.35 mm]
Jacket Material	FEP, Blue
Jacket Diameter	0.28 in [7.11 mm]
One Time Minimum Bend Radius	1.25 in [31.75 mm]
Bending Moment	0.8 lbs-ft [1.08 N-m]

Plenum 4.1/9.5 Male Right Angle to N Male  
Right Angle Low PIM Cable 36 Inch Length Using SPP-  
250-LLPL Coax Using Times Microwave Parts



## PE3C6234-36

### Connectors

Description	Connector 1	Connector 2
Type	4.1/9.5 Mini DIN Male Right Angle	N Male Right Angle
Impedance	50 Ohms	50 Ohms
Configuration	Right Angle	Right Angle
Contact Material and Plating	Brass, Silver	Phosphor Bronze, Silver
Contact Plating Specification	200 $\mu$ in	196 $\mu$ in
Dielectric Type	PTFE	PTFE
Body Material and Plating	Brass, Nickel	Brass, Tri-Metal
Body Plating Specification	200 $\mu$ in	118 $\mu$ in
Coupling Nut Material and Plating	Brass, Nickel	Brass, Tri-Metal
Coupling Nut Plating Specification	200 $\mu$ in	118 $\mu$ in
Torque	106.21 in-lbs 12 Nm	10 in-lbs 1.13 Nm

### Environmental Specifications

Operating Range Temperature	-55 to +200 deg C
Storage Range Temperature	-55 to +200 deg C
Plenum Rating	UL910

**Compliance Certifications** (see [product page](#) for current document)

### Plotted and Other Data

Notes:  
Values at 25°C, sea level.

Plenum 4.1/9.5 Male Right Angle to N Male  
Right Angle Low PIM Cable 36 Inch Length Using SPP-  
250-LLPL Coax Using Times Microwave Parts



## PE3C6234-36

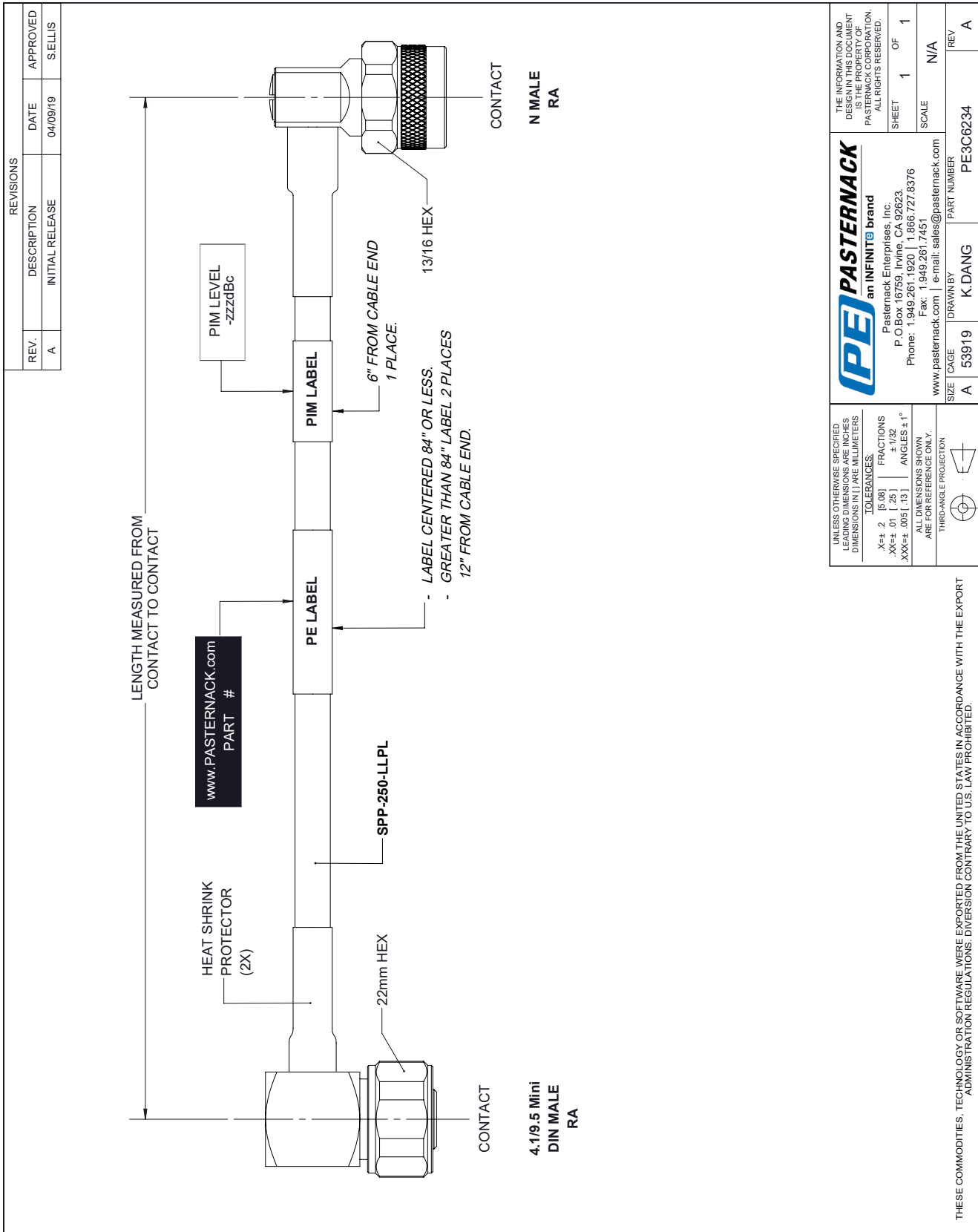
### Typical Performance Data





# PE3C6234-36 CAD Drawing

Plenum 4.1/9.5 Male Right Angle to N Male Right Angle Low PIM Cable 36 Inch Length Using SPP-250-LLPL Coax Using Times Microwave Parts



REVISIONS			
REV.	DESCRIPTION	DATE	APPROVED
A	INITIAL RELEASE	04/09/19	SELLIS

UNLESS OTHERWISE SPECIFIED LEADING DIMENSIONS ARE INCHES DIMENSIONS IN [ ] ARE MILLIMETERS

TOLERANCES:  
 .X±.2 [5.08] FRACTIONS ± 1/32  
 .XX±.01 [.25] ANGLES ± 1°  
 .XXX±.005 [.13] ALL DIMENSIONS SHOWN ARE FOR REFERENCE ONLY.

THIRD-ANGLE PROJECTION

THE INFORMATION AND DESIGN IN THIS DOCUMENT IS THE PROPERTY OF PASTERNAK CORPORATION. ALL RIGHTS RESERVED.

SHEET 1 OF 1

SCALE N/A

www.PASTERNAK.com

SIZE A CAGE 53919 DRAWN BY K.DANG PART NUMBER PE3C6234 REV A

THESE COMMODITIES, TECHNOLOGY OR SOFTWARE WERE EXPORTED FROM THE UNITED STATES IN ACCORDANCE WITH THE EXPORT ADMINISTRATION REGULATIONS. DIVERSION CONTRARY TO U.S. LAW PROHIBITED.

T-Rev.B