

Plenum SMA Male to NEX10 Male  
Low PIM Cable 150 cm Length Using SPP-250-LLPL  
Coax Using Times Microwave Parts



**PE3C6258-150CM**

**Configuration**

- Connector 1: SMA Male TC-SPP250-SM-LP
- Connector 2: NEX10 Male TC-250-NX10M-LP
- Cable Type: SPP-250-LLPL
- Coax Flex Type: Corrugated

**Features**

- Max Frequency 5.8 GHz
- Low PIM: -160 dBc Max
- Shielding Effectivity > 100 dB
- 76% Phase Velocity
- FEP Jacket
- 100% Tested with PIM Test Results Marked on Cable
- UL910 Plenum Rated Cable
- Lightweight and Extremely Flexible
- Low Loss with Excellent VSWR
- IP67 (when mated)
- Using Times Microwave Components



**Applications**

- General Purpose
- Laboratory Use
- Low PIM Applications
- Distributed Antenna Systems (DAS)
- Plenum Installations
- Multi-Carrier Communication Systems
- PIM Testing

**Description**

Pasternack's PE3C6258-150CM SMA male to NEX10 male 150 cm cable using SPP-250-LLPL coax is part of our full line of RF components available for same-day shipping. Pasternack's corrugated RF cable assemblies are ideal for applications where durability and high power are needed. This Pasternack SMA to NEX10 cable assembly has a male to male gender configuration with 50 ohm corrugated SPP-250-LLPL coax. The PE3C6258-150CM SMA male to NEX10 male cable assembly operates to 5.8 GHz. Our low PIM design also offers excellent passive intermodulation performance with PIM levels better than -160 dBc. Times Microwave cable is used in each assembly and TMS components are used to form connections with the super flexible low PIM cable. These cable assemblies are expertly built to satisfy your specific need with high quality Times Microwave Systems manufactured parts.

Custom versions of most RF cable assemblies can be built and shipped same day. Custom cable assembly lengths can be obtained by specifying the desired length on the web site at time of order or by contacting a sales representative. Other available RF cable assembly value added services include connector orientation or clocking, heat shrink booting and custom labeling. RF testing can also be performed to document the electrical performance of your cable assembly.

**Electrical Specifications**

| Description             | Minimum | Typical | Maximum | Units |
|-------------------------|---------|---------|---------|-------|
| Frequency Range         | DC      |         | 5.8     | GHz   |
| VSWR                    |         |         | 1.4:1   |       |
| Velocity of Propagation |         | 76      |         | %     |
| RF Shielding            | 100     |         |         | dB    |

Plenum SMA Male to NEX10 Male  
Low PIM Cable 150 cm Length Using SPP-250-LLPL  
Coax Using Times Microwave Parts



## PE3C6258-150CM

### Electrical Specifications

| Description   | Minimum | Typical      | Maximum | Units                 |
|---|---------|--------------|---------|-----------------------|
| Passive Intermodulation<br>IM3 (2x43dBm Tones) at 850 MHz or 1900 MHz |         | -165         | -160    | dBc                   |
| Capacitance   |         | 27 [88.58]   |         | pF/ft [pF/m]          |
| Inductance  |         | 0.067 [0.22] |         | uH/ft [uH/m]          |
| DC Resistance Inner Conductor   |         | 3 [9.84]     |         | Ohms/1000ft [Ohms/Km] |

### Specifications by Frequency

| Description           | F1   | F2   | F3   | F4   | F5   | Units |
|-----------------------|------|------|------|------|------|-------|
| Frequency             | 0.45 | 0.7  | 1    | 2.5  | 5.8  | GHz   |
| Insertion Loss (Max.) | 0.41 | 0.48 | 0.54 | 0.78 | 1.13 | dB    |

Electrical Specification Notes:

PIM test results vary between cables

The Insertion Loss data above is based on the performance specifications of the coax used in this assembly. The Insertion Loss includes an estimated insertion loss of 0.15 dB for the SMA male connector and  $0.1 \cdot \sqrt{\text{FGHz}}$  dB for the NEX10 male connector.

### Mechanical Specifications

#### Cable Assembly

Weight 0.4 lbs [181.44 g]

#### Cable

Cable Type SPP-250-LLPL  
 Impedance 50 Ohms  
 Inner Conductor Type Solid  
 Inner Conductor Material and Plating Copper  
 Dielectric Type PTFE  
 Number of Shields 1  
 Shield Layer 1 Helically Corrugated Copper Tube  
 Outer Conductor 1 Material and Plating Copper  
 Outer Conductor Diameter 0.25 in [6.35 mm]  
 Jacket Material FEP, Blue  
 Jacket Diameter 0.28 in [7.11 mm]  
 One Time Minimum Bend Radius 1.25 in [31.75 mm]  
 Bending Moment 0.8 lbs-ft [1.08 N-m]

Plenum SMA Male to NEX10 Male  
Low PIM Cable 150 cm Length Using SPP-250-LLPL  
Coax Using Times Microwave Parts



## PE3C6258-150CM

### Connectors

| Description                        | Connector 1       | Connector 2         |
|------------------------------------|-------------------|---------------------|
| Type                               | SMA Male          | NEX10 Male          |
| Impedance                          | 50 Ohms           | 50 Ohms             |
| Configuration                      | Straight          | Straight            |
| Mating Cycles                      |                   | 500                 |
| Contact Material and Plating       | Brass, Silver     | Brass, Silver       |
| Contact Plating Specification      | 196µ in           | 100 µin             |
| Dielectric Type                    | PTFE              | PTFE                |
| Body Material and Plating          | Brass, Tri-Metal  | Brass, Tri-Metal    |
| Body Plating Specification         | 118µ in           | 100 µin             |
| Coupling Nut Material and Plating  | Brass, Tri-Metal  | Brass, Tri-Metal    |
| Coupling Nut Plating Specification | 118µ in           | 100 µin             |
| Torque                             | 10 in-lbs 1.13 Nm | 13.28 in-lbs 1.5 Nm |

### Environmental Specifications

|                             |                   |
|-----------------------------|-------------------|
| Operating Range Temperature | -55 to +200 deg C |
| Storage Range Temperature   | -55 to +200 deg C |
| Plenum Rating               | UL910             |

**Compliance Certifications** (see [product page](#) for current document)

### Plotted and Other Data

Notes:  
Values at 25°C, sea level.

Plenum SMA Male to NEX10 Male  
Low PIM Cable 150 cm Length Using SPP-250-LLPL  
Coax Using Times Microwave Parts



## PE3C6258-150CM

### Typical Performance Data



Plenum SMA Male to NEX10 Male  
Low PIM Cable 150 cm Length Using SPP-250-LLPL  
Coax Using Times Microwave Parts



## PE3C6258-150CM

### How to Order

Part Number Configuration:

**PE3C6258**

- **xx**

**uu**

Unit of Measure:  
cm = Centimeters  
<blank> = Inches  
Length  
Base Number

Example: PE3C6258-12 = 12 inches long cable  
PE3C6258-100cm = 100 cm long cable

Plenum SMA Male to NEX10 Male Low PIM Cable 150 cm Length Using SPP-250-LLPL Coax Using Times Microwave Parts from Pasternack Enterprises has same day shipment for domestic and International orders. Our RF, microwave and millimeter wave products maintain a 99.4% availability and are part of the broadest selection in the industry.

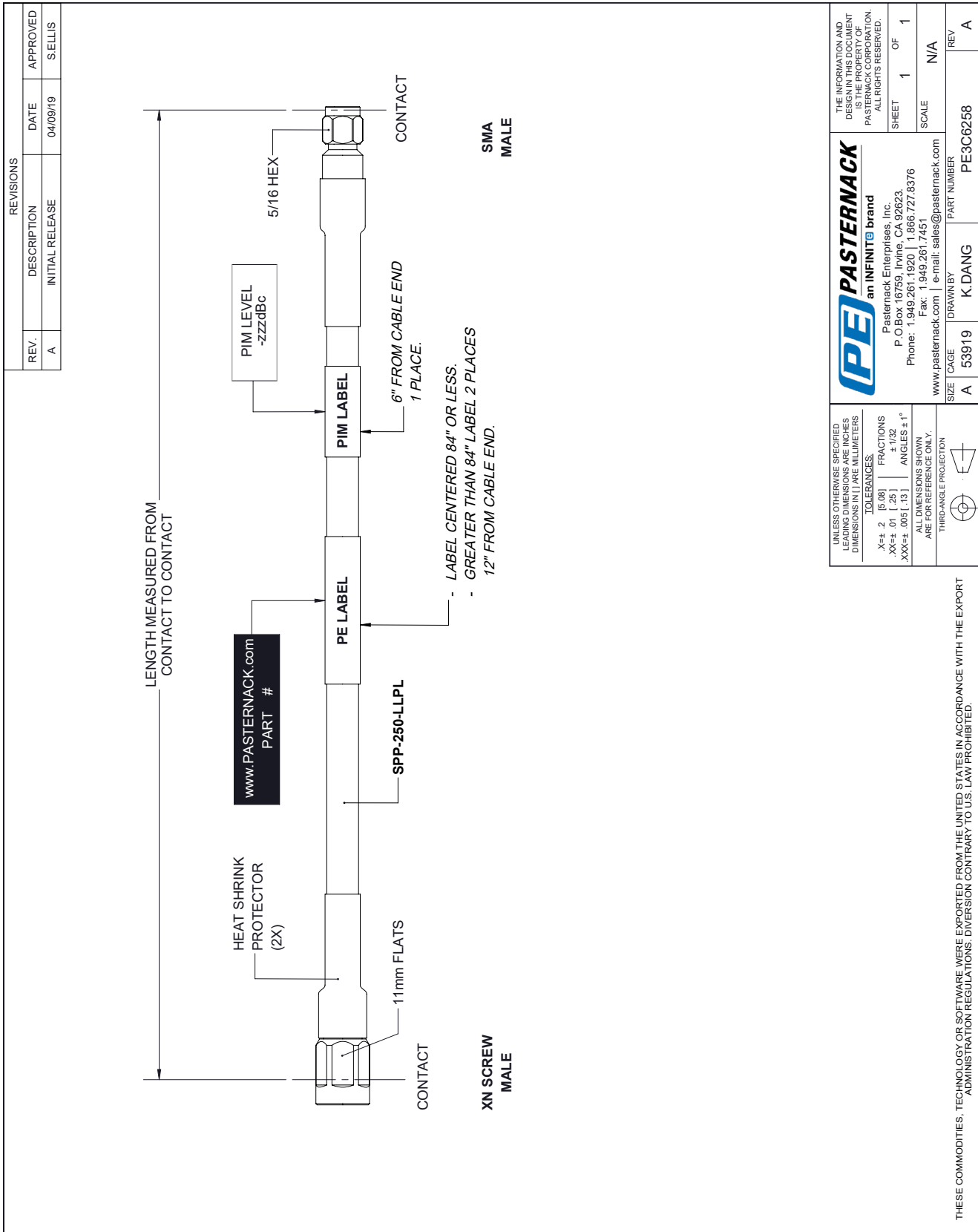
Click the following link (or enter part number in "SEARCH" on website) to obtain additional part information including price, inventory and certifications: [Plenum SMA Male to NEX10 Male Low PIM Cable 150 cm Length Using SPP-250-LLPL Coax Using Times Microwave Parts PE3C6258-150CM](#)

URL: <https://www.pasternack.com/sma-male-nex10-male-spp250llpl-cable-assembly-pe3c6258-150cm-p.aspx>

The information contained within this document is accurate to the best of our knowledge and representative of the part described herein. It may be necessary to make modifications to the part and/or the documentation of the part in order to implement improvements. Pasternack Enterprises reserves the right to make such changes as required. Unless otherwise stated, all specifications are nominal. Pasternack Enterprises does not make any representation or warranty regarding the suitability of the part described herein for any particular purpose, and Pasternack Enterprises does not assume liability arising out of the use of any part or document.

# PE3C6258-150CM CAD Drawing

Plenum SMA Male to NEX10 Male Low PIM Cable 150 cm Length Using SPP-250-LLPL Coax Using Times Microwave Parts



| REVISIONS |                 |          |          |
|-----------|-----------------|----------|----------|
| REV.      | DESCRIPTION     | DATE     | APPROVED |
| A         | INITIAL RELEASE | 04/09/19 | S.ELLIS  |

THE INFORMATION AND DESIGN IN THIS DOCUMENT IS THE PROPERTY OF PASTERNAK CORPORATION. ALL RIGHTS RESERVED.

**PE PASTERNAK**  
an INFINIT<sup>®</sup> brand

Pasternack Enterprises, Inc.  
P.O. Box 16759, Irvine, CA 92623  
Phone: 1.949.261.1920 | 1.866.727.8376  
Fax: 1.949.261.7451  
www.pasternack.com | e-mail: sales@pasternack.com

SHEET 1 OF 1  
SCALE N/A

|      |       |          |             |     |
|------|-------|----------|-------------|-----|
| SIZE | CAGE  | DRAWN BY | PART NUMBER | REV |
| A    | 53919 | K.DANG   | PE3C6258    | A   |