

## Plenum N Male Right Angle to SMA Male Low PIM Cable Using SPP-250-LLPL Coax



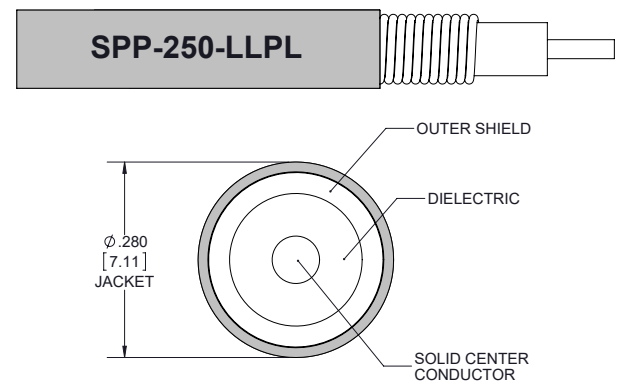
### PE3C7543

#### Configuration

- Connector 1: N Male Right Angle
- Connector 2: SMA Male
- Cable Type: SPP-250-LLPL
- Coax Flex Type: Corrugated

#### Features

- Max Frequency 6 GHz
- Low PIM: -160 dBc Max
- Shielding Effectivity > 100 dB
- 76% Phase Velocity
- FEP Jacket



#### Applications

- General Purpose
- Laboratory Use
- Low PIM Applications

#### Description

Pasternack's PE3C7543 type N male right angle to SMA male cable using SPP-250-LLPL coax is part of our full line of RF components available for same-day shipping. Pasternack's corrugated RF cable assemblies are ideal for applications where durability and high power are needed. This Pasternack type N to SMA cable assembly has a male to male gender configuration with 50 ohm corrugated SPP-250-LLPL coax. The PE3C7543 type N male to SMA male cable assembly operates to 6 GHz. Our low PIM design also offers excellent passive intermodulation performance with PIM levels better than -160 dBc. The right angle type N interface on the SPP-250-LLPL cable allows for easier connections in tight spaces.

Custom versions of most RF cable assemblies can be built and shipped same day. Custom cable assembly lengths can be obtained by specifying the desired length on the web site at time of order or by contacting a sales representative. Other available RF cable assembly value added services include connector orientation or clocking, heat shrink booting and custom labeling. RF testing can also be performed to document the electrical performance of your cable assembly.

#### Electrical Specifications

Description	Minimum	Typical	Maximum	Units
Frequency Range	DC		6	GHz
VSWR			1.4:1	
Velocity of Propagation		76		%
RF Shielding	100			dB
Passive Intermodulation			-160	dBc
Capacitance		27 [88.58]		pF/ft [pF/m]
Inductance		0.067 [0.22]		uH/ft [uH/m]
DC Resistance Inner Conductor		3 [9.84]		Ohms/1000ft [Ohms/Km]

#### Specifications by Frequency

Plenum N Male Right Angle to SMA Male  
Low PIM Cable Using SPP-250-LLPL Coax



**PE3C7543**

Part Number	Length	Description	F1	F2	F3	F4	Units	Weight (lbs)
			Frequency	500	1000	2500	5800	
PE3C7543	Custom Lengths Available	Insertion Loss (Typ.)	0.039	0.054	0.091	0.145	dB/ft	
			0.13	0.18	0.3	0.48	dB/m	
PE3C7543-12	12 Inch	Insertion Loss (Typ.)	0.14	0.2	0.32	0.49	dB	0.175
PE3C7543-24	24 Inch	Insertion Loss (Typ.)	0.18	0.25	0.41	0.63	dB	0.245
PE3C7543-36	36 Inch	Insertion Loss (Typ.)	0.22	0.31	0.5	0.78	dB	0.315
PE3C7543-60	60 Inch	Insertion Loss (Typ.)	0.3	0.41	0.68	1.07	dB	0.455
PE3C7543-50CM	50 CM	Insertion Loss (Typ.)	0.17	0.23	0.38	0.58	dB	0.22

The insertion loss data for the base model does not include loss due to the connectors. Each length includes insertion loss due to the connectors.

Loss due to Connector 1: 0.04\*SQRT(FGHz) dB  
 Loss due to Connector 2: 0.1\*SQRT(FGHz) dB  
 Base Weight: 0.175 pounds  
 Additional Weight per Inch: 0.61583 pounds

**Mechanical Specifications**

**Cable Assembly**

Width/Diameter 0.5 in [12.7 mm]  
 Weight 0.175 lbs [79.38 g]

**Cable**

Cable Type SPP-250-LLPL  
 Impedance 50 Ohms  
 Inner Conductor Type Solid  
 Inner Conductor Material and Plating Copper  
 Dielectric Type PTFE  
 Number of Shields 1  
 Outer Conductor 1 Material and Plating Copper  
 Jacket Material FEP, Blue  
 Jacket Diameter 0.28 in [7.11 mm]  
 One Time Minimum Bend Radius 1.25 in [31.75 mm]  
 Bending Moment 0.8 lbs-ft [1.08 N-m]

Plenum N Male Right Angle to SMA Male  
Low PIM Cable Using SPP-250-LLPL Coax



## PE3C7543

### Connectors

Description	Connector 1	Connector 2
Type	N Male Right Angle	SMA Male
Impedance	50 Ohms	50 Ohms
Configuration	Right Angle	Straight
Contact Material and Plating	Brass, Silver	Brass, Silver
Contact Plating Specification		200 µin minimum
Dielectric Type	PTFE	PTFE
Body Material and Plating	Brass, Tri-Metal	Brass, Tri-Metal
Body Plating Specification		80 µin minimum
Coupling Nut Material and Plating	Brass, Tri-Metal	Brass, Tri-Metal
Coupling Nut Plating Specification		80 µin minimum
Torque		7 in-lbs 0.79 Nm

### Environmental Specifications

Operating Range Temperature -40 to +125 deg C

**Compliance Certifications** (see [product page](#) for current document)

### Plotted and Other Data

Notes:

Plenum N Male Right Angle to SMA Male  
Low PIM Cable Using SPP-250-LLPL Coax



**PE3C7543**

**Typical Performance Data**

**How to Order**

Part Number Configuration:

**PE3C7543**

**- xx**

**uu**

Unit of Measure:  
cm = Centimeters  
<blank> = Inches  
Length  
Base Number

Example: PE3C7543-12 = 12 inches long cable  
PE3C7543-100cm = 100 cm long cable

Plenum N Male Right Angle to SMA Male Low PIM Cable Using SPP-250-LLPL Coax from Pasternack Enterprises has same day shipment for domestic and International orders. Our RF, microwave and millimeter wave products maintain a 99.4% availability and are part of the broadest selection in the industry.

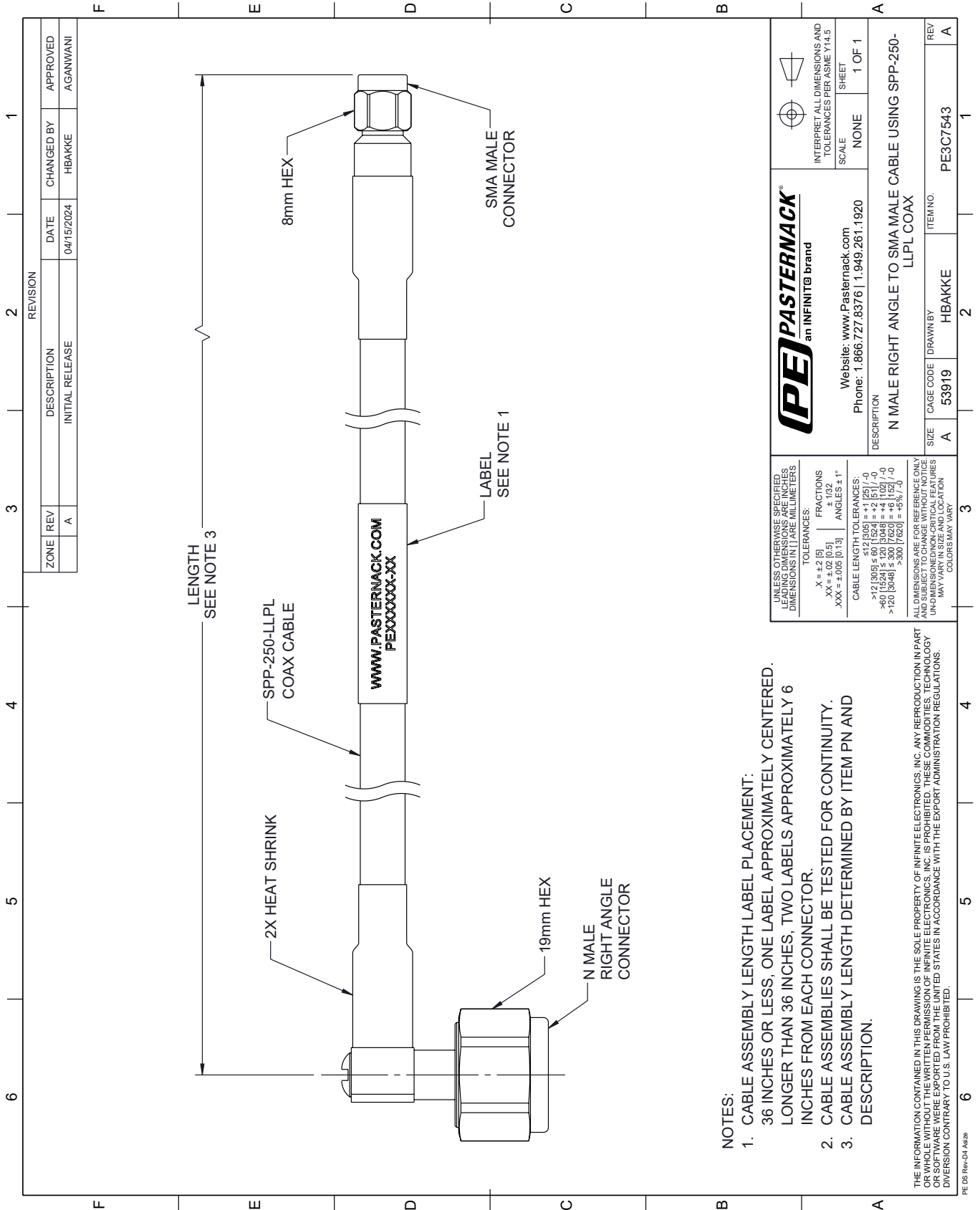
Click the following link (or enter part number in "SEARCH" on website) to obtain additional part information including price, inventory and certifications: [Plenum N Male Right Angle to SMA Male Low PIM Cable Using SPP-250-LLPL Coax PE3C7543](#)

URL: <https://www.pasternack.com/plenum-n-male-right-angle-to-sma-male-low-pim-cable-using-spp-250-llpl-pe3c7543-p.aspx>

The information contained within this document is accurate to the best of our knowledge and representative of the part described herein. It may be necessary to make modifications to the part and/or the documentation of the part in order to implement improvements. Pasternack Enterprises reserves the right to make such changes as required. Unless otherwise stated, all specifications are nominal. Pasternack Enterprises does not make any representation or warranty regarding the suitability of the part described herein for any particular purpose, and Pasternack Enterprises does not assume liability arising out of the use of any part or document.

# PE3C7543 CAD Drawing


Plenum N Male Right Angle to SMA Male Low PIM Cable Using SPP-250-LLPL Coax



**NOTES:**

1. CABLE ASSEMBLY LENGTH LABEL PLACEMENT: 36 INCHES OR LESS, ONE LABEL APPROXIMATELY CENTERED, LONGER THAN 36 INCHES, TWO LABELS APPROXIMATELY 6 INCHES FROM EACH CONNECTOR.
2. CABLE ASSEMBLIES SHALL BE TESTED FOR CONTINUITY.
3. CABLE ASSEMBLY LENGTH DETERMINED BY ITEM PN AND DESCRIPTION.

THE INFORMATION CONTAINED IN THIS DRAWING IS THE SOLE PROPERTY OF INFINITE ELECTRONICS, INC. ANY REPRODUCTION IN PART OR WHOLE WITHOUT THE WRITTEN PERMISSION OF INFINITE ELECTRONICS, INC. IS PROHIBITED. THESE COMMODITIES, TECHNOLOGY OR SOFTWARE WERE EXPORTED FROM THE UNITED STATES IN ACCORDANCE WITH THE EXPORT ADMINISTRATION REGULATIONS. DIVERSION CONTRARY TO U.S. LAW PROHIBITED.

 <p><b>PASTERNAK</b> an INFINITE brand</p>	<p>Website: <a href="http://www.Pasternack.com">www.Pasternack.com</a></p> <p>Phone: 1.866.727.8376   1.949.261.1920</p>	<p>INTERPRET ALL DIMENSIONS AND TOLERANCES PER ASME Y14.5</p> <p>SCALE: NONE</p> <p>SHEET: 1 OF 1</p>
	<p>DESCRIPTION: N MALE RIGHT ANGLE TO SMA MALE CABLE USING SPP-250-LLPL COAX</p>	
<p>UNLESS OTHERWISE SPECIFIED, LEADING DIMENSIONS ARE IN INCHES. DIMENSIONS IN [ ] ARE MILLIMETERS.</p> <p>TOLERANCES:</p> <p>.X = +.2 [5]      FRACTIONS ± 1/32</p> <p>.XX = ±.02 [0.5]      ANGLES ± 1°</p> <p>.XXX = ±.005 [0.13]</p> <p>CABLE LENGTH TOLERANCES:</p> <p>&gt;12 [305] ≤ 60 [1524] = +.1 [25] / -0</p> <p>&gt;60 [1524] ≤ 120 [3048] = +.4 [102] / -0</p> <p>&gt;120 [3048] ≤ 300 [7620] = +.6 [152] / -0</p>	<p>ALL DIMENSIONS ARE FOR REFERENCE ONLY. UNDIMENSIONED NON-CRITICAL FEATURES MAY VARY IN SIZE AND LOCATION. COLORS MAY VARY.</p>	<p>REV: A</p> <p>ITEM NO: PE3C7543</p>