



2.92mm Female Bulkhead to Straight Cut Lead Cable 12 Inch Length Using RG405 Coax

RF Cable Assemblies Technical Data Sheet

PE3C7619-12

Configuration

- Connector 1: 2.92mm Female Bulkhead
- Connector 2: Straight Cut Lead
- Cable Type: RG405

Features

- Shielding Effectivity > -110 dB
- 69.5% Phase Velocity

Applications

- General Purpose
- Laboratory Use

Description

Pasternack's PE3C7619-12 50 ohm 2.92mm female bulkhead to straight cut lead 12 inch cable using RG405 coax is part of our full line of RF components available for same-day shipping. Pasternack's semi-rigid RF cable assemblies are ideal for high performance applications and can be formed, using proper tooling, to the routing pattern required. Our RF cable assembly with 2.92mm bulkhead interface allows designers to create external connections on their product enclosures, and can be used in a variety of other rack mount and panel mount applications.

Custom versions of most RF cable assemblies can be built and shipped same day. Custom cable assembly lengths can be obtained by specifying the desired length on the web site at time of order or by contacting a sales representative. Other available RF cable assembly value added services include connector orientation or clocking, heat shrink booting and custom labeling. RF testing can also be performed to document the electrical performance of your cable assembly.

Electrical Specifications

| Description | Minimum | Typical | Maximum | Units |
|-------------------------|---------|--------------|---------|--------------|
| Velocity of Propagation | | 69.5 | | % |
| RF Shielding | -110 | | | dB |
| Capacitance | | 29.4 [96.46] | | pF/ft [pF/m] |

Mechanical Specifications

Cable Assembly

Length* 12 in [304.8 mm]

Cable

Cable Type RG405
Impedance 50 Ohms
Inner Conductor Type Solid
Inner Conductor Material and Plating Copper Clad Steel, Silver
Dielectric Type PTFE

Click the following link (or enter part number in "SEARCH" on website) to obtain additional part information including price, inventory and certifications: [2.92mm Female Bulkhead to Straight Cut Lead Cable 12 Inch Length Using RG405 Coax PE3C7619-12](#)



2.92mm Female Bulkhead to Straight Cut Lead
Cable 12 Inch Length Using RG405 Coax

RF Cable Assemblies Technical Data Sheet

PE3C7619-12

| | |
|--------------------------------------|-------------------|
| Number of Shields | 1 |
| Outer Conductor Material and Plating | Copper |
| Repeated Minimum Bend Radius | 0.05 in [1.27 mm] |

Connectors

| Description | Connector 1 | Connector 2 |
|-------------------------------|------------------------------------|-------------------|
| Type | 2.92mm Female Bulkhead | Straight Cut Lead |
| Impedance | 50 Ohms | 0 Ohms |
| Contact Material and Plating | Beryllium Copper, Gold over Nickel | |
| Contact Plating Specification | 50 µin minimum | |
| Body Material and Plating | Passivated Stainless Steel | |
| Body Plating Specification | SAE-AMS-2700 | |

Compliance Certifications (see [product page](#) for current document)

Plotted and Other Data

Notes:

Click the following link (or enter part number in "SEARCH" on website) to obtain additional part information including price, inventory and certifications: [2.92mm Female Bulkhead to Straight Cut Lead Cable 12 Inch Length Using RG405 Coax PE3C7619-12](#)



2.92mm Female Bulkhead to Straight Cut Lead Cable 12 Inch Length Using RG405 Coax

RF Cable Assemblies Technical Data Sheet

PE3C7619-12

How to Order

Part Number Configuration:

PE3C7619

- **xx**

uu

Unit of Measure:
cm = Centimeters
<blank> = Inches
Length
Base Number

Example: PE3C7619-12 = 12 inches long cable
PE3C7619-100cm = 100 cm long cable

2.92mm Female Bulkhead to Straight Cut Lead Cable 12 Inch Length Using RG405 Coax from Pasternack Enterprises has same day shipment for domestic and International orders. Our RF, microwave and millimeter wave products maintain a 99.4% availability and are part of the broadest selection in the industry.

Click the following link (or enter part number in "SEARCH" on website) to obtain additional part information including price, inventory and certifications: [2.92mm Female Bulkhead to Straight Cut Lead Cable 12 Inch Length Using RG405 Coax PE3C7619-12](#)

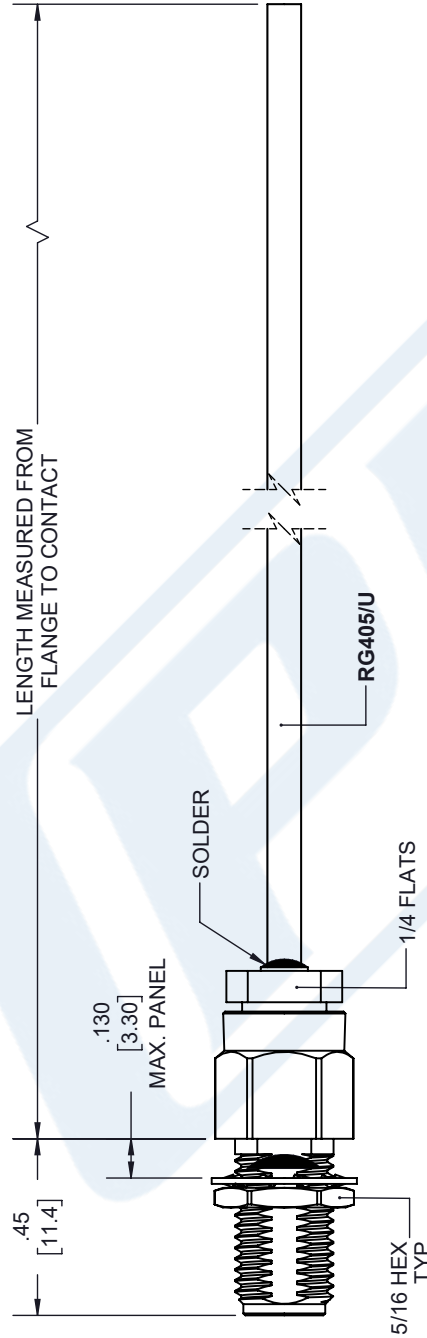
URL:

The information contained in this document is accurate to the best of our knowledge and representative of the part described herein. It may be necessary to make modifications to the part and/or the documentation of the part, in order to implement improvements. Pasternack reserves the right to make such changes as required. Unless otherwise stated, all specifications are nominal. Pasternack does not make any representation or warranty regarding the suitability of the part described herein for any particular purpose, and Pasternack does not assume any liability arising out of the use of any part or documentation.

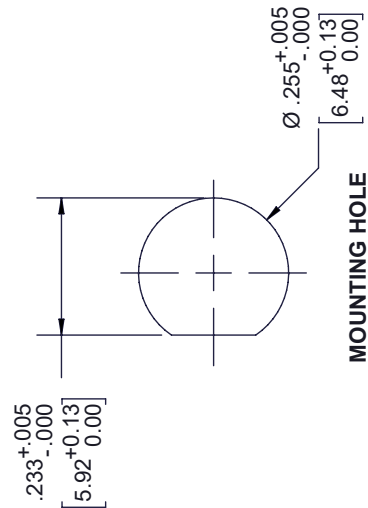
PE3C7619-12 CAD Drawing

2.92mm Female Bulkhead to Straight Cut Lead Cable 12 Inch Length Using RG405 Coax

| REVISIONS | | | |
|-----------|-----------------|------------|----------|
| REV. | DESCRIPTION | DATE | APPROVED |
| A | INITIAL RELEASE | 10/21/2020 | S. ELLIS |



2.92mm FEMALE
BULKHEAD



UNLESS OTHERWISE SPECIFIED
LEADING DIMENSIONS ARE INCHES
DIMENSIONS IN [] ARE MILLIMETERS

TOLERANCES:

| | | |
|---------------|--------|-------------|
| X = ± .2 | [.008] | FRACTIONS |
| .XX = ± .02 | [.51] | ± 1/32 |
| .XXX = ± .005 | [.13] | ANGLES ± 1° |

CABLE LENGTH (L) TOLERANCES:

| | |
|-----------------------------|--------------|
| L ≤ 12 [305] | ± .125 / -0 |
| 12 [305] < L ≤ 60 [1524] | ± .251 / -0 |
| 60 [1524] < L ≤ 120 [3048] | ± .4102 / -0 |
| 120 [3048] < L ≤ 300 [7620] | ± .6152 / -0 |
| 300 [7620] < L | ± .5% / -0 |

ALL DIMENSIONS SHOWN
ARE FOR REFERENCE ONLY.

PE PASTERNAK
an INFINITE brand

Pasternack Enterprises, Inc.
P.O. Box 16759, Irvine, CA 92623.
Phone: 1.949.261.1920 | 1.866.727.8376
Fax: 1.949.261.7451
Website: www.pasternack.com
E-mail: sales@pasternack.com

THIRD-ANGLE PROJECTION

THE INFORMATION AND
DESIGN IN THIS DOCUMENT
IS THE PROPERTY OF
PASTERNAK CORPORATION
ALL RIGHTS RESERVED.

SHEET 1 OF 1

SCALE N/A

REV A

ITEM NO. PE3C7619

SIZE A

CAGE CODE 53919

DRAWN BY K.DANG