



## 2.92mm Female Bulkhead to Straight Cut Lead Cable 48 Inch Length Using RG405 Coax

### RF Cable Assemblies Technical Data Sheet

PE3C7619-48

#### Configuration

- Connector 1: 2.92mm Female Bulkhead
- Connector 2: Straight Cut Lead
- Cable Type: RG405

#### Features

- Shielding Effectivity > -110 dB
- 69.5% Phase Velocity

#### Applications

- General Purpose
- Laboratory Use

#### Description

Pasternack's PE3C7619-48 50 ohm 2.92mm female bulkhead to straight cut lead 48 inch cable using RG405 coax is part of our full line of RF components available for same-day shipping. Pasternack's semi-rigid RF cable assemblies are ideal for high performance applications and can be formed, using proper tooling, to the routing pattern required. Our RF cable assembly with 2.92mm bulkhead interface allows designers to create external connections on their product enclosures, and can be used in a variety of other rack mount and panel mount applications.

Custom versions of most RF cable assemblies can be built and shipped same day. Custom cable assembly lengths can be obtained by specifying the desired length on the web site at time of order or by contacting a sales representative. Other available RF cable assembly value added services include connector orientation or clocking, heat shrink booting and custom labeling. RF testing can also be performed to document the electrical performance of your cable assembly.

#### Electrical Specifications

Description	Minimum	Typical	Maximum	Units
Velocity of Propagation		69.5		%
RF Shielding	-110			dB
Capacitance		29.4 [96.46]		pF/ft [pF/m]

#### Mechanical Specifications

##### Cable Assembly

Length\* 48 in [121.92 cm]

##### Cable

Cable Type RG405  
Impedance 50 Ohms  
Inner Conductor Type Solid  
Inner Conductor Material and Plating Copper Clad Steel, Silver  
Dielectric Type PTFE

Click the following link (or enter part number in "SEARCH" on website) to obtain additional part information including price, inventory and certifications: [2.92mm Female Bulkhead to Straight Cut Lead Cable 48 Inch Length Using RG405 Coax PE3C7619-48](#)



2.92mm Female Bulkhead to Straight Cut Lead  
Cable 48 Inch Length Using RG405 Coax

RF Cable Assemblies Technical Data Sheet

PE3C7619-48

Number of Shields	1
Outer Conductor Material and Plating	Copper
Repeated Minimum Bend Radius	0.05 in [1.27 mm]

**Connectors**

Description	Connector 1	Connector 2
Type	2.92mm Female Bulkhead	Straight Cut Lead
Impedance	50 Ohms	0 Ohms
Contact Material and Plating	Beryllium Copper, Gold over Nickel	
Contact Plating Specification	50 µin minimum	
Body Material and Plating	Passivated Stainless Steel	
Body Plating Specification	SAE-AMS-2700	

**Compliance Certifications** (see [product page](#) for current document)

**Plotted and Other Data**

Notes:

Click the following link (or enter part number in "SEARCH" on website) to obtain additional part information including price, inventory and certifications: [2.92mm Female Bulkhead to Straight Cut Lead Cable 48 Inch Length Using RG405 Coax PE3C7619-48](#)



## 2.92mm Female Bulkhead to Straight Cut Lead Cable 48 Inch Length Using RG405 Coax

### RF Cable Assemblies Technical Data Sheet

PE3C7619-48

#### How to Order

Part Number Configuration:

PE3C7619

- xx

uu

Unit of Measure:  
cm = Centimeters  
<blank> = Inches  
Length  
Base Number

Example: PE3C7619-12 = 12 inches long cable  
PE3C7619-100cm = 100 cm long cable

2.92mm Female Bulkhead to Straight Cut Lead Cable 48 Inch Length Using RG405 Coax from Pasternack Enterprises has same day shipment for domestic and International orders. Our RF, microwave and millimeter wave products maintain a 99.4% availability and are part of the broadest selection in the industry.

Click the following link (or enter part number in "SEARCH" on website) to obtain additional part information including price, inventory and certifications: [2.92mm Female Bulkhead to Straight Cut Lead Cable 48 Inch Length Using RG405 Coax PE3C7619-48](#)

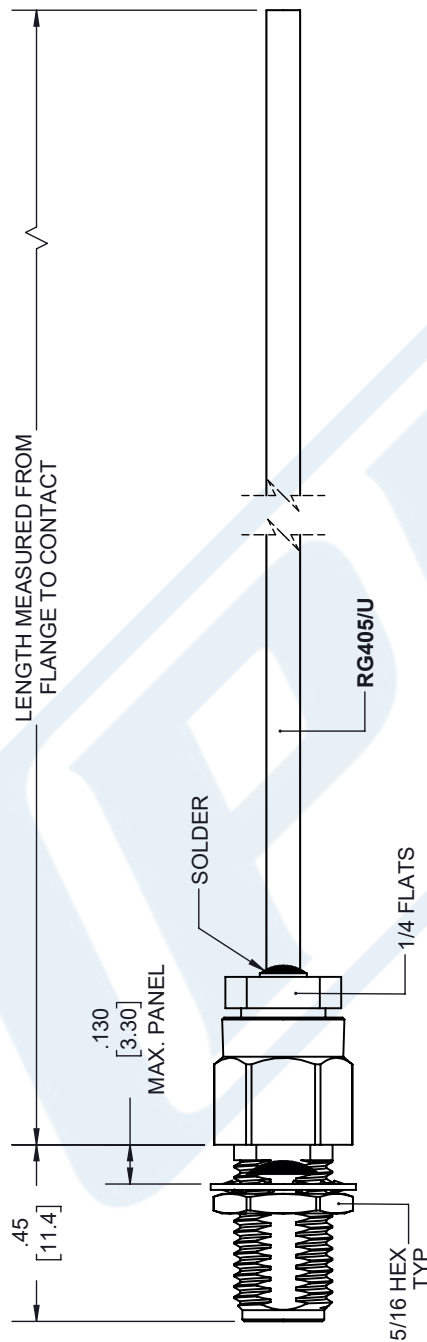
URL:

The information contained in this document is accurate to the best of our knowledge and representative of the part described herein. It may be necessary to make modifications to the part and/or the documentation of the part, in order to implement improvements. Pasternack reserves the right to make such changes as required. Unless otherwise stated, all specifications are nominal. Pasternack does not make any representation or warranty regarding the suitability of the part described herein for any particular purpose, and Pasternack does not assume any liability arising out of the use of any part or documentation.

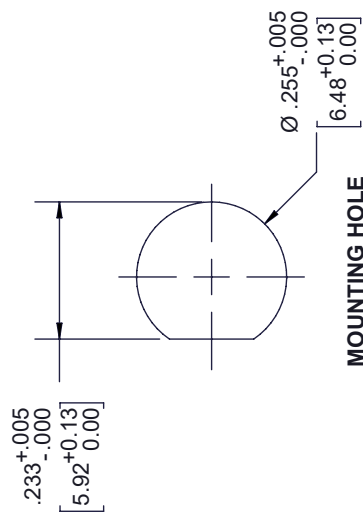
# PE3C7619-48 CAD Drawing

2.92mm Female Bulkhead to Straight Cut Lead Cable 48 Inch Length Using RG405 Coax

REVISIONS			
REV.	DESCRIPTION	DATE	APPROVED
A	INITIAL RELEASE	10/21/2020	S. ELLIS



2.92mm FEMALE  
BULKHEAD



UNLESS OTHERWISE SPECIFIED  
LEADING DIMENSIONS ARE INCHES  
DIMENSIONS IN [ ] ARE MILLIMETERS

TOLERANCES:  
X = ± .2 [5.08] FRACTIONS  
.XX = ± .02 [ .51] ANGLES ± 1°  
.XXX = ± .005 [ .13] ANGLES ± 1°  
CABLE LENGTH (L) TOLERANCES:  
L ≤ 12 [305] = ± .1 [25] / -0  
12 [305] < L ≤ 60 [1524] = ± .2 [51] / -0  
60 [1524] < L ≤ 120 [3048] = ± .4 [102] / -0  
120 [3048] < L ≤ 300 [7620] = ± .6 [152] / -0  
300 [7620] < L = +5% / -0

ALL DIMENSIONS SHOWN  
ARE FOR REFERENCE ONLY.

**PE PASTERNAK**  
an INFINITE brand

Pasternack Enterprises, Inc.  
P.O. Box 16759, Irvine, CA 92623.  
Phone: 1.949.261.1920 | 1.866.727.8376  
Fax: 1.949.261.7451  
Website: www.pasternack.com  
E-mail: sales@pasternack.com

THIRD-ANGLE PROJECTION

THE INFORMATION AND  
DESIGN IN THIS DOCUMENT  
IS THE PROPERTY OF  
PASTERNAK CORPORATION  
ALL RIGHTS RESERVED.

SHEET 1 OF 1  
SCALE N/A  
REV A

THESE COMMODITIES, TECHNOLOGY OR SOFTWARE WERE EXPORTED FROM THE UNITED STATES IN ACCORDANCE  
WITH THE EXPORT ADMINISTRATION REGULATIONS. DIVERSION CONTRARY TO U.S. LAW PROHIBITED.