

Plenum 4.3-10 Male Right Angle to SMA Male Low PIM  
Cable 12 Inch Length Using SPP-250-LLPL Coax



**PE3C7884-12**

**Configuration**

- Connector 1: 4.3-10 Male Right Angle
- Connector 2: SMA Male
- Cable Type: SPP-250-LLPL
- Coax Flex Type: Corrugated

**Features**

- Max Frequency 5.8 GHz
- Low PIM: -155 dBc Max
- Shielding Effectivity > 100 dB
- 76% Phase Velocity
- FEP Jacket



**Applications**

- General Purpose
- Laboratory Use
- Low PIM Applications

**Description**

Pasternack's PE3C7884-12 4.3-10 male right angle to SMA male 12 inch cable using SPP-250-LLPL coax is part of our full line of RF components available for same-day shipping. Pasternack's corrugated RF cable assemblies are ideal for applications where durability and high power are needed. This Pasternack 4.3-10 to SMA cable assembly has a male to male gender configuration with 50 ohm corrugated SPP-250-LLPL coax. The PE3C7884-12 4.3-10 male to SMA male cable assembly operates to 5.8 GHz. Our low PIM design also offers excellent passive intermodulation performance with PIM levels better than -155 dBc. The right angle 4.3-10 interface on the SPP-250-LLPL cable allows for easier connections in tight spaces.

Custom versions of most RF cable assemblies can be built and shipped same day. Custom cable assembly lengths can be obtained by specifying the desired length on the web site at time of order or by contacting a sales representative. Other available RF cable assembly value added services include connector orientation or clocking, heat shrink booting and custom labeling. RF testing can also be performed to document the electrical performance of your cable assembly.

**Electrical Specifications**

Description	Minimum	Typical	Maximum	Units
Frequency Range	DC		5.8	GHz
VSWR			1.4:1	
Velocity of Propagation		76		%
RF Shielding	100			dB
Passive Intermodulation IM3 (2x43dBm Tones) at 850 MHz or 1900 MHz			-155	dBc
Capacitance		27 [88.58]		pF/ft [pF/m]
Inductance		0.067 [0.22]		uH/ft [uH/m]
DC Resistance Inner Conductor		3 [9.84]		Ohms/1000ft [Ohms/Km]
Operating Voltage (AC)			250	Vrms

Plenum 4.3-10 Male Right Angle to SMA Male Low PIM  
Cable 12 Inch Length Using SPP-250-LLPL Coax



**PE3C7884-12**

**Electrical Specifications**

Description	Minimum	Typical	Maximum	Units
Operating Voltage (DC)			2,500	Vdc

**Specifications by Frequency**

Description	F1	F2	F3	F4	F5	Units
Frequency	0.25	0.5	1	2.5	5.8	GHz

Electrical Specification Notes:

The Insertion Loss data above is based on the performance specifications of the coax and connectors used in this assembly. The Insertion Loss includes an estimated insertion loss of 0.04xSQRT(FGHz)dB for the right angle connector and 0.1 dB for the straight connector.

**Mechanical Specifications**

**Cable Assembly**

Length	12 in [304.8 mm]
Width/Diameter	0.5 in [12.7 mm]
Weight	0.245 lbs [111.13 g]

**Cable**

Cable Type	SPP-250-LLPL
Impedance	50 Ohms
Inner Conductor Type	Solid
Inner Conductor Material and Plating	Copper
Dielectric Type	PTFE
Number of Shields	1
Outer Conductor 1 Material and Plating	Copper
Jacket Material	FEP, Blue
Jacket Diameter	0.28 in [7.11 mm]
One Time Minimum Bend Radius	1.25 in [31.75 mm]
Bending Moment	0.8 lbs-ft [1.08 N-m]

Plenum 4.3-10 Male Right Angle to SMA Male Low PIM  
Cable 12 Inch Length Using SPP-250-LLPL Coax



**PE3C7884-12**

**Connectors**

Description	Connector 1	Connector 2
Type	4.3-10 Male Right Angle	SMA Male
Impedance	50 Ohms	50 Ohms
Configuration	Right Angle	Straight
Contact Material and Plating	Brass, Silver	Brass, Silver
Contact Plating Specification	200 µin	
Dielectric Type	PTFE	PTFE
Body Material and Plating	Brass, Tri-Metal	Brass, Tri-Metal
Body Plating Specification	80 µin	
Coupling Nut Material and Plating	Brass, Nickel	Brass, Tri-Metal
Coupling Nut Plating Specification	200 µin	

**Environmental Specifications**

Operating Range Temperature	-40 to +85 deg C
Shock	MIL-STD-202G, Method 213, Condition I
Vibration	MIL-STD-202G, Method 204, Condition B
Thermal Shock	MIL-STD-202G, Method 107, Condition B

**Compliance Certifications** (see [product page](#) for current document)

**Plotted and Other Data**

Notes:

Plenum 4.3-10 Male Right Angle to SMA Male Low PIM  
Cable 12 Inch Length Using SPP-250-LLPL Coax



## PE3C7884-12

### Typical Performance Data

### How to Order

Part Number Configuration:

**PE3C7884**

- **xx**

**uu**

Unit of Measure:

cm = Centimeters

<blank> = Inches

Length

Base Number

Example: PE3C7884-12 = 12 inches long cable  
PE3C7884-100cm = 100 cm long cable

Plenum 4.3-10 Male Right Angle to SMA Male Low PIM Cable 12 Inch Length Using SPP-250-LLPL Coax from Pasternack Enterprises has same day shipment for domestic and International orders. Our RF, microwave and millimeter wave products maintain a 99.4% availability and are part of the broadest selection in the industry.

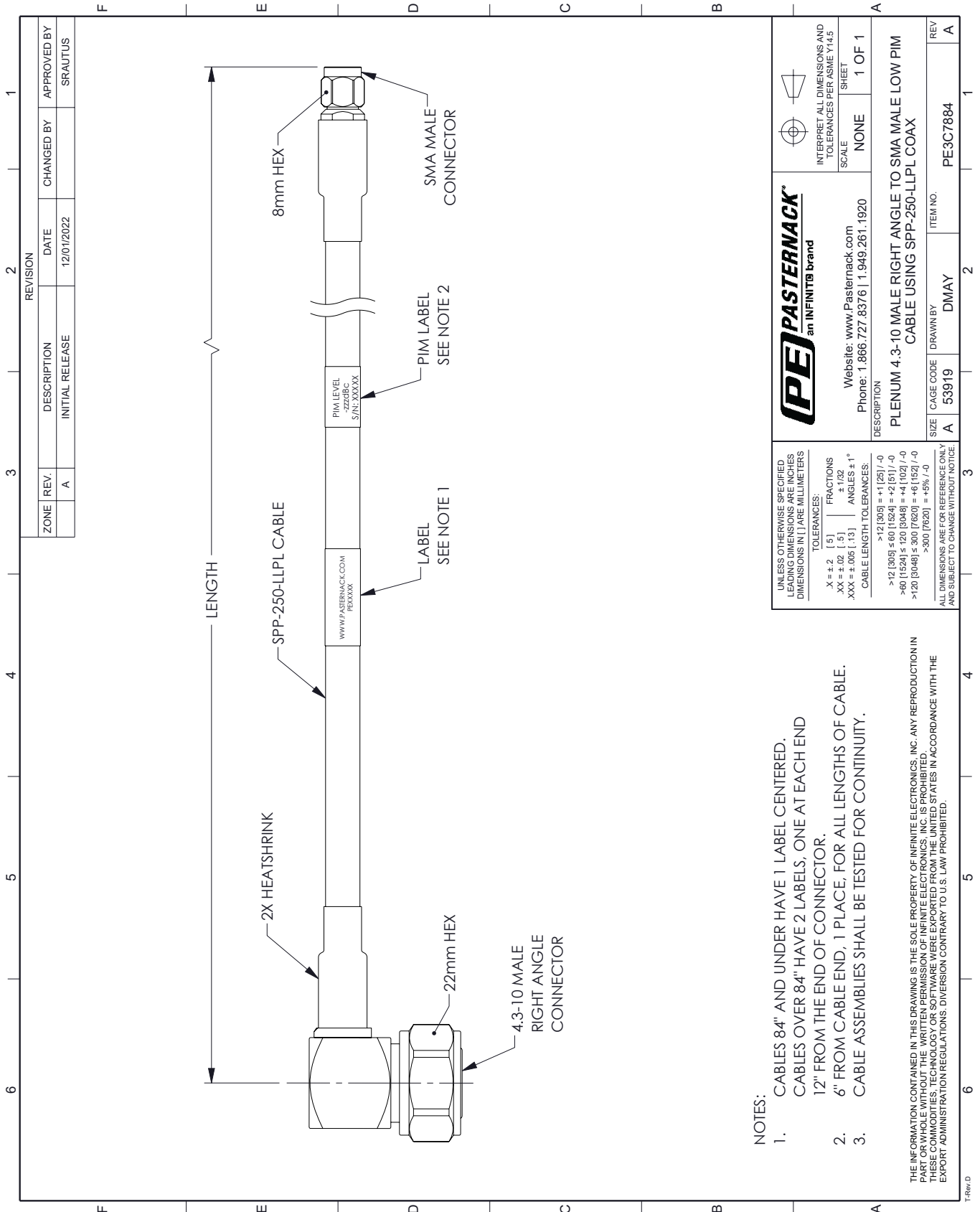
Click the following link (or enter part number in "SEARCH" on website) to obtain additional part information including price, inventory and certifications: [Plenum 4.3-10 Male Right Angle to SMA Male Low PIM Cable 12 Inch Length Using SPP-250-LLPL Coax PE3C7884-12](https://www.pasternack.com/plenum-4.3-10-male-right-angle-to-sma-male-low-pim-cable-12-inch-length-using-spp-250-llpl-pe3c7884-12-p.aspx)

URL: <https://www.pasternack.com/plenum-4.3-10-male-right-angle-to-sma-male-low-pim-cable-12-inch-length-using-spp-250-llpl-pe3c7884-12-p.aspx>

The information contained within this document is accurate to the best of our knowledge and representative of the part described herein. It may be necessary to make modifications to the part and/or the documentation of the part in order to implement improvements. Pasternack Enterprises reserves the right to make such changes as required. Unless otherwise stated, all specifications are nominal. Pasternack Enterprises does not make any representation or warranty regarding the suitability of the part described herein for any particular purpose, and Pasternack Enterprises does not assume liability arising out of the use of any part or document.

# PE3C7884-12 CAD Drawing

Plenum 4.3-10 Male Right Angle to SMA Male Low PIM Cable 12 Inch Length Using SPP-250-LLPL Coax



**NOTES:**

1. CABLES 84" AND UNDER HAVE 1 LABEL CENTERED. CABLES OVER 84" HAVE 2 LABELS, ONE AT EACH END 12" FROM THE END OF CONNECTOR.
2. 6" FROM CABLE END, 1 PLACE. FOR ALL LENGTHS OF CABLE.
3. CABLE ASSEMBLIES SHALL BE TESTED FOR CONTINUITY.

THE INFORMATION CONTAINED IN THIS DRAWING IS THE SOLE PROPERTY OF INFINITE ELECTRONICS, INC. ANY REPRODUCTION IN PART OR WHOLE WITHOUT THE WRITTEN PERMISSION OF INFINITE ELECTRONICS, INC. IS PROHIBITED. THESE COMMODITIES, TECHNOLOGY OR SOFTWARE WERE EXPORTED FROM THE UNITED STATES IN ACCORDANCE WITH THE EXPORT ADMINISTRATION REGULATIONS. DIVERSION CONTRARY TO U.S. LAW PROHIBITED.

UNLESS OTHERWISE SPECIFIED LEADING DIMENSIONS ARE INCHES DIMENSIONS IN [ ] ARE MILLIMETERS

TOLERANCES:  
 X = ±.2 [ .5 ] FRACTIONS  
 XX = ±.02 [ .5 ] ANGLES ± 1°  
 XXX = ±.005 [ .13 ]  
 CABLE LENGTH TOLERANCES:  
 >12 [305] = +1 [25] / -0  
 >60 [1524] = 0 [1524] = +2 [51] / -0  
 >120 [3048] = 0 [3048] = +4 [102] / -0  
 >300 [7620] = 0 [7620] = +6 [152] / -0  
 ALL DIMENSIONS ARE FOR REFERENCE ONLY AND SUBJECT TO CHANGE WITHOUT NOTICE

an INFINITE brand

Website: [www.Pasternack.com](http://www.Pasternack.com)  
 Phone: 1.866.727.8376 | 1.949.261.1920

INTERPRET ALL DIMENSIONS AND TOLERANCES PER ASME Y14.5

SCALE: NONE SHEET: 1 OF 1

DESCRIPTION: PLENUM 4.3-10 MALE RIGHT ANGLE TO SMA MALE LOW PIM CABLE USING SPP-250-LLPL COAX

SIZE: A CAGE CODE: 53919 DRAWN BY: DMAY ITEM NO.: PE3C7884