

SMA Male to SMA Male Cable Using Tinned RG405 Coax



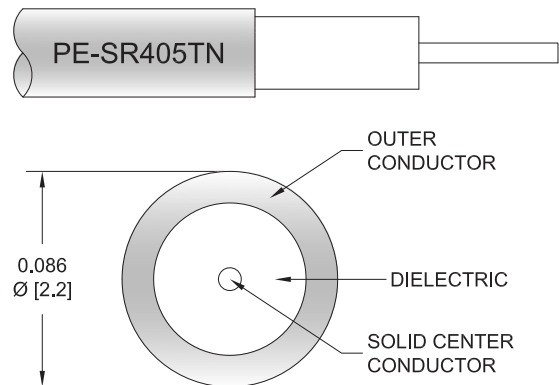
PE3C8355

Configuration

- Connector 1: SMA Male
- Connector 2: SMA Male
- Cable Type: RG405 Tinned
- Coax Flex Type: Semi-Rigid

Features

- Max Frequency 18 GHz



Applications

- General Purpose
- Laboratory Use

Description

Pasternack's PE3C8355 SMA male to SMA male cable using tinned RG405 coax is part of our full line of RF components available for same-day shipping. Pasternack's semi-rigid RF cable assemblies are ideal for high performance applications and can be formed, using proper tooling, to the routing pattern required. This Pasternack SMA to SMA cable assembly has a male to male gender configuration with 50 ohm semi-rigid RG405 tinned coax. The PE3C8355 SMA male to SMA male cable assembly operates to 18 GHz.

Custom versions of most RF cable assemblies can be built and shipped same day. Custom cable assembly lengths can be obtained by specifying the desired length on the web site at time of order or by contacting a sales representative. Other available RF cable assembly value added services include connector orientation or clocking, heat shrink booting and custom labeling. RF testing can also be performed to document the electrical performance of your cable assembly.

Electrical Specifications

Description	Minimum	Typical	Maximum	Units
Frequency Range	DC		18	GHz
VSWR			1.4:1	

Specifications by Frequency

SMA Male to SMA Male Cable Using Tinned RG405 Coax



PE3C8355

Part Number	Length	Description	F1	F2	F3	F4	F5	Units	Weight (lbs)
			Frequency	1000	2000	4500	9000	18000	
PE3C8355	Custom Lengths Available	Insertion Loss (Typ.)	0.22	0.28	0.445	0.735	1.12	dB/ft	
			0.73	0.94	1.46	2.42	3.68	dB/m	
PE3C8355-6	6 inch	Insertion Loss (Typ.)	0.31	0.35	0.43	0.57	0.76	dB	0.023
PE3C8355-12	12 inch	Insertion Loss (Typ.)	0.42	0.49	0.65	0.94	1.32	dB	0.029
PE3C8355-18	18 inch	Insertion Loss (Typ.)	0.53	0.63	0.87	1.31	1.88	dB	0.036
PE3C8355-24	24 inch	Insertion Loss (Typ.)	0.64	0.77	1.09	1.67	2.44	dB	0.043
PE3C8355-36	36 inch	Insertion Loss (Typ.)	0.86	1.06	1.54	2.41	3.56	dB	0.056

The insertion loss data for the base model does not include loss due to the connectors. Each length includes insertion loss due to the connectors.

Loss due to Connector 1:	0.1 dB
Loss due to Connector 2:	0.1 dB
Base Weight:	0.029 pounds
Additional Weight per Inch:	0.00109 pounds

Mechanical Specifications

Cable Assembly

Width/Diameter	0.5 in [12.7 mm]
Weight	0.029 lbs [13.15 g]

Cable

Cable Type	RG405 Tinned
Impedance	50 Ohms
Inner Conductor Type	Solid
Inner Conductor Material and Plating	Copper Clad Steel, Silver
Dielectric Type	PTFE
Number of Shields	1
Shield Layer 1	Tinned Copper
One Time Minimum Bend Radius	0.05 in [1.27 mm]

Connectors

Description	Connector 1	Connector 2
Type	SMA Male	SMA Male
Impedance	50 Ohms	50 Ohms
Configuration	Straight	Straight
Contact Material and Plating	Brass, Gold over Nickel	Brass, Gold over Nickel
Dielectric Type	PTFE	PTFE
Body Material and Plating	Brass, Gold over Nickel	Brass, Gold over Nickel
Coupling Nut Material and Plating	Passivated Stainless Steel	Passivated Stainless Steel
Hex Size	5/16 inch	5/16 inch
Torque	8 in-lbs 0.9 Nm	8 in-lbs 0.9 Nm

SMA Male to SMA Male Cable Using Tinned RG405 Coax



PE3C8355

Environmental Specifications

Compliance Certifications (see [product page](#) for current document)

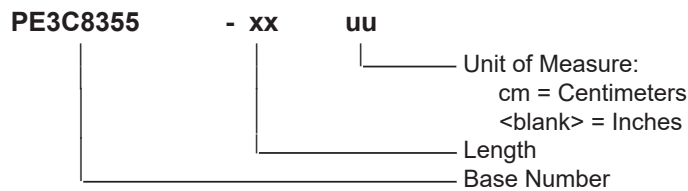
Plotted and Other Data

Notes:

Typical Performance Data

How to Order

Part Number Configuration:



Example: PE3C8355-12 = 12 inches long cable
PE3C8355-100cm = 100 cm long cable

SMA Male to SMA Male Cable Using Tinned RG405 Coax from Pasternack Enterprises has same day shipment for domestic and International orders. Our RF, microwave and millimeter wave products maintain a 99.4% availability and are part of the broadest selection in the industry.

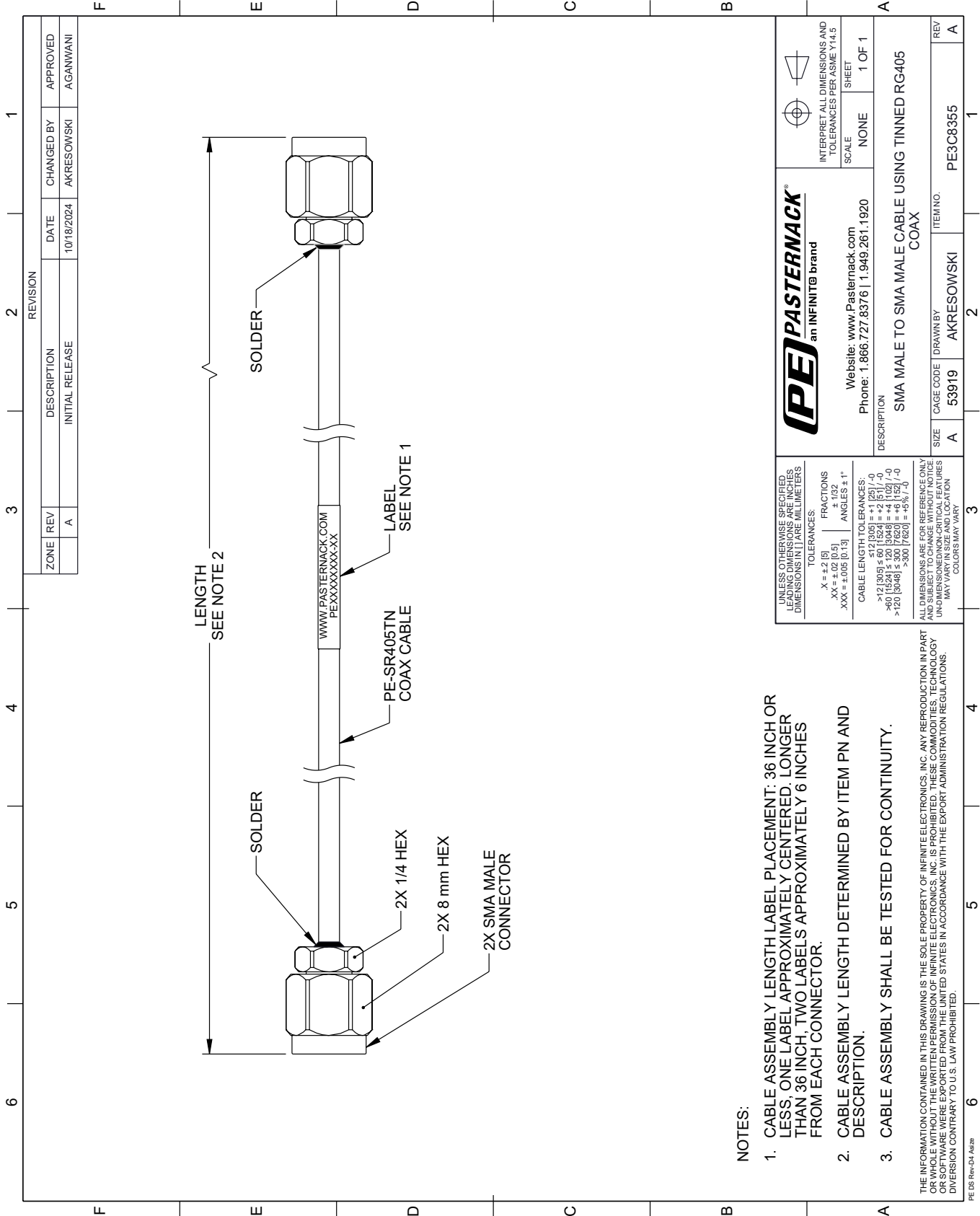
Click the following link (or enter part number in "SEARCH" on website) to obtain additional part information including price, inventory and certifications: [SMA Male to SMA Male Cable Using Tinned RG405 Coax PE3C8355](#)

URL: <https://www.pasternack.com/sma-male-to-sma-male-cable-using-tinned-rg405-pe3c8355-p.aspx>

The information contained within this document is accurate to the best of our knowledge and representative of the part described herein. It may be necessary to make modifications to the part and/or the documentation of the part in order to implement improvements. Pasternack Enterprises reserves the right to make such changes as required. Unless otherwise stated, all specifications are nominal. Pasternack Enterprises does not make any representation or warranty regarding the suitability of the part described herein for any particular purpose, and Pasternack Enterprises does not assume liability arising out of the use of any part or document.

PE3C8355 CAD Drawing

SMA Male to SMA Male Cable Using Tinned RG405 Coax



NOTES:

1. CABLE ASSEMBLY LENGTH LABEL PLACEMENT: 36 INCH OR LESS, ONE LABEL APPROXIMATELY CENTERED, LONGER THAN 36 INCH, TWO LABELS APPROXIMATELY 6 INCHES FROM EACH CONNECTOR.
2. CABLE ASSEMBLY LENGTH DETERMINED BY ITEM PN AND DESCRIPTION.
3. CABLE ASSEMBLY SHALL BE TESTED FOR CONTINUITY.


THE INFORMATION CONTAINED IN THIS DRAWING IS THE SOLE PROPERTY OF INFINITE ELECTRONICS, INC. ANY REPRODUCTION IN PART OR WHOLE WITHOUT THE WRITTEN PERMISSION OF INFINITE ELECTRONICS, INC. IS PROHIBITED. THESE COMMODITIES, TECHNOLOGY OR SOFTWARE WERE EXPORTED FROM THE UNITED STATES IN ACCORDANCE WITH THE EXPORT ADMINISTRATION REGULATIONS. DIVISION CONTRARY TO U.S. LAW PROHIBITED.

UNLESS OTHERWISE SPECIFIED, LEADING DIMENSIONS ARE IN INCHES. DIMENSIONS IN [] ARE MILLIMETERS.

TOLERANCES:
 .X = ±.2 [5] FRACTIONS ± 1/32
 .XX = ±.02 [0.5] ± 1/32
 .XXX = ±.005 [0.13] ANGLES ± 1°

CABLE LENGTH TOLERANCES:
 <12 [305] ≤ 60 [1524] = +2 [51] / -0
 >60 [1524] ≤ 120 [3048] = +4 [102] / -0
 >120 [3048] ≤ 300 [7620] = +5 [127] / -0

ALL DIMENSIONS ARE FOR REFERENCE ONLY. UNDIMENSIONED NON-CRITICAL FEATURES MAY VARY IN SIZE AND LOCATION. COLORS MAY VARY.



an INFINITE brand

INTERPRET ALL DIMENSIONS AND TOLERANCES PER ASME Y14.5

SCALE: NONE

SHEET: 1 OF 1

Website: www.Pasternack.com

Phone: 1.866.727.8376 | 1.949.261.1920

DESCRIPTION		SMA MALE TO SMA MALE CABLE USING TINNED RG405 COAX	
SIZE	A	CAGE CODE	53919
DRAWN BY	AKRESOWSKI	ITEM NO.	PE3C8355
REV	A		