



## N Female 4 Hole Flange to SMA Male Cable Using RG405 Coax In 50 CM Length

### RF Cable Assemblies Technical Data Sheet

PE3C8422-50CM

#### Configuration

- Connector 1: N Female 4 Hole Flange
- Connector 2: SMA Male
- Cable Type: RG405

#### Features

- Max Frequency 18 GHz
- Shielding Effectivity > -110 dB
- 69.5% Phase Velocity

#### Applications

- General Purpose
- Laboratory Use

#### Description

Pasternack's PE3C8422-50CM type N female 4 hole flange to SMA male 50 cm cable using RG405 coax is part of our full line of RF components available for same-day shipping. Pasternack's semi-rigid RF cable assemblies are ideal for high performance applications and can be formed, using proper tooling, to the routing pattern required. This Pasternack type N to SMA cable assembly has a female to male gender configuration with 50 ohm semi-rigid RG405 coax. The PE3C8422-50CM type N female to SMA male cable assembly operates to 18 GHz. Our RF cable assembly with type N 4 hole flange interface allows designers to create external connections on their product enclosures, and can be used in a variety of other rack mount and panel mount applications.

Custom versions of most RF cable assemblies can be built and shipped same day. Custom cable assembly lengths can be obtained by specifying the desired length on the web site at time of order or by contacting a sales representative. Other available RF cable assembly value added services include connector orientation or clocking, heat shrink booting and custom labeling. RF testing can also be performed to document the electrical performance of your cable assembly.

Click the following link (or enter part number in "SEARCH" on website) to obtain additional part information including price, inventory and certifications: [N Female 4 Hole Flange to SMA Male Cable Using RG405 Coax In 50 CM Length PE3C8422-50CM](#)



N Female 4 Hole Flange to SMA Male Cable  
Using RG405 Coax In 50 CM Length

RF Cable Assemblies Technical Data Sheet

PE3C8422-50CM

**Electrical Specifications**

Description	Minimum	Typical	Maximum	Units
Frequency Range	DC		18	GHz
VSWR			1.4:1	
Velocity of Propagation		69.5		%
RF Shielding	-110			dB
Capacitance		29.4 [96.46]		pF/ft [pF/m]

**Specifications by Frequency**

Description	F1	F2	F3	F4	F5	Units
Frequency	1	2	4.5	9	18	GHz
Insertion Loss (Typ.)	0.57	0.75	1.16	1.81	2.69	dB

Electrical Specification Notes:

The Insertion Loss data above is based on the performance specifications of the coax and connectors used in this assembly. The Insertion Loss includes an estimated insertion loss of 0.1\*SQRT(FGHz) dB per connector.

**Mechanical Specifications**

**Cable Assembly**

Length\* 19.68 in [499.87 mm]  
Weight 0.117 lbs [53.07 g]

**Cable**

Cable Type RG405  
Impedance 50 Ohms  
Inner Conductor Type Solid  
Inner Conductor Material and Plating Copper Clad Steel, Silver  
Dielectric Type PTFE  
Number of Shields 1  
Outer Conductor Material and Plating Copper  
Repeated Minimum Bend Radius 0.05 in [1.27 mm]

Click the following link (or enter part number in "SEARCH" on website) to obtain additional part information including price, inventory and certifications: [N Female 4 Hole Flange to SMA Male Cable Using RG405 Coax In 50 CM Length PE3C8422-50CM](#)



N Female 4 Hole Flange to SMA Male Cable  
Using RG405 Coax In 50 CM Length

RF Cable Assemblies Technical Data Sheet

PE3C8422-50CM

**Connectors**

Description	Connector 1	Connector 2
Type	N Female 4 Hole Flange	SMA Male
Specification		MIL-STD-348A
Impedance	50 Ohms	50 Ohms
Mating Cycles		500
Contact Material and Plating		Brass, Gold
Contact Plating Specification		50 μin minimum
Dielectric Type		PTFE
Body Material and Plating	Brass, Nickel	Stainless Steel, Gold
Body Plating Specification		10 μin minimum
Coupling Nut Material and Plating		Brass, Nickel
Coupling Nut Plating Specification		100 μin minimum
Hex Size		5/16 inch
Torque		3 in-lbs [0.34 Nm]

**Compliance Certifications** (see [product page](#) for current document)

**Plotted and Other Data**

Notes:

Click the following link (or enter part number in "SEARCH" on website) to obtain additional part information including price, inventory and certifications: [N Female 4 Hole Flange to SMA Male Cable Using RG405 Coax In 50 CM Length PE3C8422-50CM](#)



N Female 4 Hole Flange to SMA Male Cable  
Using RG405 Coax In 50 CM Length

RF Cable Assemblies Technical Data Sheet

PE3C8422-50CM

**How to Order**

Part Number Configuration:

**PE3C8422**

- **xx**

**uu**

Unit of Measure:  
cm = Centimeters  
<blank> = Inches  
Length  
Base Number

Example: PE3C8422-12 = 12 inches long cable  
PE3C8422-100cm = 100 cm long cable

N Female 4 Hole Flange to SMA Male Cable Using RG405 Coax In 50 CM Length from Pasternack Enterprises has same day shipment for domestic and International orders. Our RF, microwave and millimeter wave products maintain a 99.4% availability and are part of the broadest selection in the industry.

Click the following link (or enter part number in "SEARCH" on website) to obtain additional part information including price, inventory and certifications: [N Female 4 Hole Flange to SMA Male Cable Using RG405 Coax In 50 CM Length PE3C8422-50CM](#)

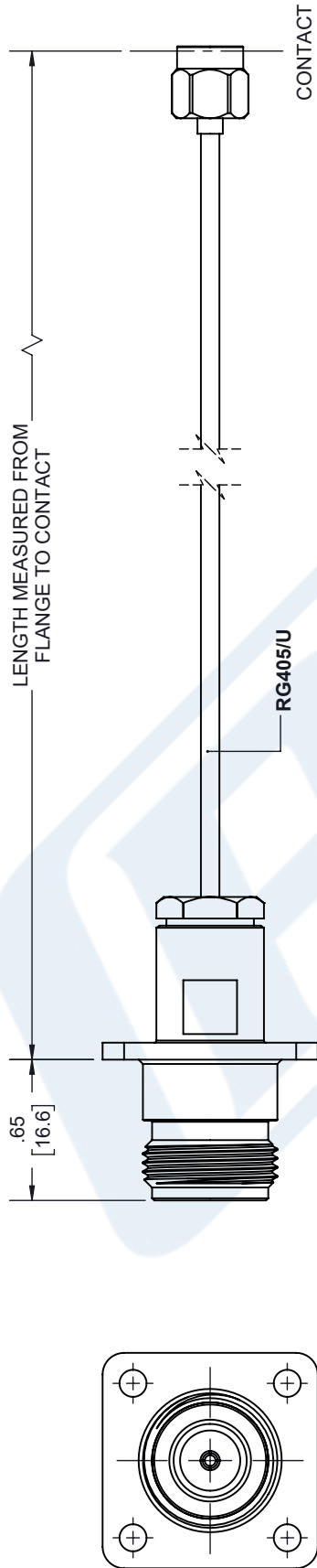
URL: <https://www.pasternack.com/A-female-4-hole-flange-to-sma-male-cable-50-cm-length-using-rg405-pe3c8422-50cm-p.aspx>

The information contained in this document is accurate to the best of our knowledge and representative of the part described herein. It may be necessary to make modifications to the part and/or the documentation of the part, in order to implement improvements. Pasternack reserves the right to make such changes as required. Unless otherwise stated, all specifications are nominal. Pasternack does not make any representation or warranty regarding the suitability of the part described herein for any particular purpose, and Pasternack does not assume any liability arising out of the use of any part or documentation.

# PE3C8422-50CM CAD Drawing

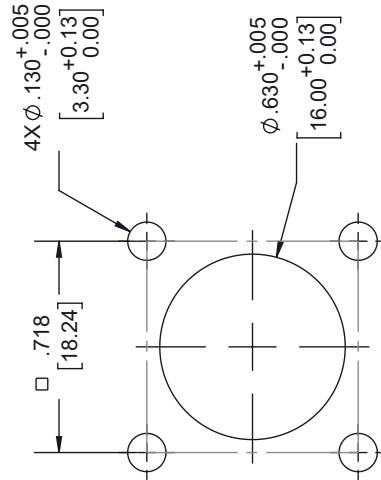
N Female 4 Hole Flange to SMA Male Cable Using RG405 Coax In 50 CM Length

REVISIONS			
REV.	DESCRIPTION	DATE	APPROVED
A	INITIAL RELEASE	11/10/2021	A. GANWANI



**N FEMALE  
4 HOLE FLANGE**

**SMA MALE**



**PATTERN  
MOUNTING HOLE**

UNLESS OTHERWISE SPECIFIED  
LEADING DIMENSIONS ARE INCHES  
DIMENSIONS IN [ ] ARE MILLIMETERS

**TOLERANCES:**

.X = ±.2 [5.08]    FRACTIONS ± 1/32  
.XX = ±.02 [ .51]    ANGLES ± 1°  
.XXX = ±.005 [ .13]

**CABLE LENGTH (L) TOLERANCES:**

L ≤ 12 [305] = +1 [25] / -0  
12 [305] < L ≤ 60 [1524] = +2 [51] / -0  
60 [1524] < L ≤ 120 [3048] = +4 [102] / -0  
120 [3048] < L ≤ 300 [7620] = +6 [152] / -0  
300 [7620] < L = +5% / -0

ALL DIMENSIONS SHOWN  
ARE FOR REFERENCE ONLY.

**PE PASTERNAK®**  
an INFINITE® brand

Pasternack Enterprises, Inc.  
P. O. Box 16759, Irvine, CA 92623.  
Phone: 1.949.261.1920 | 1.866.727.8376  
Fax: 1.949.261.7451  
Website: www.pasternack.com  
E-mail: sales@pasternack.com

SIZE [CAGE CODE] DRAWN BY ITEM NO.  
A 53919 K.DANG PE3C8422

THIRD-ANGLE PROJECTION

THE INFORMATION AND  
DESIGN IN THIS DOCUMENT  
IS THE PROPERTY OF  
PASTERNAK CORPORATION  
ALL RIGHTS RESERVED.

SHEET 1 OF 1

SCALE N/A

REV A