

SSMC Plug to SSMC Plug Right Angle Cable Using RG188-DS Coax, LF Solder



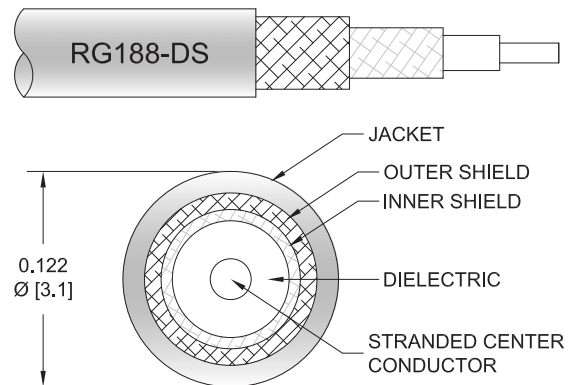
PE3C9174LF

Configuration

- Connector 1: SSMC Plug
- Connector 2: SSMC Plug Right Angle
- Cable Type: RG188-DS
- Coax Flex Type: Flexible

Features

- Max Frequency 10 GHz
- Double Shielded
- PTFE Jacket
- 500 Mating Cycles



Applications

- General Purpose
- Laboratory Use

Description

Pasternack's PE3C9174LF SSMC plug to SSMC plug right angle cable using RG188-DS coax is part of our full line of RF components available for same-day shipping. Pasternack's flexible RF cable assemblies are ideal for applications where tight bends and flexure are required. This Pasternack SSMC to SSMC cable assembly has a plug to plug gender configuration with 50 ohm flexible RG188-DS coax. The PE3C9174LF SSMC plug to SSMC plug cable assembly operates to 10 GHz. The right angle SSMC interface on the RG188-DS cable allows for easier connections in tight spaces. The double shielding of this Pasternack cable assembly provides excellent shielding effectiveness.

Custom versions of most RF cable assemblies can be built and shipped same day. Custom cable assembly lengths can be obtained by specifying the desired length on the web site at time of order or by contacting a sales representative. Other available RF cable assembly value added services include connector orientation or clocking, heat shrink booting and custom labeling. RF testing can also be performed to document the electrical performance of your cable assembly.

Electrical Specifications

| Description | Minimum | Typical | Maximum | Units |
|-----------------|---------|-------------|---------|--------------|
| Frequency Range | DC | | 10 | GHz |
| VSWR | | | 1.4:1 | |
| Capacitance | | 32 [104.99] | | pF/ft [pF/m] |

Specifications by Frequency

SSMC Plug to SSMC Plug Right Angle Cable
Using RG188-DS Coax, LF Solder



PE3C9174LF

| Part Number | Length | Description | F1 | F2 | F3 | F4 | F5 | Units | Weight (lbs) |
|---------------|--------------------------|-----------------------|-----------|------|------|------|------|-------|--------------|
| | | | Frequency | | 500 | 1000 | 2500 | 5000 | |
| PE3C9174LF | Custom Lengths Available | Insertion Loss (Typ.) | 0.2 | 0.3 | 0.48 | 0.79 | 1.33 | dB/ft | |
| | | | 0.65 | 0.99 | 1.59 | 2.6 | 4.37 | dB/m | |
| PE3C9174LF-12 | 12 inch | Insertion Loss (Typ.) | 0.5 | 0.6 | 0.79 | 1.09 | 1.63 | dB | 0.029 |
| PE3C9174LF-24 | 24 inch | Insertion Loss (Typ.) | 0.7 | 0.9 | 1.27 | 1.88 | 2.96 | dB | 0.044 |
| PE3C9174LF-36 | 36 inch | Insertion Loss (Typ.) | 0.9 | 1.2 | 1.75 | 2.67 | 4.29 | dB | 0.059 |
| PE3C9174LF-48 | 48 inch | Insertion Loss (Typ.) | 1.09 | 1.5 | 2.24 | 3.46 | 5.62 | dB | 0.074 |
| PE3C9174LF-60 | 60 inch | Insertion Loss (Typ.) | 1.29 | 1.8 | 2.72 | 4.25 | 6.95 | dB | 0.089 |

The insertion loss data for the base model does not include loss due to the connectors. Each length includes insertion loss due to the connectors.

Loss due to Connector 1: 0.1 dB
 Loss due to Connector 2: 0.2 dB
 Base Weight: 0.029 pounds
 Additional Weight per Inch: 0.00125 pounds

Mechanical Specifications

Cable Assembly

Width/Diameter 0.5 in [12.7 mm]
 Weight 0.029 lbs [13.15 g]

Cable

Cable Type RG188-DS
 Impedance 50 Ohms
 Inner Conductor Type Stranded
 Inner Conductor Material and Plating Copper Clad Steel, Silver
 Dielectric Type PTFE
 Number of Shields 2
 Shield Layer 1 Silver Plated Copper Braid
 Shield Layer 2 Silver Plated Copper Braid
 Jacket Material PTFE, White
 Jacket Diameter 0.118 in [3 mm]

SSMC Plug to SSMC Plug Right Angle Cable
Using RG188-DS Coax, LF Solder



PE3C9174LF

Connectors

| Description | Connector 1 | Connector 2 |
|------------------------------------|------------------------|------------------------|
| Type | SSMC Plug | SSMC Plug Right Angle |
| Impedance | 50 Ohms | 50 Ohms |
| Configuration | Straight | Right Angle |
| Mating Cycles | 500 | 500 |
| Contact Material and Plating | Beryllium Copper, Gold | Beryllium Copper, Gold |
| Contact Plating Specification | MIL-G-45204 | MIL-G-45204 |
| Dielectric Type | Teflon | Teflon |
| Body Material and Plating | Beryllium Copper, Gold | Brass, Gold |
| Body Plating Specification | MIL-G-45204 | MIL-G-45204 |
| Coupling Nut Material and Plating | Beryllium Copper, Gold | Beryllium Copper, Gold |
| Coupling Nut Plating Specification | MIL-G-45207 | MIL-G-45204 |
| Torque | 1.75 in-lbs 0.2 Nm | 1.75 in-lbs 0.2 Nm |

Environmental Specifications

Operating Range Temperature -55 to +165 deg C

Compliance Certifications (see [product page](#) for current document)

Plotted and Other Data

Notes:

SSMC Plug to SSMC Plug Right Angle Cable Using RG188-DS Coax, LF Solder

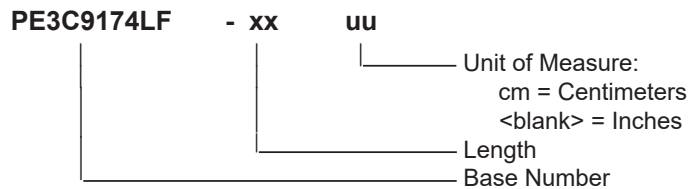


PE3C9174LF

Typical Performance Data

How to Order

Part Number Configuration:



Example: PE3C9174LF-12 = 12 inches long cable
PE3C9174LF-100cm = 100 cm long cable

SSMC Plug to SSMC Plug Right Angle Cable Using RG188-DS Coax, LF Solder from Pasternack Enterprises has same day shipment for domestic and International orders. Our RF, microwave and millimeter wave products maintain a 99.4% availability and are part of the broadest selection in the industry.

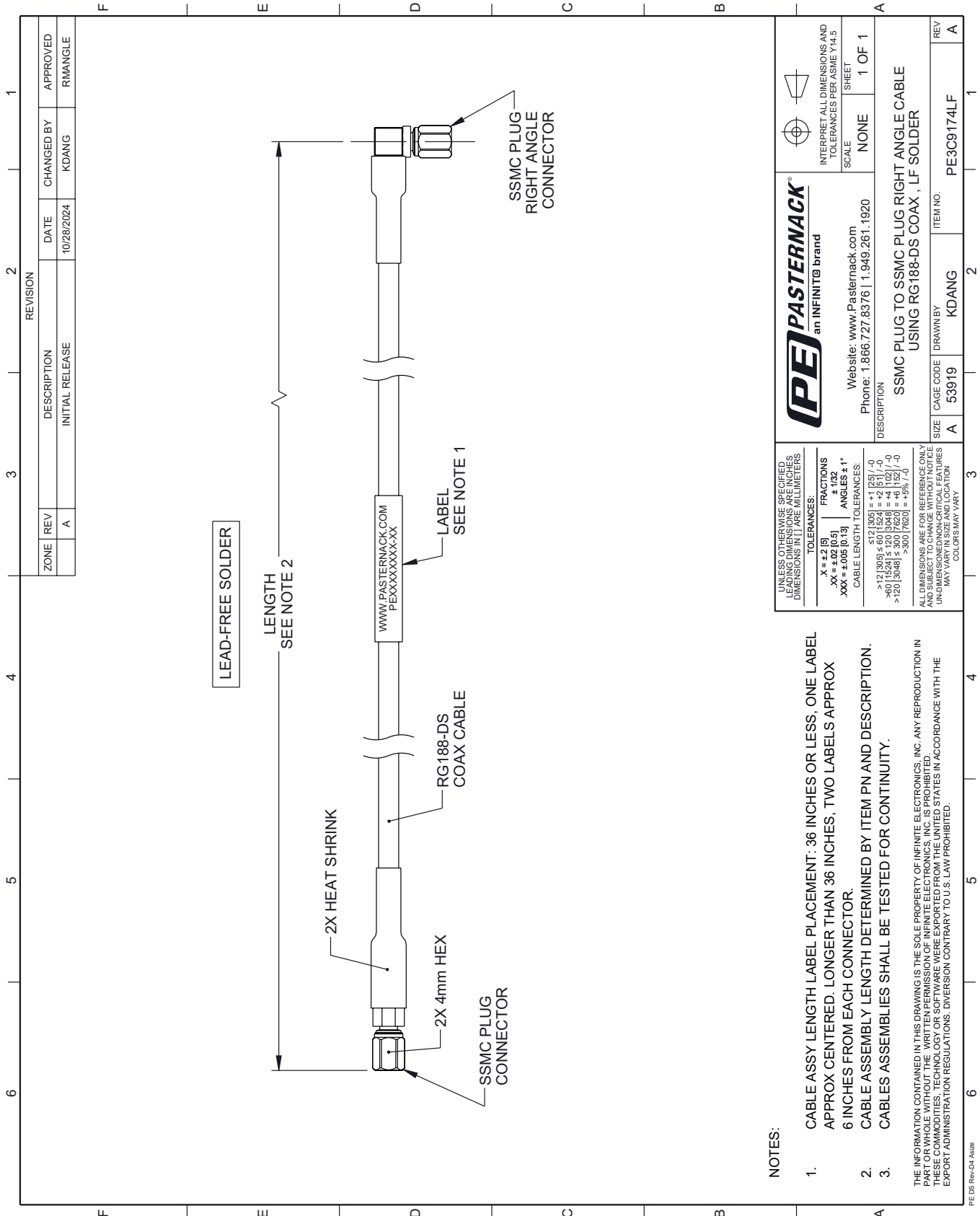
Click the following link (or enter part number in "SEARCH" on website) to obtain additional part information including price, inventory and certifications: [SSMC Plug to SSMC Plug Right Angle Cable Using RG188-DS Coax, LF Solder PE3C9174LF](#)

URL: <https://www.pasternack.com/ssmc-plug-to-ssmc-plug-cable-using-rg188-ds-lf-solder-pe3c9174lf-p.aspx>

The information contained within this document is accurate to the best of our knowledge and representative of the part described herein. It may be necessary to make modifications to the part and/or the documentation of the part in order to implement improvements. Pasternack Enterprises reserves the right to make such changes as required. Unless otherwise stated, all specifications are nominal. Pasternack Enterprises does not make any representation or warranty regarding the suitability of the part described herein for any particular purpose, and Pasternack Enterprises does not assume liability arising out of the use of any part or document.

PE3C9174LF CAD Drawing

SSMC Plug to SSMC Plug Right Angle Cable Using RG188-DS Coax, LF Solder



NOTES:

1. CABLE ASSY LENGTH LABEL PLACEMENT: .36 INCHES OR LESS, ONE LABEL APPROX CENTERED, LONGER THAN .36 INCHES, TWO LABELS APPROX .6 INCHES FROM EACH CONNECTOR.
2. CABLE ASSEMBLY LENGTH DETERMINED BY ITEM PN AND DESCRIPTION.
3. CABLE ASSEMBLIES SHALL BE TESTED FOR CONTINUITY.

THE INFORMATION CONTAINED IN THIS DRAWING IS THE SOLE PROPERTY OF INFINITE ELECTRONICS, INC. ANY REPRODUCTION IN PART OR WHOLE WITHOUT THE WRITTEN PERMISSION OF INFINITE ELECTRONICS, INC. IS PROHIBITED. THESE COMMODITIES, TECHNOLOGY OR SOFTWARE WERE EXPORTED FROM THE UNITED STATES IN ACCORDANCE WITH THE EXPORT ADMINISTRATION REGULATIONS. DIVERSION CONTRARY TO U.S. LAW PROHIBITED.

UNLESS OTHERWISE SPECIFIED, LEADING DIMENSIONS ARE IN INCHES. DIMENSIONS IN [] ARE MILLIMETERS.

TOLERANCES:
 .X = ±.2 [5]
 .XX = ±.02 [0.5]
 .XXX = ±.005 [0.13]
FRACOINS
 ± 1/32
 ANGLES ± 1°
CABLE LENGTH TOLERANCES:
 ≤ 12 [305] ± .60 [1524] = +1 [25] / -0
 > 12 [305] ≤ 60 [1524] = +4 [102] / -0
 > 60 [1524] ≤ 120 [3048] = +4 [102] / -0
 > 120 [3048] ≤ 300 [7620] = +5% / -0

ALL DIMENSIONS ARE FOR REFERENCE ONLY. UNDIMENSIONED NON-CRITICAL FEATURES MAY VARY IN SIZE AND LOCATION. COLORS MAY VARY.



Website: www.Pasternack.com
 Phone: 1.866.727.8376 | 1.949.261.1920

INTERPRET ALL DIMENSIONS AND TOLERANCES PER ASME Y14.5
 SCALE NONE
 SHEET 1 OF 1

DESCRIPTION
SSMC PLUG TO SSMC PLUG RIGHT ANGLE CABLE USING RG188-DS COAX, LF SOLDER

| | | | |
|------|-----------|----------|------------|
| SIZE | CAGE CODE | DRAWN BY | ITEM NO. |
| A | 53919 | KDANG | PE3C9174LF |