

SMA Male to SMA Male Right Angle Low PIM Cable Using PE-SR402AL Coax



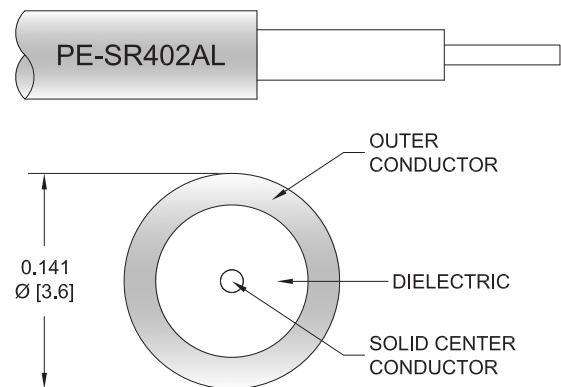
PE3C9470

Configuration

- Connector 1: SMA Male
- Connector 2: SMA Male Right Angle
- Cable Type: PE-SR402AL
- Coax Flex Type: Semi-Rigid

Features

- Max Frequency 6 GHz
- Low PIM: -155 dBc Max
- 69.5% Phase Velocity



Applications

- General Purpose
- Laboratory Use
- Low PIM Applications

Description

Pasternack's PE3C9470 SMA male to SMA male right angle cable using PE-SR402AL coax is part of our full line of RF components available for same-day shipping. Pasternack's semi-rigid RF cable assemblies are ideal for high performance applications and can be formed, using proper tooling, to the routing pattern required. This Pasternack SMA to SMA cable assembly has a male to male gender configuration with 50 ohm semi-rigid PE-SR402AL coax. The PE3C9470 SMA male to SMA male cable assembly operates to 6 GHz. Our low PIM design also offers excellent passive intermodulation performance with PIM levels better than -155 dBc. The right angle SMA interface on the PE-SR402AL cable allows for easier connections in tight spaces.

Custom versions of most RF cable assemblies can be built and shipped same day. Custom cable assembly lengths can be obtained by specifying the desired length on the web site at time of order or by contacting a sales representative. Other available RF cable assembly value added services include connector orientation or clocking, heat shrink booting and custom labeling. RF testing can also be performed to document the electrical performance of your cable assembly.

Electrical Specifications

Description	Minimum	Typical	Maximum	Units
Frequency Range	DC		6	GHz
VSWR			1.4:1	
Velocity of Propagation		69.5		%
Passive Intermodulation IM3 (2x43dBm Tones) at 850 MHz or 1900 MHz			-155	dBc
Dielectric Withstanding Voltage (AC)			750	Vrms

Specifications by Frequency

SMA Male to SMA Male Right Angle Low PIM Cable Using PE-SR402AL Coax



PE3C9470

Part Number	Length	Description	F1	F2	F3	Units	Weight (lbs)
			Frequency	1000	2500	6000	
PE3C9470	Custom Lengths Available	Insertion Loss (Typ.)	0.13	0.185	0.313	dB/ft	
			0.43	0.61	1.03	dB/m	
PE3C9470-6	6 inch	Insertion Loss (Typ.)	0.42	0.45	0.51	dB	0.022
PE3C9470-12	12 inch	Insertion Loss (Typ.)	0.48	0.54	0.67	dB	0.03
PE3C9470-24	24 inch	Insertion Loss (Typ.)	0.61	0.72	0.98	dB	0.048
PE3C9470-36	36 inch	Insertion Loss (Typ.)	0.74	0.91	1.29	dB	0.065
PE3C9470-48	48 inch	Insertion Loss (Typ.)	0.87	1.09	1.61	dB	0.082

The insertion loss data for the base model does not include loss due to the connectors. Each length includes insertion loss due to the connectors.

Loss due to Connector 1:	0.15 dB
Loss due to Connector 2:	0.2 dB
Base Weight:	0.03 pounds
Additional Weight per Inch:	0.00144 pounds

Mechanical Specifications

Cable Assembly

Width/Diameter	0.5 in [12.7 mm]
Weight	0.03 lbs [13.61 g]

Cable

Cable Type	PE-SR402AL
Impedance	50 Ohms
Inner Conductor Type	Solid
Inner Conductor Material and Plating	Copper Clad Steel, Silver
Dielectric Type	PTFE
Number of Shields	1
Outer Conductor 1 Material and Plating	Tinned Aluminum
Repeated Minimum Bend Radius	0.15 in [3.81 mm]

Connectors

Description	Connector 1	Connector 2
Type	SMA Male	SMA Male Right Angle
Impedance	50 Ohms	50 Ohms
Configuration	Straight	Right Angle
Contact Material and Plating	Brass, Silver	Brass, Silver
Dielectric Type	PTFE	PTFE
Body Material and Plating	Brass, Tri-Metal	Brass, Tri-Metal
Coupling Nut Material and Plating	Brass, Tri-Metal	Brass, Tri-Metal

Environmental Specifications

Operating Range Temperature	-40 to +125 deg C
-----------------------------	-------------------

SMA Male to SMA Male Right Angle Low PIM Cable Using PE-SR402AL Coax



PE3C9470

Compliance Certifications (see [product page](#) for current document)

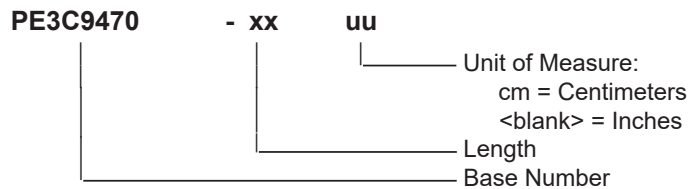
Plotted and Other Data

Notes:

Typical Performance Data

How to Order

Part Number Configuration:



Example: PE3C9470-12 = 12 inches long cable
PE3C9470-100cm = 100 cm long cable

SMA Male to SMA Male Right Angle Low PIM Cable Using PE-SR402AL Coax from Pasternack Enterprises has same day shipment for domestic and International orders. Our RF, microwave and millimeter wave products maintain a 99.4% availability and are part of the broadest selection in the industry.

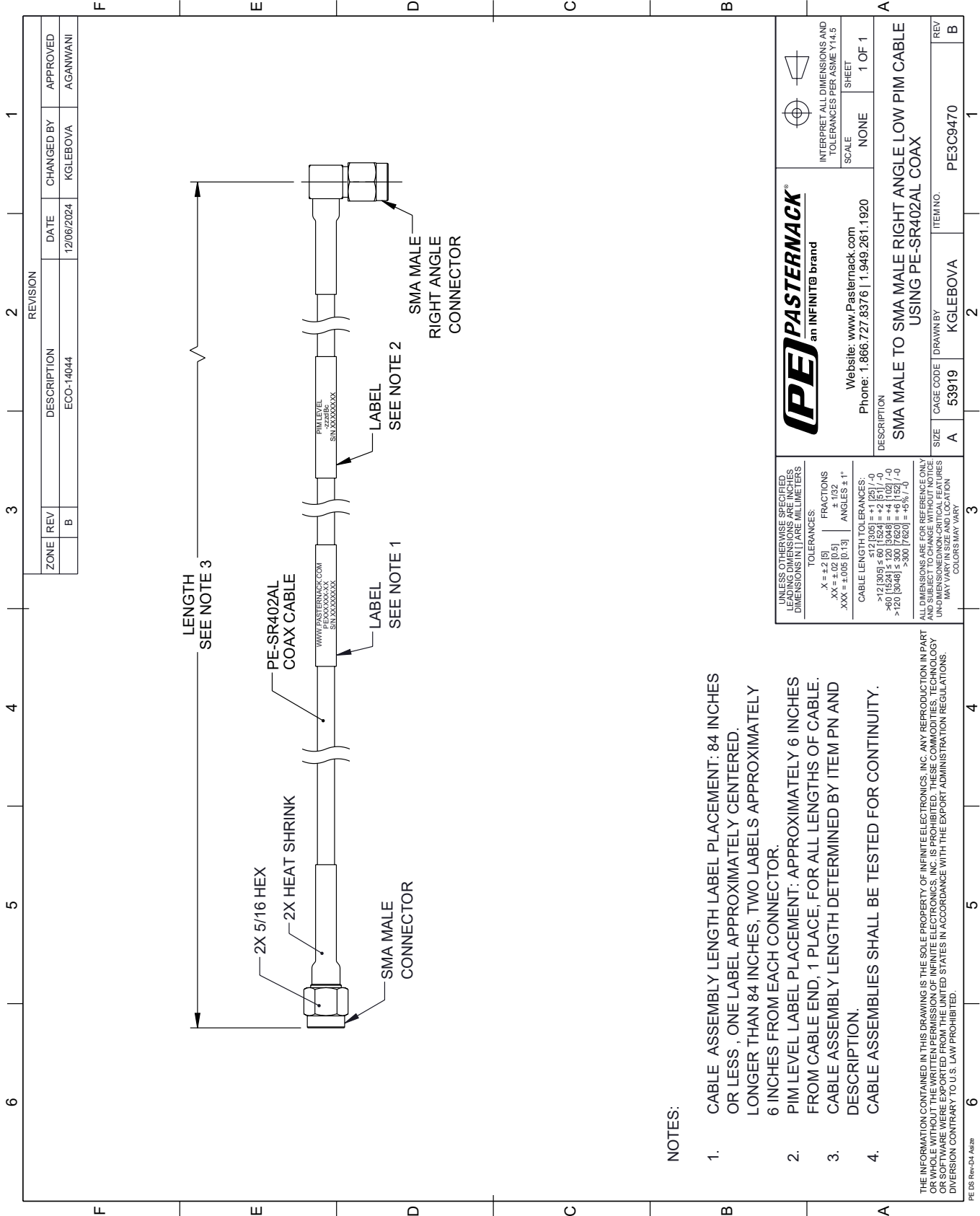
Click the following link (or enter part number in "SEARCH" on website) to obtain additional part information including price, inventory and certifications: [SMA Male to SMA Male Right Angle Low PIM Cable Using PE-SR402AL Coax PE3C9470](#)

URL: <https://www.pasternack.com/sma-male-to-sma-male-low-pim-cable-using-pe-sr402al-pe3c9470-p.aspx>

The information contained within this document is accurate to the best of our knowledge and representative of the part described herein. It may be necessary to make modifications to the part and/or the documentation of the part in order to implement improvements. Pasternack Enterprises reserves the right to make such changes as required. Unless otherwise stated, all specifications are nominal. Pasternack Enterprises does not make any representation or warranty regarding the suitability of the part described herein for any particular purpose, and Pasternack Enterprises does not assume liability arising out of the use of any part or document.

PE3C9470 CAD Drawing

SMA Male to SMA Male Right Angle Low PIM Cable Using PE-SR402AL Coax



NOTES:

1. CABLE ASSEMBLY LENGTH LABEL PLACEMENT: 84 INCHES OR LESS, ONE LABEL APPROXIMATELY CENTERED. LONGER THAN 84 INCHES, TWO LABELS APPROXIMATELY 6 INCHES FROM EACH CONNECTOR.
2. PIM LEVEL LABEL PLACEMENT: APPROXIMATELY 6 INCHES FROM CABLE END, 1 PLACE, FOR ALL LENGTHS OF CABLE.
3. CABLE ASSEMBLY LENGTH DETERMINED BY ITEM PN AND DESCRIPTION.
4. CABLE ASSEMBLIES SHALL BE TESTED FOR CONTINUITY.

UNLESS OTHERWISE SPECIFIED, LEADING DIMENSIONS ARE IN INCHES. DIMENSIONS IN [] ARE MILLIMETERS.

TOLERANCES:
 .X = +.2 [5]
 .XX = ±.02 [0.5]
 .XXX = ±.005 [0.13]

FRACTIONS: ±.132
 ANGLES ± 1°

CABLE LENGTH TOLERANCES:
 >12 [305] ≤ 60 [1524] = +.1 [25] / -0
 >60 [1524] ≤ 120 [3048] = +.4 [102] / -0
 >120 [3048] ≤ 300 [7620] = +.6 [152] / -0

ALL DIMENSIONS ARE FOR REFERENCE ONLY. DIMENSIONS OF PARTS ARE GOVERNED BY THE DRAWING. UNLESS OTHERWISE SPECIFIED, DIMENSIONS ARE IN INCHES. DIMENSIONS IN [] ARE MILLIMETERS. COLORS MAY VARY.

THE INFORMATION CONTAINED IN THIS DRAWING IS THE SOLE PROPERTY OF INFINITE ELECTRONICS, INC. ANY REPRODUCTION IN PART OR WHOLE WITHOUT THE WRITTEN PERMISSION OF INFINITE ELECTRONICS, INC. IS PROHIBITED. THESE COMMODITIES, TECHNOLOGY OR SOFTWARE WERE EXPORTED FROM THE UNITED STATES IN ACCORDANCE WITH THE EXPORT ADMINISTRATION REGULATIONS. DIVISION CONTRARY TO U.S. LAW PROHIBITED.

PE DS Rev-04 Add2