

MMCX Plug Right Angle to SMA Female Bulkhead Cable Using PE-P086 Coax



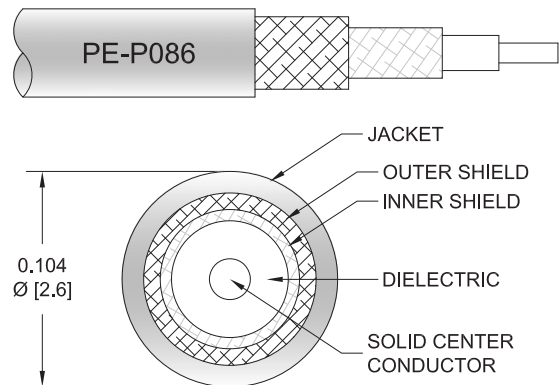
PE3C9581

Configuration

- Connector 1: MMCX Plug Right Angle
- Connector 2: SMA Female Bulkhead
- Cable Type: PE-P086
- Coax Flex Type: Flexible

Features

- Max Frequency 6 GHz
- Shielding Effectivity > 110 dB
- 70% Phase Velocity
- Double Shielded
- FEP Jacket



Applications

- General Purpose
- Laboratory Use

Description

Pasternack's PE3C9581 MMCX plug right angle to SMA female bulkhead cable using PE-P086 coax is part of our full line of RF components available for same-day shipping. Pasternack's flexible RF cable assemblies are ideal for applications where tight bends and flexure are required. This Pasternack MMCX to SMA cable assembly has a plug to female gender configuration with 50 ohm flexible PE-P086 coax. The PE3C9581 MMCX plug to SMA female cable assembly operates to 6 GHz. The right angle MMCX interface on the PE-P086 cable allows for easier connections in tight spaces. Our RF cable assembly with SMA bulkhead interface allows designers to create external connections on their product enclosures, and can be used in a variety of other rack mount and panel mount applications. The double shielding of this Pasternack cable assembly provides excellent shielding effectiveness of better than 110 dB.

Custom versions of most RF cable assemblies can be built and shipped same day. Custom cable assembly lengths can be obtained by specifying the desired length on the web site at time of order or by contacting a sales representative. Other available RF cable assembly value added services include connector orientation or clocking, heat shrink booting and custom labeling. RF testing can also be performed to document the electrical performance of your cable assembly.

Electrical Specifications

Description	Minimum	Typical	Maximum	Units
Frequency Range	DC		6	GHz
VSWR			1.4:1	
Velocity of Propagation		70		%
RF Shielding	110			dB
Capacitance		29.4 [96.46]		pF/ft [pF/m]

Specifications by Frequency

MMCX Plug Right Angle to SMA Female Bulkhead Cable Using PE-P086 Coax



PE3C9581

Part Number	Length	Description	F1	F2	F3	Units	Weight (lbs)
			Frequency	1000	2500	6000	
PE3C9581	Custom Lengths Available	Insertion Loss (Typ.)	0.211	0.338	0.551	dB/ft	
			0.7	1.11	1.81	dB/m	
PE3C9581-6	6 inch	Insertion Loss (Typ.)	0.41	0.47	0.58	dB	0.019
PE3C9581-12	12 inch	Insertion Loss (Typ.)	0.52	0.64	0.86	dB	0.025
PE3C9581-24	24 inch	Insertion Loss (Typ.)	0.73	0.98	1.41	dB	0.039
PE3C9581-36	36 inch	Insertion Loss (Typ.)	0.94	1.32	1.96	dB	0.052
PE3C9581-48	48 inch	Insertion Loss (Typ.)	1.15	1.66	2.51	dB	0.065

The insertion loss data for the base model does not include loss due to the connectors. Each length includes insertion loss due to the connectors.

Loss due to Connector 1:	0.2 dB
Loss due to Connector 2:	0.1 dB
Base Weight:	0.025 pounds
Additional Weight per Inch:	0.00109 pounds

Mechanical Specifications

Cable Assembly

Width/Diameter	0.5 in [12.7 mm]
Weight	0.025 lbs [11.34 g]

Cable

Cable Type	PE-P086
Impedance	50 Ohms
Inner Conductor Type	Solid
Inner Conductor Material and Plating	Copper Clad Steel, Silver
Dielectric Type	PTFE
Number of Shields	2
Shield Layer 1	Silver Plated Copper Tape
Shield Layer 2	Silver Plated Copper Braid
Jacket Material	FEP, Blue
Jacket Diameter	0.104 in [2.64 mm]
Repeated Minimum Bend Radius	0.5 in [12.7 mm]

Connectors

Description	Connector 1	Connector 2
Type	MMCX Plug Right Angle	SMA Female Bulkhead
Impedance	50 Ohms	50 Ohms
Configuration	Right Angle	Straight
Contact Material and Plating	Phosphor Bronze, Gold over Nickel	Beryllium Copper, Gold over Nickel
Dielectric Type	PTFE	PTFE
Body Material and Plating	Brass, Gold over Nickel	Brass, Gold over Nickel

MMCX Plug Right Angle to SMA Female Bulkhead Cable Using PE-P086 Coax



PE3C9581

Environmental Specifications

Compliance Certifications (see [product page](#) for current document)

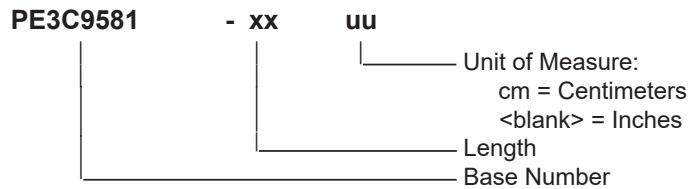
Plotted and Other Data

Notes:

Typical Performance Data

How to Order

Part Number Configuration:



Example: PE3C9581-12 = 12 inches long cable
PE3C9581-100cm = 100 cm long cable

MMCX Plug Right Angle to SMA Female Bulkhead Cable Using PE-P086 Coax from Pasternack Enterprises has same day shipment for domestic and International orders. Our RF, microwave and millimeter wave products maintain a 99.4% availability and are part of the broadest selection in the industry.

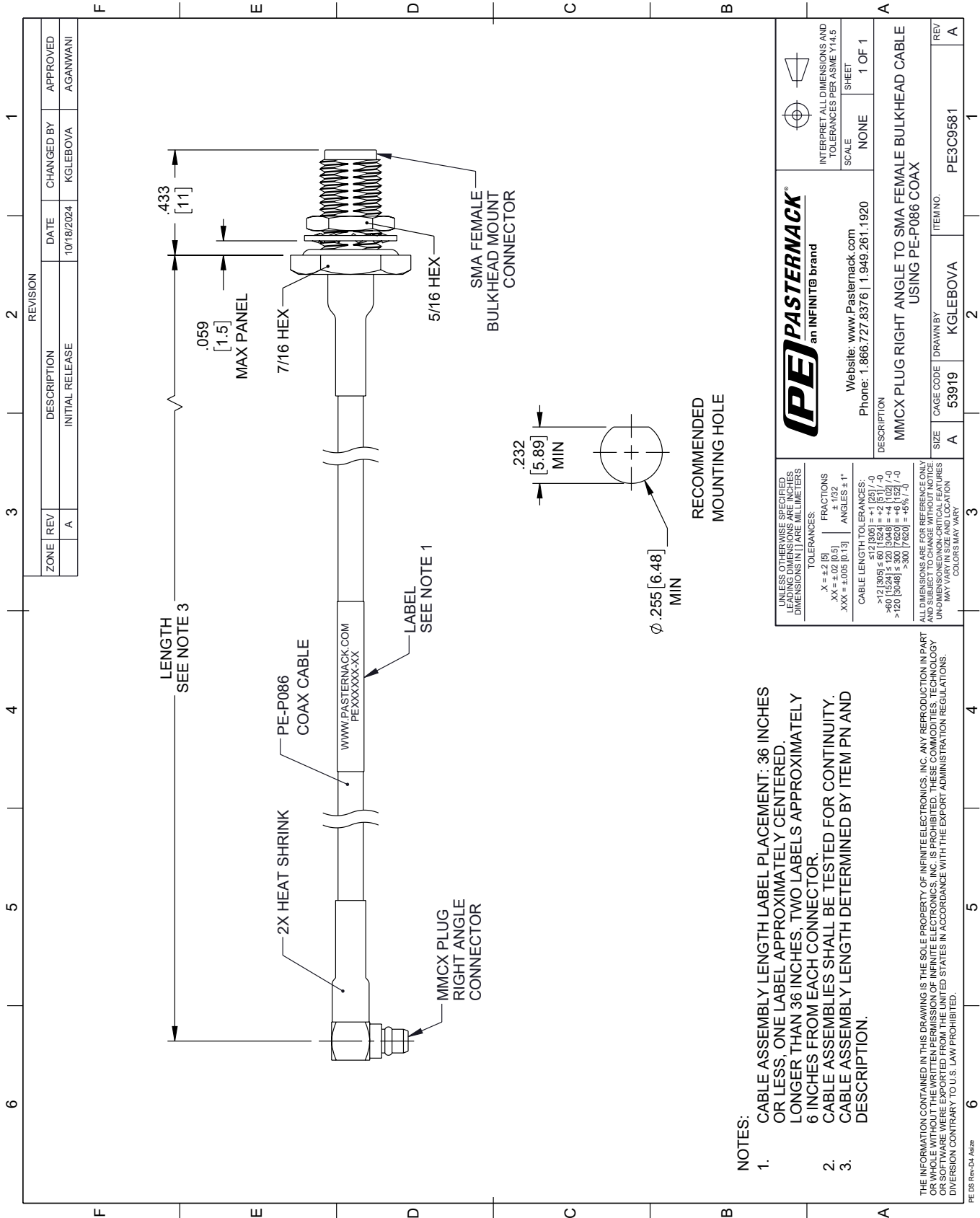
Click the following link (or enter part number in "SEARCH" on website) to obtain additional part information including price, inventory and certifications: [MMCX Plug Right Angle to SMA Female Bulkhead Cable Using PE-P086 Coax PE3C9581](#)

URL: <https://www.pasternack.com/mmcx-plug-right-angle-to-sma-female-bulkhead-cable-using-pe-p086-pe3c9581-p.aspx>

The information contained within this document is accurate to the best of our knowledge and representative of the part described herein. It may be necessary to make modifications to the part and/or the documentation of the part in order to implement improvements. Pasternack Enterprises reserves the right to make such changes as required. Unless otherwise stated, all specifications are nominal. Pasternack Enterprises does not make any representation or warranty regarding the suitability of the part described herein for any particular purpose, and Pasternack Enterprises does not assume liability arising out of the use of any part or document.

PE3C9581 CAD Drawing

MMCX Plug Right Angle to SMA Female Bulkhead Cable Using PE-P086 Coax



NOTES:

1. CABLE ASSEMBLY LENGTH LABEL PLACEMENT: 36 INCHES OR LESS, ONE LABEL APPROXIMATELY CENTERED, LONGER THAN 36 INCHES, TWO LABELS APPROXIMATELY 6 INCHES FROM EACH CONNECTOR.
2. CABLE ASSEMBLIES SHALL BE TESTED FOR CONTINUITY.
3. CABLE ASSEMBLY LENGTH DETERMINED BY ITEM PN AND DESCRIPTION.

THE INFORMATION CONTAINED IN THIS DRAWING IS THE SOLE PROPERTY OF INFINITE ELECTRONICS, INC. ANY REPRODUCTION IN PART OR WHOLE WITHOUT THE WRITTEN PERMISSION OF INFINITE ELECTRONICS, INC. IS PROHIBITED. THESE COMMODITIES, TECHNOLOGY OR SOFTWARE WERE EXPORTED FROM THE UNITED STATES IN ACCORDANCE WITH THE EXPORT ADMINISTRATION REGULATIONS. DIVERSION CONTRARY TO U.S. LAW PROHIBITED.

UNLESS OTHERWISE SPECIFIED, LEADING DIMENSIONS ARE IN INCHES. DIMENSIONS IN [] ARE MILLIMETERS.

TOLERANCES:
 .X = ±.2 [5] FRACTIONS ± 1/32
 .XX = ±.02 [0.5] ANGLES ± 1°
 .XXX = ±.005 [0.13]

CABLE LENGTH TOLERANCES:
 ≤ 12 [304.8] ±.005 [0.127] / -0
 > 12 [304.8] ≤ 60 [1524] ±.01 [0.254] / -0
 > 60 [1524] ≤ 120 [3048] ±.02 [0.508] / -0
 > 120 [3048] ±.03 [0.762] ±.01 [0.254] / -0

ALL DIMENSIONS ARE FOR REFERENCE ONLY. UNDIMENSIONED NON-CRITICAL FEATURES MAY VARY IN SIZE AND LOCATION. COLORS MAY VARY.

PE PASTERNAK
 an INFINIT[®] brand

Website: www.Pasternack.com
 Phone: 1.866.727.8376 | 1.949.261.1920

INTERPRET ALL DIMENSIONS AND TOLERANCES PER ASME Y14.5

SCALE: NONE
 SHEET: 1 OF 1

DESCRIPTION		ITEM NO.	
MMCX PLUG RIGHT ANGLE TO SMA FEMALE BULKHEAD CABLE USING PE-P086 COAX		PE3C9581	
SIZE	CAGE CODE	DRAWN BY	REV
A	53919	KGLEBOVA	A