

## Plenum N Male to N Female Low PIM Cable 200 CM Length Using SPP-375-LLPL Coax



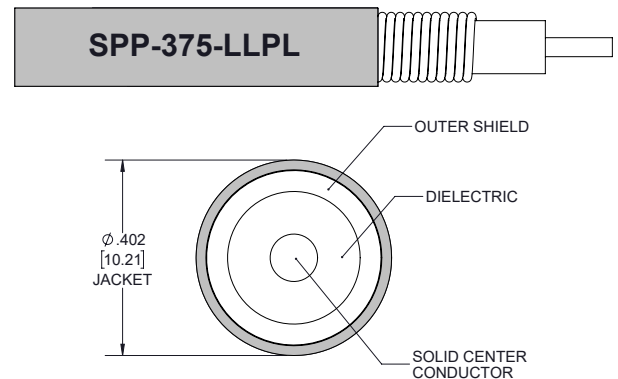
### PE3C9602-200CM

#### Configuration

- Connector 1: N Male
- Connector 2: N Female
- Cable Type: SPP-375-LLPL
- Coax Flex Type: Corrugated

#### Features

- Max Frequency 6 GHz
- Low PIM: -160 dBc Max
- Shielding Effectivity > 100 dB
- 76% Phase Velocity
- FEP Jacket



#### Applications

- General Purpose
- Laboratory Use
- Low PIM Applications

#### Description

Pasternack's PE3C9602-200CM type N male to type N female 200 cm cable using SPP-375-LLPL coax is part of our full line of RF components available for same-day shipping. Pasternack's corrugated RF cable assemblies are ideal for applications where durability and high power are needed. This Pasternack type N to type N cable assembly has a male to female gender configuration with 50 ohm corrugated SPP-375-LLPL coax. The PE3C9602-200CM type N male to type N female cable assembly operates to 6 GHz. Our low PIM design also offers excellent passive intermodulation performance with PIM levels better than -160 dBc.

Custom versions of most RF cable assemblies can be built and shipped same day. Custom cable assembly lengths can be obtained by specifying the desired length on the web site at time of order or by contacting a sales representative. Other available RF cable assembly value added services include connector orientation or clocking, heat shrink booting and custom labeling. RF testing can also be performed to document the electrical performance of your cable assembly.

#### Electrical Specifications

Description	Minimum	Typical	Maximum	Units
Frequency Range	DC		6	GHz
VSWR			1.4:1	
Velocity of Propagation		76		%
RF Shielding	100			dB
Passive Intermodulation IM3 (2x43dBm Tones) at 850 MHz or 1900 MHz			-160	dBc
Capacitance		26.2 [85.96]		pF/ft [pF/m]
Inductance		0.067 [0.22]		uH/ft [uH/m]
DC Resistance Inner Conductor		1.3 [4.27]		Ohms/1000ft [Ohms/Km]

#### Specifications by Frequency

Plenum N Male to N Female Low PIM Cable  
200 CM Length Using SPP-375-LLPL Coax



**PE3C9602-200CM**

Part Number	Length	Description	F1	F2	F3	F4	Units	Weight (lbs)
			Frequency	500	1000	2500	6000	
PE3C9602	Custom Lengths Available	Insertion Loss (Typ.)	0.028	0.038	0.064	0.102	dB/ft	
			0.1	0.13	0.21	0.34	dB/m	
PE3C9602-24	24 In	Insertion Loss (Typ.)	0.52	0.54	0.59	0.67	dB	0.383
PE3C9602-48	48 In	Insertion Loss (Typ.)	0.58	0.62	0.72	0.87	dB	0.609
PE3C9602-60	60 In	Insertion Loss (Typ.)	0.6	0.65	0.78	0.97	dB	0.722
PE3C9602-150CM	150 CM	Insertion Loss (Typ.)	0.6	0.65	0.78	0.97	dB	0.713
PE3C9602-200CM	200 CM	Insertion Loss (Typ.)	0.65	0.71	0.88	1.13	dB	0.898

The insertion loss data for the base model does not include loss due to the connectors. Each length includes insertion loss due to the connectors.

Loss due to Connector 1: 0.1 dB  
 Loss due to Connector 2: 0.36 dB  
 Base Weight: 0.269 pounds  
 Additional Weight per Inch: 0.00942 pounds

**Mechanical Specifications**

**Cable Assembly**

Length 78.7402 in [200 cm]  
 Width/Diameter .5 in [12.7 mm]  
 Weight 0.898 lbs [407.33 g]

**Cable**

Cable Type SPP-375-LLPL  
 Impedance 50 Ohms  
 Inner Conductor Type Solid  
 Inner Conductor Material and Plating Copper Clad Aluminum  
 Dielectric Type Microporous PTFE  
 Number of Shields 1  
 Outer Conductor 1 Material and Plating Copper  
 Jacket Material FEP, Blue  
 Jacket Diameter 0.402 in [10.21 mm]  
 One Time Minimum Bend Radius 1.25 in [31.75 mm]  
 Bending Moment 1.7 lbs-ft [2.31 N-m]

Plenum N Male to N Female Low PIM Cable  
200 CM Length Using SPP-375-LLPL Coax



## PE3C9602-200CM

### Connectors

Description	Connector 1	Connector 2
Type	N Male	N Female
Impedance	50 Ohms	50 Ohms
Configuration	Straight	Straight
Mating Cycles		500
Contact Material and Plating	Brass, Silver	Phosphor Bronze, Silver
Contact Plating Specification	200 µin	200 µin
Dielectric Type	PTFE	PTFE
Outer Conductor Material and Plating	Brass, Tri-Metal	Brass, Tri-Metal
Outer Conductor Plating Specification	100 µin	80 µin
Body Material and Plating		Brass, Tri-Metal
Body Plating Specification		80 µin
Coupling Nut Material and Plating	Brass, Tri-Metal	
Coupling Nut Plating Specification	100 µin	
Torque	9.74 in-lbs 1.1 Nm	6 in-lbs 0.68 Nm

### Environmental Specifications

Operating Range Temperature -40 to +125 deg C

**Compliance Certifications** (see [product page](#) for current document)

### Plotted and Other Data

Notes:

Plenum N Male to N Female Low PIM Cable  
200 CM Length Using SPP-375-LLPL Coax



## PE3C9602-200CM

### Typical Performance Data

### How to Order

Part Number Configuration:

**PE3C9602**

**- xx**

**uu**

Unit of Measure:

cm = Centimeters

<blank> = Inches

Length

Base Number

Example: PE3C9602-12 = 12 inches long cable  
PE3C9602-100cm = 100 cm long cable

Plenum N Male to N Female Low PIM Cable 200 CM Length Using SPP-375-LLPL Coax from Pasternack Enterprises has same day shipment for domestic and International orders. Our RF, microwave and millimeter wave products maintain a 99.4% availability and are part of the broadest selection in the industry.

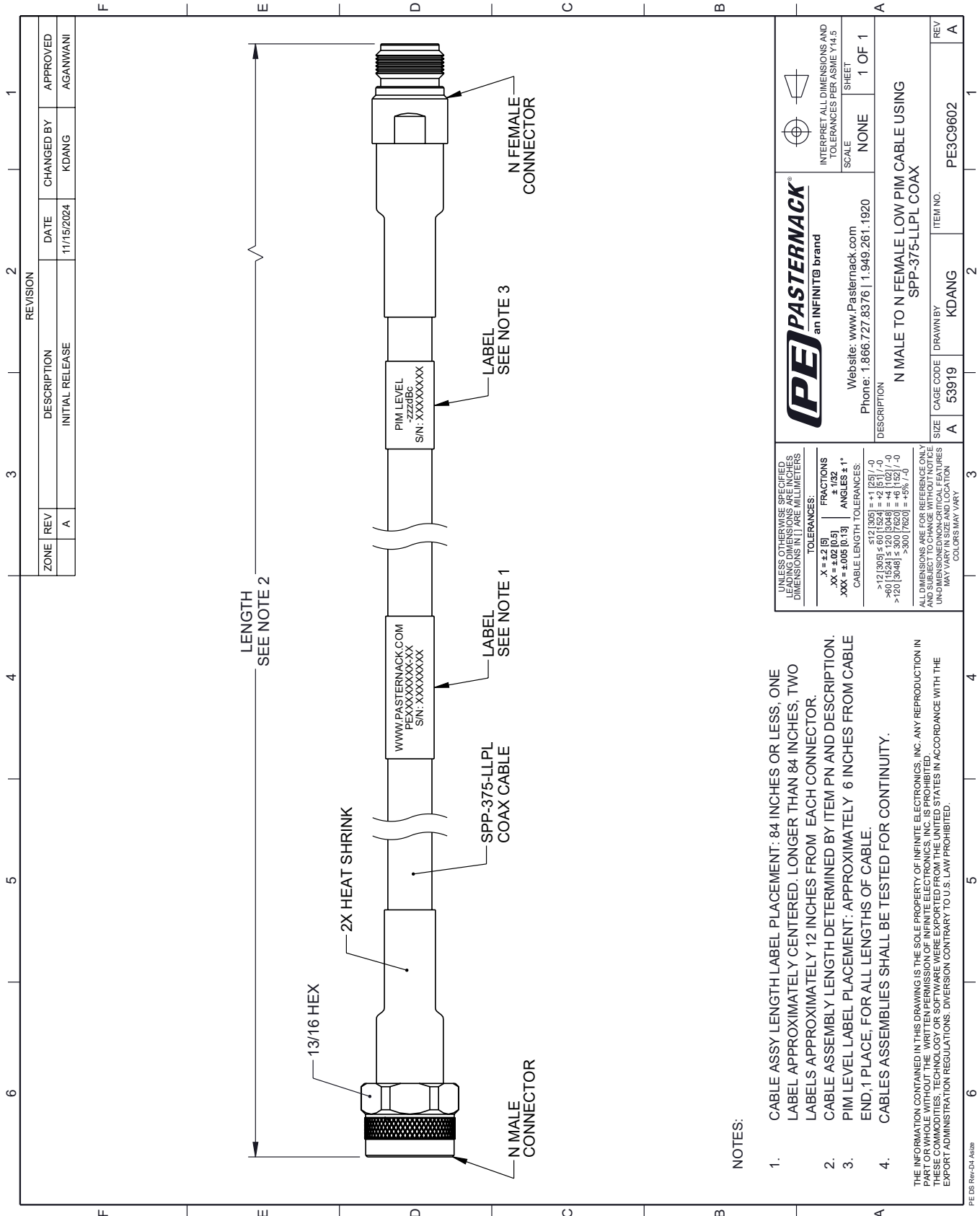
Click the following link (or enter part number in "SEARCH" on website) to obtain additional part information including price, inventory and certifications: [Plenum N Male to N Female Low PIM Cable 200 CM Length Using SPP-375-LLPL Coax PE3C9602-200CM](https://www.pasternack.com/plenum-n-male-to-n-female-low-pim-cable-200-cm-length-using-spp-375-llpl-coax-pe3c9602-200cm)

URL: <https://www.pasternack.com/plenum-n-male-to-n-female-low-pim-cable-200-cm-length-using-spp-375-llpl-pe3c9602-200cm-p.aspx>

The information contained within this document is accurate to the best of our knowledge and representative of the part described herein. It may be necessary to make modifications to the part and/or the documentation of the part in order to implement improvements. Pasternack Enterprises reserves the right to make such changes as required. Unless otherwise stated, all specifications are nominal. Pasternack Enterprises does not make any representation or warranty regarding the suitability of the part described herein for any particular purpose, and Pasternack Enterprises does not assume liability arising out of the use of any part or document.

# PE3C9602-200CM CAD Drawing

Plenum N Male to N Female Low PIM Cable 200 CM Length Using SPP-375-LLPL Coax



REVISION		DATE	CHANGED BY	APPROVED
ZONE	REV			
	A	11/15/2024	KDANG	AGANWANI
DESCRIPTION				
INITIAL RELEASE				

		INTERPRET ALL DIMENSIONS AND TOLERANCES PER ASME Y14.5 SCALE NONE SHEET 1 OF 1	
Website: www.Pasternack.com Phone: 1.866.727.8376   1.949.261.1920		DESCRIPTION N MALE TO N FEMALE LOW PIM CABLE USING SPP-375-LLPL COAX	
SIZE	A	CAGE CODE	53919
DRAWN BY	KDANG	ITEM NO.	PE3C9602

- NOTES:**
- CABLE ASSY LENGTH LABEL PLACEMENT: 84 INCHES OR LESS, ONE LABEL APPROXIMATELY CENTERED. LONGER THAN 84 INCHES, TWO LABELS APPROXIMATELY 12 INCHES FROM EACH CONNECTOR.
  - CABLE ASSEMBLY LENGTH DETERMINED BY ITEM PN AND DESCRIPTION.
  - PIM LEVEL LABEL PLACEMENT: APPROXIMATELY 6 INCHES FROM CABLE END, 1 PLACE, FOR ALL LENGTHS OF CABLE.
  - CABLES ASSEMBLIES SHALL BE TESTED FOR CONTINUITY.
- ALL DIMENSIONS ARE FOR REFERENCE ONLY  
 UNLESS OTHERWISE SPECIFIED  
 LEADING DIMENSIONS ARE IN INCHES  
 DIMENSIONS IN [ ] ARE MILLIMETERS
- TOLERANCES:**  
 .X = ±.2 [5]  
 .XX = ±.02 [0.5]  
 .XXX = ±.005 [0.13]
- FRACTIONS**  
 ± 1/32
- ANGLES** ± 1°
- CABLE LENGTH TOLERANCES:**  
 <12 [305] ±.60 [1524] = +1 [25] / -0  
 >12 [305] ±.60 [1524] = +2 [51] / -0  
 >40 [1024] ±.120 [3048] = +4 [102] / -0  
 >120 [3048] ±.300 [7620] = +5% / -0
- ALL DIMENSIONS ARE FOR REFERENCE ONLY  
 UNLESS OTHERWISE SPECIFIED  
 UNDIMENSIONED NON-CRITICAL FEATURES  
 MAY VARY IN SIZE AND LOCATION  
 COLORS MAY VARY

THE INFORMATION CONTAINED IN THIS DRAWING IS THE SOLE PROPERTY OF INFINITE ELECTRONICS, INC. ANY REPRODUCTION IN PART OR WHOLE WITHOUT THE WRITTEN PERMISSION OF INFINITE ELECTRONICS, INC. IS PROHIBITED. THESE COMMODITIES, TECHNOLOGY OR SOFTWARE WERE EXPORTED FROM THE UNITED STATES IN ACCORDANCE WITH THE EXPORT ADMINISTRATION REGULATIONS. DIVERSION CONTRARY TO U.S. LAW PROHIBITED.