



Reverse Polarity SMA Plug to Reverse Polarity SMA Plug  
Low Loss Cable 48 Inch Length Using TCOM-240 Coax  
with Times Microwave Components

**RF Cable Assemblies Technical Data Sheet**

**PE3C9808-48**

**Configuration**

- Connector 1: SMA Plug Reverse Polarity
- Connector 2: SMA Plug Reverse Polarity
- Coax Flex Type: Flexible

**Features**

- Max Frequency 2.5 GHz
- Double Shielded
- PE Jacket
- 500 Mating Cycles

**Applications**

- General Purpose
- Laboratory Use

**Description**

Pasternack's PE3C9808-48 reverse polarity SMA plug to reverse polarity SMA plug 48 inch cable using TCOM-240 coax is part of our full line of RF components available for same-day shipping. Pasternack's flexible RF cable assemblies are ideal for applications where tight bends and flexure are required. This Pasternack reverse polarity SMA to reverse polarity SMA cable assembly has a plug to plug gender configuration with 50 ohm flexible coax. The PE3C9808-48 reverse polarity SMA plug to reverse polarity SMA plug cable assembly operates to 2.5 GHz. The double shielding of this Pasternack cable assembly provides excellent shielding effectiveness.

Custom versions of most RF cable assemblies can be built and shipped same day. Custom cable assembly lengths can be obtained by specifying the desired length on the web site at time of order or by contacting a sales representative. Other available RF cable assembly value added services include connector orientation or clocking, heat shrink booting and custom labeling. RF testing can also be performed to document the electrical performance of your cable assembly.

**Electrical Specifications**

Description	Minimum	Typical	Maximum	Units
Frequency Range	DC		2.5	GHz
VSWR			1.4:1	

**Specifications by Frequency**

Description	F1	F2	F3	F4	F5	Units
Frequency	0.25	0.5	1	2.5		GHz
Insertion Loss (Typ.)	0.35	0.41	0.5	0.7		dB

**Electrical Specification Notes:**

The Insertion Loss data above is based on the performance specifications of the coax and connectors used in this assembly. The Insertion Loss includes an estimated insertion loss of 0.1 dB per connector.

Click the following link (or enter part number in "SEARCH" on website) to obtain additional part information including price, inventory and certifications: [Reverse Polarity SMA Plug to Reverse Polarity SMA Plug Low Loss Cable 48 Inch Length Using TCOM-240 Coax with Times Microwave Components PE3C9808-48](#)



Reverse Polarity SMA Plug to Reverse Polarity SMA Plug  
 Low Loss Cable 48 Inch Length Using TCOM-240 Coax  
 with Times Microwave Components

## RF Cable Assemblies Technical Data Sheet

**PE3C9808-48**

### Mechanical Specifications

#### Cable Assembly

Length*	48 in [121.92 cm]
Weight	0.32 lbs [145.15 g]

#### Cable

Impedance	50 Ohms
Inner Conductor Type	Solid
Inner Conductor Material and Plating	Copper
Dielectric Type	PE (F)
Number of Shields	2
Shield Layer 1	Silver Plated Copper Braid
Shield Layer 2	Tinned Copper Braid
Jacket Material	PE, Black
Jacket Diameter	0.24 in [6.1 mm]

### Connectors

Description	Connector 1	Connector 2
Type	SMA Plug Reverse Polarity Threaded	SMA Plug Reverse Polarity Threaded
Specification	MIL-STD-345	MIL-STD-345
Impedance	50 Ohms	50 Ohms
Mating Cycles	500	500
Contact Material and Plating	Beryllium Copper, Gold	Beryllium Copper, Gold
Body Material and Plating	Passivated Stainless Steel	Passivated Stainless Steel
Coupling Nut Material and Plating	Passivated Stainless Steel	Passivated Stainless Steel

**Compliance Certifications** (see [product page](#) for current document)

### Plotted and Other Data

Notes:

Click the following link (or enter part number in "SEARCH" on website) to obtain additional part information including price, inventory and certifications: [Reverse Polarity SMA Plug to Reverse Polarity SMA Plug Low Loss Cable 48 Inch Length Using TCOM-240 Coax with Times Microwave Components PE3C9808-48](#)



Reverse Polarity SMA Plug to Reverse Polarity SMA Plug  
Low Loss Cable 48 Inch Length Using TCOM-240 Coax  
with Times Microwave Components

**RF Cable Assemblies Technical Data Sheet**

**PE3C9808-48**

**How to Order**

Part Number Configuration:

**PE3C9808**

- **xx**

**uu**

Unit of Measure:  
cm = Centimeters  
<blank> = Inches  
Length  
Base Number

Example: PE3C9808-12 = 12 inches long cable  
PE3C9808-100cm = 100 cm long cable

Reverse Polarity SMA Plug to Reverse Polarity SMA Plug Low Loss Cable 48 Inch Length Using TCOM-240 Coax with Times Microwave Components from Pasternack Enterprises has same day shipment for domestic and International orders. Our RF, microwave and millimeter wave products maintain a 99.4% availability and are part of the broadest selection in the industry.

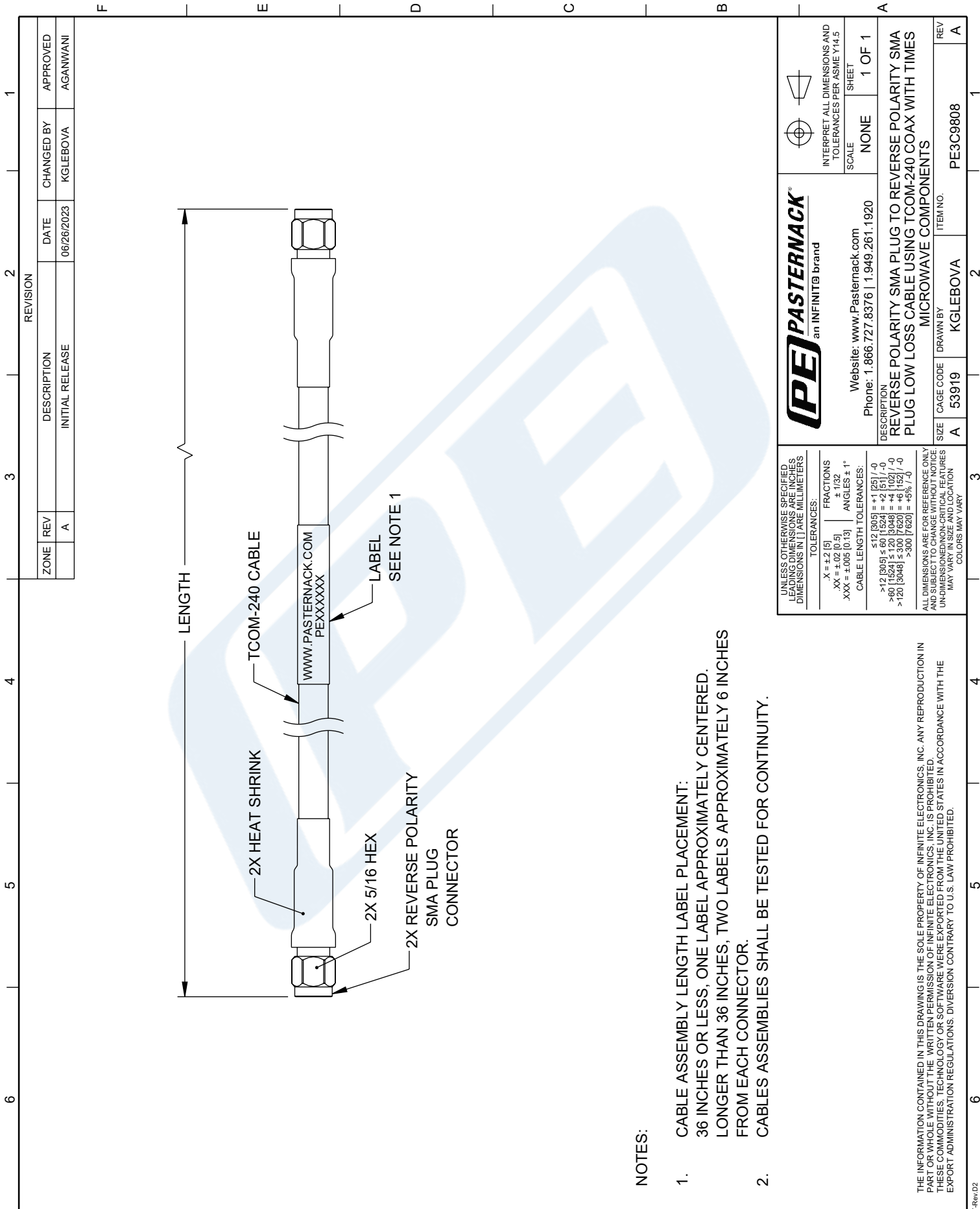
Click the following link (or enter part number in "SEARCH" on website) to obtain additional part information including price, inventory and certifications: [Reverse Polarity SMA Plug to Reverse Polarity SMA Plug Low Loss Cable 48 Inch Length Using TCOM-240 Coax with Times Microwave Components PE3C9808-48](https://www.pasternack.com/reverse-polarity-sma-plug-to-reverse-polarity-sma-plug-low-loss-cable-48-inch-length-using-tcom-240-pe3c9808-48-p.aspx)

URL: <https://www.pasternack.com/reverse-polarity-sma-plug-to-reverse-polarity-sma-plug-low-loss-cable-48-inch-length-using-tcom-240-pe3c9808-48-p.aspx>

The information contained in this document is accurate to the best of our knowledge and representative of the part described herein. It may be necessary to make modifications to the part and/or the documentation of the part, in order to implement improvements. Pasternack reserves the right to make such changes as required. Unless otherwise stated, all specifications are nominal. Pasternack does not make any representation or warranty regarding the suitability of the part described herein for any particular purpose, and Pasternack does not assume any liability arising out of the use of any part or documentation.

# PE3C9808-48 CAD Drawing

Reverse Polarity SMA Plug to Reverse Polarity SMA Plug Low Loss Cable  
48 Inch Length Using TCOM-240 Coax with Times Microwave Components



**NOTES:**

1. CABLE ASSEMBLY LENGTH LABEL PLACEMENT:  
36 INCHES OR LESS, ONE LABEL APPROXIMATELY CENTERED.  
LONGER THAN 36 INCHES, TWO LABELS APPROXIMATELY 6 INCHES FROM EACH CONNECTOR.
2. CABLES ASSEMBLIES SHALL BE TESTED FOR CONTINUITY.

UNLESS OTHERWISE SPECIFIED LEADING DIMENSIONS ARE IN INCHES DIMENSIONS IN [ ] ARE MILLIMETERS		 INTERPRET ALL DIMENSIONS AND TOLERANCES PER ASME Y14.5	
TOLERANCES:	FRACTIONS	SCALE	SHEET
.X = ±.2 [9]	± 1/32	NONE	1 OF 1
.XX = ±.02 [0.5]	ANGLES ± 1°		
.XXX = ±.005 [0.13]			
CABLE LENGTH TOLERANCES:		Website: <a href="http://www.Pasternack.com">www.Pasternack.com</a>	
≤12 [305]	±.1 [25]	Phone: 1.866.727.8376   1.949.261.1920	
>12 [305] ≤ 60 [1524]	±.2 [51]	DESCRIPTION	
>60 [1524] ≤ 120 [3048]	±.4 [102]	REVERSE POLARITY SMA PLUG TO REVERSE POLARITY SMA	
>120 [3048] ≤ 300 [7620]	±.6 [152]	PLUG LOW LOSS CABLE USING TCOM-240 COAX WITH TIMES	
>300 [7620]	±.9 [7.62]	MICROWAVE COMPONENTS	
ALL DIMENSIONS ARE FOR REFERENCE ONLY AND SUBJECT TO CHANGE WITHOUT NOTICE. UNDIMENSIONED NON-CRITICAL FEATURES MAY VARY IN SIZE AND LOCATION. COLORS MAY VARY.		REV	
SIZE		CAGE CODE	ITEM NO.
A	53919	DRAWN BY	PE3C9808
A		KGLEBOVA	A
3		2	1