



QD QMA Male to QD QMA Male Low Loss Cable 48 Inch Length Using TCOM-240 Coax with Times Microwave Components

RF Cable Assemblies Technical Data Sheet

PE3C9825-48

Configuration

- Connector 1: QDQMA Male
- Connector 2: QDQMA Male
- Cable Type: TCOM-240
- Coax Flex Type: Flexible

Features

- Max Frequency 8 GHz
- Double Shielded
- PE Jacket
- 500 Mating Cycles

Applications

- General Purpose
- Laboratory Use

Description

Pasternack's PE3C9825-48 QMA male QD to QMA male QD 48 inch cable using TCOM-240 coax is part of our full line of RF components available for same-day shipping. Pasternack's flexible RF cable assemblies are ideal for applications where tight bends and flexure are required. This Pasternack QMA to QMA cable assembly has a male to male gender configuration with 50 ohm flexible TCOM-240 coax. The PE3C9825-48 QMA male to QMA male cable assembly operates to 8 GHz. The double shielding of this Pasternack cable assembly provides excellent shielding effectiveness.

Custom versions of most RF cable assemblies can be built and shipped same day. Custom cable assembly lengths can be obtained by specifying the desired length on the web site at time of order or by contacting a sales representative. Other available RF cable assembly value added services include connector orientation or clocking, heat shrink booting and custom labeling. RF testing can also be performed to document the electrical performance of your cable assembly.

Electrical Specifications

Description	Minimum	Typical	Maximum	Units
Frequency Range	DC		8	GHz
VSWR			1.4:1	

Specifications by Frequency

Description	F1	F2	F3	F4	F5	Units
Frequency	0.5	1	2	4	8	GHz
Insertion Loss (Typ.)	0.77	0.86	1	1.18	1.48	dB

Electrical Specification Notes:

The Insertion Loss data above is based on the performance specifications of the coax and connectors used in this assembly. The Insertion Loss includes an estimated insertion loss of 0.28 dB per connector.

Click the following link (or enter part number in "SEARCH" on website) to obtain additional part information including price, inventory and certifications: [QD QMA Male to QD QMA Male Low Loss Cable 48 Inch Length Using TCOM-240 Coax with Times Microwave Components PE3C9825-48](#)



QD QMA Male to QD QMA Male Low Loss Cable 48 Inch Length
Using TCOM-240 Coax with Times Microwave Components

RF Cable Assemblies Technical Data Sheet

PE3C9825-48

Mechanical Specifications

Cable Assembly

Length*	48 in [121.92 cm]
Weight	0.32 lbs [145.15 g]

Cable

Cable Type	TCOM-240
Impedance	50 Ohms
Inner Conductor Type	Solid
Inner Conductor Material and Plating	Copper
Dielectric Type	PE (F)
Number of Shields	2
Shield Layer 1	Silver Plated Copper Braid
Shield Layer 2	Tinned Copper Braid
Jacket Material	PE, Black
Jacket Diameter	0.24 in [6.1 mm]

Connectors

Description	Connector 1	Connector 2
Type	QMA Male Push-On	QMA Male Push-On
Impedance	50 Ohms	50 Ohms
Connection Method	QD	QD
Mating Cycles	500	500
Contact Material and Plating	Beryllium Copper, Gold	Beryllium Copper, Gold
Contact Plating Specification	50 µin minimum	50 µin minimum
Dielectric Type	PTFE	PTFE
Body Material and Plating	Brass, Tri-Metal	Brass, Tri-Metal
Body Plating Specification	80 µin minimum	80 µin minimum
Coupling Nut Material and Plating	Brass, Tri-Metal	Brass, Tri-Metal
Coupling Nut Plating Specification	80 µin minimum	80 µin minimum

Compliance Certifications (see [product page](#) for current document)

Plotted and Other Data

Notes:

Click the following link (or enter part number in "SEARCH" on website) to obtain additional part information including price, inventory and certifications: [QD QMA Male to QD QMA Male Low Loss Cable 48 Inch Length Using TCOM-240 Coax with Times Microwave Components PE3C9825-48](#)



QD QMA Male to QD QMA Male Low Loss Cable 48 Inch Length
Using TCOM-240 Coax with Times Microwave Components

RF Cable Assemblies Technical Data Sheet

PE3C9825-48

How to Order

Part Number Configuration:

PE3C9825

- **xx**

uu

Unit of Measure:
cm = Centimeters
<blank> = Inches
Length
Base Number

Example: PE3C9825-12 = 12 inches long cable
PE3C9825-100cm = 100 cm long cable

QD QMA Male to QD QMA Male Low Loss Cable 48 Inch Length Using TCOM-240 Coax with Times Microwave Components from Pasternack Enterprises has same day shipment for domestic and International orders. Our RF, microwave and millimeter wave products maintain a 99.4% availability and are part of the broadest selection in the industry.

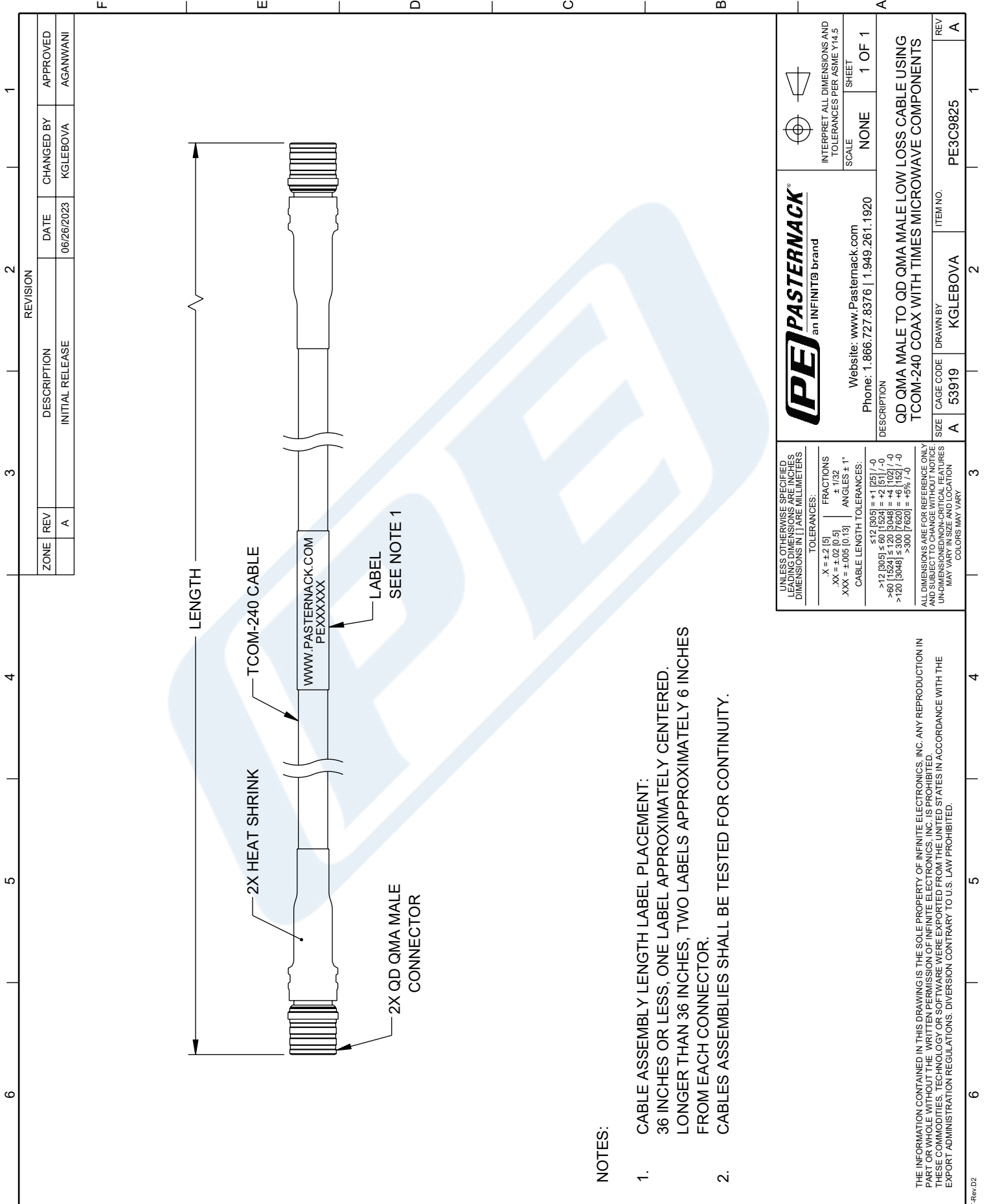
Click the following link (or enter part number in "SEARCH" on website) to obtain additional part information including price, inventory and certifications: [QD QMA Male to QD QMA Male Low Loss Cable 48 Inch Length Using TCOM-240 Coax with Times Microwave Components PE3C9825-48](https://www.pasternack.com/qd-qma-male-to-qd-qma-male-low-loss-cable-48-inch-length-using-tcom-240-pe3c9825-48-p.aspx)

URL: <https://www.pasternack.com/qd-qma-male-to-qd-qma-male-low-loss-cable-48-inch-length-using-tcom-240-pe3c9825-48-p.aspx>

The information contained in this document is accurate to the best of our knowledge and representative of the part described herein. It may be necessary to make modifications to the part and/or the documentation of the part, in order to implement improvements. Pasternack reserves the right to make such changes as required. Unless otherwise stated, all specifications are nominal. Pasternack does not make any representation or warranty regarding the suitability of the part described herein for any particular purpose, and Pasternack does not assume any liability arising out of the use of any part or documentation.

PE3C9825-48 CAD Drawing

QD QMA Male to QD QMA Male Low Loss Cable 48 Inch Length
Using TCOM-240 Coax with Times Microwave Components



NOTES:

1. CABLE ASSEMBLY LENGTH LABEL PLACEMENT:
36 INCHES OR LESS, ONE LABEL APPROXIMATELY CENTERED.
LONGER THAN 36 INCHES, TWO LABELS APPROXIMATELY 6 INCHES
FROM EACH CONNECTOR.
2. CABLES ASSEMBLIES SHALL BE TESTED FOR CONTINUITY.

REVISION					
ZONE	REV	DESCRIPTION	DATE	CHANGED BY	APPROVED
	A	INITIAL RELEASE	06/26/2023	KGLEBOVA	AGANWANI

<p>PASTERNAK an INFINITI® brand</p> <p>Website: www.Pasternack.com Phone: 1.866.727.8376 1.949.261.1920</p>	<p>INTERPRET ALL DIMENSIONS AND TOLERANCES PER ASME Y14.5</p>
	<p>SCALE: NONE</p> <p>SHEET: 1 OF 1</p>
<p>DESCRIPTION: QD QMA MALE TO QD QMA MALE LOW LOSS CABLE USING TCOM-240 COAX WITH TIMES MICROWAVE COMPONENTS</p>	
<p>SIZE: A</p> <p>CAGE CODE: 53919</p> <p>DRAWN BY: KGLEBOVA</p> <p>ITEM NO.: PE3C9825</p>	<p>REV: A</p>

UNLESS OTHERWISE SPECIFIED LEADING DIMENSIONS ARE IN INCHES DIMENSIONS IN [] ARE MILLIMETERS

TOLERANCES:

.X = ±.2 [9]	FRACTIONS ± 1/32
.XX = ±.02 [0.5]	ANGLES ± 1°
.XXX = ±.005 [0.13]	

CABLE LENGTH TOLERANCES:

≤ 12 [305]	± .125 [1/-0]
> 12 [305] ≤ 60 [1524]	± .25 [1/-0]
> 60 [1524] ≤ 120 [3048]	± .5 [1/-0]
> 120 [3048] ≤ 300 [7620]	± 1.0 [1.5/-0]
> 300 [7620]	± 2.0 [3.0/-0]

ALL DIMENSIONS ARE FOR REFERENCE ONLY AND SUBJECT TO CHANGE WITHOUT NOTICE. UNDIMENSIONED NON-CRITICAL FEATURES MAY VARY IN SIZE AND LOCATION. COLORS MAY VARY.

THE INFORMATION CONTAINED IN THIS DRAWING IS THE SOLE PROPERTY OF INFINITE ELECTRONICS, INC. ANY REPRODUCTION IN PART OR WHOLE WITHOUT THE WRITTEN PERMISSION OF INFINITE ELECTRONICS, INC. IS PROHIBITED. THESE COMMODITIES, TECHNOLOGY OR SOFTWARE WERE EXPORTED FROM THE UNITED STATES IN ACCORDANCE WITH THE EXPORT ADMINISTRATION REGULATIONS. DIVERSION CONTRARY TO U.S. LAW PROHIBITED.