



N Male Right Angle to SMA Male Low Loss Cable 48 Inch Length Using TCOM-240 Coax with Times Microwave Components

RF Cable Assemblies Technical Data Sheet

PE3C9829-48

Configuration

- Connector 1: N Male Right Angle
- Connector 2: SMA Male
- Cable Type: TCOM-240
- Coax Flex Type: Flexible

Features

- Max Frequency 6 GHz
- Double Shielded
- PE Jacket
- 500 Mating Cycles

Applications

- General Purpose
- Laboratory Use

Description

Pasternack's PE3C9829-48 type N male right angle to SMA male 48 inch cable using TCOM-240 coax is part of our full line of RF components available for same-day shipping. Pasternack's flexible RF cable assemblies are ideal for applications where tight bends and flexure are required. This Pasternack type N to SMA cable assembly has a male to male gender configuration with 50 ohm flexible TCOM-240 coax. The PE3C9829-48 type N male to SMA male cable assembly operates to 6 GHz. The right angle type N interface on the TCOM-240 cable allows for easier connections in tight spaces. The double shielding of this Pasternack cable assembly provides excellent shielding effectiveness.

Custom versions of most RF cable assemblies can be built and shipped same day. Custom cable assembly lengths can be obtained by specifying the desired length on the web site at time of order or by contacting a sales representative. Other available RF cable assembly value added services include connector orientation or clocking, heat shrink booting and custom labeling. RF testing can also be performed to document the electrical performance of your cable assembly.

Electrical Specifications

Description	Minimum	Typical	Maximum	Units
Frequency Range	DC		6	GHz
VSWR			1.4:1	

Specifications by Frequency

Description	F1	F2	F3	F4	F5	Units
Frequency	0.25	0.5	1	2.5	6	GHz
Insertion Loss (Typ.)	0.45	0.53	0.65	1.03	1.29	dB

Electrical Specification Notes:

Click the following link (or enter part number in "SEARCH" on website) to obtain additional part information including price, inventory and certifications: [N Male Right Angle to SMA Male Low Loss Cable 48 Inch Length Using TCOM-240 Coax with Times Microwave Components PE3C9829-48](#)



N Male Right Angle to SMA Male Low Loss Cable 48 Inch Length Using TCOM-240 Coax with Times Microwave Components

RF Cable Assemblies Technical Data Sheet

PE3C9829-48

The Insertion Loss data above is based on the performance specifications of the coax and connectors used in this assembly. The Insertion Loss includes an estimated insertion loss of 0.25 dB for the SMA male connector and 0.1*SQRT(FGHz) dB for the N male right angle connector.

Mechanical Specifications

Cable Assembly

Length*	48 in [121.92 cm]
Weight	0.24 lbs [108.86 g]

Cable

Cable Type	TCOM-240
Impedance	50 Ohms
Inner Conductor Type	Solid
Inner Conductor Material and Plating	Copper
Dielectric Type	PE (F)
Number of Shields	2
Shield Layer 1	Silver Plated Copper Braid
Shield Layer 2	Tinned Copper Braid
Jacket Material	PE, Black
Jacket Diameter	0.24 in [6.1 mm]

Connectors

Description	Connector 1	Connector 2
Type	N Male Right Angle Threaded	SMA Male Threaded
Specification		MIL-STD-348
Impedance	50 Ohms	50 Ohms
Mating Cycles	500	500
Contact Material and Plating	Beryllium Bronze, Gold	Beryllium Copper, Gold
Contact Plating Specification	50 µin minimum	ASTM B488
Dielectric Type	PTFE	PTFE
Outer Conductor Material and Plating		Brass, Tri-Metal
Body Material and Plating	Brass, Tri-Metal	Brass, Tri-Metal
Body Plating Specification	80 µin minimum	
Coupling Nut Material and Plating	Brass, Tri-Metal	Brass, Tri-Metal
Coupling Nut Plating Specification	80 µin minimum	

Click the following link (or enter part number in "SEARCH" on website) to obtain additional part information including price, inventory and certifications: [N Male Right Angle to SMA Male Low Loss Cable 48 Inch Length Using TCOM-240 Coax with Times Microwave Components PE3C9829-48](#)



N Male Right Angle to SMA Male Low Loss Cable 48 Inch Length
Using TCOM-240 Coax with Times Microwave Components

RF Cable Assemblies Technical Data Sheet

PE3C9829-48

Compliance Certifications (see [product page](#) for current document)

Plotted and Other Data

Notes:

How to Order

Part Number Configuration:

PE3C9829 - xx uu

Unit of Measure:
cm = Centimeters
<blank> = Inches
Length
Base Number

Example: PE3C9829-12 = 12 inches long cable
PE3C9829-100cm = 100 cm long cable

N Male Right Angle to SMA Male Low Loss Cable 48 Inch Length Using TCOM-240 Coax with Times Microwave Components from Pasternack Enterprises has same day shipment for domestic and International orders. Our RF, microwave and millimeter wave products maintain a 99.4% availability and are part of the broadest selection in the industry.

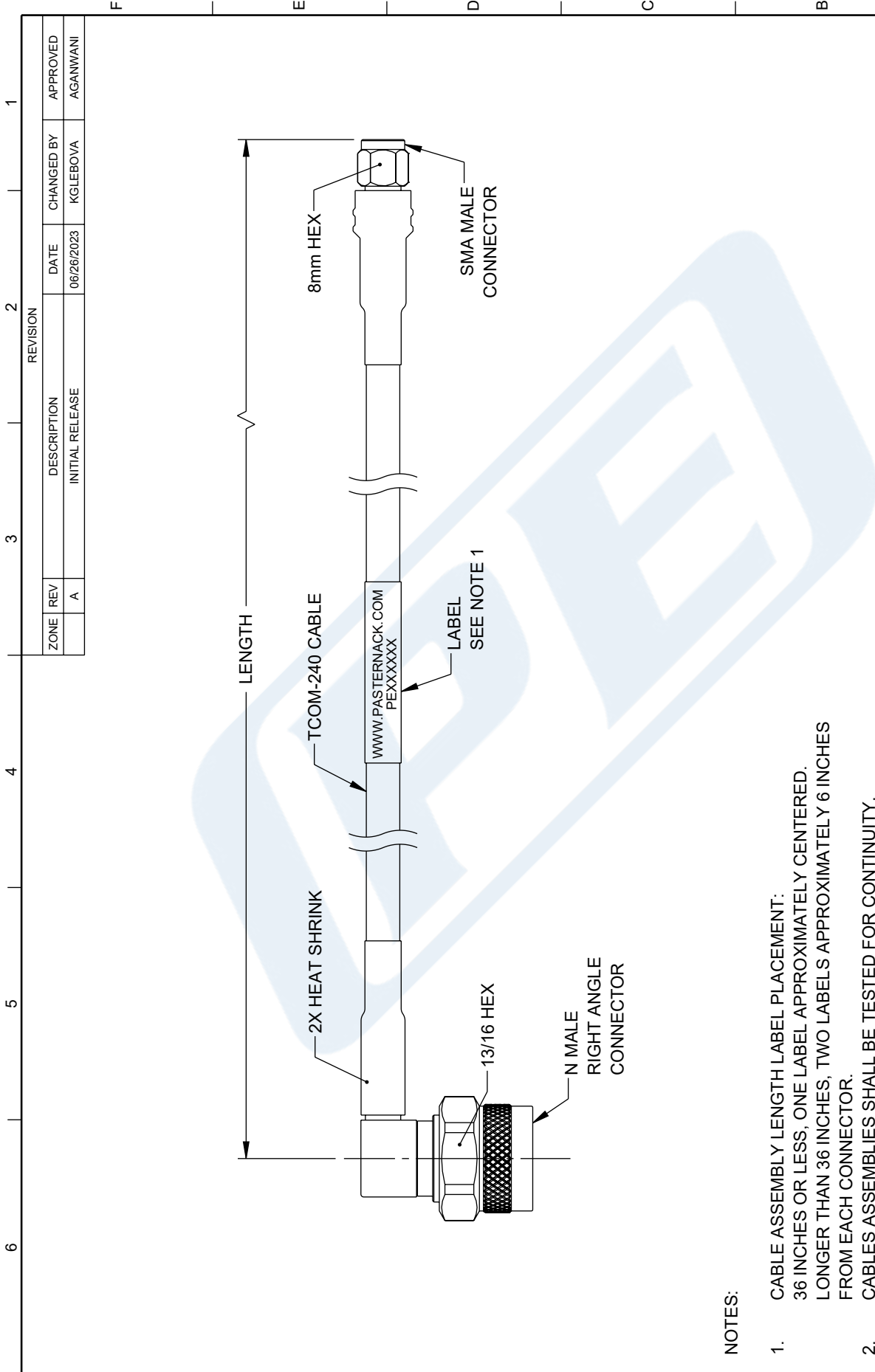
Click the following link (or enter part number in "SEARCH" on website) to obtain additional part information including price, inventory and certifications: [N Male Right Angle to SMA Male Low Loss Cable 48 Inch Length Using TCOM-240 Coax with Times Microwave Components PE3C9829-48](#)

URL: <https://www.pasternack.com/n-male-right-angle-to-sma-male-low-loss-cable-48-inch-length-using-tcom-240-pe3c9829-48-p.aspx>

The information contained in this document is accurate to the best of our knowledge and representative of the part described herein. It may be necessary to make modifications to the part and/or the documentation of the part, in order to implement improvements. Pasternack reserves the right to make such changes as required. Unless otherwise stated, all specifications are nominal. Pasternack does not make any representation or warranty regarding the suitability of the part described herein for any particular purpose, and Pasternack does not assume any liability arising out of the use of any part or documentation.

PE3C9829-48 CAD Drawing

N Male Right Angle to SMA Male Low Loss Cable 48 Inch Length
Using TCOM-240 Coax with Times Microwave Components



NOTES:

1. CABLE ASSEMBLY LENGTH LABEL PLACEMENT:
36 INCHES OR LESS, ONE LABEL APPROXIMATELY CENTERED.
LONGER THAN 36 INCHES, TWO LABELS APPROXIMATELY 6 INCHES
FROM EACH CONNECTOR.
2. CABLES ASSEMBLIES SHALL BE TESTED FOR CONTINUITY.

UNLESS OTHERWISE SPECIFIED LEADING DIMENSIONS ARE IN INCHES DIMENSIONS IN [] ARE MILLIMETERS	
TOLERANCES:	
.X = ±.2 [9]	FRACTIONS ± 1/32
.XX = ±.02 [0.5]	ANGLES ± 1°
.XXX = ±.005 [0.13]	
CABLE LENGTH TOLERANCES:	
≤12 [305]	±.1 [25] / -0
>12 [305] ≤ 60 [1524]	±.2 [51] / -0
>60 [1524] ≤ 120 [3048]	±.4 [102] / -0
>120 [3048] ≤ 300 [7620]	±.6 [152] / -0
>300 [7620]	±.9% / -0
ALL DIMENSIONS ARE FOR REFERENCE ONLY AND SUBJECT TO CHANGE WITHOUT NOTICE. UNLESS OTHERWISE SPECIFIED, ALL DIMENSIONS MAY VARY IN SIZE AND LOCATION COLORS MAY VARY	

 an INFINITI® brand		INTERPRET ALL DIMENSIONS AND TOLERANCES PER ASME Y14.5 SCALE NONE SHEET 1 OF 1
Website: www.Pasterneck.com Phone: 1.866.727.8376 1.949.261.1920		
DESCRIPTION		
N MALE RIGHT ANGLE TO SMA MALE LOW LOSS CABLE USING TCOM-240 COAX WITH TIMES MICROWAVE COMPONENTS		
SIZE	CAGE CODE	ITEM NO.
A	53919	PE3C9829
REV	DRAWN BY	REV
A	KGLEBOVA	A