

SMPS Female to 2.92mm Female Cable 12 Inch Length Using PE-P047HF Coax

PE3C9955-12

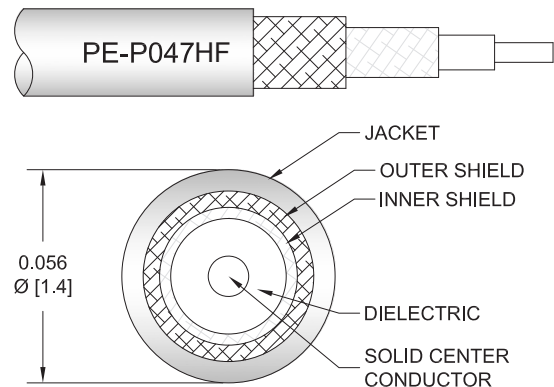


Configuration

- Connector 1: SMPS Female
- Connector 2: 2.92mm Female
- Cable Type: PE-P047HF
- Coax Flex Type: Flexible

Features

- Max Frequency 40 GHz
- Shielding Effectivity > 90 dB
- 70% Phase Velocity
- Double Shielded
- FEP Jacket



Applications

- General Purpose
- Laboratory Use
- Scientific research
- High-reliability, high-density for aerospace & defense application
- Ground base station & communication systems, avionics, radar systems

Description

Pasternack's PE3C9955-12 SMPS female to 2.92mm female 12 inch cable using PE-P047HF coax is part of our full line of RF components available for same-day shipping. Pasternack's flexible RF cable assemblies are ideal for applications where tight bends and flexure are required. This Pasternack SMPS to 2.92mm cable assembly has a female to female gender configuration with 50 ohm flexible PE-P047HF coax. The PE3C9955-12 SMPS female to 2.92mm female cable assembly operates to 40 GHz. The double shielding of this Pasternack cable assembly provides excellent shielding effectiveness of better than 90 dB.

Custom versions of most RF cable assemblies can be built and shipped same day. Custom cable assembly lengths can be obtained by specifying the desired length on the web site at time of order or by contacting a sales representative. Other available RF cable assembly value added services include connector orientation or clocking, heat shrink booting and custom labeling. RF testing can also be performed to document the electrical performance of your cable assembly.

Electrical Specifications

Description	Minimum	Typical	Maximum	Units
Frequency Range	DC		40	GHz
VSWR			1.5:1	
Velocity of Propagation		70		%
RF Shielding	90			dB
Capacitance		29 [95.14]		pF/ft [pF/m]

Specifications by Frequency

SMPS Female to 2.92mm Female Cable 12 Inch Length Using PE-P047HF Coax



PE3C9955-12

Part Number	Length	Description	F1	F2	F3	F4	F5	Units	Weight (lbs)
		Frequency	2500	5000	10000	20000	40000	MHz	
PE3C9955	Custom Lengths Available	Insertion Loss (Typ.)	0.55	0.8	1.17	1.78	2.77	dB/ft	
			1.81	2.63	3.84	5.84	9.09	dB/m	
PE3C9955-6	6 inch	Insertion Loss (Typ.)	0.54	0.73	1.01	1.44	2.12	dB	0.009
PE3C9955-12	12 inch	Insertion Loss (Typ.)	0.81	1.13	1.59	2.33	3.51	dB	0.011
PE3C9955-18	18 inch	Insertion Loss (Typ.)	1.09	1.53	2.18	3.22	4.89	dB	0.013

The insertion loss data for the base model does not include loss due to the connectors. Each length includes insertion loss due to the connectors.

Loss due to Connector 1: 0.1*SQRT(FGHz) dB
 Loss due to Connector 2: 0.1 dB
 Base Weight: 0.011 pounds
 Additional Weight per Inch: 0.00033 pounds

Mechanical Specifications

Cable Assembly

Length 12 in [304.8 mm]
 Width/Diameter 0.5 in [12.7 mm]
 Weight 0.01711 lbs [7.76 g]

Cable

Cable Type PE-P047HF
 Impedance 50 Ohms
 Inner Conductor Type Solid
 Inner Conductor Material and Plating Copper, Silver
 Dielectric Type PTFE
 Number of Shields 2
 Shield Layer 1 Silver Plated Copper Tape
 Shield Layer 2 Silver Plated Copper Braid
 Jacket Material FEP, Blue
 Jacket Diameter 0.06 in [1.52 mm]
 Repeated Minimum Bend Radius 0.1 in [2.54 mm]

SMPS Female to 2.92mm Female Cable 12 Inch Length Using PE-P047HF Coax



PE3C9955-12

Connectors

Description	Connector 1	Connector 2
Type	SMPS Female	2.92mm Female
Impedance	50 Ohms	50 Ohms
Configuration	Straight	Straight
Contact Material and Plating	Beryllium Copper, Gold	Beryllium Copper, Gold over Nickel
Contact Plating Specification	50 µin minimum gold	50 µin minimum
Dielectric Type	PTFE	PEI
Outer Conductor Material and Plating	Beryllium Copper, Gold	Passivated Stainless Steel
Outer Conductor Plating Specification	50 µin minimum	SAE-AMS-2700
Body Material and Plating	Beryllium Copper, Gold	Passivated Stainless Steel
Body Plating Specification	30 µin minimum	SAE-AMS-2700

Environmental Specifications

Compliance Certifications (see [product page](#) for current document)

Plotted and Other Data

Notes:
Values at 25°C, sea level.

SMPS Female to 2.92mm Female Cable 12 Inch Length Using PE-P047HF Coax



PE3C9955-12

Typical Performance Data

How to Order

Part Number Configuration:

PE3C9955

- xx

uu

Unit of Measure:

cm = Centimeters

<blank> = Inches

Length

Base Number

Example: PE3C9955-12 = 12 inches long cable
PE3C9955-100cm = 100 cm long cable

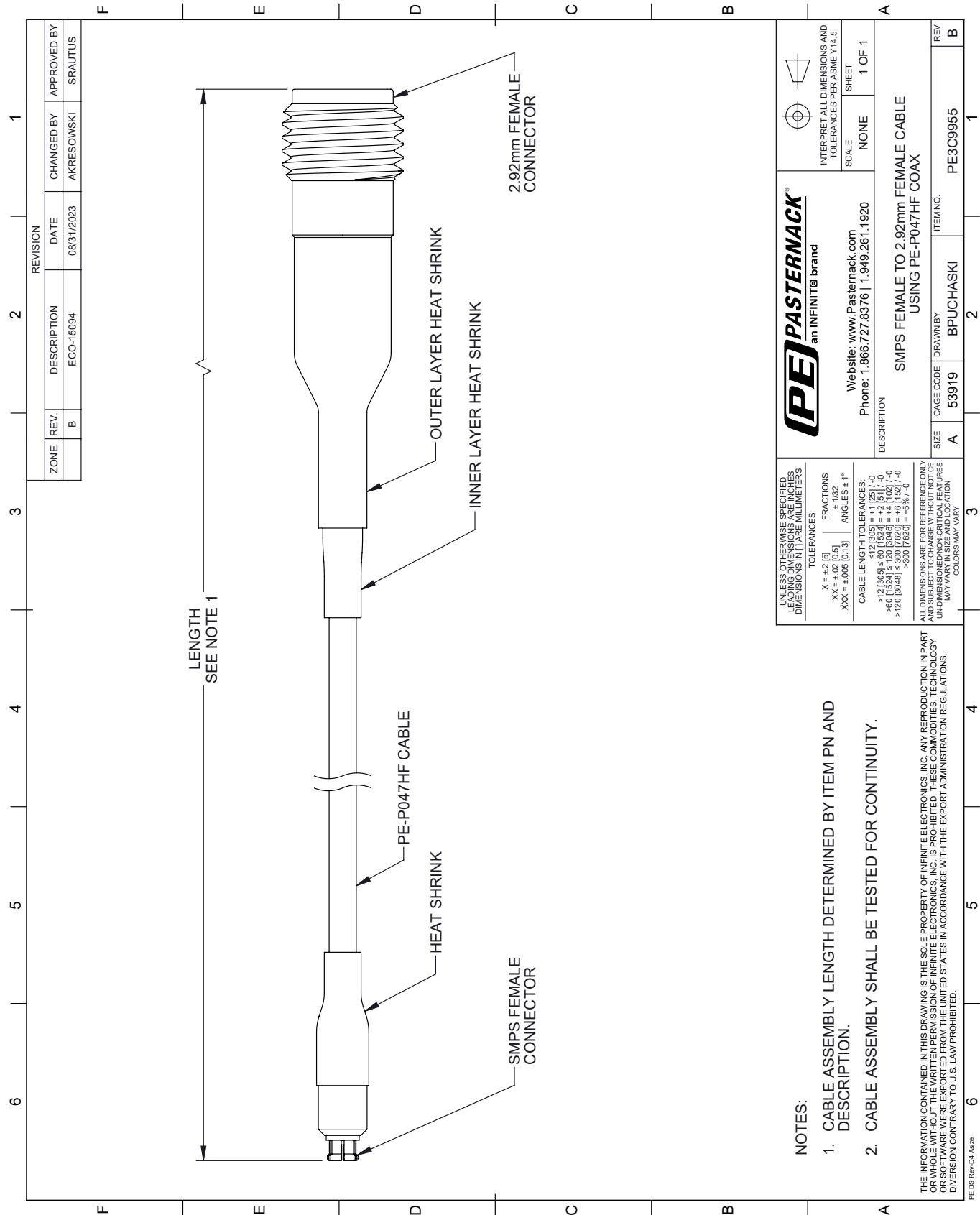
SMPS Female to 2.92mm Female Cable 12 Inch Length Using PE-P047HF Coax from Pasternack Enterprises has same day shipment for domestic and International orders. Our RF, microwave and millimeter wave products maintain a 99.4% availability and are part of the broadest selection in the industry.

Click the following link (or enter part number in "SEARCH" on website) to obtain additional part information including price, inventory and certifications: [SMPS Female to 2.92mm Female Cable 12 Inch Length Using PE-P047HF Coax PE3C9955-12](https://www.pasternack.com/smps-female-to-2.92mm-female-cable-12-inch-length-using-pe-p047hf-pe3c9955-12-p.aspx)

URL: <https://www.pasternack.com/smps-female-to-2.92mm-female-cable-12-inch-length-using-pe-p047hf-pe3c9955-12-p.aspx>

The information contained within this document is accurate to the best of our knowledge and representative of the part described herein. It may be necessary to make modifications to the part and/or the documentation of the part in order to implement improvements. Pasternack Enterprises reserves the right to make such changes as required. Unless otherwise stated, all specifications are nominal. Pasternack Enterprises does not make any representation or warranty regarding the suitability of the part described herein for any particular purpose, and Pasternack Enterprises does not assume liability arising out of the use of any part or document.

PE3C9955-12 CAD Drawing
SMPS Female to 2.92mm Female Cable 12 Inch Length Using PE-P047HF Coax



UNLESS OTHERWISE SPECIFIED, DIMENSIONS ARE IN INCHES. DIMENSIONS IN [] ARE MILLIMETERS.		PE PASTERNAK an INFINITE® brand		INTERPRET ALL DIMENSIONS AND TOLERANCES PER ASME Y14.5	
TOLERANCES:		Website: www.Pasternack.com		SCALE	
X = ±.2 [5]		Phone: 1.866.727.8376 1.949.261.1920		NONE	
XX = ±.02 [0.5]				SHEET	
XXX = ±.005 [0.13]				1 OF 1	
FRACTIONS ± 1/32					
ANGLES ± 1°					
CABLE LENGTH TOLERANCES:		DESCRIPTION			
>12 [305] ≤ 60 [1524] = ±.1 [25] / -0		SMPS FEMALE TO 2.92mm FEMALE CABLE			
>60 [1524] ≤ 120 [3048] = ±.1 [25] / -0		USING PE-P047HF COAX			
>120 [3048] ≤ 300 [7620] = ±.1 [25] / -0					
>300 [7620] = ±.1 [25] / -0					
ALL DIMENSIONS ARE FOR REFERENCE ONLY. DIMENSIONS SHALL BE DETERMINED BY ITEM PN AND DESCRIPTION.		SIZE		REV	
UNLESS OTHERWISE SPECIFIED, DIMENSIONS ARE IN INCHES. DIMENSIONS IN [] ARE MILLIMETERS.		A		B	
CABLE LENGTH TOLERANCES:		CAGE CODE		ITEM NO.	
>12 [305] ≤ 60 [1524] = ±.1 [25] / -0		53919		PE3C9955	
>60 [1524] ≤ 120 [3048] = ±.1 [25] / -0		DRAWN BY			
>120 [3048] ≤ 300 [7620] = ±.1 [25] / -0		BPUCHASKI			
>300 [7620] = ±.1 [25] / -0					
ALL DIMENSIONS ARE FOR REFERENCE ONLY. DIMENSIONS SHALL BE DETERMINED BY ITEM PN AND DESCRIPTION.					
UNLESS OTHERWISE SPECIFIED, DIMENSIONS ARE IN INCHES. DIMENSIONS IN [] ARE MILLIMETERS.					
CABLE LENGTH TOLERANCES:					
>12 [305] ≤ 60 [1524] = ±.1 [25] / -0					
>60 [1524] ≤ 120 [3048] = ±.1 [25] / -0					
>120 [3048] ≤ 300 [7620] = ±.1 [25] / -0					
>300 [7620] = ±.1 [25] / -0					
ALL DIMENSIONS ARE FOR REFERENCE ONLY. DIMENSIONS SHALL BE DETERMINED BY ITEM PN AND DESCRIPTION.					
UNLESS OTHERWISE SPECIFIED, DIMENSIONS ARE IN INCHES. DIMENSIONS IN [] ARE MILLIMETERS.					
CABLE LENGTH TOLERANCES:					
>12 [305] ≤ 60 [1524] = ±.1 [25] / -0					
>60 [1524] ≤ 120 [3048] = ±.1 [25] / -0					
>120 [3048] ≤ 300 [7620] = ±.1 [25] / -0					
>300 [7620] = ±.1 [25] / -0					
ALL DIMENSIONS ARE FOR REFERENCE ONLY. DIMENSIONS SHALL BE DETERMINED BY ITEM PN AND DESCRIPTION.					

NOTES:

1. CABLE ASSEMBLY LENGTH DETERMINED BY ITEM PN AND DESCRIPTION.
2. CABLE ASSEMBLY SHALL BE TESTED FOR CONTINUITY.

THE INFORMATION CONTAINED IN THIS DRAWING IS THE SOLE PROPERTY OF INFINITE ELECTRONICS, INC. ANY REPRODUCTION IN PART OR WHOLE WITHOUT THE WRITTEN PERMISSION OF INFINITE ELECTRONICS, INC. IS PROHIBITED. THESE COMMODITIES, TECHNOLOGY OR SOFTWARE WERE EXPORTED FROM THE UNITED STATES IN ACCORDANCE WITH THE EXPORT ADMINISTRATION REGULATIONS. DIVISION CONTRARY TO U.S. LAW PROHIBITED.

PE DS Rev-D4 Addis