

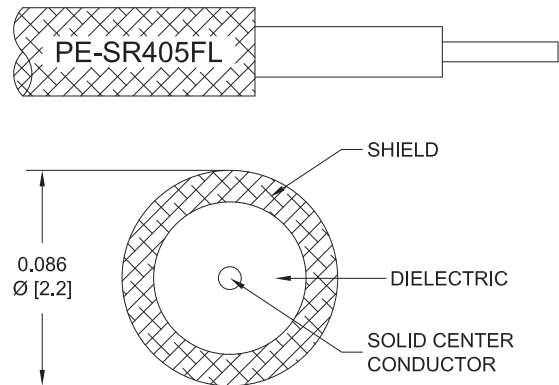
SMPM Size 12 D38999 Contact Pin to SMA Female Cable Using PE-SR405FL Coax with HeatShrink, LF Solder



PE3M0332

Configuration

- Connector 1: Push-on Mini SMP Pin
- Connector 2: SMA Female
- Cable Type: PE-SR405FL
- Coax Flex Type: Formable



Features

- Max Frequency: 18 GHz
- Can be installed in all D38999 size 12 inserts
- Lot traceability
- High speed RF cable assembly

Applications

- Military and Aerospace
- Avionics
- Industrial Automation

Description

The PE3M0332 from Pasternack is a D38999 contact cable assembly that is built with a size 12 mini SMP pin contact on one end and a SMA female connector on the other. Pasternack MIL-DTL-38999 (also known as D38999 or 38999) coaxial cable assembly products are used in applications requiring high quality such as laboratory RF test and measurement, rugged and designed for defense/military, production environments, general use, etc. This mini SMP to SMA cable assembly is a part of one of the largest selections of same-day ship coaxial cables for RF, microwave, and millimeter wave interconnect solutions. This high frequency D38999 cable assembly operates at a maximum frequency of 18 GHz.

This PE3M0332 radio frequency cable assembly can withstand temperatures ranging from -65 to 125 degrees C. Our Mini SMP pin to SMA female cable has a maximum VSWR of 1.4:1. This RF cable assembly with a 0.5-inch diameter has copper clad steel as the cable's inner conducting material and PTFE dielectric type.

This mini SMP pin to SMA female cable assembly is built with PE-SR405FL, which is a formable coax type. The Pasternack PE3M0332 formable cable assembly has a 50 Ohm impedance and is single shielded. Additional dimensions, specifications, and CAD drawings for this mini SMP to SMA RF cable are available on our downloadable PDF datasheet.

Mini SMP pin to SMA female cable assembly is just one of more than one million in-stock RF products available. Pasternack is where to buy high quality custom RF cable assembly products for rugged and MIL-STD designed military/defense, aerospace, outdoor and harsh environment, microwave and millimeter wave radio transmitter receiver, component inter-connection and more for RF test & measurement labs, telecom, phase stable, phase and delay matching, and other radio frequency applications can be manufactured. Variations of mini SMP and SMA cable assemblies can also be built and will ship on the same day as well, search this website or contact us for assistance. For further information on similar products, our expert technical support and trained sales team can get you the ideal mini SMP to SMA RF cable assembly as per your requirements.

SMPM Size 12 D38999 Contact Pin to SMA Female Cable
Using PE-SR405FL Coax with HeatShrink, LF Solder



PE3M0332

Referenced Specifications

IPC J-STD-001	Requirements for Soldered Electrical and Electronic Assemblies
IPC J-STD-006	Requirements for Electronic Grade Solder Alloys and Fluxed and Non-Fluxed Solid Solders for Electronic Soldering Applications
IPC/WHMA-A-620	Requirements and Acceptance for Cable and Wire Harness Assemblies
MIL-DTL-17	Cables, Radio Frequency, Flexible and Semirigid, General Specification for
MIL-PRF-39012	Connectors, Coaxial, Radio Frequency, General Specification for
MIL-STD-348	Radio Frequency Connector Interfaces for MIL-DTL-3643, MIL-DTL-3650, MIL-DTL-3655, MIL-DTL-25516, MIL-PRF-31031, MIL-PRF-39012, MIL-PRF-49142, MIL-PRF-55339, MIL-DTL-83517
SAE AS22520	Crimping Tools, Wire Termination, General Specification For
SAE AS23053	Insulation Sleeving, Electrical, Heat Shrinkable, General Specifications For
SAE AS5942	Marking of Electrical Insulating Materials
IPC J-STD-001	Requirements for Soldered Electrical and Electronic Assemblies

Material Specifications

Component	Specification
Cable	PE-SR405FL in accordance with PE-SR405FL datasheet
Connector 1	in accordance with MIL-DTL-38999
Connector 2	in accordance with MIL-STD-348
Heat Shrink 1	M23053/5-105-0 in accordance with SAE AS23053
Heat Shrink 2	M23053/5-105-0 in accordance with SAE AS23053
Solder	SAC305 in accordance with J-STD-006

Electrical Specifications

Description	Minimum	Typical	Maximum	Units
Frequency Range	DC		18	GHz
VSWR			1.4:1	
Velocity of Propagation		69.5		%
Capacitance		29 [95.14]		pF/ft [pF/m]
DC Resistance Inner Conductor		65.7 [215.55]		Ω /1000ft [Ω /Km]
DC Resistance Outer Conductor		10.2 [33.46]		[Ω /Km]

Specifications by Frequency

SMPM Size 12 D38999 Contact Pin to SMA Female Cable
Using PE-SR405FL Coax with HeatShrink, LF Solder



PE3M0332

Part Number	Length	Description	F1	F2	F3	F4	F5	Units	Weight (lbs)
			Frequency					MHz	
PE3M0332	Custom Lengths Available	Insertion Loss (Typ.)	0.23	0.31	0.51	0.76	1.122	dB/ft	
			0.74	1.01	1.67	2.5	3.69	dB/m	
PE3M0332-6	6 inch	Insertion Loss (Typ.)	0.32	0.36	0.46	0.58	0.77	dB	0.0255
PE3M0332-12	12 inch	Insertion Loss (Typ.)	0.43	0.51	0.71	0.96	1.33	dB	0.031
PE3M0332-24	24 inch	Insertion Loss (Typ.)	0.65	0.82	1.22	1.72	2.45	dB	0.042
PE3M0332-36	36 inch	Insertion Loss (Typ.)	0.88	1.12	1.73	2.48	3.57	dB	0.053
PE3M0332-48	48 inch	Insertion Loss (Typ.)	1.1	1.43	2.24	3.24	4.69	dB	0.064
PE3M0332-60	60 inch	Insertion Loss (Typ.)	1.33	1.73	2.74	4	5.81	dB	0.075

The insertion loss data for the base model does not include loss due to the connectors. Each length includes insertion loss due to the connectors.

Loss due to Connector 1: 0.1 dB
 Loss due to Connector 2: 0.1 dB
 Base Weight: 0.031 pounds
 Additional Weight per Foot: 0.011 pounds

Electrical Specification Notes:
 Values at 25°C, sea level.

Mechanical Specifications

Cable Assembly

Description	Minimum	Typical	Maximum	Units
Length*			0 [0]	in [mm]
Weight		0.031 [14.06]		lbs [g]
Repeated Minimum Bend Radius	0.78			in

Cable Characteristics

Description	Specification
Cable Type	PE-SR405FL
Impedance	50 Ohms
Inner Conductor Type	Solid
Inner Conductor Material and Plating	Copper Clad Steel, Silver
Dielectric Type	PTFE
Number of Shields	1
Outer Conductor 1 Material and Plating	Copper, Tin

Connector Characteristics

Description	Connector 1	Connector 2
Type	Mini SMP Pin	SMA Female
Specification	MIL-DTL-38999	MIL-STD-348

SMPM Size 12 D38999 Contact Pin to SMA Female Cable
Using PE-SR405FL Coax with HeatShrink, LF Solder



PE3M0332

Connector Characteristics

Description	Connector 1	Connector 2
Impedance	50 Ohms	50 Ohms
Configuration	Straight	Straight
Connection Method	Push-on	
Contact Size	12	
Mating Cycles	1,000	
Contact Material and Plating	Beryllium Copper, Gold	Beryllium Copper, Gold
Contact Plating Specification		MIL-G-45204
Dielectric Type	PTFE	PTFE
Outer Conductor Material and Plating	Beryllium Copper, Gold	Stainless Steel, Gold
Body Material and Plating	Beryllium Copper, Gold	Stainless Steel, Gold
Body Plating Specification		MIL-G-45204

Mechanical Specification Notes:

Environmental Specifications

Description	Specification
Temperature Operating Range	-65 to +125 deg C

Compliance Certifications (see [product page](#) for current document)

Plotted and Other Data

Notes:
Values at 25°C, sea level.

SMPM Size 12 D38999 Contact Pin to SMA Female Cable
Using PE-SR405FL Coax with HeatShrink, LF Solder

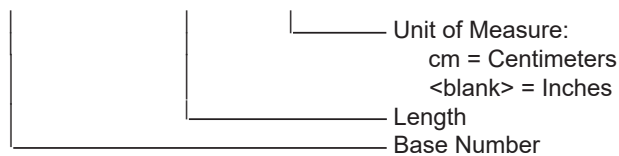


PE3M0332

How to Order

Part Number Configuration:

PE3M0332 - xx uu



Example: PE3M0332-12 = 12 inches long cable
PE3M0332-100cm = 100 cm long cable

Cable Assembly Length Tolerances:

Imperial English		Metric	
"L" ≤ 1 ft	+0.5 in / -0 in	"L" ≤ 0.3 m	+12.5 mm / -0 mm
1 ft < "L" ≤ 5 ft	+1 in / -0 in	0.3 m < "L" ≤ 1.5 m	+25 mm / -0 mm
5 ft < "L" ≤ 10 ft	+2 in / -0 in	1.5 m < "L" ≤ 3 m	+50 mm / -0 mm
10 ft < "L" ≤ 25 ft	+3 in / -0 in	3 m < "L" ≤ 7.5 m	+75 mm / -0 mm
25 ft < "L"	+2%"L" / -0%"L"	7.5 m < "L"	+2%"L" / -0%"L"

* Cable Length = "L"

SMPM Size 12 D38999 Contact Pin to SMA Female Cable Using PE-SR405FL Coax with HeatShrink, LF Solder from Pasternack Enterprises has same day shipment for domestic and International orders. Our RF, microwave and millimeter wave products maintain a 99.4% availability and are part of the broadest selection in the industry.

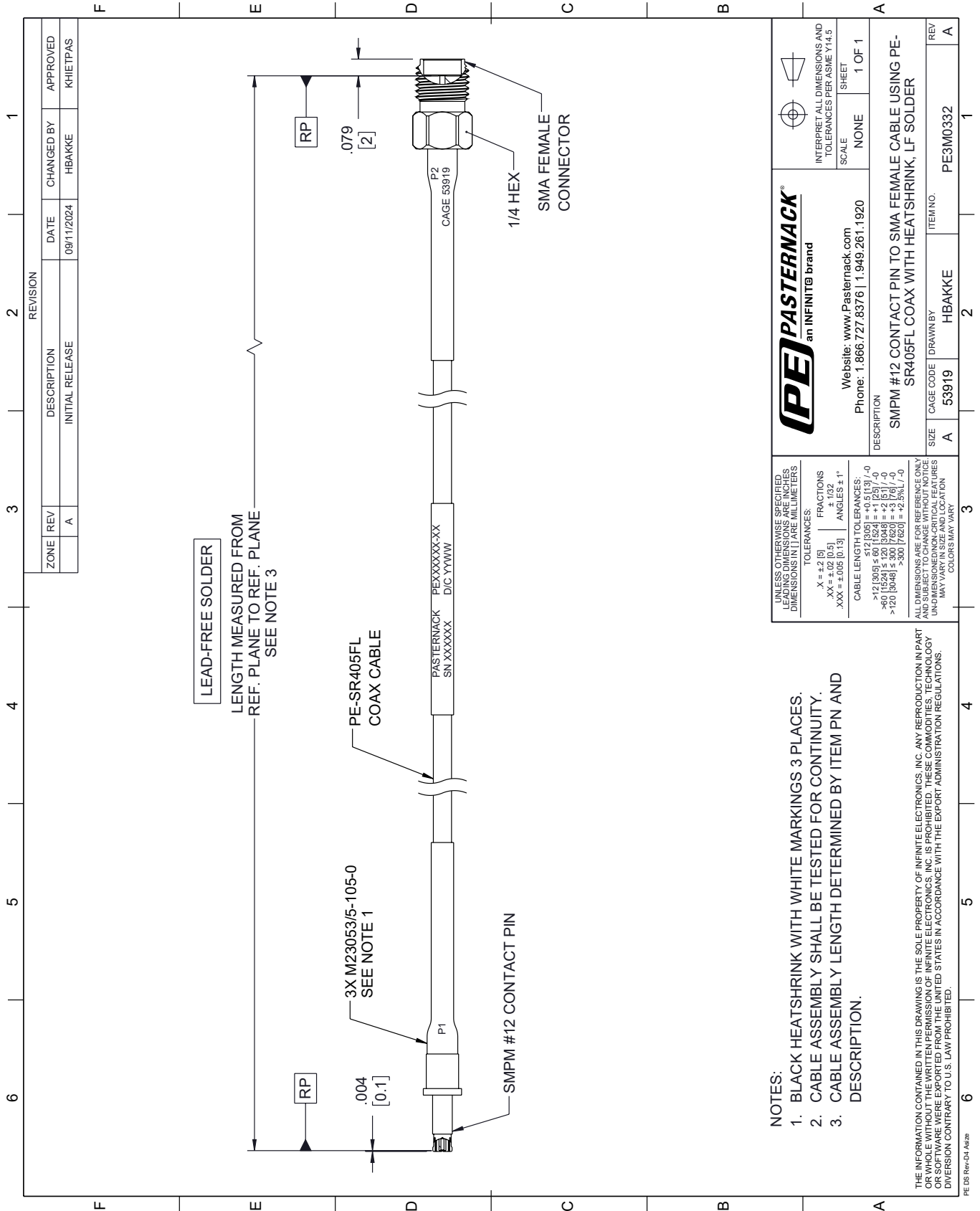
Click the following link (or enter part number in "SEARCH" on website) to obtain additional part information including price, inventory and certifications: [SMPM Size 12 D38999 Contact Pin to SMA Female Cable Using PE-SR405FL Coax with HeatShrink, LF Solder PE3M0332](https://www.pasternack.com/smpm-size-12-d38999-contact-pin-to-sma-female-cable-using-pe-sr405fl-coax-with-heatshrink-lf-solder-pe3m0332-p.aspx)

URL: <https://www.pasternack.com/smpm-size-12-d38999-contact-pin-to-sma-female-cable-using-pe-sr405fl-coax-with-heatshrink-lf-solder-pe3m0332-p.aspx>

The information contained within this document is accurate to the best of our knowledge and representative of the part described herein. It may be necessary to make modifications to the part and/or the documentation of the part in order to impliment improvements. Pasternack Enterprises reserves the right to make such changes as required. Unless otherwise stated, all specifications are nominal. Pasternack Enterprises does not make any representation or warranty regarding the suitability of the part described herein for any particular purpose, and Pasternack Enterprises does not assume liability arising out of the use of any part or document.


PE3M0332 CAD Drawing

SMPM Size 12 D38999 Contact Pin to SMA Female Cable Using PE-SR405FL Coax with HeatShrink, LF Solder



PE PASTERNAK
an INFINITE brand

Website: www.Pasternack.com
Phone: 1.866.727.8376 | 1.949.261.1920



INTERPRET ALL DIMENSIONS AND TOLERANCES PER ASME Y14.5
SCALE NONE
SHEET 1 OF 1

DESCRIPTION
SMPM #12 CONTACT PIN TO SMA FEMALE CABLE USING PE-SR405FL COAX WITH HEATSHRINK, LF SOLDER

SIZE	CAGE CODE	DRAWN BY	ITEM NO.	REV
A	53919	HBAKKE	PE3M0332	A

UNLESS OTHERWISE SPECIFIED
 LEADING DIMENSIONS ARE IN INCHES
 DIMENSIONS IN [] ARE MILLIMETERS

TOLERANCES:
 .X = ±.2 [5]
 .XX = ±.02 [0.5]
 .XXX = ±.005 [0.13]

FRACTIONS
 ± 1/32
 ANGLES ± 1°

CABLE LENGTH TOLERANCES:
 ≤ 12 [305] ±.60 [15.24] = ±.125 [-0]
 > 12 [305] ≤ 60 [1524] = ±.125 [-0]
 > 60 [1524] ≤ 120 [3048] = ±.25 [-0]
 > 120 [3048] ≤ 300 [7620] = ±.5 [-0]

ALL DIMENSIONS ARE FOR REFERENCE ONLY
 UNLESS OTHERWISE SPECIFIED
 UNDIMENSIONED NON-CRITICAL FEATURES
 MAY VARY IN SIZE AND LOCATION
 COLORS MAY VARY