

## SHV Plug to SHV Plug Cable Using RG58 Coax

### PE3W00034

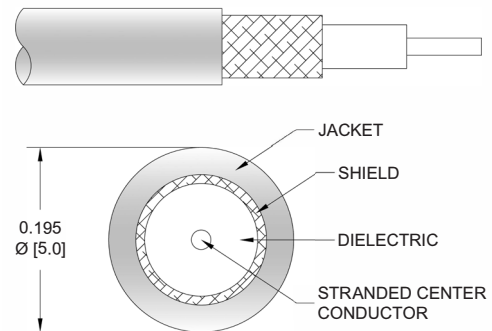


#### Configuration

- Connector 1: SHV Plug
- Connector 2: SHV Plug
- Cable Type: RG58
- Coax Flex Type: Flexible

#### Features

- Max Frequency 300 MHz
- Shielding Effectivity > 45 dB
- 65.9% Phase Velocity
- PVC (NC) Jacket



#### Applications

- General Purpose
- Laboratory Use

#### Description

Pasternack's PE3W00034 SHV plug to SHV plug cable using RG58 coax is part of our full line of RF components available for same-day shipping. Pasternack's flexible RF cable assemblies are ideal for applications where tight bends and flexure are required. This Pasternack SHV to SHV cable assembly has a plug to plug gender configuration with 50 ohm flexible RG58 coax. The PE3W00034 SHV plug to SHV plug cable assembly operates to 300 MHz.

Custom versions of most RF cable assemblies can be built and shipped same day. Custom cable assembly lengths can be obtained by specifying the desired length on the web site at time of order or by contacting a sales representative. Other available RF cable assembly value added services include connector orientation or clocking, heat shrink booting and custom labeling. RF testing can also be performed to document the electrical performance of your cable assembly.

#### Electrical Specifications

| Description             | Minimum | Typical       | Maximum | Units        |
|-------------------------|---------|---------------|---------|--------------|
| Frequency Range         | DC      |               | 300     | GHz          |
| VSWR                    |         |               | 1.4:1   |              |
| Velocity of Propagation |         | 65.9          |         | %            |
| RF Shielding            | 45      |               |         | dB           |
| Capacitance             |         | 30.8 [101.05] |         | pF/ft [pF/m] |
| Operating Voltage (AC)  |         |               | 1,900   | Vrms         |

#### Specifications by Frequency

## SHV Plug to SHV Plug Cable Using RG58 Coax



### PE3W00034

| Part Number     | Length                   | Description           | F1    | F2    | F3    | F4    | Units | Weight (lbs) |
|-----------------|--------------------------|-----------------------|-------|-------|-------|-------|-------|--------------|
|                 |                          | Frequency             | 50    | 100   | 250   | 300   | MHz   |              |
| PE3W00034       | Custom Lengths Available | Insertion Loss (Typ.) | 0.029 | 0.049 | 0.074 | 0.082 | dB/ft |              |
|                 |                          |                       | 0.1   | 0.17  | 0.25  | 0.27  | dB/m  |              |
| PE3W00034-12    | 12 In                    | Insertion Loss (Typ.) | 0.23  | 0.25  | 0.28  | 0.29  | dB    | 0.138        |
| PE3W00034-24    | 24 In                    | Insertion Loss (Typ.) | 0.26  | 0.3   | 0.35  | 0.37  | dB    | 0.162        |
| PE3W00034-36    | 36 In                    | Insertion Loss (Typ.) | 0.29  | 0.35  | 0.43  | 0.45  | dB    | 0.186        |
| PE3W00034-48    | 48 In                    | Insertion Loss (Typ.) | 0.32  | 0.4   | 0.5   | 0.53  | dB    | 0.21         |
| PE3W00034-200CM | 200 CM                   | Insertion Loss (Typ.) | 0.4   | 0.53  | 0.69  | 0.74  | dB    | 0.272        |

The insertion loss data for the base model does not include loss due to the connectors. Each length includes insertion loss due to the connectors.

|                             |              |
|-----------------------------|--------------|
| Loss due to Connector 1:    | 0.1 dB       |
| Loss due to Connector 2:    | 0.1 dB       |
| Base Weight:                | 0.138 pounds |
| Additional Weight per Inch: | 0.002 pounds |

## Mechanical Specifications

### Cable Assembly

|                |                    |
|----------------|--------------------|
| Width/Diameter | 0.5 in [12.7 mm]   |
| Weight         | 0.138 lbs [62.6 g] |

### Cable

|                                      |                     |
|--------------------------------------|---------------------|
| Cable Type                           | RG58                |
| Impedance                            | 50 Ohms             |
| Inner Conductor Type                 | Stranded            |
| Inner Conductor Material and Plating | Copper, Tin         |
| Dielectric Type                      | PE                  |
| Number of Shields                    | 1                   |
| Shield Layer 1                       | Tinned Copper Braid |
| Jacket Material                      | PVC (NC), Black     |
| Jacket Diameter                      | 0.195 in [4.95 mm]  |
| One Time Minimum Bend Radius         | 2 in [50.8 mm]      |

## SHV Plug to SHV Plug Cable Using RG58 Coax



**PE3W00034**

### Connectors

| Description                        | Connector 1     | Connector 2     |
|------------------------------------|-----------------|-----------------|
| Type                               | SHV Plug        | SHV Plug        |
| Specification                      | MIL-STD-348A    | MIL-STD-348A    |
| Impedance                          | 50 Ohms         | 50 Ohms         |
| Configuration                      | Straight        | Straight        |
| Contact Material and Plating       | Brass, Gold     | Brass, Gold     |
| Contact Plating Specification      | 30 µin minimum  | 30 µin minimum  |
| Dielectric Type                    | PTFE            | PTFE            |
| Body Material and Plating          | Brass, Nickel   | Brass, Nickel   |
| Body Plating Specification         | 100 µin minimum | 100 µin minimum |
| Coupling Nut Material and Plating  | Brass, Nickel   | Brass, Nickel   |
| Coupling Nut Plating Specification | 100 µin minimum | 100 µin minimum |

### Environmental Specifications

Operating Range Temperature -40 to +80 deg C

**Compliance Certifications** (see [product page](#) for current document)

### Plotted and Other Data

Notes:

## SHV Plug to SHV Plug Cable Using RG58 Coax



### PE3W00034

#### Typical Performance Data

#### How to Order

Part Number Configuration: **PE3W00034**    **- xx**    **uu**

Unit of Measure:  
cm = Centimeters  
<blank> = Inches

Length

Base Number

Example: PE3W00034-12 = 12 inches long cable  
PE3W00034-100cm = 100 cm long cable

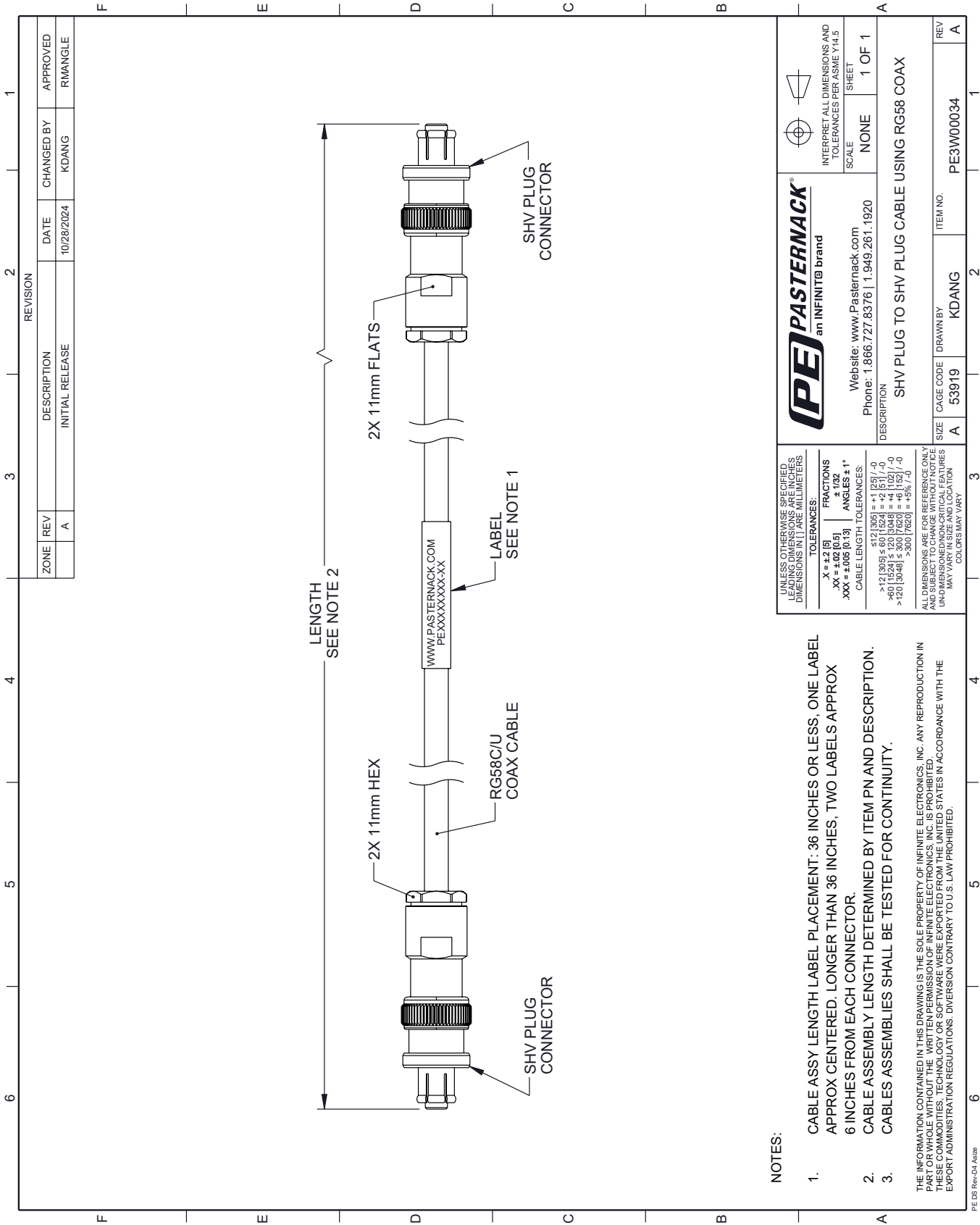
SHV Plug to SHV Plug Cable Using RG58 Coax from Pasternack Enterprises has same day shipment for domestic and International orders. Our RF, microwave and millimeter wave products maintain a 99.4% availability and are part of the broadest selection in the industry.

Click the following link (or enter part number in "SEARCH" on website) to obtain additional part information including price, inventory and certifications: [SHV Plug to SHV Plug Cable Using RG58 Coax PE3W00034](#)

URL: <https://www.pasternack.com/shv-plug-to-shv-plug-cable-using-rg58-pe3w00034-p.aspx>

The information contained within this document is accurate to the best of our knowledge and representative of the part described herein. It may be necessary to make modifications to the part and/or the documentation of the part in order to implement improvements. Pasternack Enterprises reserves the right to make such changes as required. Unless otherwise stated, all specifications are nominal. Pasternack Enterprises does not make any representation or warranty regarding the suitability of the part described herein for any particular purpose, and Pasternack Enterprises does not assume liability arising out of the use of any part or document.

PE3W00034 CAD Drawing
SHV Plug to SHV Plug Cable Using RG58 Coax



NOTES:

- 1. CABLE ASSY LENGTH LABEL PLACEMENT: 36 INCHES OR LESS, ONE LABEL APPROX CENTERED. LONGER THAN 36 INCHES, TWO LABELS APPROX 6 INCHES FROM EACH CONNECTOR.
- 2. CABLE ASSEMBLY LENGTH DETERMINED BY ITEM PN AND DESCRIPTION.
- 3. CABLES ASSEMBLIES SHALL BE TESTED FOR CONTINUITY.

THE INFORMATION CONTAINED IN THIS DRAWING IS THE SOLE PROPERTY OF INFINITE ELECTRONICS, INC. ANY REPRODUCTION IN PART OR WHOLE WITHOUT THE WRITTEN PERMISSION OF INFINITE ELECTRONICS, INC. IS PROHIBITED. THESE COMMODITIES, TECHNOLOGY OR SOFTWARE WERE EXPORTED FROM THE UNITED STATES IN ACCORDANCE WITH THE EXPORT ADMINISTRATION REGULATIONS. DIVERSION CONTRARY TO U.S. LAW PROHIBITED.