

SMA Male to SMA Male Cable Using PE-SR402AL Coax



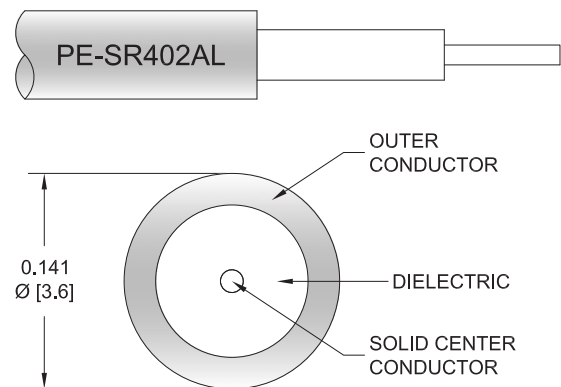
PE3W00122

Configuration

- Connector 1: SMA Male
- Connector 2: SMA Male
- Cable Type: PE-SR402AL
- Coax Flex Type: Semi-Rigid

Features

- Max Frequency 18 GHz
- 69.5% Phase Velocity
- 500 Mating Cycles



Applications

- General Purpose
- Laboratory Use

Description

Pasternack's PE3W00122 SMA male to SMA male cable using PE-SR402AL coax is part of our full line of RF components available for same-day shipping. Pasternack's semi-rigid RF cable assemblies are ideal for high performance applications and can be formed, using proper tooling, to the routing pattern required. This Pasternack SMA to SMA cable assembly has a male to male gender configuration with 50 ohm semi-rigid PE-SR402AL coax. The PE3W00122 SMA male to SMA male cable assembly operates to 18 GHz.

Custom versions of most RF cable assemblies can be built and shipped same day. Custom cable assembly lengths can be obtained by specifying the desired length on the web site at time of order or by contacting a sales representative. Other available RF cable assembly value added services include connector orientation or clocking, heat shrink booting and custom labeling. RF testing can also be performed to document the electrical performance of your cable assembly.

Electrical Specifications

Description	Minimum	Typical	Maximum	Units
Frequency Range	DC		18	GHz
VSWR			1.4:1	
Velocity of Propagation		69.5		%
Dielectric Withstanding Voltage (AC)			1,000	Vrms

Specifications by Frequency

SMA Male to SMA Male Cable Using PE-SR402AL Coax



PE3W00122

Part Number	Length	Description	F1	F2	F3	F4	F5	Units	Weight (lbs)
			Frequency	1000	2000	4500	9000	18000	
PE3W00122	Custom Lengths Available	Insertion Loss (Typ.)	0.13	0.167	0.258	0.423	0.66	dB/ft	
			0.43	0.55	0.85	1.39	2.17	dB/m	
PE3W00122-6	6 inch	Insertion Loss (Typ.)	0.27	0.29	0.33	0.42	0.53	dB	0.024
PE3W00122-12	12 inch	Insertion Loss (Typ.)	0.33	0.37	0.46	0.63	0.86	dB	0.032
PE3W00122-24	24 inch	Insertion Loss (Typ.)	0.46	0.54	0.72	1.05	1.52	dB	0.05
PE3W00122-36	36 inch	Insertion Loss (Typ.)	0.59	0.71	0.98	1.47	2.18	dB	0.067
PE3W00122-48	48 inch	Insertion Loss (Typ.)	0.72	0.87	1.24	1.9	2.84	dB	0.084

The insertion loss data for the base model does not include loss due to the connectors. Each length includes insertion loss due to the connectors.

Loss due to Connector 1:	0.1 dB
Loss due to Connector 2:	0.1 dB
Base Weight:	0.032 pounds
Additional Weight per Inch:	0.00144 pounds

Mechanical Specifications

Cable Assembly

Width/Diameter	0.5 in [12.7 mm]
Weight	0.032 lbs [14.51 g]

Cable

Cable Type	PE-SR402AL
Impedance	50 Ohms
Inner Conductor Type	Solid
Inner Conductor Material and Plating	Copper Clad Steel, Silver
Dielectric Type	PTFE
Number of Shields	1
Outer Conductor 1 Material and Plating	Tinned Aluminum
Repeated Minimum Bend Radius	0.15 in [3.81 mm]

Connectors

Description	Connector 1	Connector 2
Type	SMA Male	SMA Male
Specification	MIL-STD-348A	MIL-STD-348A
Impedance	50 Ohms	50 Ohms
Configuration	Straight	Straight
Mating Cycles	500	500
Body Material and Plating	Stainless Steel, Gold	Stainless Steel, Gold
Coupling Nut Material and Plating	Brass, Nickel	Brass, Nickel
Hex Size	5/16 inch	5/16 inch
Torque	3 in-lbs 0.34 Nm	3 in-lbs 0.34 Nm
Seal Gasket Material	Silicone	

SMA Male to SMA Male Cable Using PE-SR402AL Coax



PE3W00122

Environmental Specifications

Operating Range Temperature -55 to +125 deg C

Compliance Certifications (see [product page](#) for current document)

Plotted and Other Data

Notes:

Typical Performance Data

How to Order

Part Number Configuration: **PE3W00122 - xx uu**

PE3W00122: Base Number
 - xx: Length
 uu: Unit of Measure:
 cm = Centimeters
 <blank> = Inches

Example: PE3W00122-12 = 12 inches long cable
 PE3W00122-100cm = 100 cm long cable

SMA Male to SMA Male Cable Using PE-SR402AL Coax from Pasternack Enterprises has same day shipment for domestic and International orders. Our RF, microwave and millimeter wave products maintain a 99.4% availability and are part of the broadest selection in the industry.

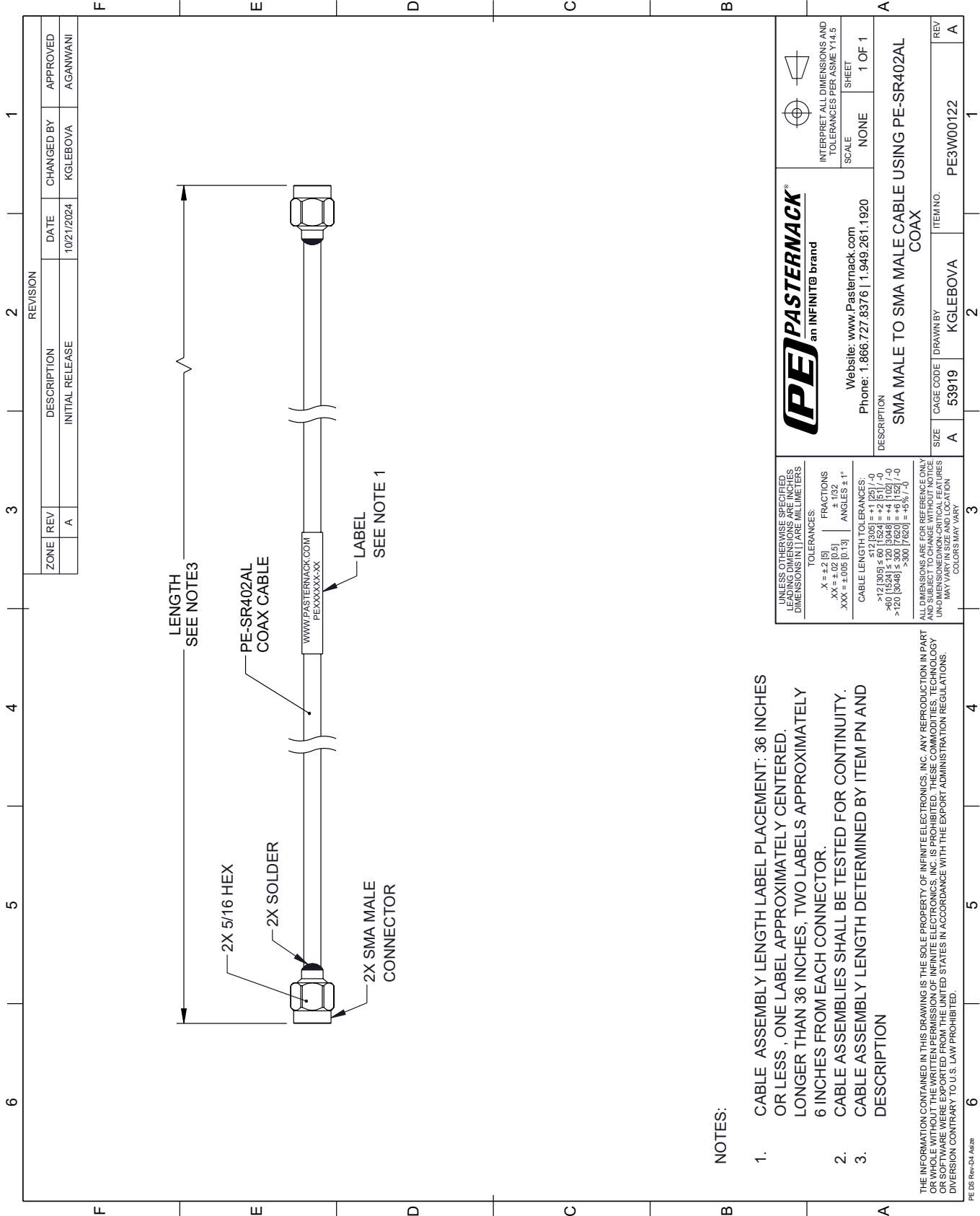
Click the following link (or enter part number in "SEARCH" on website) to obtain additional part information including price, inventory and certifications: [SMA Male to SMA Male Cable Using PE-SR402AL Coax PE3W00122](#)

URL: <https://www.pasternack.com/sma-male-to-sma-male-cable-using-pe-sr402al-pe3w00122-p.aspx>

The information contained within this document is accurate to the best of our knowledge and representative of the part described herein. It may be necessary to make modifications to the part and/or the documentation of the part in order to implement improvements. Pasternack Enterprises reserves the right to make such changes as required. Unless otherwise stated, all specifications are nominal. Pasternack Enterprises does not make any representation or warranty regarding the suitability of the part described herein for any particular purpose, and Pasternack Enterprises does not assume liability arising out of the use of any part or document.

PE3W00122 CAD Drawing

SMA Male to SMA Male Cable Using PE-SR402AL Coax



NOTES:

1. CABLE ASSEMBLY LENGTH LABEL PLACEMENT: 36 INCHES OR LESS, ONE LABEL APPROXIMATELY CENTERED. LONGER THAN 36 INCHES, TWO LABELS APPROXIMATELY 6 INCHES FROM EACH CONNECTOR.
2. CABLE ASSEMBLIES SHALL BE TESTED FOR CONTINUITY.
3. CABLE ASSEMBLY LENGTH DETERMINED BY ITEM PN AND DESCRIPTION

THE INFORMATION CONTAINED IN THIS DRAWING IS THE SOLE PROPERTY OF INFINITE ELECTRONICS, INC. ANY REPRODUCTION IN PART OR WHOLE WITHOUT THE WRITTEN PERMISSION OF INFINITE ELECTRONICS, INC. IS PROHIBITED. THESE COMMODITIES, TECHNOLOGY OR SERVICE WERE EXPORTED FROM THE UNITED STATES IN ACCORDANCE WITH THE EXPORT ADMINISTRATION REGULATIONS. DIVERSION CONTRARY TO U.S. LAW PROHIBITED.

<p>an INFINITE brand</p>		<p>INTERPRET ALL DIMENSIONS AND TOLERANCES PER ASME Y14.5</p> <p>SCALE: NONE</p> <p>SHEET: 1 OF 1</p>
<p>Website: www.Pasternack.com</p> <p>Phone: 1.866.727.8376 1.949.261.1920</p>		
<p>DESCRIPTION: SMA MALE TO SMA MALE CABLE USING PE-SR402AL COAX</p>		
SIZE: A	CAGE CODE: 53919	ITEM NO.: PE3W00122
DRAWN BY: KGLEBOVA		REV: A

UNLESS OTHERWISE SPECIFIED, LEADING DIMENSIONS ARE IN INCHES, DIMENSIONS IN [] ARE MILLIMETERS.

TOLERANCES:

.X = +.2 [5]	FRACTIONS ± 1/32
.XX = ±.02 [0.5]	ANGLES ± 1°
.XXX = ±.005 [0.13]	

CABLE LENGTH TOLERANCES:

>12 [305] ≤ 60 [1524] = +2 [51] / -0
>60 [1524] ≤ 120 [3048] = +4 [102] / -0
>120 [3048] ≤ 300 [7620] = +5% / -0

ALL DIMENSIONS ARE FOR REFERENCE ONLY. UNLESS OTHERWISE SPECIFIED, DIMENSIONS MAY VARY IN SIZE AND LOCATION. COLORS MAY VARY.