

2.92mm Male to 2.92mm Female Bulkhead Cable Using PE-SR405FLJ Coax



PE3W01390

Configuration

- Connector 1: 2.92mm Male
- Connector 2: 2.92mm Female Bulkhead
- Cable Type: PE-SR405FLJ
- Coax Flex Type: Formable

Features

- Shielding Effectivity > 100 dB
- 69.5% Phase Velocity
- FEP Jacket



Applications

- General Purpose
- Laboratory Use

Description

Pasternack's PE3W01390 2.92mm male to 2.92mm female bulkhead cable using PE-SR405FLJ coax is part of our full line of RF components available for same-day shipping. Pasternack's formable RF cable assemblies provide an alternative to costly pre-formed semi-rigid assemblies since they are hand formable. This Pasternack 2.92mm to 2.92mm cable assembly has a male to female gender configuration with 50 ohm formable PE-SR405FLJ coax. Our RF cable assembly with 2.92mm bulkhead interface allows designers to create external connections on their product enclosures, and can be used in a variety of other rack mount and panel mount applications.

Custom versions of most RF cable assemblies can be built and shipped same day. Custom cable assembly lengths can be obtained by specifying the desired length on the web site at time of order or by contacting a sales representative. Other available RF cable assembly value added services include connector orientation or clocking, heat shrink booting and custom labeling. RF testing can also be performed to document the electrical performance of your cable assembly.

Electrical Specifications

Description	Minimum	Typical	Maximum	Units
Velocity of Propagation		69.5		%
RF Shielding	100			dB
Group Delay		1.43 [4.69]		ns/ft [ns/m]
Capacitance		29 [95.14]		pF/ft [pF/m]

Mechanical Specifications

Cable Assembly

Width/Diameter

0.5 in [12.7 mm]

Weight

0.041 lbs [18.6 g]

Cable

Cable Type

PE-SR405FLJ

2.92mm Male to 2.92mm Female Bulkhead Cable Using PE-SR405FLJ Coax



PE3W01390

Impedance	50 Ohms
Inner Conductor Type	Solid
Inner Conductor Material and Plating	Copper Clad Steel, Silver
Dielectric Type	PTFE
Number of Shields	1
Shield Layer 1	Tinned Copper Braid
Jacket Material	FEP, Black
Jacket Diameter	0.098 in [2.49 mm]
One Time Minimum Bend Radius	0.236 in [5.99 mm]
Repeated Minimum Bend Radius	0.787 in [19.99 mm]

Connectors

Description	Connector 1	Connector 2
Type	2.92mm Male	2.92mm Female Bulkhead
Impedance	50 Ohms	50 Ohms
Configuration	Straight	Straight
Contact Material and Plating	Beryllium Copper, Gold over Nickel	Beryllium Copper, Gold over Nickel
Contact Plating Specification	50 µin minimum	50 µin minimum
Dielectric Type	PCTFE	
Body Material and Plating	Passivated Stainless Steel	Passivated Stainless Steel
Body Plating Specification	SAE-AMS-2700	SAE-AMS-2700
Coupling Nut Material and Plating	Passivated Stainless Steel	
Coupling Nut Plating Specification	SAE-AMS-2700	
Hex Size	5/16 Inch	

Environmental Specifications

Compliance Certifications (see [product page](#) for current document)

Plotted and Other Data

Notes:

2.92mm Male to 2.92mm Female Bulkhead Cable Using PE-SR405FLJ Coax



PE3W01390

Typical Performance Data

How to Order

Part Number Configuration:

PE3W01390

- XX

uu

- Unit of Measure:
cm = Centimeters
<blank> = Inches

- Length

- Base Number

Example: PE3W01390-12 = 12 inches long cable
PE3W01390-100cm = 100 cm long cable

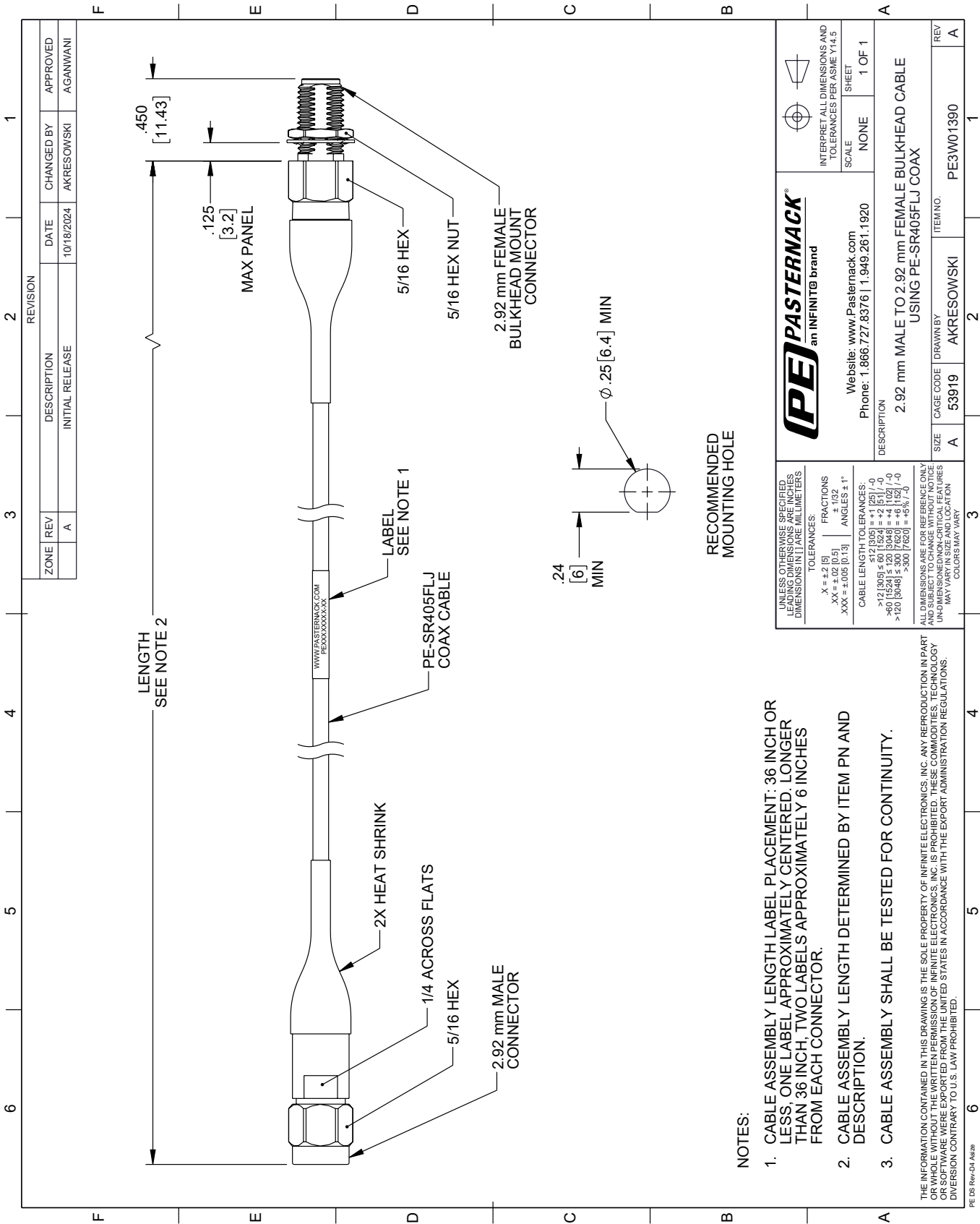
2.92mm Male to 2.92mm Female Bulkhead Cable Using PE-SR405FLJ Coax from Pasternack Enterprises has same day shipment for domestic and International orders. Our RF, microwave and millimeter wave products maintain a 99.4% availability and are part of the broadest selection in the industry.

Click the following link (or enter part number in "SEARCH" on website) to obtain additional part information including price, inventory and certifications: [2.92mm Male to 2.92mm Female Bulkhead Cable Using PE-SR405FLJ Coax PE3W01390](#)

URL: <https://www.pasternack.com/2.92mm-male-2.92mm-female-pe-sr405flj-cable-assembly-pe3w01390-p.aspx>

The information contained within this document is accurate to the best of our knowledge and representative of the part described herein. It may be necessary to make modifications to the part and/or the documentation of the part in order to implement improvements. Pasternack Enterprises reserves the right to make such changes as required. Unless otherwise stated, all specifications are nominal. Pasternack Enterprises does not make any representation or warranty regarding the suitability of the part described herein for any particular purpose, and Pasternack Enterprises does not assume liability arising out of the use of any part or document.

PE3W01390 CAD Drawing
2.92mm Male to 2.92mm Female Bulkhead Cable Using PE-SR405FLJ Coax



- 1. CABLE ASSEMBLY LENGTH LABEL PLACEMENT: 36 INCH OR LESS, ONE LABEL APPROXIMATELY CENTERED, LONGER THAN 36 INCH, TWO LABELS APPROXIMATELY 6 INCHES FROM EACH CONNECTOR.
- 2. CABLE ASSEMBLY LENGTH DETERMINED BY ITEM PN AND DESCRIPTION.
- 3. CABLE ASSEMBLY SHALL BE TESTED FOR CONTINUITY.

UNLESS OTHERWISE SPECIFIED, LEADING DIMENSIONS ARE IN INCHES. DIMENSIONS IN [] ARE MILLIMETERS.		PE PASTERNAK an INFINITI® brand		INTERPRET ALL DIMENSIONS AND TOLERANCES PER ASME Y14.5	
TOLERANCES:		Website: www.Pasternack.com		SCALE	
X = ±.2 [5]		Phone: 1.866.727.8376 1.949.261.1920		NONE	
.XX = ±.02 [0.5]				SHEET	
.XXX = ±.005 [0.13]				1 OF 1	
ANGLES ± 1°					
CABLE LENGTH TOLERANCES:		DESCRIPTION			
<12 [305] = ±.1 [25] / -0		2.92 mm MALE TO 2.92 mm FEMALE BULKHEAD CABLE			
>12 [305] ≤ 60 [1524] = ±.2 [5] / -0		USING PE-SR405FLJ COAX			
>60 [1524] ≤ 120 [3048] = ±.4 [102] / -0					
>120 [3048] ≤ 300 [7620] = ±.6 [152] / -0					
>300 [7620] = ±.6 [152] / -0					
ALL DIMENSIONS ARE FOR REFERENCE ONLY. DIMENSIONS ARE NOT TO BE USED FOR CONSTRUCTION OF PARTS OR FOR TESTING. DIMENSIONS MAY VARY IN SIZE AND LOCATION. COLORS MAY VARY.		ITEM NO.			
		A 53919		DRAWN BY	
		AKRESOWSKI		REV	
		PE3W01390		A	