

75 Ohm Push-On MCX Plug Right Angle to 75 Ohm BNC Male Cable Using 75 Ohm RG179 Coax



PE3W01637

Configuration

- Connector 1: Push-On MCX Plug Right Angle
- Connector 2: BNC Male
- Cable Type: RG179
- Coax Flex Type: Flexible

Features

- Max Frequency 1 GHz
- FEP Jacket

Applications

- General Purpose
- Laboratory Use

Description

Pasternack's PE3W01637 75 ohm MCX plug push-on right angle to 75 ohm BNC male cable using 75 ohm RG179 coax is part of our full line of RF components available for same-day shipping. Pasternack's flexible RF cable assemblies are ideal for applications where tight bends and flexure are required. This Pasternack MCX to BNC cable assembly has a plug to male gender configuration with 75 ohm flexible RG179 coax. The PE3W01637 MCX plug to BNC male cable assembly operates to 1 GHz. The right angle MCX interface on the RG179 cable allows for easier connections in tight spaces.

Custom versions of most RF cable assemblies can be built and shipped same day. Custom cable assembly lengths can be obtained by specifying the desired length on the web site at time of order or by contacting a sales representative. Other available RF cable assembly value added services include connector orientation or clocking, heat shrink booting and custom labeling. RF testing can also be performed to document the electrical performance of your cable assembly.

Electrical Specifications

Description	Minimum	Typical	Maximum	Units
Frequency Range	DC		1,000	MHz
VSWR			1.4:1	
Capacitance		23 [75.46]		pF/ft [pF/m]

Specifications by Frequency

75 Ohm Push-On MCX Plug Right Angle to 75 Ohm BNC Male Cable Using 75 Ohm RG179 Coax



PE3W01637

Part Number	Length	Description	F1	F2	F3	F4	Units	Weight (lbs)
			Frequency	100	250	500	1000	
PE3W01637	Custom Lengths Available	Insertion Loss (Typ.)	0.09	0.14	0.203	0.3	dB/ft	
			0.3	0.45	0.67	0.99	dB/m	
PE3W01637-12	12 inch	Insertion Loss (Typ.)	0.39	0.44	0.51	0.6	dB	0.041
PE3W01637-24	24 inch	Insertion Loss (Typ.)	0.48	0.58	0.71	0.9	dB	0.05
PE3W01637-36	36 inch	Insertion Loss (Typ.)	0.57	0.72	0.91	1.2	dB	0.059
PE3W01637-48	48 inch	Insertion Loss (Typ.)	0.66	0.85	1.12	1.5	dB	0.068
PE3W01637-72	72 inch	Insertion Loss (Typ.)	0.84	1.13	1.52	2.1	dB	0.086

The insertion loss data for the base model does not include loss due to the connectors. Each length includes insertion loss due to the connectors.

Loss due to Connector 1: 0.1 dB
 Loss due to Connector 2: 0.2 dB
 Base Weight: 0.041 pounds
 Additional Weight per Inch: 0.00075 pounds

Mechanical Specifications

Cable Assembly

Weight 0.041 lbs [18.6 g]

Cable

Cable Type RG179
 Impedance 75 Ohms
 Inner Conductor Type Stranded
 Inner Conductor Material and Plating Copper Clad Steel, Silver
 Dielectric Type PTFE
 Number of Shields 1
 Shield Layer 1 Silver Plated Copper Braid
 Jacket Material FEP, Tan
 Jacket Diameter 0.1 in [2.54 mm]

75 Ohm Push-On MCX Plug Right Angle to 75 Ohm BNC Male Cable Using 75 Ohm RG179 Coax



PE3W01637

Connectors

Description	Connector 1	Connector 2
Type	MCX Plug Right Angle	BNC Male
Specification	MIL-C-39012	
Impedance	75 Ohms	75 Ohms
Configuration	Right Angle	Straight
Connection Method	Push-On	
Contact Material and Plating	Brass, Gold	Brass, Gold
Contact Plating Specification		30 µin minimum
Dielectric Type	PTFE	PTFE
Outer Conductor Material and Plating	Beryllium Copper, Gold	
Body Material and Plating	Brass, Gold	Brass, Nickel
Body Plating Specification		100 µin minimum
Coupling Nut Material and Plating		Brass, Nickel
Coupling Nut Plating Specification		100 µin minimum

Environmental Specifications

Compliance Certifications (see [product page](#) for current document)

Plotted and Other Data

Notes:

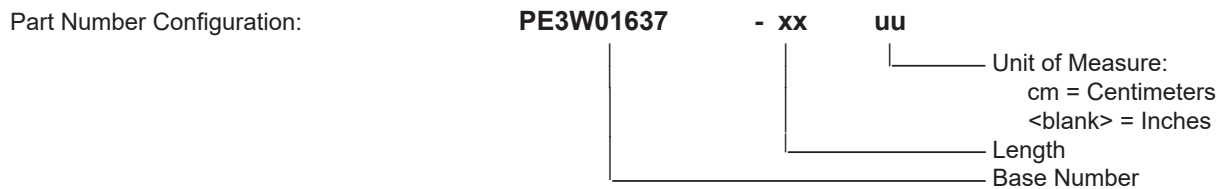
75 Ohm Push-On MCX Plug Right Angle to 75 Ohm BNC Male Cable Using 75 Ohm RG179 Coax



PE3W01637

Typical Performance Data

How to Order



Example: PE3W01637-12 = 12 inches long cable
 PE3W01637-100cm = 100 cm long cable

75 Ohm Push-On MCX Plug Right Angle to 75 Ohm BNC Male Cable Using 75 Ohm RG179 Coax from Pasternack Enterprises has same day shipment for domestic and International orders. Our RF, microwave and millimeter wave products maintain a 99.4% availability and are part of the broadest selection in the industry.

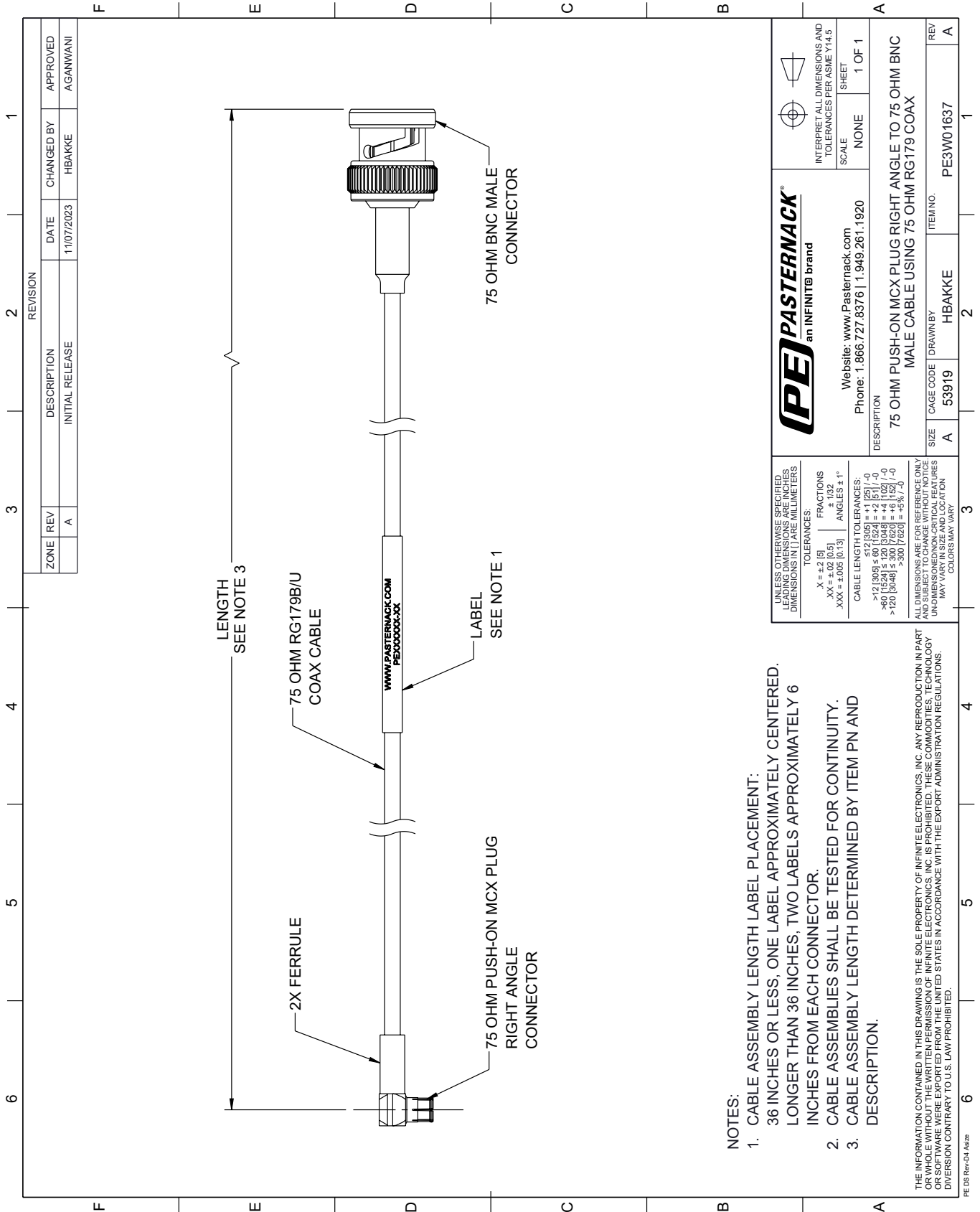
Click the following link (or enter part number in "SEARCH" on website) to obtain additional part information including price, inventory and certifications: [75 Ohm Push-On MCX Plug Right Angle to 75 Ohm BNC Male Cable Using 75 Ohm RG179 Coax PE3W01637](https://www.pasternack.com/75-ohm-push-on-mcx-plug-right-angle-to-75-ohm-bnc-male-cable-using-rg179-pe3w01637-p.aspx)

URL: <https://www.pasternack.com/75-ohm-push-on-mcx-plug-right-angle-to-75-ohm-bnc-male-cable-using-rg179-pe3w01637-p.aspx>

The information contained within this document is accurate to the best of our knowledge and representative of the part described herein. It may be necessary to make modifications to the part and/or the documentation of the part in order to impliment improvements. Pasternack Enterprises reserves the right to make such changes as required. Unless otherwise stated, all specifications are nominal. Pasternack Enterprises does not make any representation or warranty regarding the suitability of the part described herein for any particular purpose, and Pasternack Enterprises does not assume liability arising out of the use of any part or document.

PE3W01637 CAD Drawing

75 Ohm Push-On MCX Plug Right Angle to 75 Ohm BNC Male Cable Using 75 Ohm RG179 Coax



NOTES:

1. CABLE ASSEMBLY LENGTH LABEL PLACEMENT: 36 INCHES OR LESS, ONE LABEL APPROXIMATELY CENTERED, LONGER THAN 36 INCHES, TWO LABELS APPROXIMATELY 6 INCHES FROM EACH CONNECTOR.
2. CABLE ASSEMBLIES SHALL BE TESTED FOR CONTINUITY.
3. CABLE ASSEMBLY LENGTH DETERMINED BY ITEM PN AND DESCRIPTION.

THE INFORMATION CONTAINED IN THIS DRAWING IS THE SOLE PROPERTY OF INFINITE ELECTRONICS, INC. ANY REPRODUCTION IN PART OR WHOLE WITHOUT THE WRITTEN PERMISSION OF INFINITE ELECTRONICS, INC. IS PROHIBITED. THESE COMMODITIES, TECHNOLOGY OR SOFTWARE WERE EXPORTED FROM THE UNITED STATES IN ACCORDANCE WITH THE EXPORT ADMINISTRATION REGULATIONS. DIVERSION CONTRARY TO U.S. LAW PROHIBITED.

PE DS Rev-04 Add2

		INTERPRET ALL DIMENSIONS AND TOLERANCES PER ASME Y14.5 SCALE NONE SHEET 1 OF 1	
Website: www.Pasternack.com Phone: 1.866.727.8376 1.949.261.1920		DESCRIPTION 75 OHM PUSH-ON MCX PLUG RIGHT ANGLE TO 75 OHM BNC MALE CABLE USING 75 OHM RG179 COAX	
SIZE	CAGE CODE	DRAWN BY	ITEM NO.
A	53919	HBAKKE	PE3W01637

UNLESS OTHERWISE SPECIFIED, LEADING DIMENSIONS ARE IN INCHES, DIMENSIONS IN [] ARE MILLIMETERS.

TOLERANCES:
 .X = ±.2 [5]
 .XX = ±.02 [0.5]
 .XXX = ±.005 [0.13]

FRACTIONS
 ± 1/32
 ANGLES ± 1°

CABLE LENGTH TOLERANCES:
 >12 [305] ≤ 60 [1524] = ±.1 [2.5] / -0
 >60 [1524] ≤ 120 [3048] = ±.4 [102] / -0
 >120 [3048] ≤ 300 [7620] = ±.6 [15.2] / -0
 >300 [7620] = ±.6 [15.2] / -0

ALL DIMENSIONS ARE FOR REFERENCE ONLY. DIMENSIONS OF CRITICAL FEATURES UNDIMENSIONED/NON-CRITICAL FEATURES MAY VARY IN SIZE AND LOCATION. COLORS MAY VARY.