

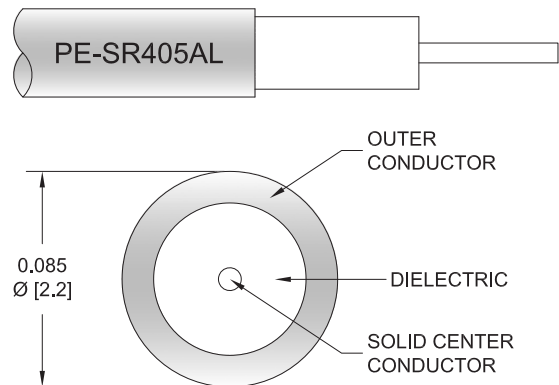
2.92mm Male to 2.92mm Female Bulkhead Cable Using PE-SR405AL Coax



PE3W02491

Configuration

- Connector 1: 2.92mm Male
- Connector 2: 2.92mm Female Bulkhead
- Cable Type: PE-SR405AL
- Coax Flex Type: Semi-Rigid



Applications

- General Purpose
- Laboratory Use

Description

Pasternack's PE3W02491 2.92mm male to 2.92mm female bulkhead cable using PE-SR405AL coax is part of our full line of RF components available for same-day shipping. Pasternack's semi-rigid RF cable assemblies are ideal for high performance applications and can be formed, using proper tooling, to the routing pattern required. This Pasternack 2.92mm to 2.92mm cable assembly has a male to female gender configuration with 50 ohm semi-rigid PE-SR405AL coax. Our RF cable assembly with 2.92mm bulkhead interface allows designers to create external connections on their product enclosures, and can be used in a variety of other rack mount and panel mount applications.

Custom versions of most RF cable assemblies can be built and shipped same day. Custom cable assembly lengths can be obtained by specifying the desired length on the web site at time of order or by contacting a sales representative. Other available RF cable assembly value added services include connector orientation or clocking, heat shrink booting and custom labeling. RF testing can also be performed to document the electrical performance of your cable assembly.

Mechanical Specifications

Cable Assembly

Weight 0.041 lbs [18.6 g]

Cable

Cable Type	PE-SR405AL
Impedance	50 Ohms
Inner Conductor Type	Solid
Inner Conductor Material and Plating	Copper Clad Steel, Silver
Dielectric Type	PTFE
Number of Shields	1
Shield Layer 1	Tinned Aluminum

2.92mm Male to 2.92mm Female Bulkhead Cable Using PE-SR405AL Coax



PE3W02491

Connectors

Description	Connector 1	Connector 2
Type	2.92mm Male	2.92mm Female Bulkhead
Impedance	50 Ohms	50 Ohms
Configuration	Straight	Straight
Mating Cycles	500	
Contact Material and Plating	Beryllium Copper, Gold over Nickel	Beryllium Copper, Gold over Nickel
Contact Plating Specification	50 µin minimum	50 µin minimum
Dielectric Type	PCTFE	
Body Material and Plating	Passivated Stainless Steel	Passivated Stainless Steel
Body Plating Specification	SAE-AMS-2700	SAE-AMS-2700
Coupling Nut Material and Plating	Passivated Stainless Steel	
Coupling Nut Plating Specification	SAE-AMS-2700	
Hex Size	5/16 inch	
Torque	8 in-lbs 0.9 Nm	

Environmental Specifications

Compliance Certifications (see [product page](#) for current document)

Plotted and Other Data

Notes:

2.92mm Male to 2.92mm Female Bulkhead Cable Using PE-SR405AL Coax



PE3W02491

Typical Performance Data

How to Order

Part Number Configuration: **PE3W02491** **- xx** **uu**

Unit of Measure:
cm = Centimeters
<blank> = Inches

Length

Base Number

Example: PE3W02491-12 = 12 inches long cable
PE3W02491-100cm = 100 cm long cable

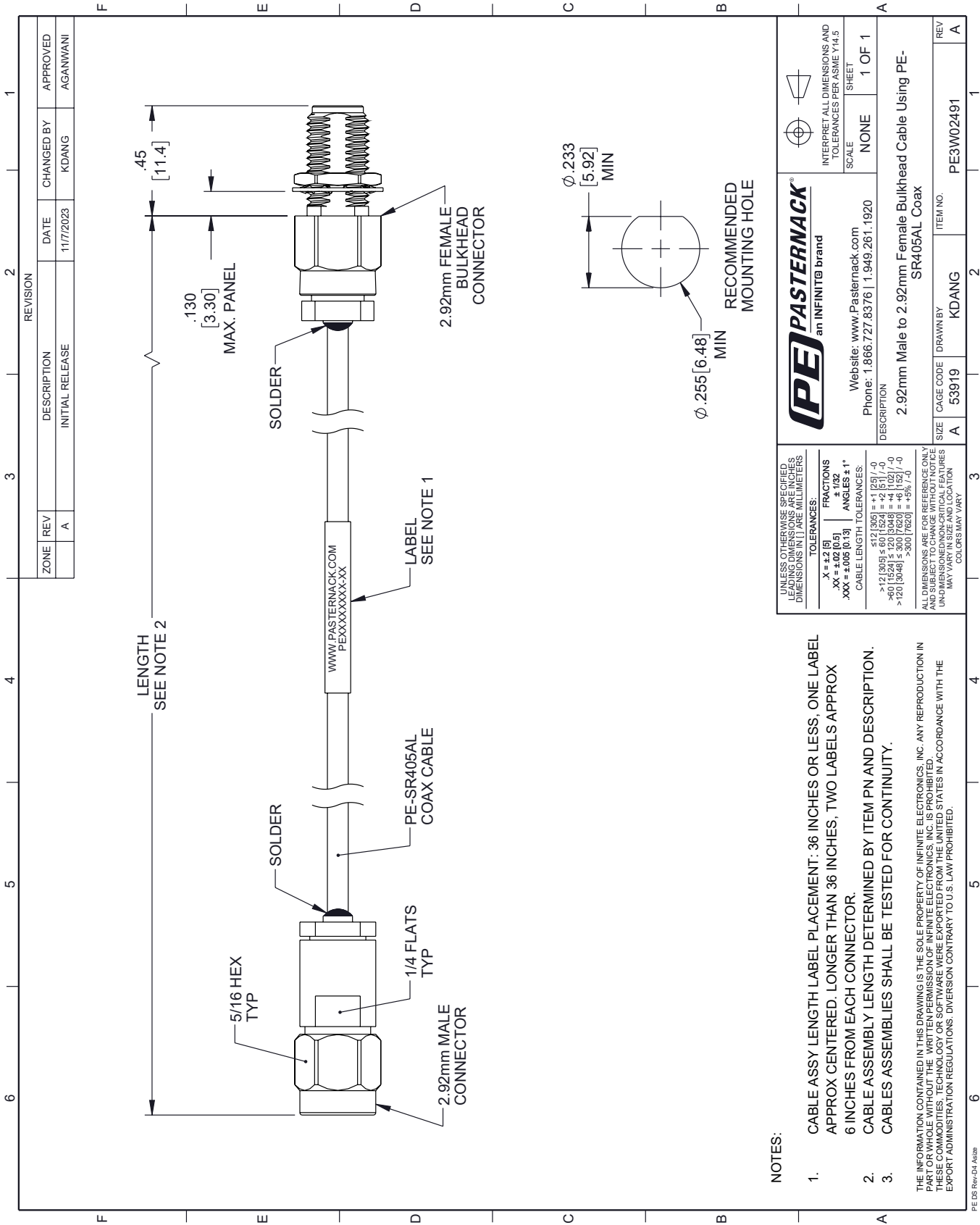
2.92mm Male to 2.92mm Female Bulkhead Cable Using PE-SR405AL Coax from Pasternack Enterprises has same day shipment for domestic and International orders. Our RF, microwave and millimeter wave products maintain a 99.4% availability and are part of the broadest selection in the industry.

Click the following link (or enter part number in "SEARCH" on website) to obtain additional part information including price, inventory and certifications: [2.92mm Male to 2.92mm Female Bulkhead Cable Using PE-SR405AL Coax PE3W02491](https://www.pasternack.com/2.92mm-male-to-2.92mm-female-bulkhead-cable-using-pe-sr405al-pe3w02491-p.aspx)

URL: <https://www.pasternack.com/2.92mm-male-to-2.92mm-female-bulkhead-cable-using-pe-sr405al-pe3w02491-p.aspx>

The information contained within this document is accurate to the best of our knowledge and representative of the part described herein. It may be necessary to make modifications to the part and/or the documentation of the part in order to implement improvements. Pasternack Enterprises reserves the right to make such changes as required. Unless otherwise stated, all specifications are nominal. Pasternack Enterprises does not make any representation or warranty regarding the suitability of the part described herein for any particular purpose, and Pasternack Enterprises does not assume liability arising out of the use of any part or document.

PE3W02491 CAD Drawing
2.92mm Male to 2.92mm Female Bulkhead Cable Using PE-SR405AL Coax



NOTES:

- CABLE ASSY LENGTH LABEL PLACEMENT: 36 INCHES OR LESS, ONE LABEL APPROX CENTERED. LONGER THAN 36 INCHES, TWO LABELS APPROX 6 INCHES FROM EACH CONNECTOR.
- CABLE ASSEMBLY LENGTH DETERMINED BY ITEM PN AND DESCRIPTION.
- CABLES ASSEMBLIES SHALL BE TESTED FOR CONTINUITY.

THE INFORMATION CONTAINED IN THIS DRAWING IS THE SOLE PROPERTY OF INFINITE ELECTRONICS, INC. ANY REPRODUCTION IN PART OR WHOLE WITHOUT THE WRITTEN PERMISSION OF INFINITE ELECTRONICS, INC. IS PROHIBITED. THESE COMMODITIES, TECHNOLOGY OR SOFTWARE WERE EXPORTED FROM THE UNITED STATES IN ACCORDANCE WITH THE EXPORT ADMINISTRATION REGULATIONS. DIVERSION CONTRARY TO U.S. LAW PROHIBITED.

PE DS Rev-04-Asize

UNLESS OTHERWISE SPECIFIED, LEADING DIMENSIONS ARE IN INCHES. DIMENSIONS IN [] ARE MILLIMETERS.		TOLERANCES:		FRACTIONS	
.X = ±.2 [5]		.XX = ±.02 [0.5]		.XXX = ±.005 [0.13]	
ANGLES ± 1°		CABLE LENGTH TOLERANCES:		± 1/32	
<12 [305] = ±1 [25] / -0		>12 [305] ≤ 60 [1524] = ±2 [51] / -0		>60 [1524] ≤ 120 [3048] = ±4 [102] / -0	
>120 [3048] ≤ 300 [7620] = ±5% [12.5]		>300 [7620] = ±5% [12.5]			
ALL DIMENSIONS ARE FOR REFERENCE ONLY. UNDIMENSIONED NON-CRITICAL FEATURES MAY VARY IN SIZE AND LOCATION. COLORS MAY VARY.					

PE PASTERNAK an INFINITE brand		INTERPRET ALL DIMENSIONS AND TOLERANCES PER ASME Y14.5	
Website: www.Pasternack.com		SCALE: NONE	
Phone: 1.866.727.8376 1.949.261.1920		SHEET 1 OF 1	

DESCRIPTION 2.92mm Male to 2.92mm Female Bulkhead Cable Using PE-SR405AL Coax		ITEM NO. PE3W02491	
SIZE A	CAGE CODE 53919	DRAWN BY KDANG	REV A